

Data Path : Z:\pestpcbsrv\HPCHEM1\FID_F\Data\FF071719\
 Data File : FF005083.D
 Signal(s) : FID2B.ch
 Acq On : 17 Jul 2019 09:34
 Operator : DD\AJ
 Sample : 50 PPM TRPH STD
 Misc :
 ALS Vial : 53 Sample Multiplier: 1

Integration File: autoint1.e
 Quant Time: Jul 17 14:23:38 2019
 Quant Method : Z:\pestpcbsrv\HPCHEM1\FID_F\Method\FF062619.M
 Quant Title :
 QLast Update : Wed Jun 26 14:27:24 2019
 Response via : Initial Calibration
 Integrator: ChemStation

Volume Inj. : 1uL
 Signal Phase : Rxi-1ms
 Signal Info : 20mx0.18mmx0.18um

Compound	R.T.	Response	Conc Units

System Monitoring Compounds			
9) S TETRACOSANE-d50 (SURR...	14.683	5051511	51.939 ug/ml
Target Compounds			
1) N-OCTANE	2.284	5391065	42.979 ug/ml
2) N-DECANE	4.393	5966740	47.250 ug/ml
3) N-DODECANE	6.417	6020960	47.453 ug/ml
4) N-TETRADECANE	8.212	5975746	47.757 ug/ml
5) N-HEXADECANE	9.815	5973925	48.381 ug/ml
6) N-OCTADECANE	11.261	5864848	49.505 ug/ml
7) N-EICOSANE	12.575	5884415	50.717 ug/ml
8) N-DOCOSANE	13.778	5849932	51.992 ug/ml
10) N-TETRACOSANE	14.888	5882807	52.848 ug/ml
11) N-HEXACOSANE	15.914	5889750	53.250 ug/ml
12) N-OCTACOSANE	16.869	5983891	53.648 ug/ml
13) N-TRIACONTANE	17.761	6213384	55.308 ug/ml
14) N-DOTRIACONTANE	18.601	6253957	54.911 ug/ml
15) N-TETRATRIACONTANE	19.393	6323784	58.261 ug/ml
16) N-HEXATRIACONTANE	20.141	6155560	59.445 ug/ml
17) N-OCTATRIACONTANE	20.896	5857188	61.411 ug/ml
18) N-TETRACONTANE	21.819	5949080	51.175 ug/ml

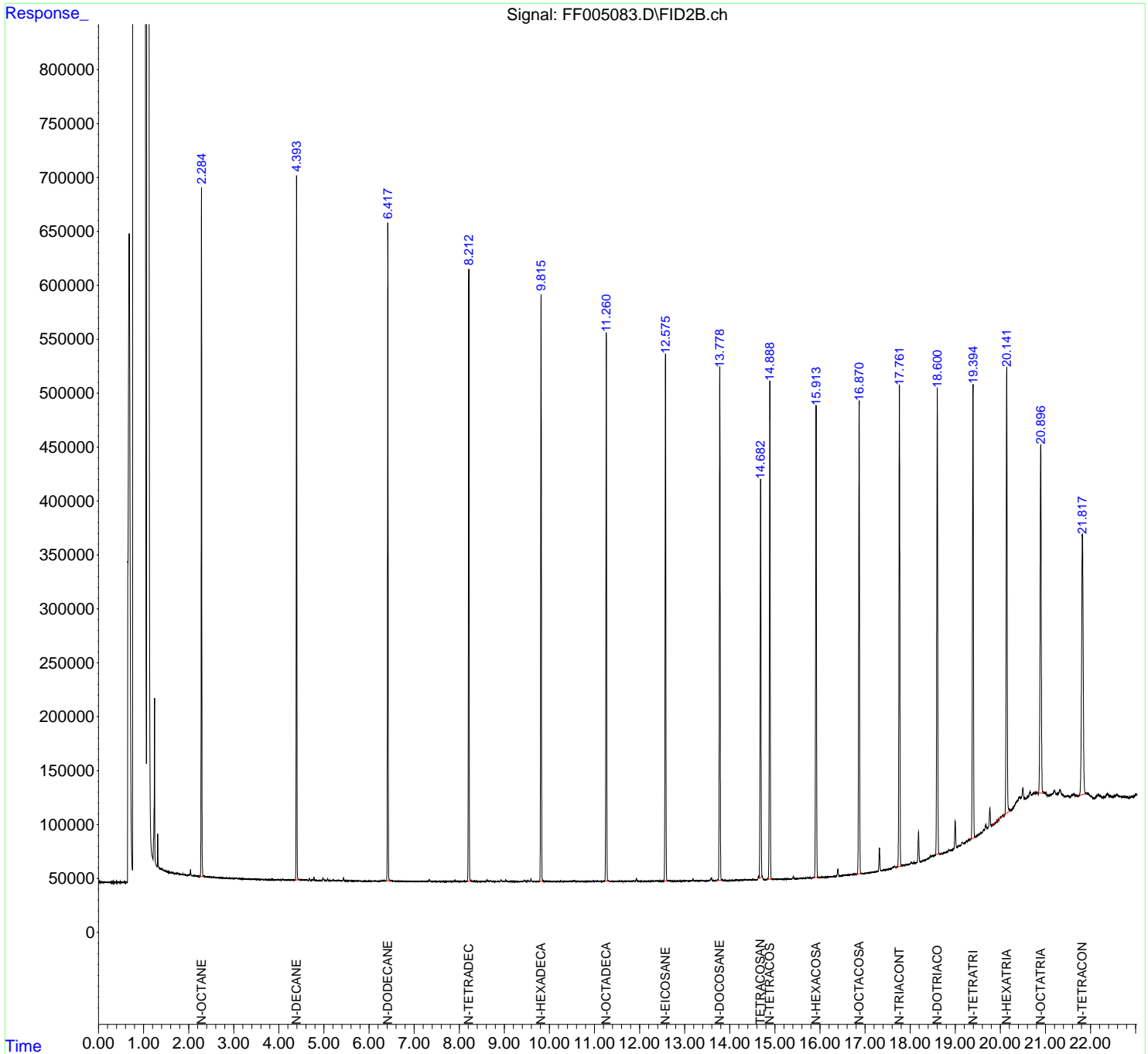
(f)=RT Delta > 1/2 Window

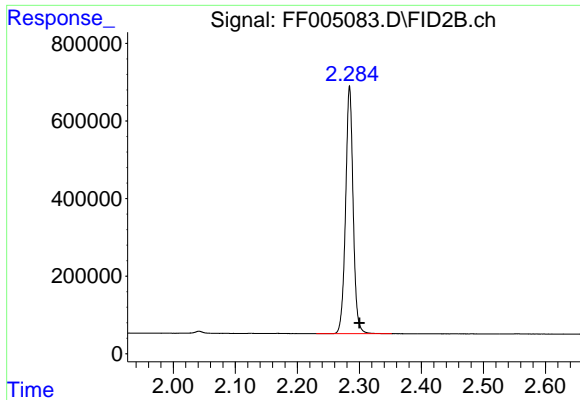
(m)=manual int.

Data Path : Z:\pestpcbsrv\HPCHEM1\FID_F\Data\FF071719\
 Data File : FF005083.D
 Signal(s) : FID2B.ch
 Acq On : 17 Jul 2019 09:34
 Operator : DD\AJ
 Sample : 50 PPM TRPH STD
 Misc :
 ALS Vial : 53 Sample Multiplier: 1

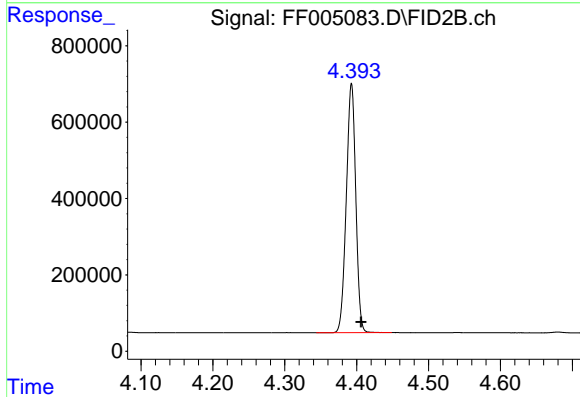
Integration File: autoint1.e
 Quant Time: Jul 17 14:23:38 2019
 Quant Method : Z:\pestpcbsrv\HPCHEM1\FID_F\Method\FF062619.M
 Quant Title :
 QLast Update : Wed Jun 26 14:27:24 2019
 Response via : Initial Calibration
 Integrator: ChemStation

Volume Inj. : 1uL
 Signal Phase : Rxi-1ms
 Signal Info : 20mx0.18mmx0.18um

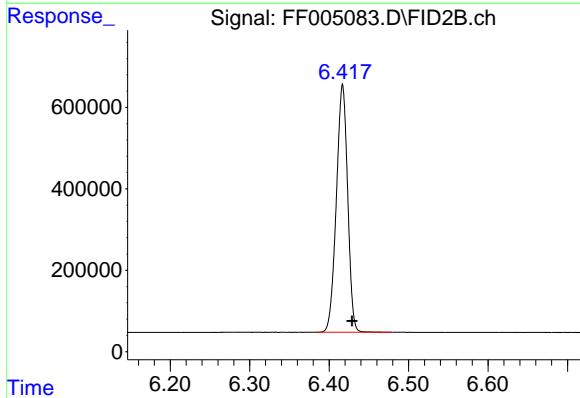




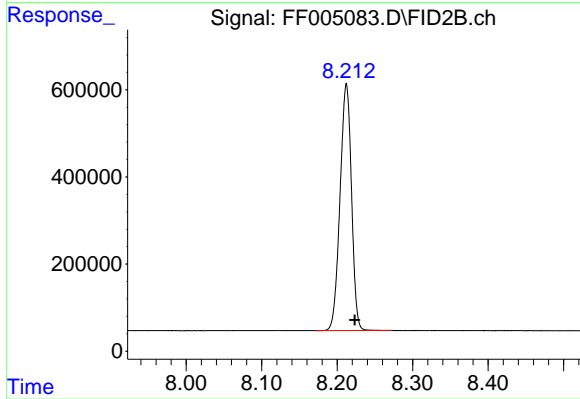
#1 N-OCTANE
R.T.: 2.284 min
Delta R.T.: -0.016 min
Response: 5391065
Conc: 42.98 ug/ml



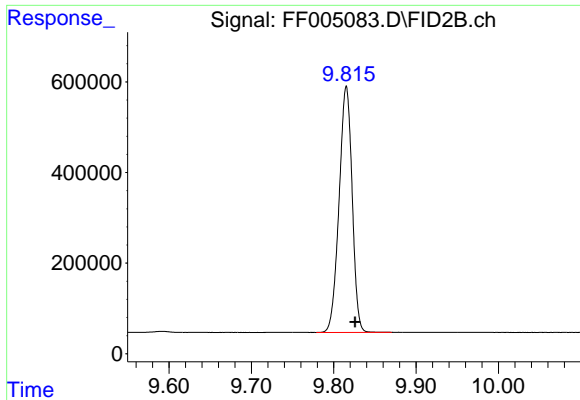
#2 N-DECANE
R.T.: 4.393 min
Delta R.T.: -0.013 min
Response: 5966740
Conc: 47.25 ug/ml



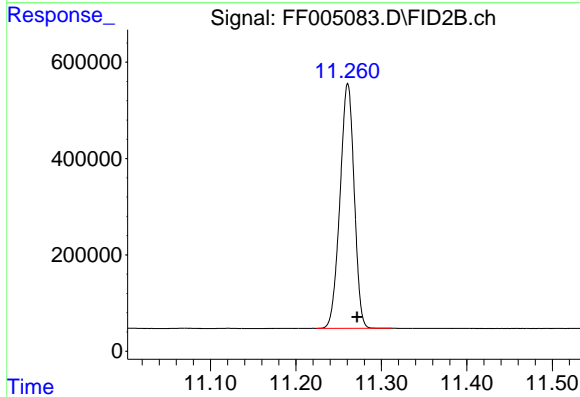
#3 N-DODECANE
R.T.: 6.417 min
Delta R.T.: -0.012 min
Response: 6020960
Conc: 47.45 ug/ml



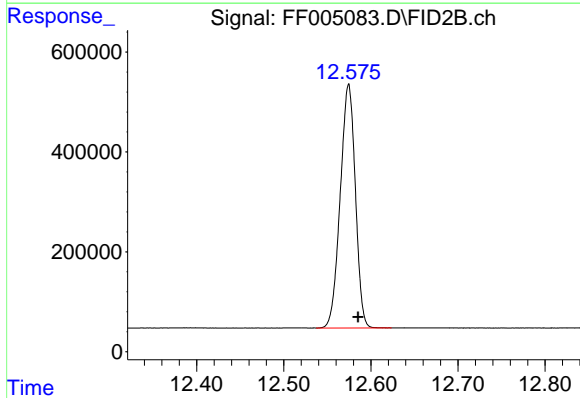
#4 N-TETRADECANE
R.T.: 8.212 min
Delta R.T.: -0.011 min
Response: 5975746
Conc: 47.76 ug/ml



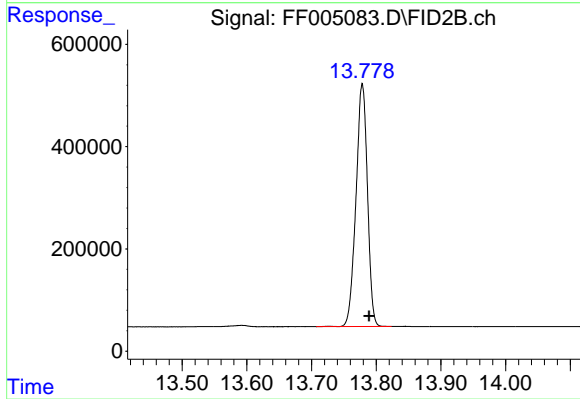
#5 N-HEXADECANE
R.T.: 9.815 min
Delta R.T.: -0.011 min
Response: 5973925
Conc: 48.38 ug/ml



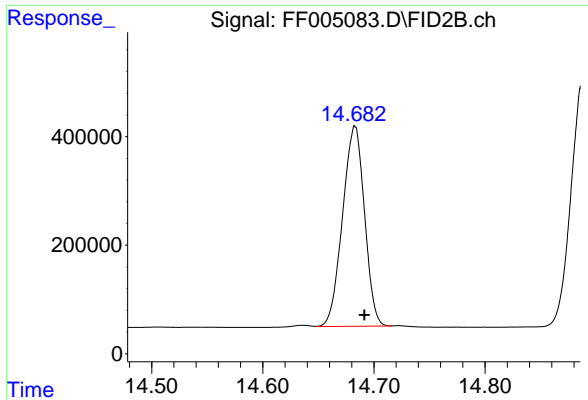
#6 N-OCTADECANE
R.T.: 11.261 min
Delta R.T.: -0.011 min
Response: 5864848
Conc: 49.51 ug/ml



#7 N-EICOSANE
R.T.: 12.575 min
Delta R.T.: -0.011 min
Response: 5884415
Conc: 50.72 ug/ml

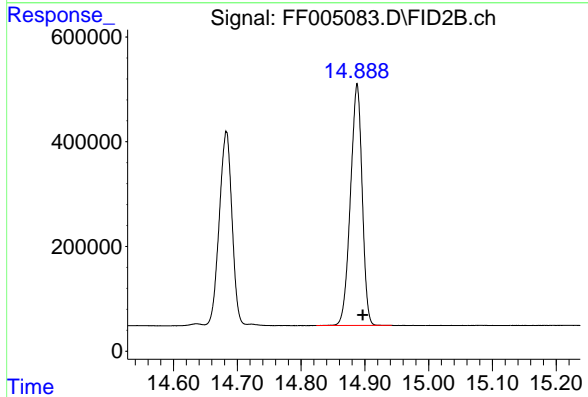


#8 N-DOCOSANE
R.T.: 13.778 min
Delta R.T.: -0.010 min
Response: 5849932
Conc: 51.99 ug/ml



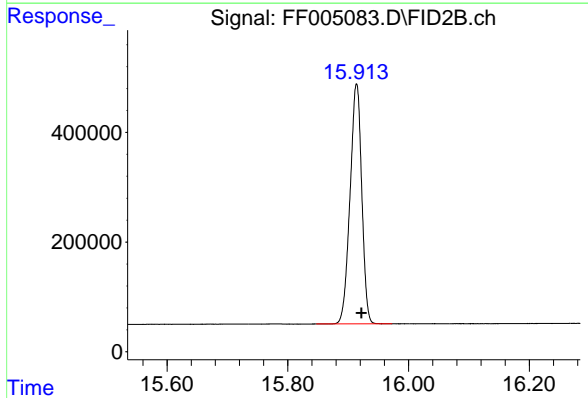
#9 TETRACOSANE-d50 (SURROGATE)

R.T.: 14.683 min
Delta R.T.: -0.009 min
Response: 5051511
Conc: 51.94 ug/ml



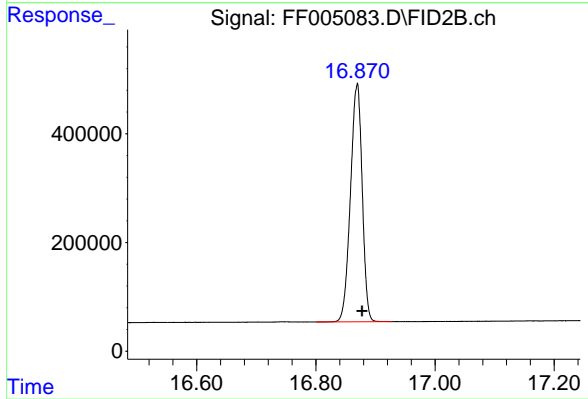
#10 N-TETRACOSANE

R.T.: 14.888 min
Delta R.T.: -0.009 min
Response: 5882807
Conc: 52.85 ug/ml



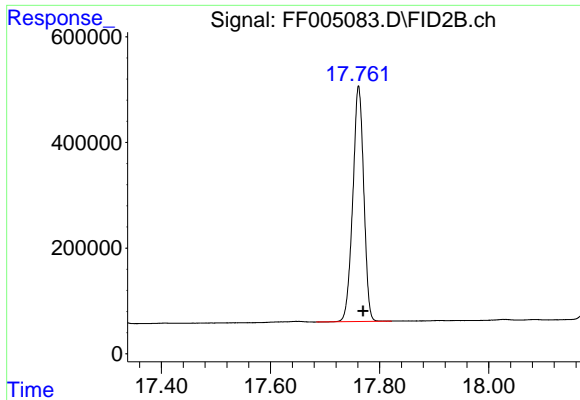
#11 N-HEXACOSANE

R.T.: 15.914 min
Delta R.T.: -0.008 min
Response: 5889750
Conc: 53.25 ug/ml

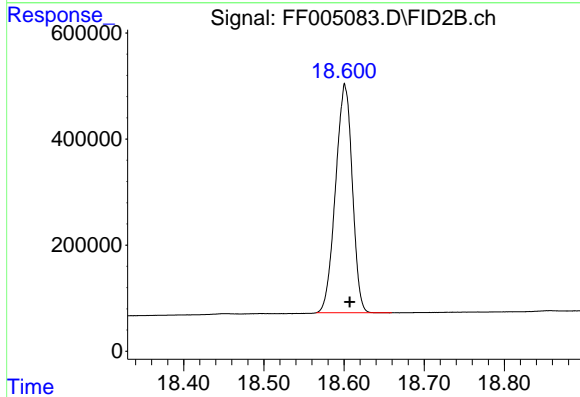


#12 N-OCTACOSANE

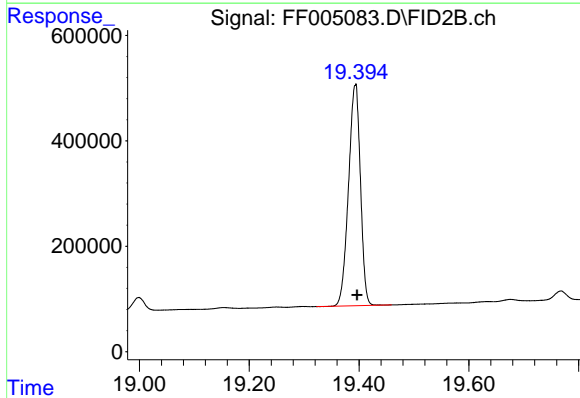
R.T.: 16.869 min
Delta R.T.: -0.008 min
Response: 5983891
Conc: 53.65 ug/ml



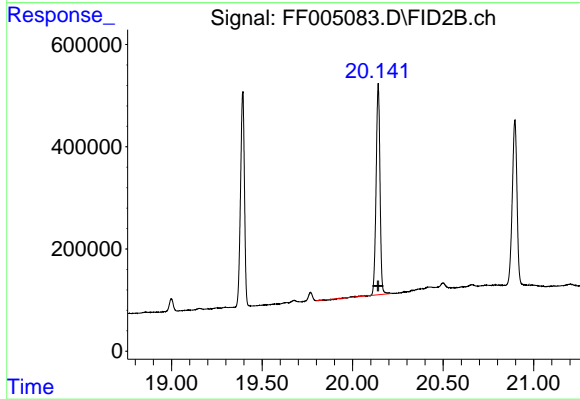
#13 N-TRIACONTANE
R.T.: 17.761 min
Delta R.T.: -0.008 min
Response: 6213384
Conc: 55.31 ug/ml



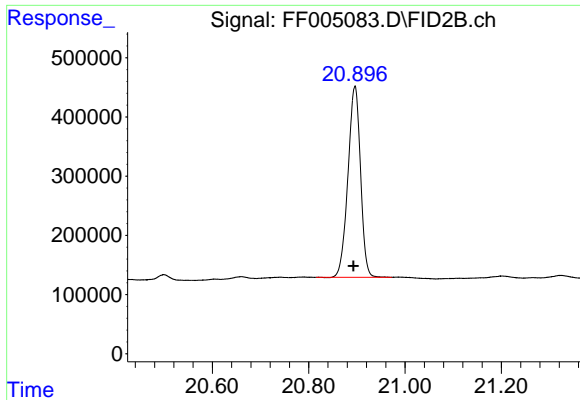
#14 N-DOTRIACONTANE
R.T.: 18.601 min
Delta R.T.: -0.006 min
Response: 6253957
Conc: 54.91 ug/ml



#15 N-TETRATRIACONTANE
R.T.: 19.393 min
Delta R.T.: -0.003 min
Response: 6323784
Conc: 58.26 ug/ml

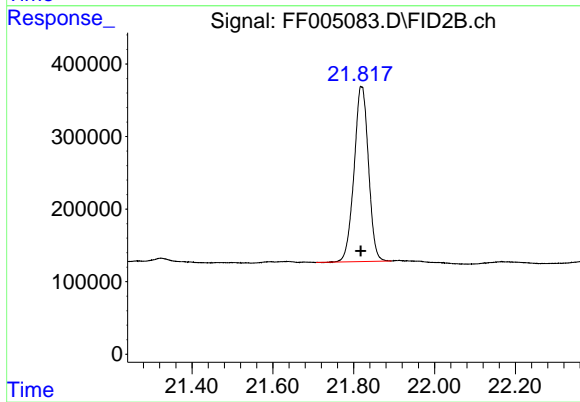


#16 N-HEXATRIACONTANE
R.T.: 20.141 min
Delta R.T.: 0.000 min
Response: 6155560
Conc: 59.44 ug/ml



#17 N-OCTATRIACONTANE

R.T.: 20.896 min
Delta R.T.: 0.003 min
Response: 5857188
Conc: 61.41 ug/ml



#18 N-TETRACONTANE

R.T.: 21.819 min
Delta R.T.: 0.001 min
Response: 5949080
Conc: 51.17 ug/ml