

Data Path : Z:\pestpcbsrv\HPCHEM1\FID\_F\Data\FF082123AL\  
 Data File : FF013258.D  
 Signal(s) : FID2B.ch  
 Acq On : 22 Aug 2023 00:38  
 Operator : YP\AJ  
 Sample : 04090-09  
 Misc :  
 ALS Vial : 78 Sample Multiplier: 1

Instrument :  
 FID\_F  
 ClientSampleId :

Integration File: autoint1.e  
 Quant Time: Aug 22 05:23:13 2023  
 Quant Method : Z:\pestpcbsrv\HPCHEM1\FID\_F\Method\Aliphatic EPH 081023.M  
 Quant Title : GC Extractables  
 QLast Update : Thu Aug 10 16:05:52 2023  
 Response via : Initial Calibration  
 Integrator: ChemStation

Volume Inj. : 1 ul  
 Signal Phase : Rxi-1ms  
 Signal Info : 20M x 0.18mm x 0.18um

Compound	R.T.	Response	Conc Units
-----			
System Monitoring Compounds			
9) S ortho-Terphenyl (SURR)	11.893	4765940	34.688 ug/ml
Spiked Amount	50.000	Recovery	= 69.38%
12) S 1-chlorooctadecane (S...	13.330	3701512	35.322 ug/ml
Spiked Amount	50.000	Recovery	= 70.64%
Target Compounds			
1) T n-Nonane (C9)	3.230f	84945	0.795 ug/ml
-----			

(f)=RT Delta > 1/2 Window

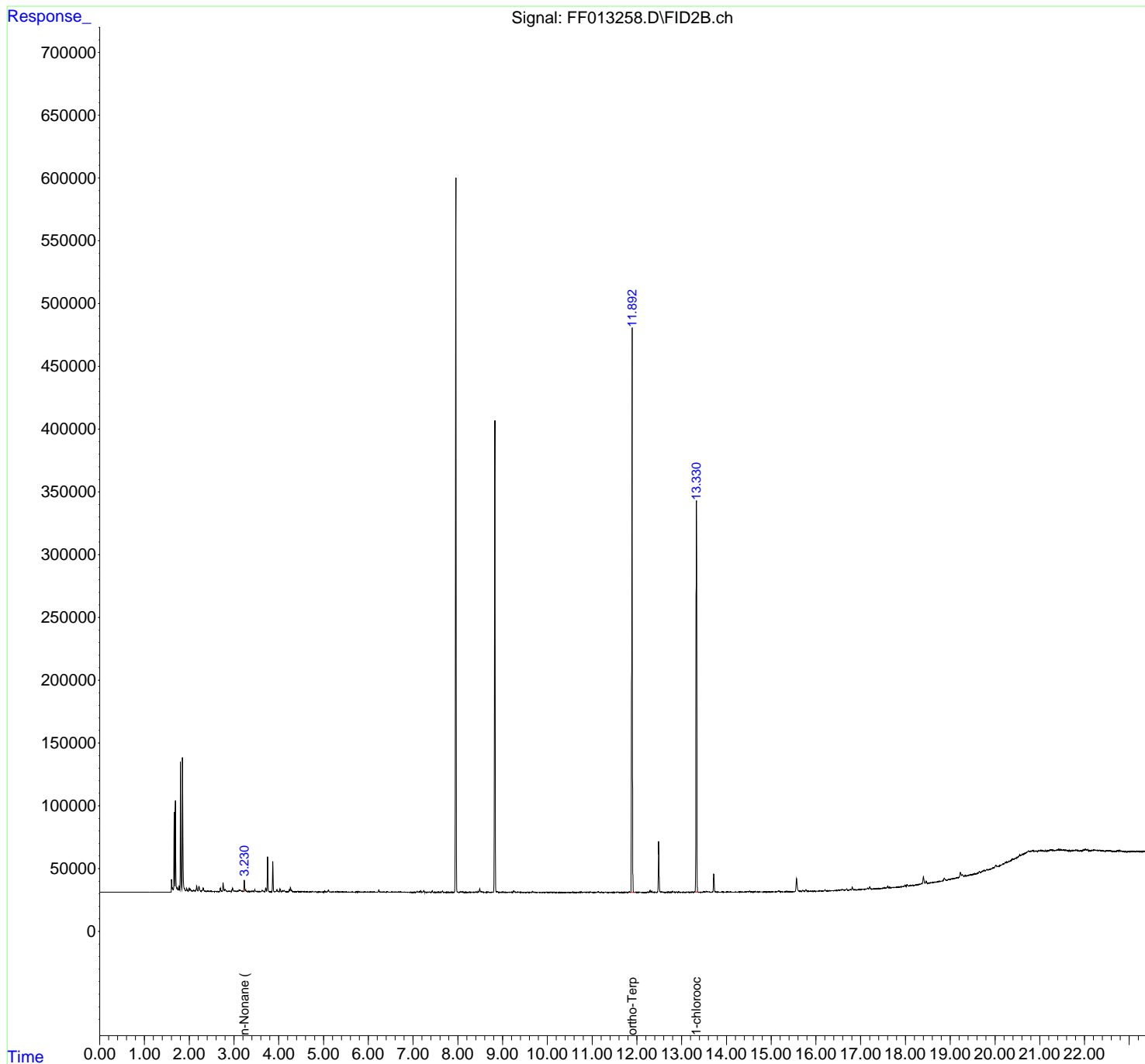
(m)=manual int.

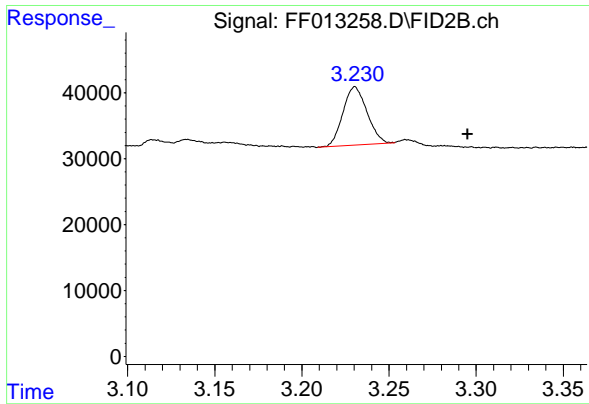
Data Path : Z:\pestpcbsrv\HPCHEM1\FID\_F\Data\FF082123AL\  
 Data File : FF013258.D  
 Signal(s) : FID2B.ch  
 Acq On : 22 Aug 2023 00:38  
 Operator : YP\AJ  
 Sample : 04090-09  
 Misc :  
 ALS Vial : 78 Sample Multiplier: 1

Instrument :  
 FID\_F  
 ClientSampleId :

Integration File: autoint1.e  
 Quant Time: Aug 22 05:23:13 2023  
 Quant Method : Z:\pestpcbsrv\HPCHEM1\FID\_F\Method\Aliphatic EPH 081023.M  
 Quant Title : GC Extractables  
 QLast Update : Thu Aug 10 16:05:52 2023  
 Response via : Initial Calibration  
 Integrator: ChemStation

Volume Inj. : 1 ul  
 Signal Phase : Rxi-1ms  
 Signal Info : 20M x 0.18mm x 0.18um

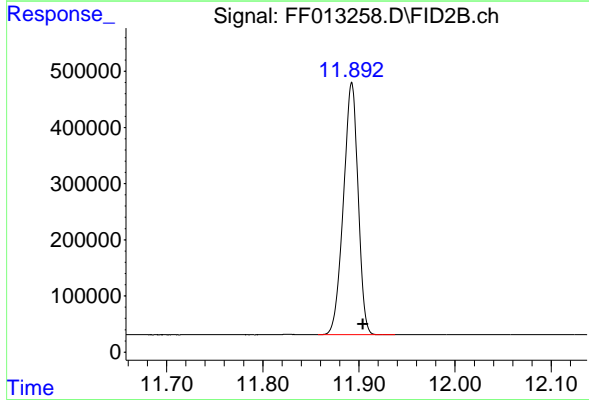




#1 n-Nonane (C9)

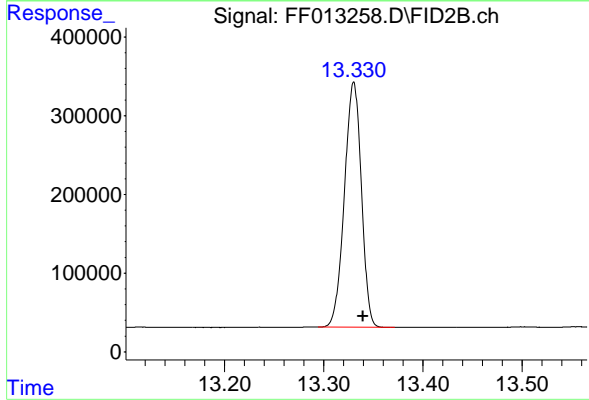
R.T.: 3.230 min  
 Delta R.T.: -0.065 min  
 Response: 84945  
 Conc: 0.79 ug/ml

Instrument :  
 FID\_F  
 ClientSampleId :



#9 ortho-Terphenyl (SURR)

R.T.: 11.893 min  
 Delta R.T.: -0.012 min  
 Response: 4765940  
 Conc: 34.69 ug/ml



#12 1-chlorooctadecane (SURR)

R.T.: 13.330 min  
 Delta R.T.: -0.009 min  
 Response: 3701512  
 Conc: 35.32 ug/ml