

Data Path : Z:\pestpcbsrv\HPCHEM1\FID_F\Data\FF082223AL\
 Data File : FF013277.D
 Signal(s) : FID2B.ch
 Acq On : 22 Aug 2023 10:31
 Operator : YP\AJ
 Sample : 04091-16D
 Misc :
 ALS Vial : 93 Sample Multiplier: 1

Instrument :
 FID_F
 ClientSampleId :

Integration File: autoint1.e
 Quant Time: Aug 22 13:20:49 2023
 Quant Method : Z:\pestpcbsrv\HPCHEM1\FID_F\Method\Aliphatic EPH 081023.M
 Quant Title : GC Extractables
 QLast Update : Thu Aug 10 16:05:52 2023
 Response via : Initial Calibration
 Integrator: ChemStation

Volume Inj. : 1 ul
 Signal Phase : Rxi-1ms
 Signal Info : 20M x 0.18mm x 0.18um

Compound	R.T.	Response	Conc Units

System Monitoring Compounds			
9) S ortho-Terphenyl (SURR)	11.887	4081440	29.706 ug/ml
Spiked Amount	50.000	Recovery	= 59.41%
12) S 1-chlorooctadecane (S...	13.326	3168365	30.234 ug/ml
Spiked Amount	50.000	Recovery	= 60.47%
Target Compounds			
6) T n-Tetradecane (C14)	8.483f	48488	0.449 ug/ml
10) T n-Eicosane (C20)	12.930	51319	0.468 ug/ml
14) T n-Tetracosane (C24)	15.146	38007	0.346 ug/ml
18) T n-Dotriacontane (C32)	18.863	82175	0.727 ug/ml

(f)=RT Delta > 1/2 Window

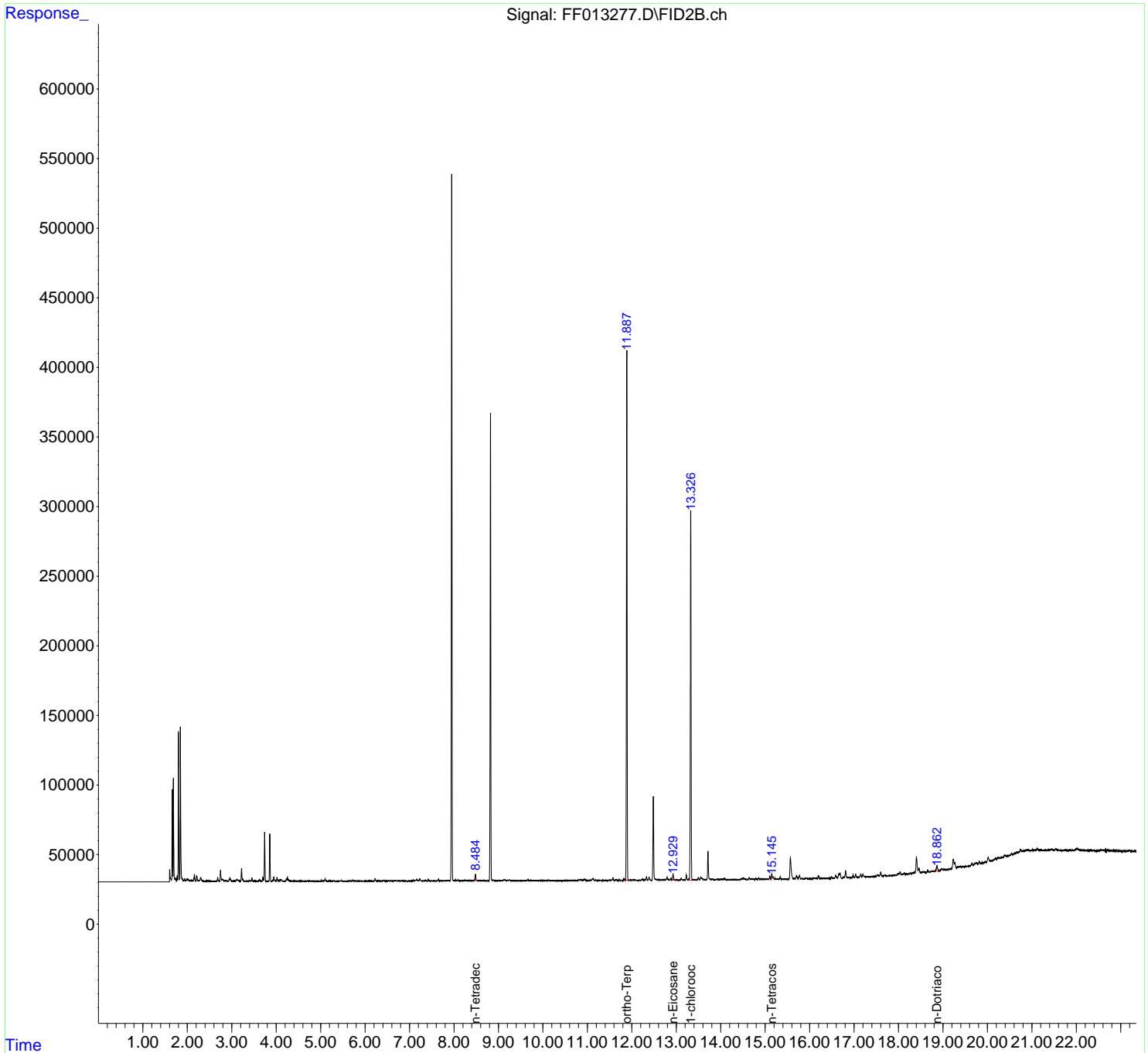
(m)=manual int.

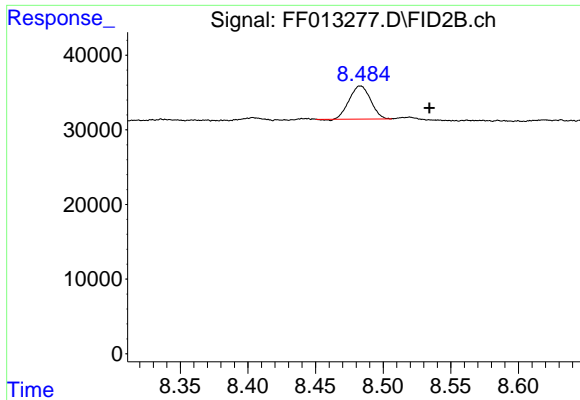
Data Path : Z:\pestpcbsrv\HPCHEM1\FID_F\Data\FF082223AL\
 Data File : FF013277.D
 Signal(s) : FID2B.ch
 Acq On : 22 Aug 2023 10:31
 Operator : YP\AJ
 Sample : 04091-16D
 Misc :
 ALS Vial : 93 Sample Multiplier: 1

Instrument :
 FID_F
 ClientSampleId :

Integration File: autoint1.e
 Quant Time: Aug 22 13:20:49 2023
 Quant Method : Z:\pestpcbsrv\HPCHEM1\FID_F\Method\Aliphatic EPH 081023.M
 Quant Title : GC Extractables
 QLast Update : Thu Aug 10 16:05:52 2023
 Response via : Initial Calibration
 Integrator: ChemStation

Volume Inj. : 1 ul
 Signal Phase : Rxi-1ms
 Signal Info : 20M x 0.18mm x 0.18um

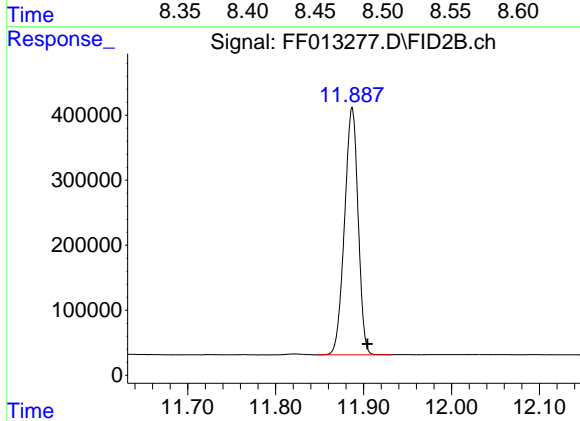




#6 n-Tetradecane (C14)

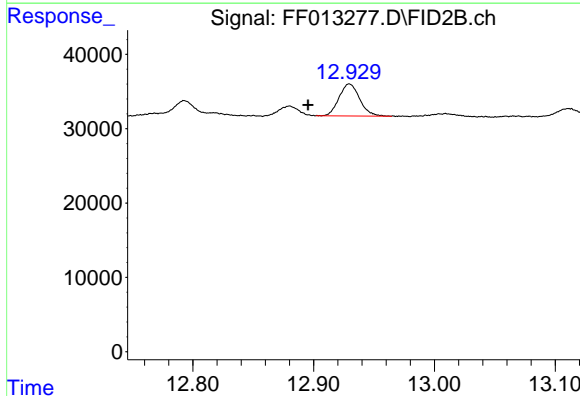
R.T.: 8.483 min
 Delta R.T.: -0.051 min
 Response: 48488
 Conc: 0.45 ug/ml

Instrument :
 FID_F
 ClientSampleId :



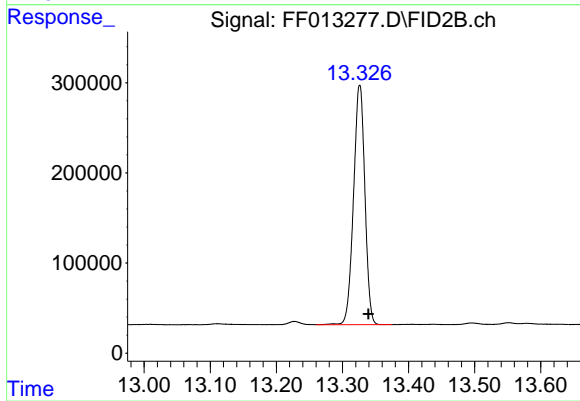
#9 ortho-Terphenyl (SURR)

R.T.: 11.887 min
 Delta R.T.: -0.017 min
 Response: 4081440
 Conc: 29.71 ug/ml



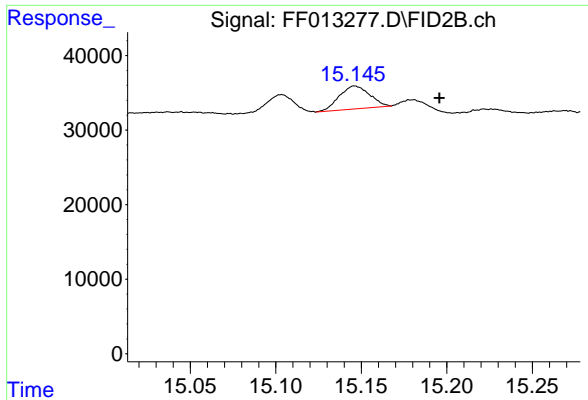
#10 n-Eicosane (C20)

R.T.: 12.930 min
 Delta R.T.: 0.034 min
 Response: 51319
 Conc: 0.47 ug/ml



#12 1-chlorooctadecane (SURR)

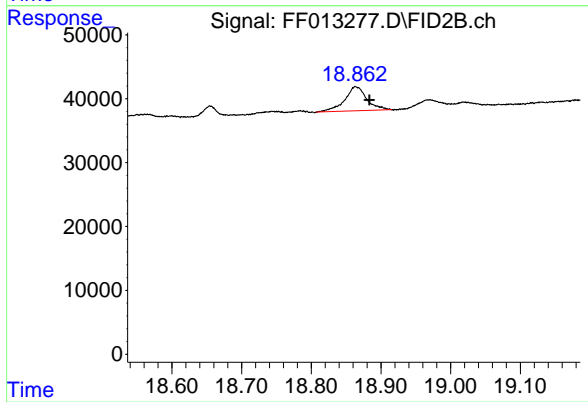
R.T.: 13.326 min
 Delta R.T.: -0.013 min
 Response: 3168365
 Conc: 30.23 ug/ml



#14 n-Tetracosane (C24)

R.T.: 15.146 min
Delta R.T.: -0.049 min
Response: 38007
Conc: 0.35 ug/ml

Instrument :
FID_F
ClientSampleId :



#18 n-Dotriacontane (C32)

R.T.: 18.863 min
Delta R.T.: -0.020 min
Response: 82175
Conc: 0.73 ug/ml