

Data Path : Z:\pestpcbsrv\HPCHEM1\FID_F\Data\FF082823AL\
 Data File : FF013421.D
 Signal(s) : FID2B.ch
 Acq On : 29 Aug 2023 02:50
 Operator : YP\AJ
 Sample : 04188-06
 Misc :
 ALS Vial : 81 Sample Multiplier: 1

Instrument :
 FID_F
 ClientSampleId :

Integration File: autoint1.e
 Quant Time: Aug 29 04:38:05 2023
 Quant Method : Z:\pestpcbsrv\HPCHEM1\FID_F\Method\Aliphatic EPH 081023.M
 Quant Title : GC Extractables
 QLast Update : Thu Aug 10 16:05:52 2023
 Response via : Initial Calibration
 Integrator: ChemStation

Volume Inj. : 1 ul
 Signal Phase : Rxi-1ms
 Signal Info : 20M x 0.18mm x 0.18um

Compound	R.T.	Response	Conc Units

System Monitoring Compounds			
9) S ortho-Terphenyl (SURR)	11.895	3446568	25.085 ug/ml
Spiked Amount	50.000	Recovery	= 50.17%
12) S 1-chlorooctadecane (S...	13.334	2760290	26.340 ug/ml
Spiked Amount	50.000	Recovery	= 52.68%
Target Compounds			
1) T n-Nonane (C9)	3.228f	76756	0.718 ug/ml
10) T n-Eicosane (C20)	12.942	232745	2.121 ug/ml
14) T n-Tetracosane (C24)	15.160	111571	1.016 ug/ml

(f)=RT Delta > 1/2 Window

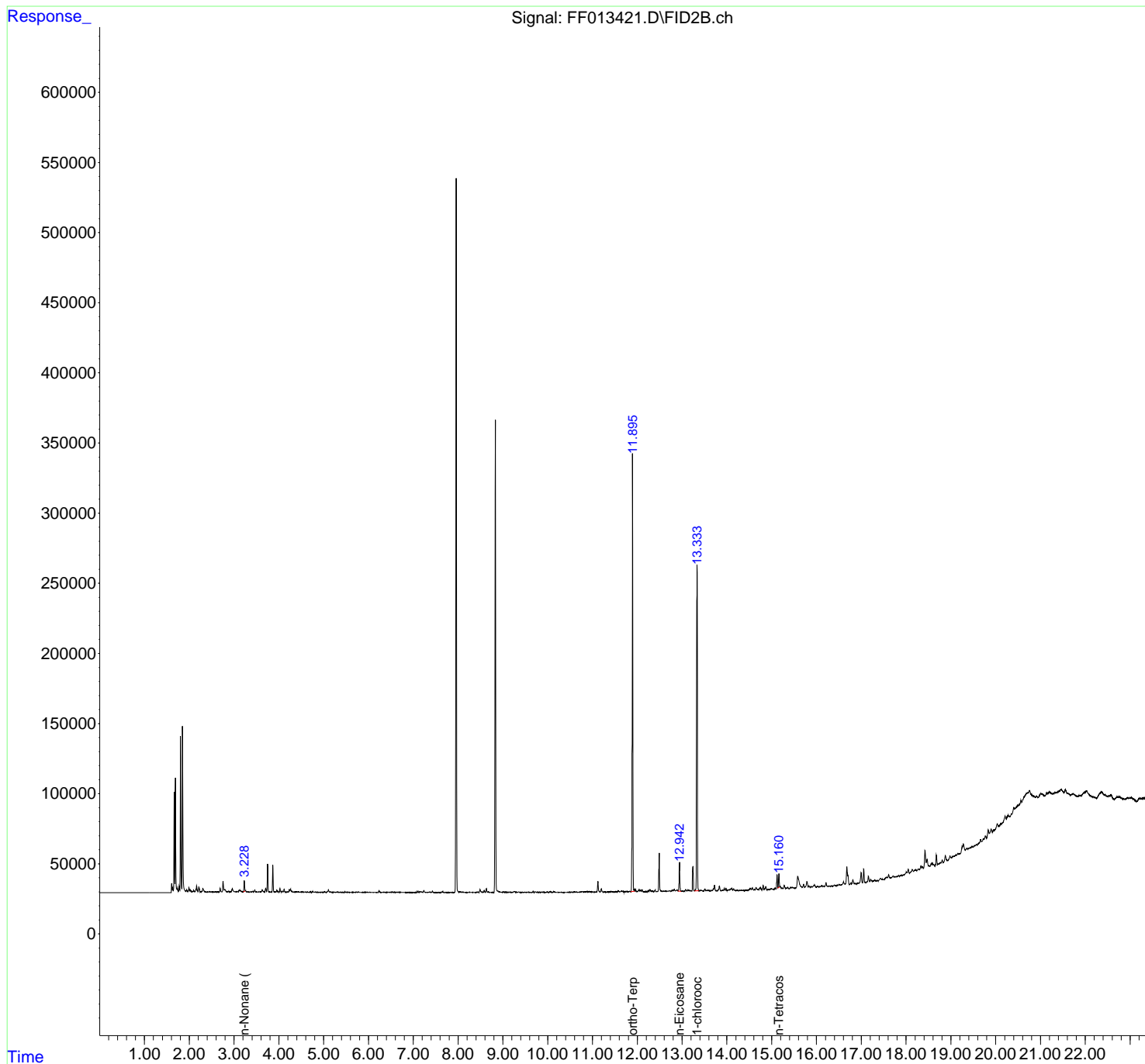
(m)=manual int.

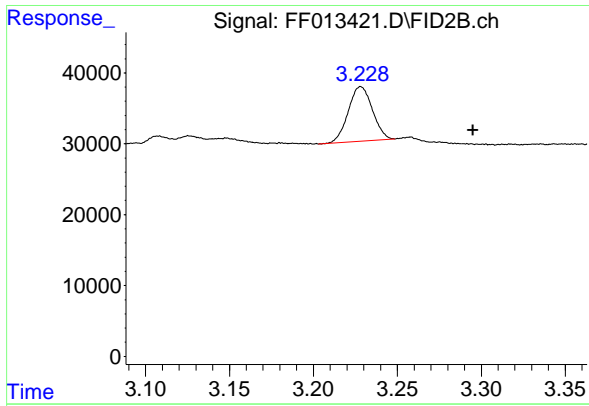
Data Path : Z:\pestpcbsrv\HPCHEM1\FID_F\Data\FF082823AL\
 Data File : FF013421.D
 Signal(s) : FID2B.ch
 Acq On : 29 Aug 2023 02:50
 Operator : YP\AJ
 Sample : 04188-06
 Misc :
 ALS Vial : 81 Sample Multiplier: 1

Instrument :
 FID_F
 ClientSampleId :

Integration File: autoint1.e
 Quant Time: Aug 29 04:38:05 2023
 Quant Method : Z:\pestpcbsrv\HPCHEM1\FID_F\Method\Aliphatic EPH 081023.M
 Quant Title : GC Extractables
 QLast Update : Thu Aug 10 16:05:52 2023
 Response via : Initial Calibration
 Integrator: ChemStation

Volume Inj. : 1 ul
 Signal Phase : Rxi-1ms
 Signal Info : 20M x 0.18mm x 0.18um

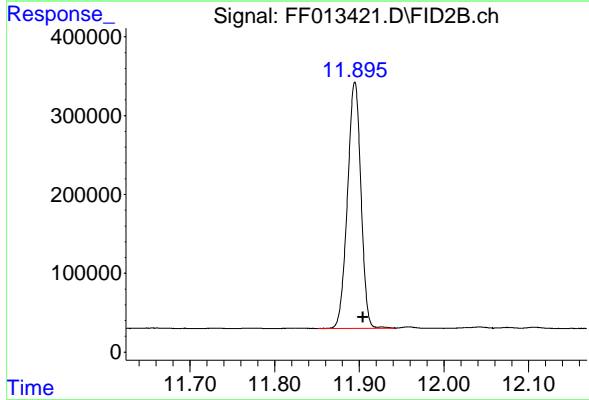




#1 n-Nonane (C9)

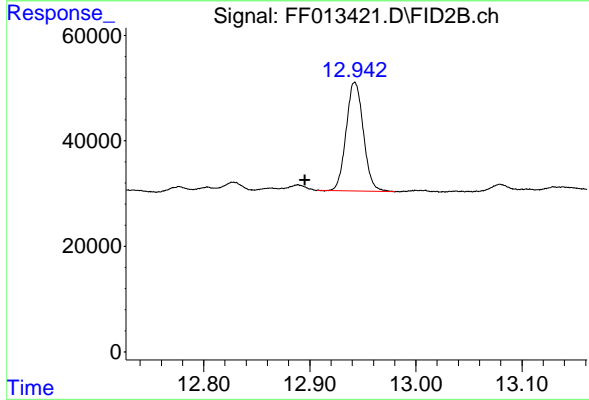
R.T.: 3.228 min
 Delta R.T.: -0.067 min
 Response: 76756
 Conc: 0.72 ug/ml

Instrument :
 FID_F
 ClientSampleId :



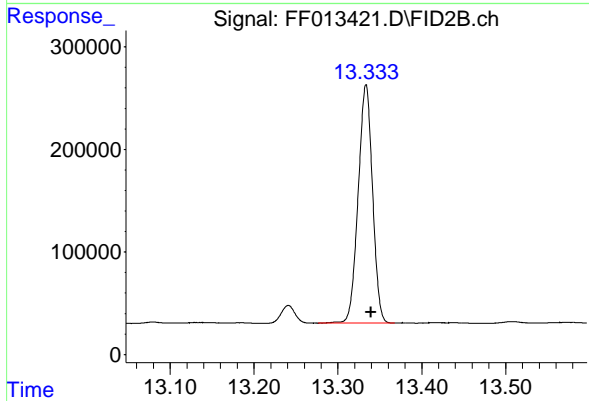
#9 ortho-Terphenyl (SURR)

R.T.: 11.895 min
 Delta R.T.: -0.010 min
 Response: 3446568
 Conc: 25.09 ug/ml



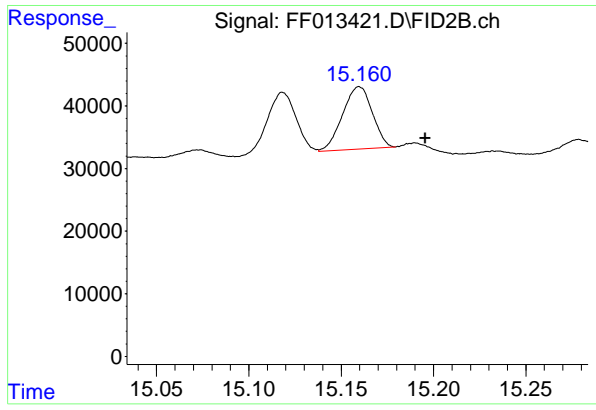
#10 n-Eicosane (C20)

R.T.: 12.942 min
 Delta R.T.: 0.047 min
 Response: 232745
 Conc: 2.12 ug/ml



#12 1-chlorooctadecane (SURR)

R.T.: 13.334 min
 Delta R.T.: -0.006 min
 Response: 2760290
 Conc: 26.34 ug/ml



#14 n-Tetracosane (C24)

R.T.: 15.160 min

Delta R.T.: -0.036 min

Response: 111571

Conc: 1.02 ug/ml

Instrument :

FID_F

ClientSampleId :