

Data Path : Z:\pestpcbsrv\HPCHEM1\FID_F\Data\FF082923AL\
 Data File : FF013446.D
 Signal(s) : FID2B.ch
 Acq On : 29 Aug 2023 19:39
 Operator : YP\AJ
 Sample : 04197-26
 Misc :
 ALS Vial : 71 Sample Multiplier: 1

Instrument :
 FID_F
 ClientSampleId :

Integration File: autoint1.e
 Quant Time: Aug 29 23:13:07 2023
 Quant Method : Z:\pestpcbsrv\HPCHEM1\FID_F\Method\Aliphatic EPH 081023.M
 Quant Title : GC Extractables
 QLast Update : Thu Aug 10 16:05:52 2023
 Response via : Initial Calibration
 Integrator: ChemStation

Volume Inj. : 1 ul
 Signal Phase : Rxi-1ms
 Signal Info : 20M x 0.18mm x 0.18um

| Compound | R.T. | Response | Conc Units |
|--------------------------------|--------|----------|--------------|
| ----- | | | |
| System Monitoring Compounds | | | |
| 9) S ortho-Terphenyl (SURR) | 11.892 | 4198579 | 30.559 ug/ml |
| Spiked Amount | 50.000 | Recovery | = 61.12% |
| 12) S 1-chlorooctadecane (S... | 13.332 | 3341286 | 31.884 ug/ml |
| Spiked Amount | 50.000 | Recovery | = 63.77% |
| Target Compounds | | | |
| 1) T n-Nonane (C9) | 3.226f | 90846 | 0.850 ug/ml |
| ----- | | | |

(f)=RT Delta > 1/2 Window

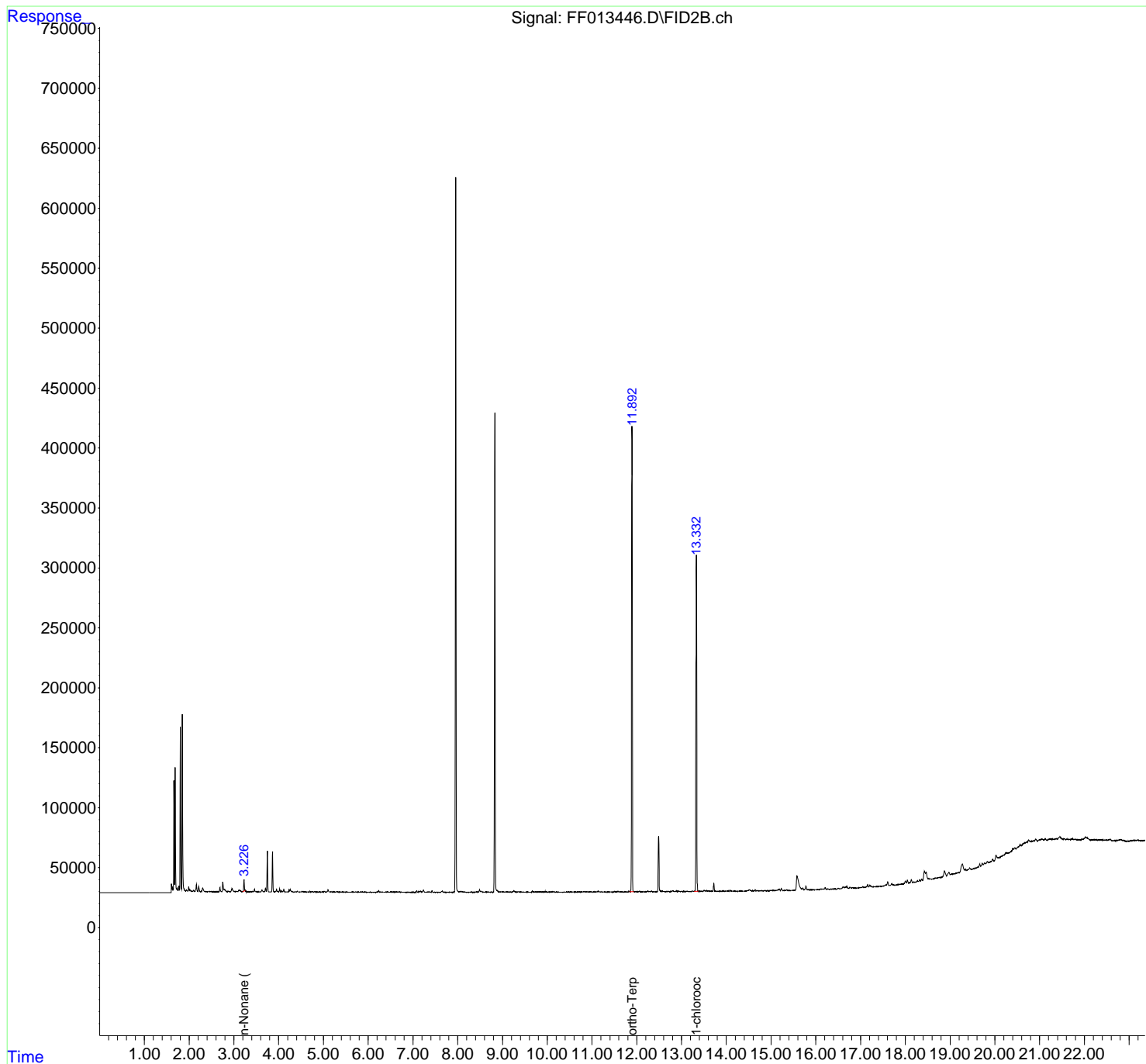
(m)=manual int.

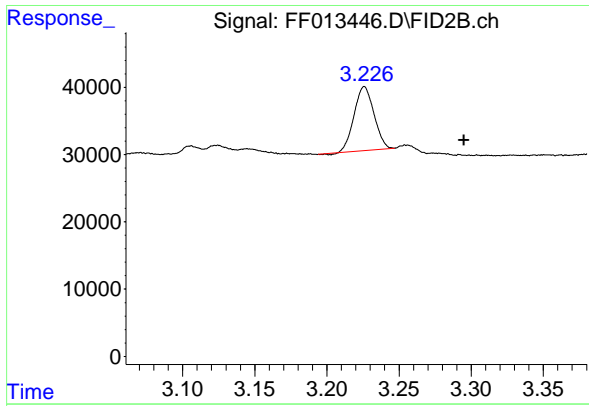
Data Path : Z:\pestpcbsrv\HPCHEM1\FID_F\Data\FF082923AL\
 Data File : FF013446.D
 Signal(s) : FID2B.ch
 Acq On : 29 Aug 2023 19:39
 Operator : YP\AJ
 Sample : 04197-26
 Misc :
 ALS Vial : 71 Sample Multiplier: 1

Instrument :
 FID_F
 ClientSampleId :

Integration File: autoint1.e
 Quant Time: Aug 29 23:13:07 2023
 Quant Method : Z:\pestpcbsrv\HPCHEM1\FID_F\Method\Aliphatic EPH 081023.M
 Quant Title : GC Extractables
 QLast Update : Thu Aug 10 16:05:52 2023
 Response via : Initial Calibration
 Integrator: ChemStation

Volume Inj. : 1 ul
 Signal Phase : Rxi-1ms
 Signal Info : 20M x 0.18mm x 0.18um

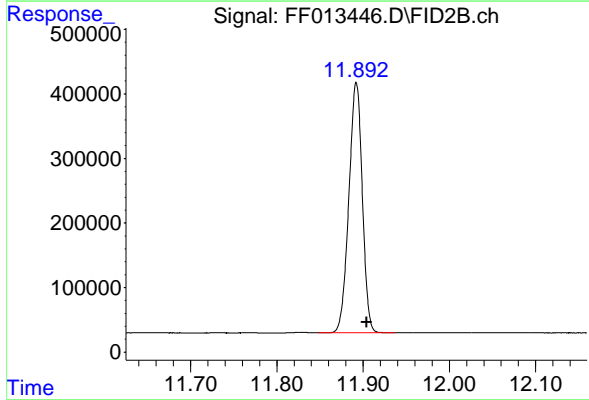




#1 n-Nonane (C9)

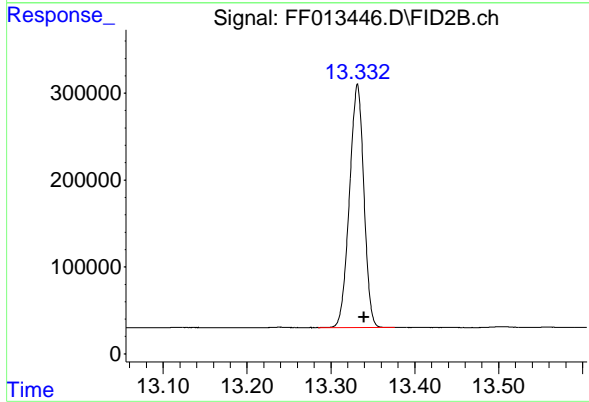
R.T.: 3.226 min
Delta R.T.: -0.069 min
Response: 90846
Conc: 0.85 ug/ml

Instrument :
FID_F
ClientSampleId :



#9 ortho-Terphenyl (SURR)

R.T.: 11.892 min
Delta R.T.: -0.012 min
Response: 4198579
Conc: 30.56 ug/ml



#12 1-chlorooctadecane (SURR)

R.T.: 13.332 min
Delta R.T.: -0.008 min
Response: 3341286
Conc: 31.88 ug/ml