

Data Path : Z:\pestpcbsrv\HPCHEM1\FID_E\Data\FE090325AL\
Data File : FE055637.D
Signal(s) : FID1B.ch
Acq On : 03 Sep 2025 14:24
Operator : YP\AJ
Sample : I.BLK
Misc :
ALS Vial : 1 Sample Multiplier: 1

Integration File: autoint1.e
Quant Time: Sep 04 05:09:51 2025
Quant Method : Z:\pestpcbsrv\HPCHEM1\FID_E\methods\Aliphatic EPH 082925.M
Quant Title : GC Extractables
QLast Update : Fri Aug 29 08:12:09 2025
Response via : Initial Calibration
Integrator: ChemStation

Volume Inj. : 1 ul
Signal Phase : Rxi-1ms
Signal Info : 20M x 0.18mm x 0.18um

Compound	R.T.	Response	Conc Units

System Monitoring Compounds			
Target Compounds			
18) T n-Dotriacontane (C32)	19.073	94490	0.644 ug/ml

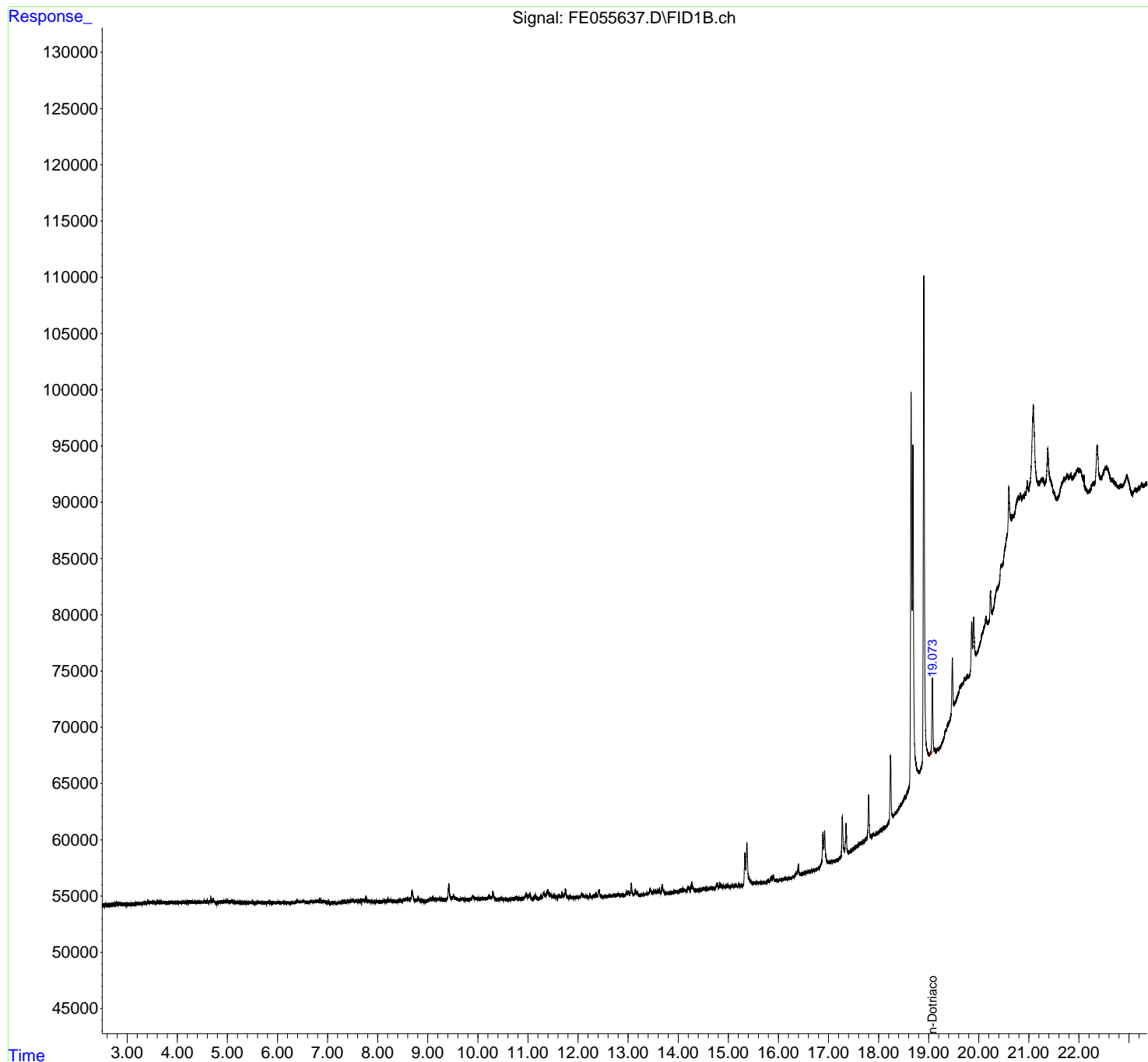
(f)=RT Delta > 1/2 Window

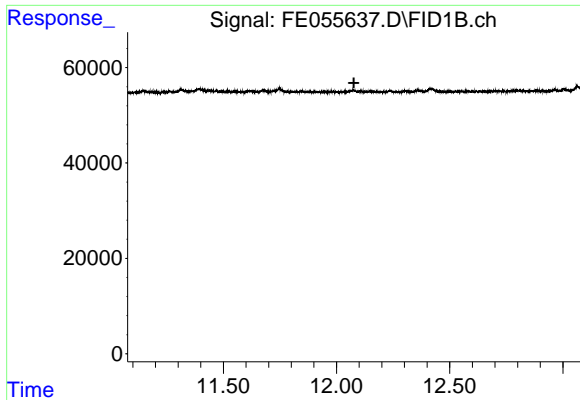
(m)=manual int.

Data Path : Z:\pestpcbsrv\HPCHEM1\FID_E\Data\FE090325AL\
Data File : FE055637.D
Signal(s) : FID1B.ch
Acq On : 03 Sep 2025 14:24
Operator : YP\AJ
Sample : I.BLK
Misc :
ALS Vial : 1 Sample Multiplier: 1

Integration File: autoint1.e
Quant Time: Sep 04 05:09:51 2025
Quant Method : Z:\pestpcbsrv\HPCHEM1\FID_E\methods\Aliphatic EPH 082925.M
Quant Title : GC Extractables
QLast Update : Fri Aug 29 08:12:09 2025
Response via : Initial Calibration
Integrator: ChemStation

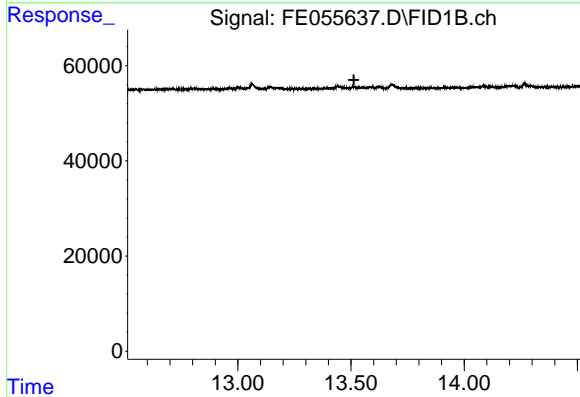
Volume Inj. : 1 ul
Signal Phase : Rxi-1ms
Signal Info : 20M x 0.18mm x 0.18um





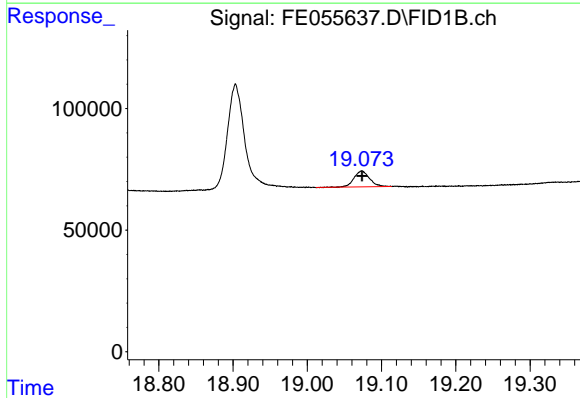
#9 ortho-Terphenyl (SURR)

R.T.: 0.000 min
 Exp R.T. : 12.077 min
 Response: 0
 Conc: N.D.



#12 1-chlorooctadecane (SURR)

R.T.: 0.000 min
 Exp R.T. : 13.513 min
 Response: 0
 Conc: N.D.



#18 n-Dotriacontane (C32)

R.T.: 19.073 min
 Delta R.T.: 0.000 min
 Response: 94490
 Conc: 0.64 ug/ml