

Data Path : Z:\pestpcbsrv\HPCHEM1\FID\_F\Data\FF090325AR\  
 Data File : FF016314.D  
 Signal(s) : FID2B.ch  
 Acq On : 03 Sep 2025 09:26  
 Operator : YP\AJ  
 Sample : PB169426BL  
 Misc :  
 ALS Vial : 61 Sample Multiplier: 1

Integration File: autoint1.e  
 Quant Time: Sep 04 01:26:47 2025  
 Quant Method : Z:\pestpcbsrv\HPCHEM1\FID\_F\Method\Aromatic EPH 083025.M  
 Quant Title : GC Extractables  
 QLast Update : Fri Aug 29 09:10:12 2025  
 Response via : Initial Calibration  
 Integrator: ChemStation

Volume Inj. : 1 µl  
 Signal Phase : Rxi-1ms  
 Signal Info : 20M x 0.18mm x 0.18µm

Compound	R.T.	Response	Conc Units
-----			
System Monitoring Compounds			
4) S 2-Bromonaphthalene (S...	8.026	6356420	53.171 ug/ml
Spiked Amount 50.000		Recovery =	106.34%
6) S 2-Fluorobiphenyl (SURR)	8.902	4291802	51.827 ug/ml
Spiked Amount 50.000 Range 0 - 131		Recovery =	103.65%
11) S ortho-Terphenyl (SURR)	11.975	7210917	49.720 ug/ml
Spiked Amount 50.000		Recovery =	99.44%

Target Compounds

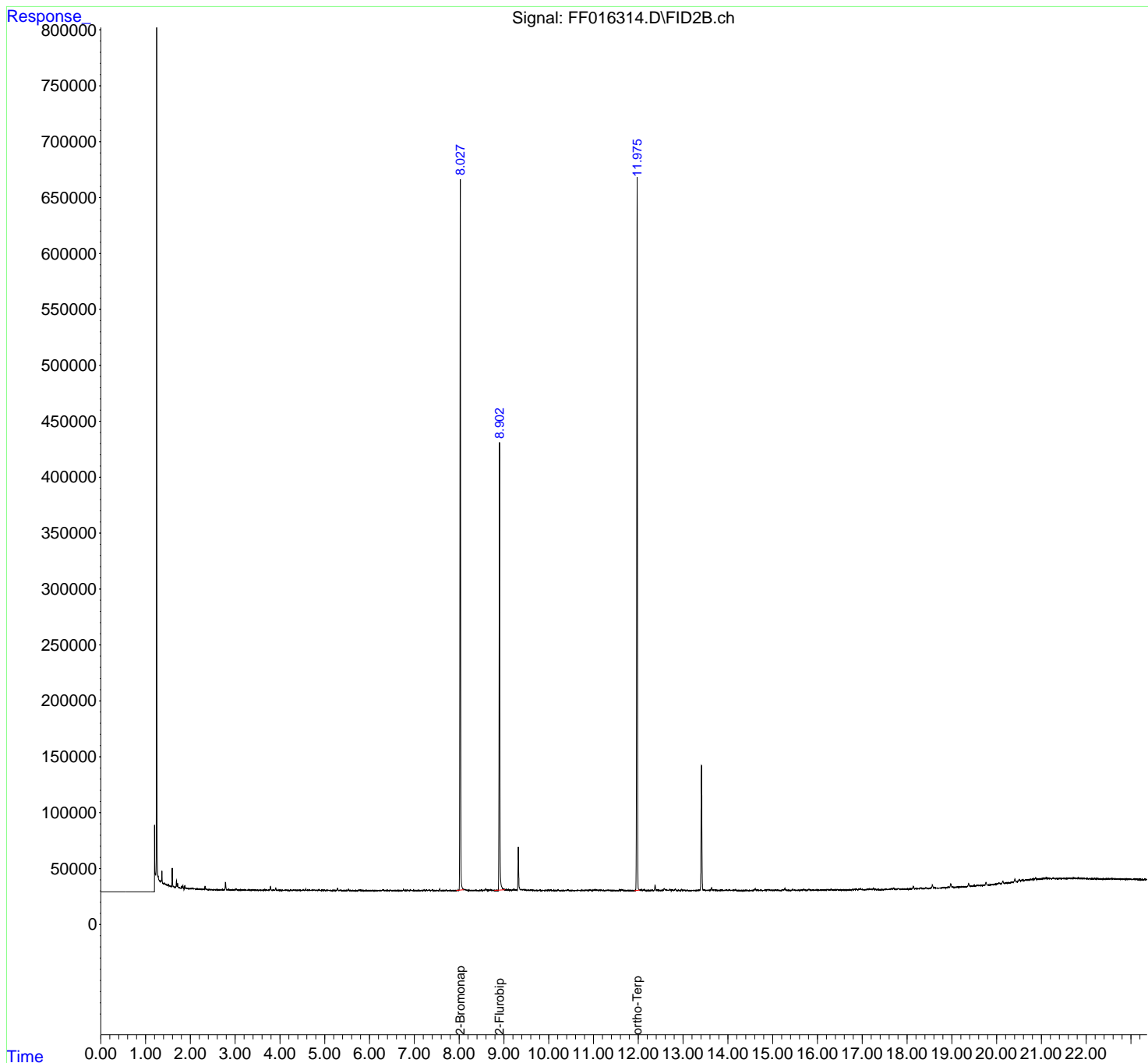
(f)=RT Delta > 1/2 Window

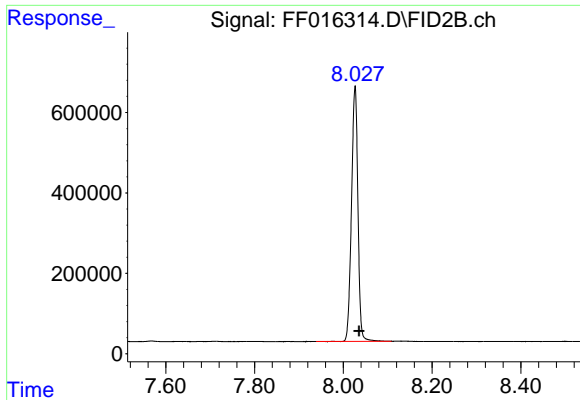
(m)=manual int.

Data Path : Z:\pestpcbsrv\HPCHEM1\FID\_F\Data\FF090325AR\  
 Data File : FF016314.D  
 Signal(s) : FID2B.ch  
 Acq On : 03 Sep 2025 09:26  
 Operator : YP\AJ  
 Sample : PB169426BL  
 Misc :  
 ALS Vial : 61 Sample Multiplier: 1

Integration File: autoint1.e  
 Quant Time: Sep 04 01:26:47 2025  
 Quant Method : Z:\pestpcbsrv\HPCHEM1\FID\_F\Method\Aromatic EPH 083025.M  
 Quant Title : GC Extractables  
 QLast Update : Fri Aug 29 09:10:12 2025  
 Response via : Initial Calibration  
 Integrator: ChemStation

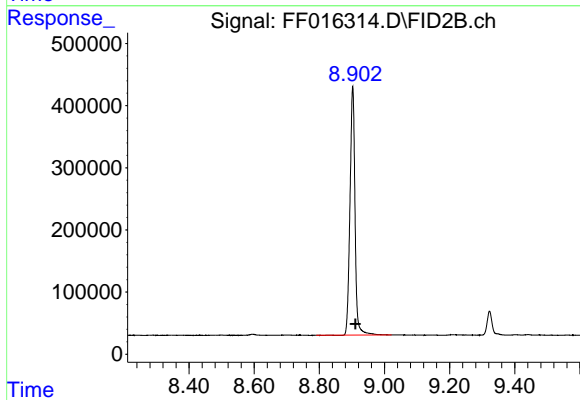
Volume Inj. : 1 µl  
 Signal Phase : Rxi-1ms  
 Signal Info : 20M x 0.18mm x 0.18µm





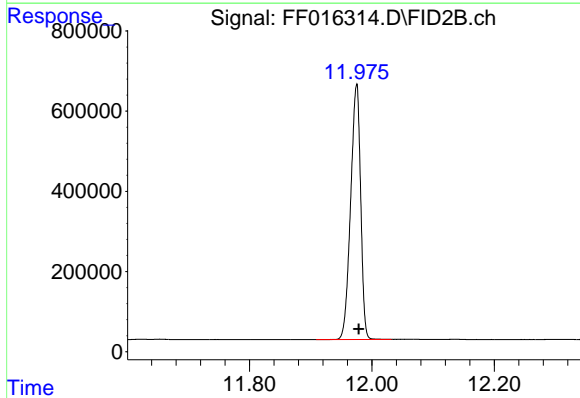
#4 2-Bromonaphthalene (SURR)

R.T.: 8.026 min  
Delta R.T.: -0.009 min  
Response: 6356420  
Conc: 53.17 ug/ml



#6 2-Fluorobiphenyl (SURR)

R.T.: 8.902 min  
Delta R.T.: -0.008 min  
Response: 4291802  
Conc: 51.83 ug/ml



#11 ortho-Terphenyl (SURR)

R.T.: 11.975 min  
Delta R.T.: -0.004 min  
Response: 7210917  
Conc: 49.72 ug/ml