

Data Path : Z:\pestpcbsrv\HPCHEM1\FID_F\Data\FF090325AR\
 Data File : FF016323.D
 Signal(s) : FID2B.ch
 Acq On : 03 Sep 2025 13:51
 Operator : YP\AJ
 Sample : 20 PPM AROMATIC HC STD
 Misc :
 ALS Vial : 31 Sample Multiplier: 1

Integration File: autoint1.e
 Quant Time: Sep 04 01:30:19 2025
 Quant Method : Z:\pestpcbsrv\HPCHEM1\FID_F\Method\Aromatic EPH 083025.M
 Quant Title : GC Extractables
 QLast Update : Fri Aug 29 09:10:12 2025
 Response via : Initial Calibration
 Integrator: ChemStation

Volume Inj. : 1 µl
 Signal Phase : Rxi-1ms
 Signal Info : 20M x 0.18mm x 0.18µm

Compound	R.T.	Response	Conc Units

System Monitoring Compounds			
4) S 2-Bromonaphthalene (S... Spiked Amount 50.000	8.031	2438731	20.400 ug/ml Recovery = 40.80%
6) S 2-Fluorobiphenyl (SURR) Spiked Amount 50.000 Range 0 - 131	8.906	1673850	20.213 ug/ml Recovery = 40.43%
11) S ortho-Terphenyl (SURR) Spiked Amount 50.000	11.974	2812818	19.395 ug/ml Recovery = 38.79%
Target Compounds			
1) T 1,2,3-Trimethylbenzen...	4.626	2635051	20.334 ug/ml
2) T Naphthalene (C11.7)	6.302	2722828	19.904 ug/ml
3) T 2-Methylnaphthalene (...)	7.401	2690569	19.238 ug/ml
5) T Acenaphthylene (C15.06)	8.706	2770696	19.734 ug/ml
7) T Acenaphthene (C15.5)	9.006	2715381	19.373 ug/ml
8) T Flouorene (C16.55)	9.796	2758268	19.740 ug/ml
9) T Phenanthrene (C19.36)	11.203	2727198	19.341 ug/ml
10) T Anthracene (C19.43)	11.277	2466536	17.839 ug/ml
12) T Fluoranthene (C21.85)	13.025	2659225	18.851 ug/ml
13) T Pyrene (C20.8)	13.324	2680537	19.153 ug/ml
14) T Benzo[a]anthracene (C...)	15.206	2540058	19.206 ug/ml
15) T Chrysene (C27.41)	15.249	2591340	19.011 ug/ml
16) T benzo[b]fluoranthene ...	16.766	2493936	19.137 ug/ml
17) T Bnezo[k]fluoranthene ...	16.799	2522388	20.163 ug/ml
18) T Benzo[a]pyrene (C31.34)	17.146	2341597	18.323 ug/ml
19) T Indeno[1,2,3-cd]pyren...	18.519	2150255	18.823 ug/ml
20) T Dibenz[a,h]anthracene...	18.560	2448662	19.508 ug/ml
21) T Benzo[g,h,i]perylene ...	18.776	2335764	18.941 ug/ml

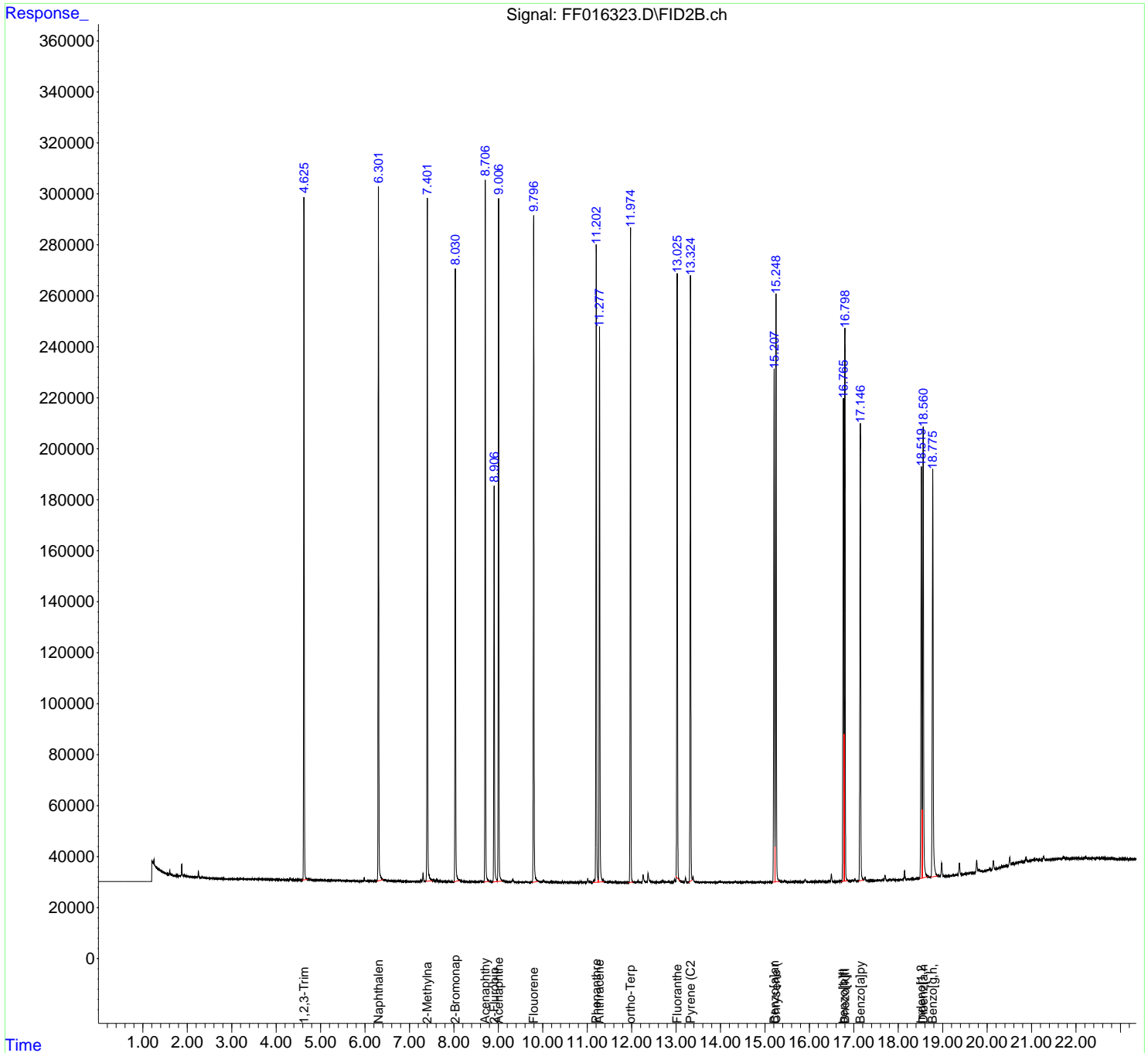
(f)=RT Delta > 1/2 Window

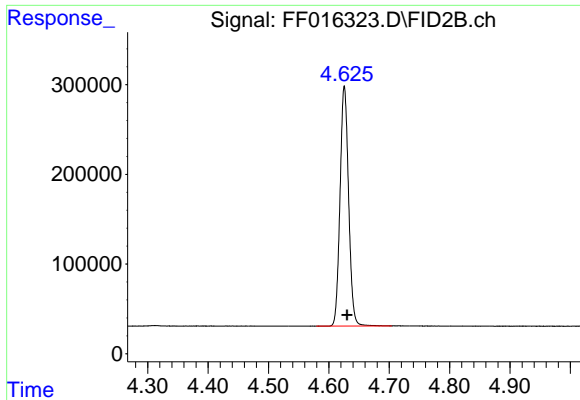
(m)=manual int.

Data Path : Z:\pestpcbsrv\HPCHEM1\FID_F\Data\FF090325AR\
 Data File : FF016323.D
 Signal(s) : FID2B.ch
 Acq On : 03 Sep 2025 13:51
 Operator : YP\AJ
 Sample : 20 PPM AROMATIC HC STD
 Misc :
 ALS Vial : 31 Sample Multiplier: 1

Integration File: autoint1.e
 Quant Time: Sep 04 01:30:19 2025
 Quant Method : Z:\pestpcbsrv\HPCHEM1\FID_F\Method\Aromatic EPH 083025.M
 Quant Title : GC Extractables
 QLast Update : Fri Aug 29 09:10:12 2025
 Response via : Initial Calibration
 Integrator: ChemStation

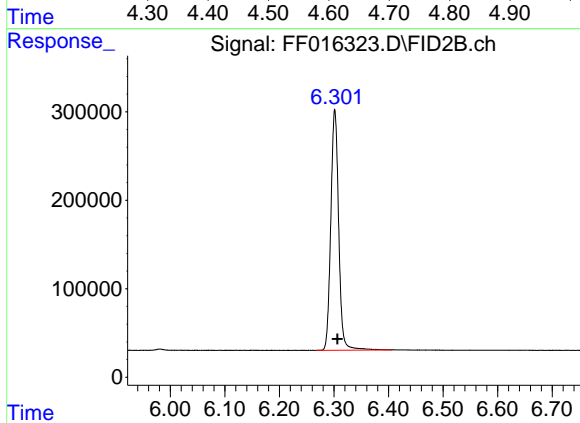
Volume Inj. : 1 µl
 Signal Phase : Rxi-1ms
 Signal Info : 20M x 0.18mm x 0.18µm





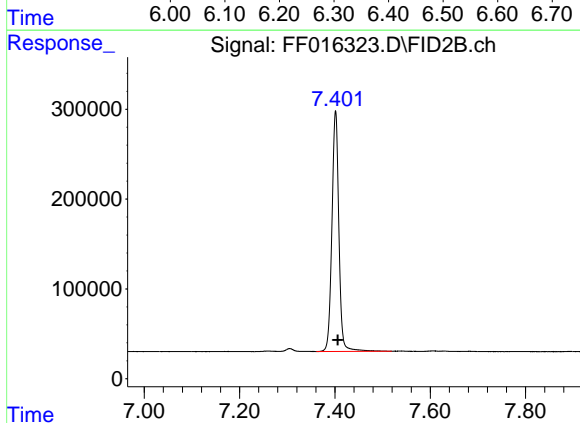
#1 1,2,3-Trimethylbenzene (C10.1)

R.T.: 4.626 min
Delta R.T.: -0.004 min
Response: 2635051
Conc: 20.33 ug/ml



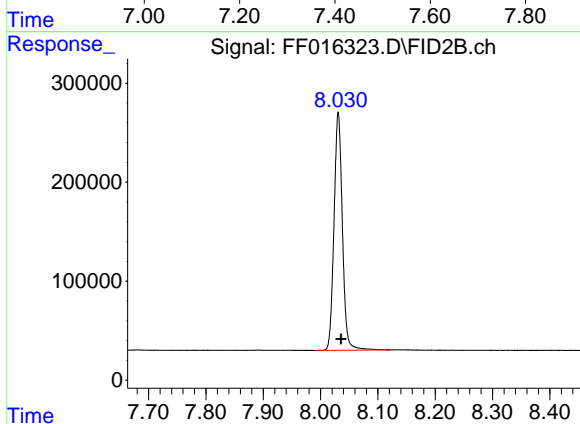
#2 Naphthalene (C11.7)

R.T.: 6.302 min
Delta R.T.: -0.005 min
Response: 2722828
Conc: 19.90 ug/ml



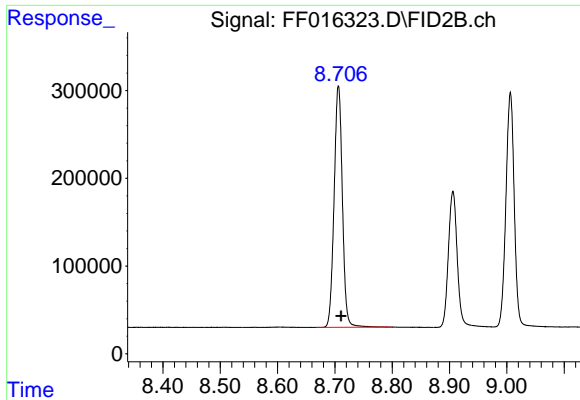
#3 2-Methylnaphthalene (C12.89)

R.T.: 7.401 min
Delta R.T.: -0.005 min
Response: 2690569
Conc: 19.24 ug/ml



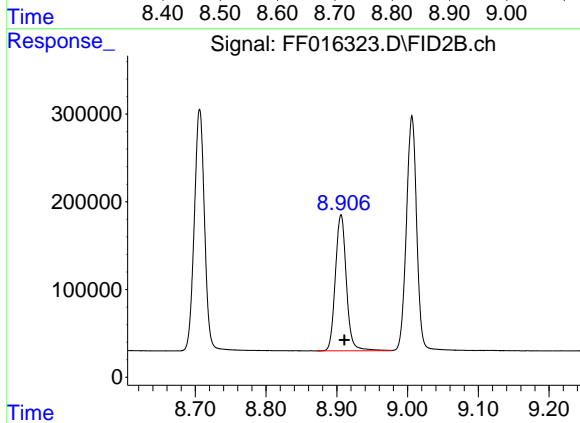
#4 2-Bromonaphthalene (SURR)

R.T.: 8.031 min
Delta R.T.: -0.005 min
Response: 2438731
Conc: 20.40 ug/ml



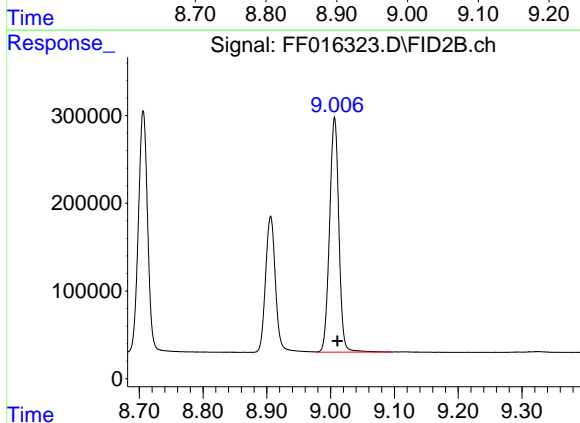
#5 Acenaphthylene (C15.06)

R.T.: 8.706 min
Delta R.T.: -0.005 min
Response: 2770696
Conc: 19.73 ug/ml



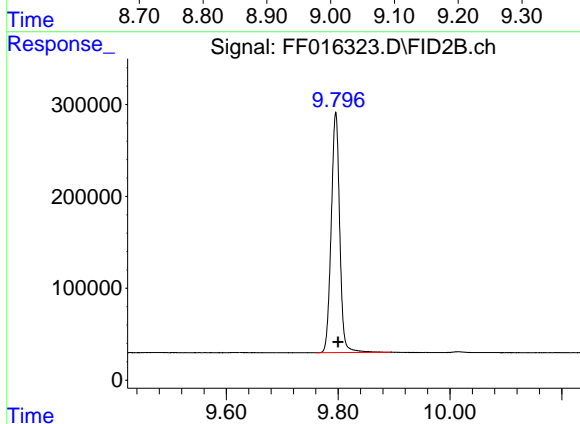
#6 2-Fluorobiphenyl (SURR)

R.T.: 8.906 min
Delta R.T.: -0.005 min
Response: 1673850
Conc: 20.21 ug/ml



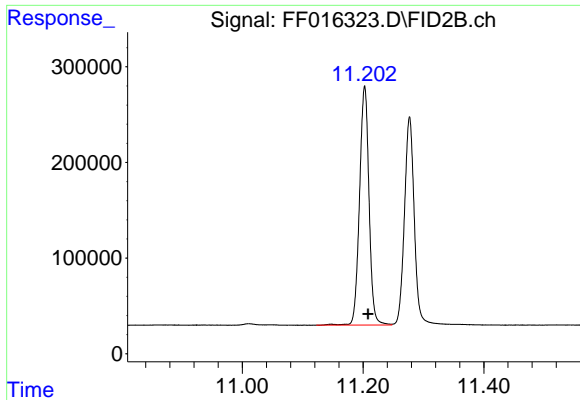
#7 Acenaphthene (C15.5)

R.T.: 9.006 min
Delta R.T.: -0.005 min
Response: 2715381
Conc: 19.37 ug/ml

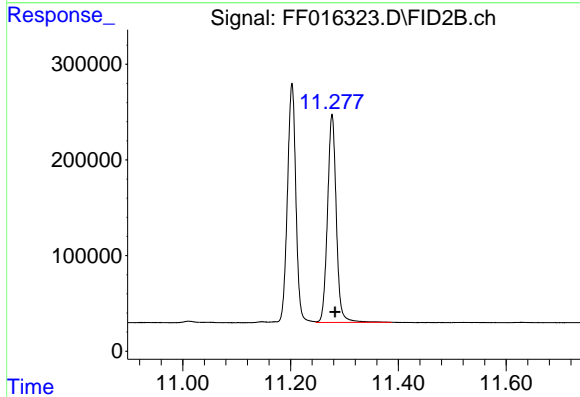


#8 Fluorene (C16.55)

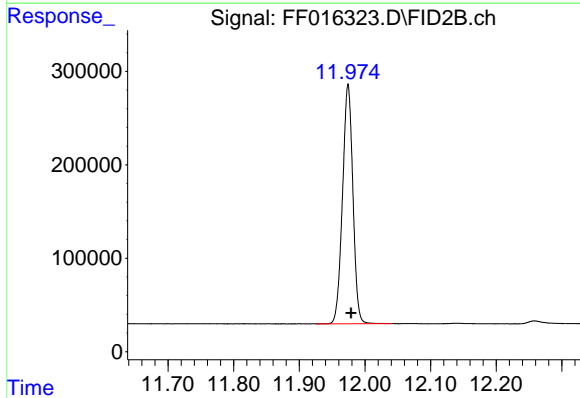
R.T.: 9.796 min
Delta R.T.: -0.004 min
Response: 2758268
Conc: 19.74 ug/ml



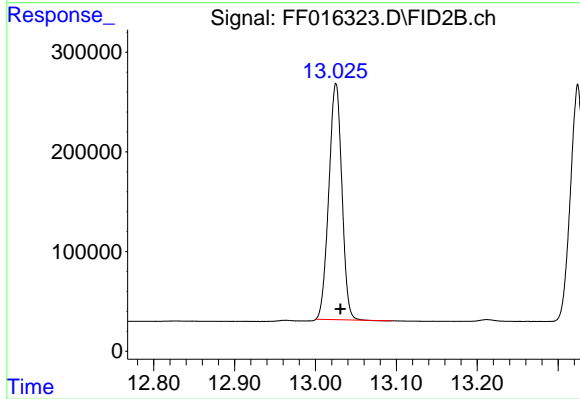
#9 Phenanthrene (C19.36)
R.T.: 11.203 min
Delta R.T.: -0.005 min
Response: 2727198
Conc: 19.34 ug/ml



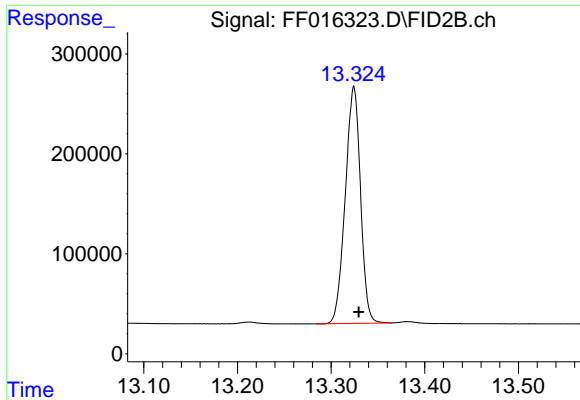
#10 Anthracene (C19.43)
R.T.: 11.277 min
Delta R.T.: -0.006 min
Response: 2466536
Conc: 17.84 ug/ml



#11 ortho-Terphenyl (SURR)
R.T.: 11.974 min
Delta R.T.: -0.004 min
Response: 2812818
Conc: 19.39 ug/ml

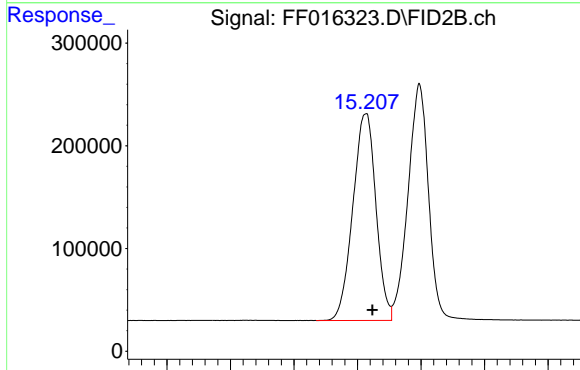


#12 Fluoranthene (C21.85)
R.T.: 13.025 min
Delta R.T.: -0.005 min
Response: 2659225
Conc: 18.85 ug/ml



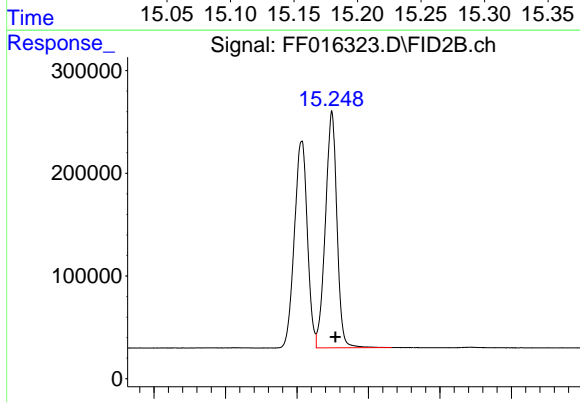
#13 Pyrene (C20.8)

R.T.: 13.324 min
 Delta R.T.: -0.005 min
 Response: 2680537
 Conc: 19.15 ug/ml



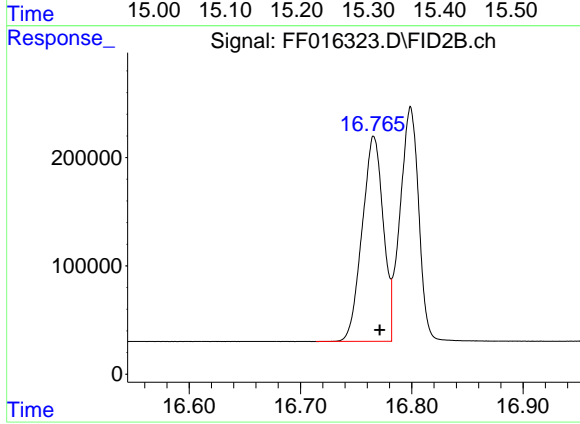
#14 Benzo[a]anthracene (C26.37)

R.T.: 15.206 min
 Delta R.T.: -0.005 min
 Response: 2540058
 Conc: 19.21 ug/ml



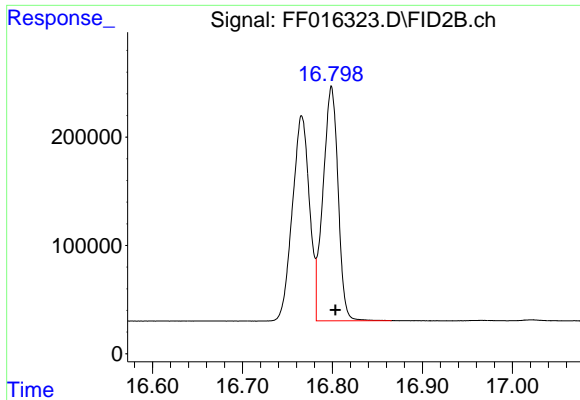
#15 Chrysene (C27.41)

R.T.: 15.249 min
 Delta R.T.: -0.005 min
 Response: 2591340
 Conc: 19.01 ug/ml



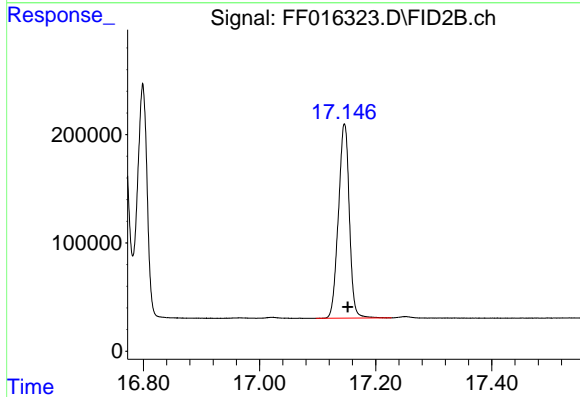
#16 benzo[b]fluoranthene (C30.41)

R.T.: 16.766 min
 Delta R.T.: -0.005 min
 Response: 2493936
 Conc: 19.14 ug/ml



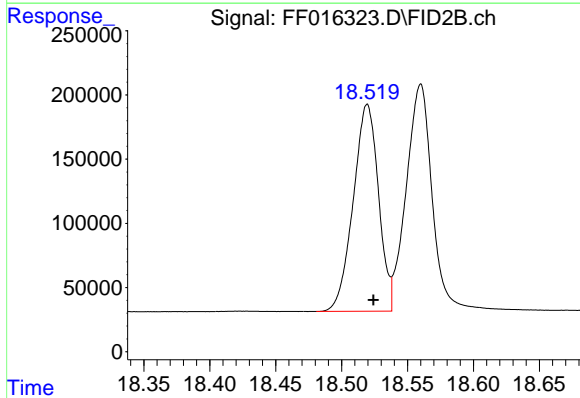
#17 Bnezo[k]fluoranthene (C30.14)

R.T.: 16.799 min
Delta R.T.: -0.005 min
Response: 2522388
Conc: 20.16 ug/ml



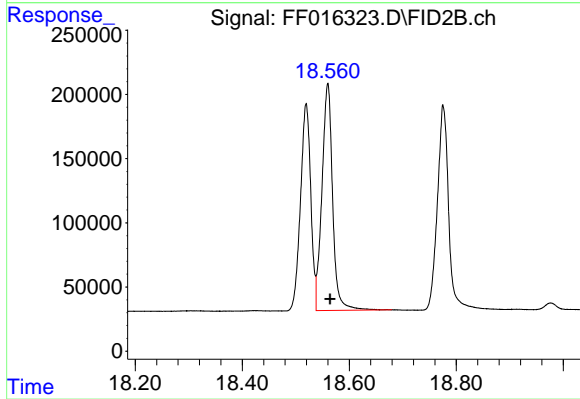
#18 Benzo[a]pyrene (C31.34)

R.T.: 17.146 min
Delta R.T.: -0.005 min
Response: 2341597
Conc: 18.32 ug/ml



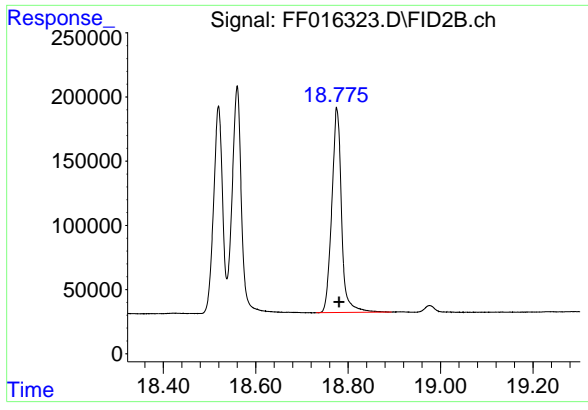
#19 Indeno[1,2,3-cd]pyrene (C35.01)

R.T.: 18.519 min
Delta R.T.: -0.005 min
Response: 2150255
Conc: 18.82 ug/ml



#20 Dibenz[a,h]anthracene (C30.36)

R.T.: 18.560 min
Delta R.T.: -0.004 min
Response: 2448662
Conc: 19.51 ug/ml



#21 Benzo[g,h,i]perylene (C34.01)

R.T.: 18.776 min
Delta R.T.: -0.005 min
Response: 2335764
Conc: 18.94 ug/ml