

Data Path : Z:\pestpcbsrv\HPCHEM1\FID_G\Data\FG090325AL\
 Data File : FG016515.D
 Signal(s) : FID1A.ch
 Acq On : 03 Sep 2025 10:24
 Operator : YP\AJ
 Sample : Q2892-01DL2 1000X
 Misc :
 ALS Vial : 23 Sample Multiplier: 1

Integration File: autoint1.e
 Quant Time: Sep 04 02:09:53 2025
 Quant Method : Z:\pestpcbsrv\HPCHEM1\FID_G\Method\Aliphatic EPH 082825.M
 Quant Title : GC Extractables
 QLast Update : Thu Aug 28 12:01:28 2025
 Response via : Initial Calibration
 Integrator: ChemStation

Volume Inj. : 1 ul
 Signal Phase : Rxi-1ms
 Signal Info : 20M x 0.18mm x 0.18um

Compound	R.T.	Response	Conc Units

System Monitoring Compounds			
9) S ortho-Terphenyl (SURR)	12.046	113516	0.857 ug/ml
Spiked Amount	50.000	Recovery	= 1.71%
12) S 1-chlorooctadecane (S...	13.488	46128	0.458 ug/ml
Spiked Amount	50.000	Recovery	= 0.92%
Target Compounds			
7) T n-Hexadecane (C16)	10.253	71728	0.601 ug/ml

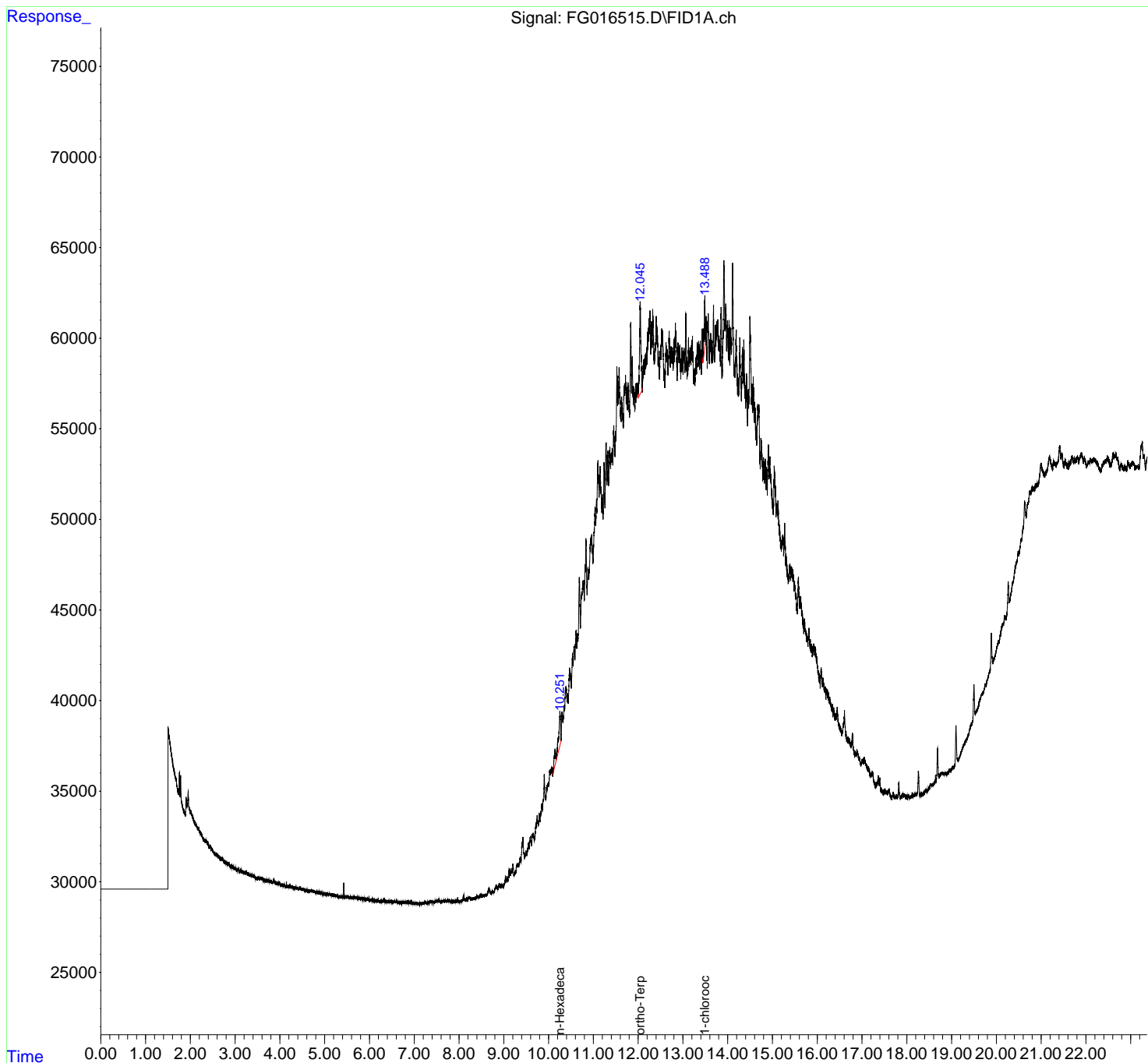
(f)=RT Delta > 1/2 Window

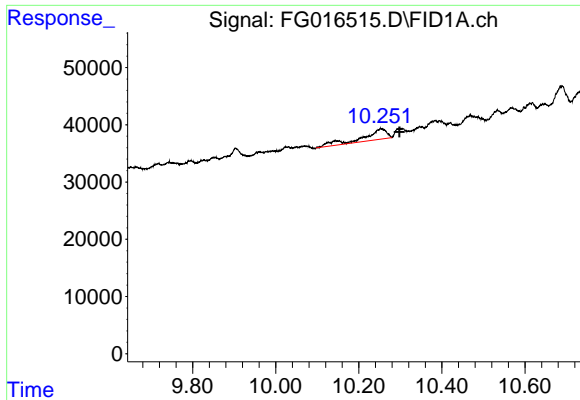
(m)=manual int.

Data Path : Z:\pestpcbsrv\HPCHEM1\FID_G\Data\FG090325AL\
Data File : FG016515.D
Signal(s) : FID1A.ch
Acq On : 03 Sep 2025 10:24
Operator : YP\AJ
Sample : Q2892-01DL2 1000X
Misc :
ALS Vial : 23 Sample Multiplier: 1

Integration File: autoint1.e
Quant Time: Sep 04 02:09:53 2025
Quant Method : Z:\pestpcbsrv\HPCHEM1\FID_G\Method\Aliphatic EPH 082825.M
Quant Title : GC Extractables
QLast Update : Thu Aug 28 12:01:28 2025
Response via : Initial Calibration
Integrator: ChemStation

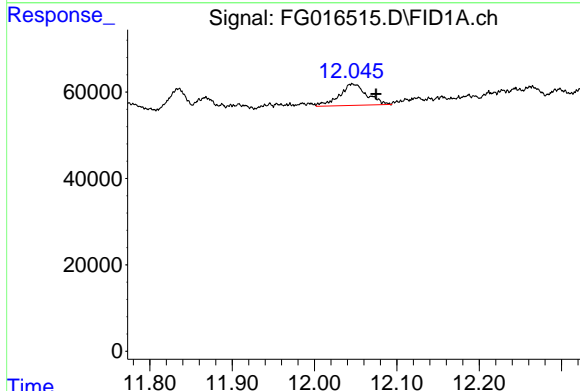
Volume Inj. : 1 ul
Signal Phase : Rxi-1ms
Signal Info : 20M x 0.18mm x 0.18um





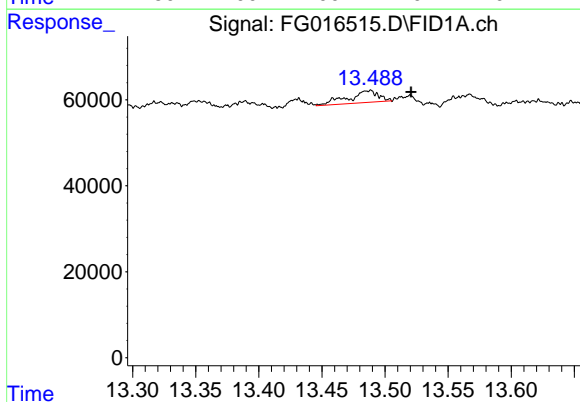
#7 n-Hexadecane (C16)

R.T.: 10.253 min
Delta R.T.: -0.045 min
Response: 71728
Conc: 0.60 ug/ml



#9 ortho-Terphenyl (SURR)

R.T.: 12.046 min
Delta R.T.: -0.029 min
Response: 113516
Conc: 0.86 ug/ml



#12 1-chlorooctadecane (SURR)

R.T.: 13.488 min
Delta R.T.: -0.032 min
Response: 46128
Conc: 0.46 ug/ml