

Data Path : Z:\pestpcbsrv\HPCHEM1\FID_G\Data\FG090325AL\
 Data File : FG016516.D
 Signal(s) : FID1A.ch
 Acq On : 03 Sep 2025 10:54
 Operator : YP\AJ
 Sample : Q2982-05DL 100X
 Misc :
 ALS Vial : 24 Sample Multiplier: 1

Integration File: autoint1.e
 Quant Time: Sep 04 02:10:31 2025
 Quant Method : Z:\pestpcbsrv\HPCHEM1\FID_G\Method\Aliphatic EPH 082825.M
 Quant Title : GC Extractables
 QLast Update : Thu Aug 28 12:01:28 2025
 Response via : Initial Calibration
 Integrator: ChemStation

Volume Inj. : 1 ul
 Signal Phase : Rxi-1ms
 Signal Info : 20M x 0.18mm x 0.18um

Compound	R.T.	Response	Conc Units

System Monitoring Compounds			
9) S ortho-Terphenyl (SURR)	12.067	302379	2.284 ug/ml
Spiked Amount	50.000	Recovery =	4.57%
12) S 1-chlorooctadecane (S...	13.517	204515	2.032 ug/ml
Spiked Amount	50.000	Recovery =	4.06%
Target Compounds			
8) T n-Octadecane (C18)	11.744	115674	0.957 ug/ml
10) T n-Eicosane (C20)	13.060	496032	4.252 ug/ml
11) T n-Heneicosane (C21)	13.747f	71587	0.623 ug/ml

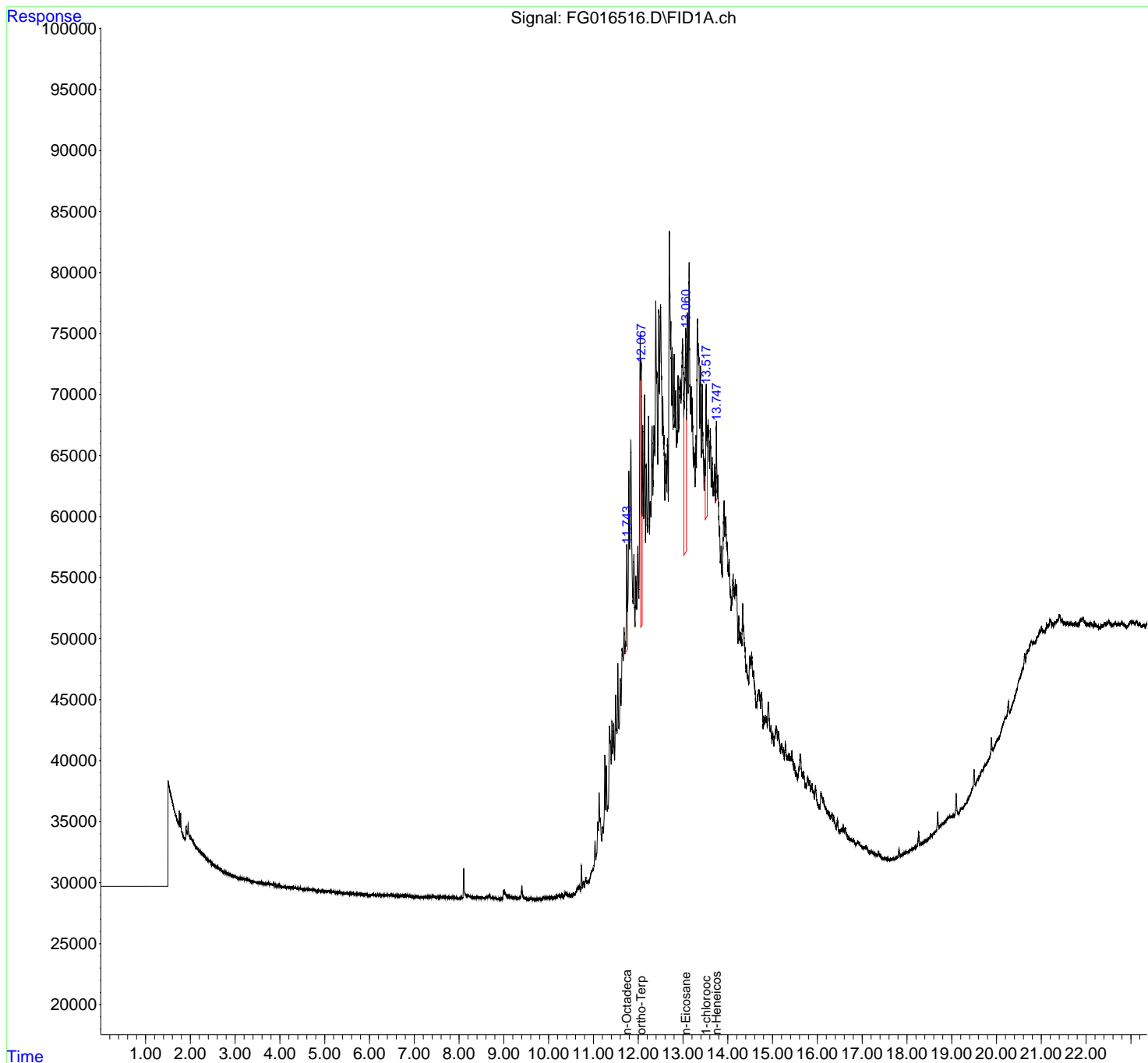
(f)=RT Delta > 1/2 Window

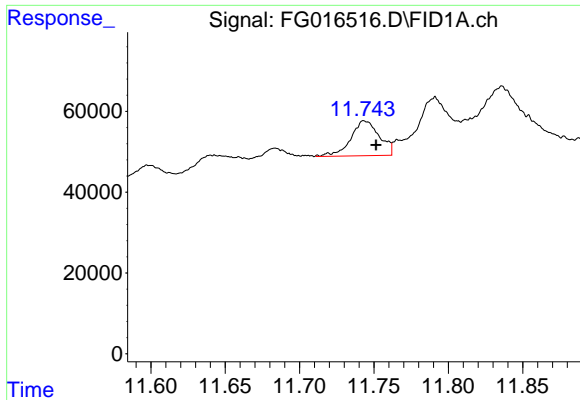
(m)=manual int.

Data Path : Z:\pestpcbsrv\HPCHEM1\FID_G\Data\FG090325AL\
Data File : FG016516.D
Signal(s) : FID1A.ch
Acq On : 03 Sep 2025 10:54
Operator : YP\AJ
Sample : Q2982-05DL 100X
Misc :
ALS Vial : 24 Sample Multiplier: 1

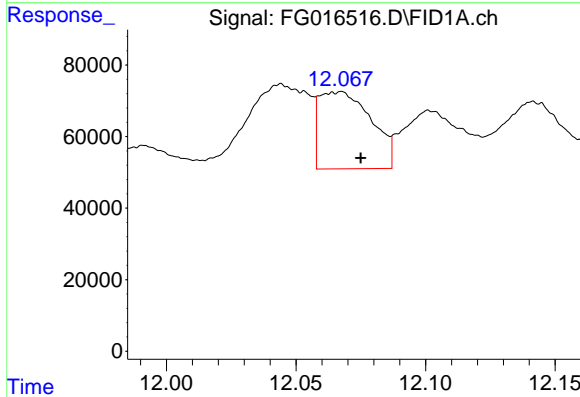
Integration File: autoint1.e
Quant Time: Sep 04 02:10:31 2025
Quant Method : Z:\pestpcbsrv\HPCHEM1\FID_G\Method\Aliphatic EPH 082825.M
Quant Title : GC Extractables
QLast Update : Thu Aug 28 12:01:28 2025
Response via : Initial Calibration
Integrator: ChemStation

Volume Inj. : 1 ul
Signal Phase : Rxi-1ms
Signal Info : 20M x 0.18mm x 0.18um

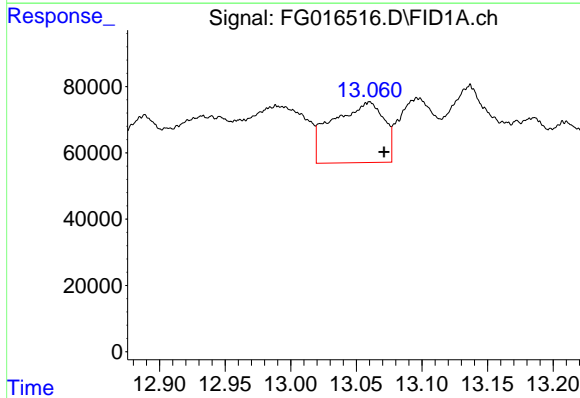




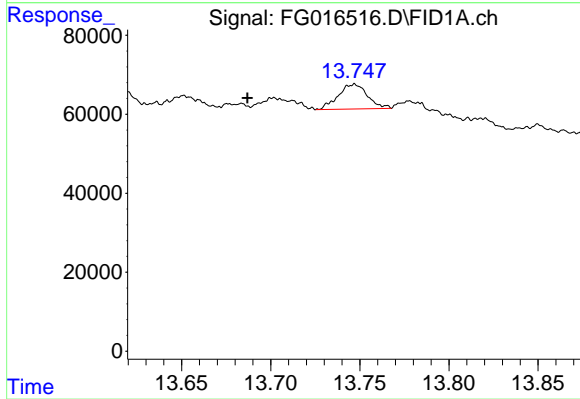
#8 n-Octadecane (C18)
 R.T.: 11.744 min
 Delta R.T.: -0.008 min
 Response: 115674
 Conc: 0.96 ug/ml



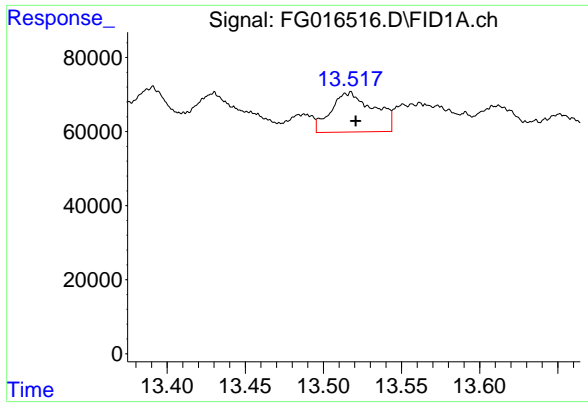
#9 ortho-Terphenyl (SURR)
 R.T.: 12.067 min
 Delta R.T.: -0.008 min
 Response: 302379
 Conc: 2.28 ug/ml



#10 n-Eicosane (C20)
 R.T.: 13.060 min
 Delta R.T.: -0.011 min
 Response: 496032
 Conc: 4.25 ug/ml



#11 n-Heneicosane (C21)
 R.T.: 13.747 min
 Delta R.T.: 0.060 min
 Response: 71587
 Conc: 0.62 ug/ml



#12 1-chlorooctadecane (SURR)

R.T.: 13.517 min
Delta R.T.: -0.004 min
Response: 204515
Conc: 2.03 ug/ml