

Data Path : Z:\pestpcbsrv\HPCHEM1\FID_G\Data\FG090325AL\
 Data File : FG016519.D
 Signal(s) : FID1A.ch
 Acq On : 03 Sep 2025 12:22
 Operator : YP\AJ
 Sample : Q2996-03DL 25X
 Misc :
 ALS Vial : 27 Sample Multiplier: 1

Integration File: autoint1.e
 Quant Time: Sep 04 02:11:39 2025
 Quant Method : Z:\pestpcbsrv\HPCHEM1\FID_G\Method\Aliphatic EPH 082825.M
 Quant Title : GC Extractables
 QLast Update : Thu Aug 28 12:01:28 2025
 Response via : Initial Calibration
 Integrator: ChemStation

Volume Inj. : 1 ul
 Signal Phase : Rxi-1ms
 Signal Info : 20M x 0.18mm x 0.18um

Compound	R.T.	Response	Conc Units

System Monitoring Compounds			
9) S ortho-Terphenyl (SURR)	12.068	345643	2.611 ug/ml
Spiked Amount	50.000	Recovery =	5.22%
12) S 1-chlorooctadecane (S...	13.514	233689	2.322 ug/ml
Spiked Amount	50.000	Recovery =	4.64%
Target Compounds			
18) T n-Dotriacontane (C32)	19.099	52794	0.502 ug/ml
19) T n-Tetratriacontane (C34)	19.891	52840	0.550 ug/ml

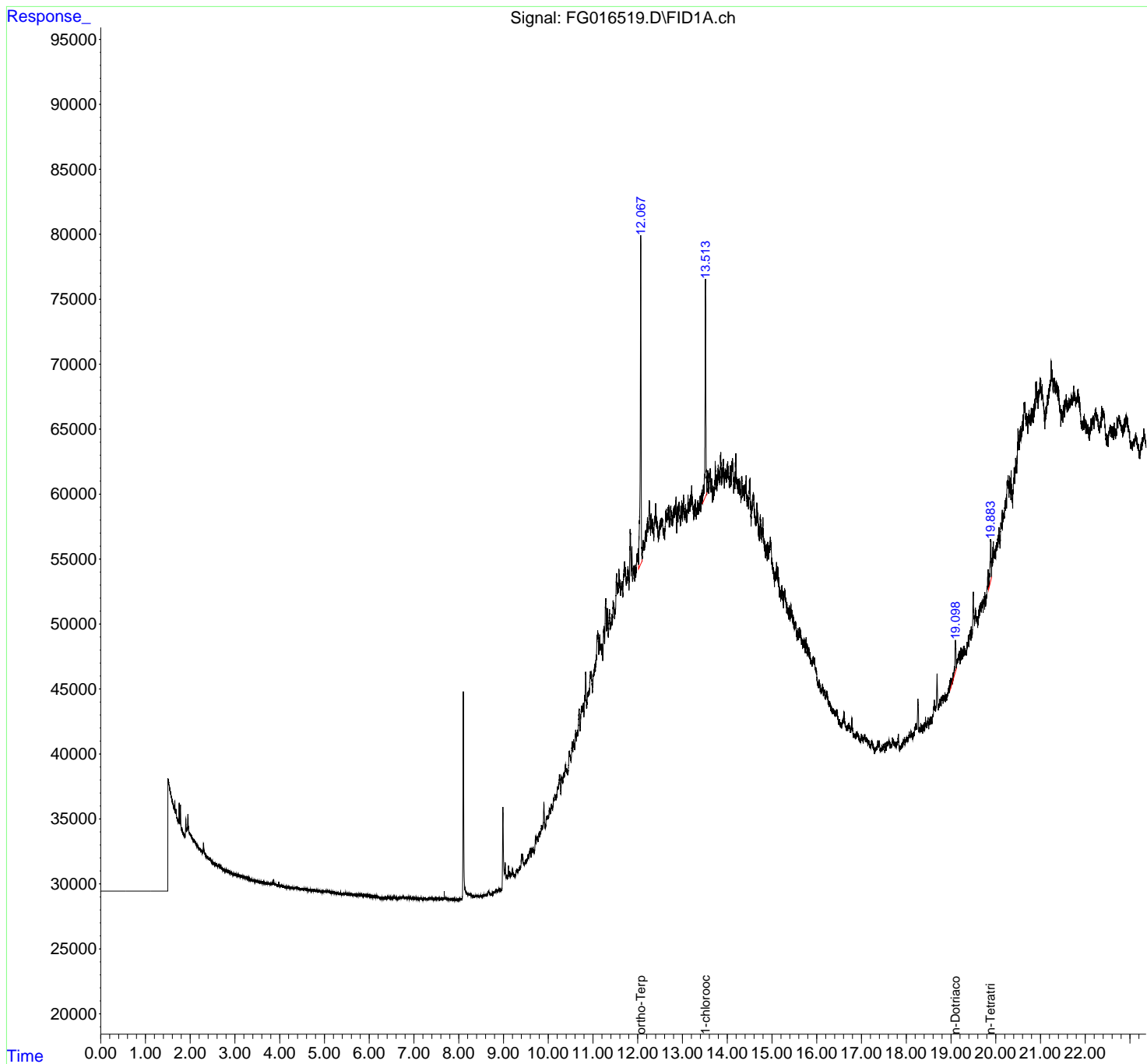
(f)=RT Delta > 1/2 Window

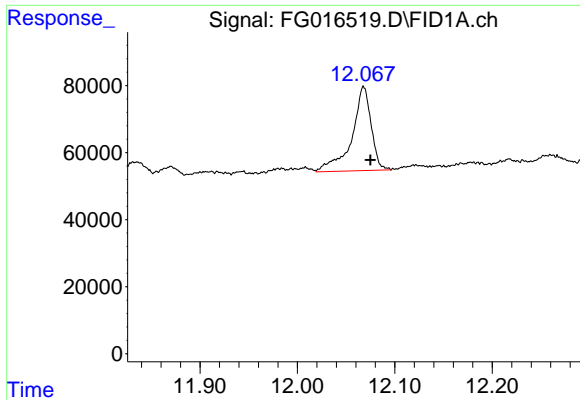
(m)=manual int.

Data Path : Z:\pestpcbsrv\HPCHEM1\FID_G\Data\FG090325AL\
Data File : FG016519.D
Signal(s) : FID1A.ch
Acq On : 03 Sep 2025 12:22
Operator : YP\AJ
Sample : Q2996-03DL 25X
Misc :
ALS Vial : 27 Sample Multiplier: 1

Integration File: autoint1.e
Quant Time: Sep 04 02:11:39 2025
Quant Method : Z:\pestpcbsrv\HPCHEM1\FID_G\Method\Aliphatic EPH 082825.M
Quant Title : GC Extractables
QLast Update : Thu Aug 28 12:01:28 2025
Response via : Initial Calibration
Integrator: ChemStation

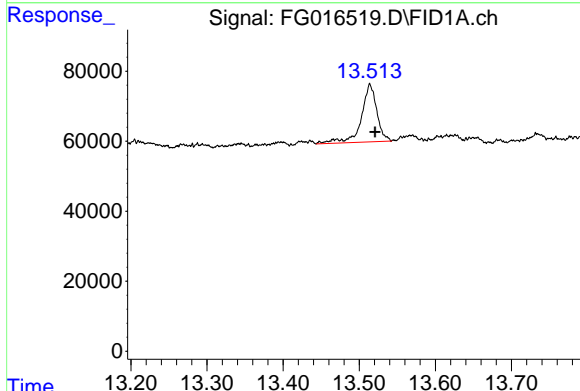
Volume Inj. : 1 ul
Signal Phase : Rxi-1ms
Signal Info : 20M x 0.18mm x 0.18um





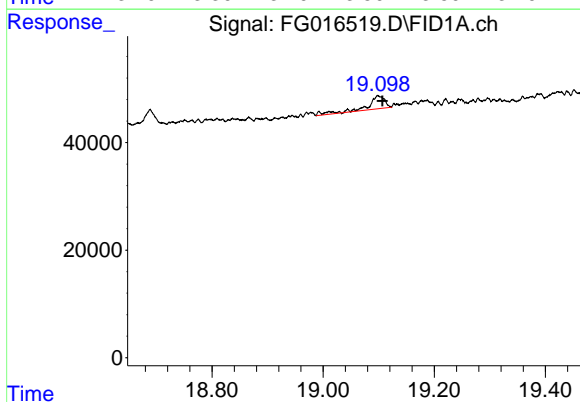
#9 ortho-Terphenyl (SURR)

R.T.: 12.068 min
 Delta R.T.: -0.007 min
 Response: 345643
 Conc: 2.61 ug/ml



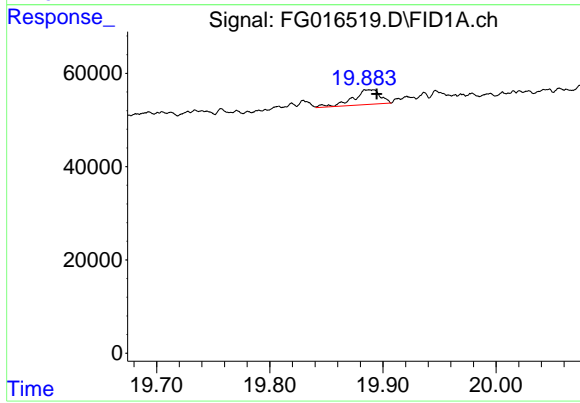
#12 1-chlorooctadecane (SURR)

R.T.: 13.514 min
 Delta R.T.: -0.007 min
 Response: 233689
 Conc: 2.32 ug/ml



#18 n-Dotriacontane (C32)

R.T.: 19.099 min
 Delta R.T.: -0.008 min
 Response: 52794
 Conc: 0.50 ug/ml



#19 n-Tetratriacontane (C34)

R.T.: 19.891 min
 Delta R.T.: -0.004 min
 Response: 52840
 Conc: 0.55 ug/ml