

Data Path : Z:\pestpcbsrv\HPCHEM1\FID_G\Data\FG090325AL\
 Data File : FG016520.D
 Signal(s) : FID1A.ch
 Acq On : 03 Sep 2025 12:52
 Operator : YP\AJ
 Sample : Q2996-05DL 5X
 Misc :
 ALS Vial : 28 Sample Multiplier: 1

Integration File: autoint1.e
 Quant Time: Sep 04 02:12:22 2025
 Quant Method : Z:\pestpcbsrv\HPCHEM1\FID_G\Method\Aliphatic EPH 082825.M
 Quant Title : GC Extractables
 QLast Update : Thu Aug 28 12:01:28 2025
 Response via : Initial Calibration
 Integrator: ChemStation

Volume Inj. : 1 ul
 Signal Phase : Rxi-1ms
 Signal Info : 20M x 0.18mm x 0.18um

Compound	R.T.	Response	Conc Units

System Monitoring Compounds			
9) S ortho-Terphenyl (SURR)	12.068	989752	7.476 ug/ml
Spiked Amount	50.000	Recovery	= 14.95%
12) S 1-chlorooctadecane (S...	13.514	781344	7.762 ug/ml
Spiked Amount	50.000	Recovery	= 15.52%
Target Compounds			
18) T n-Dotriacontane (C32)	19.099	51157	0.487 ug/ml

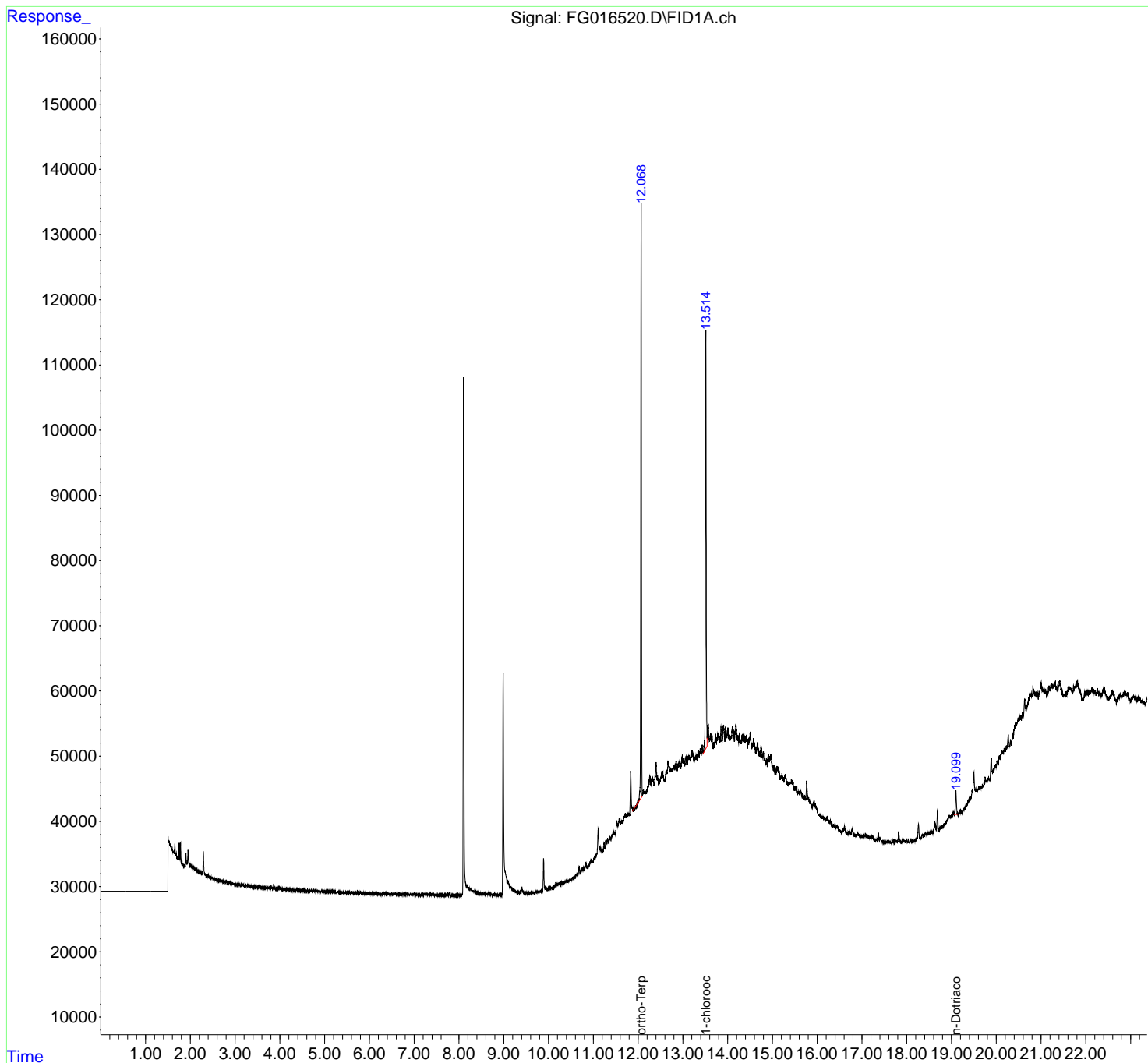
(f)=RT Delta > 1/2 Window

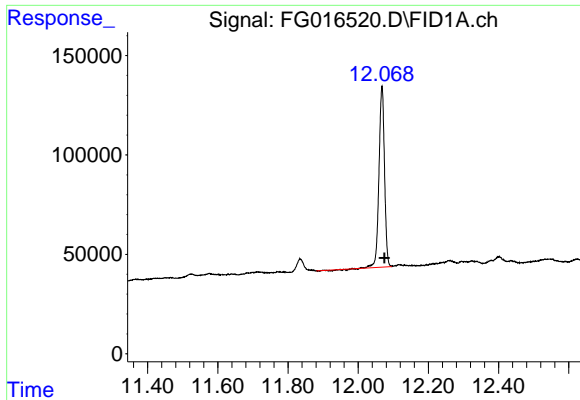
(m)=manual int.

Data Path : Z:\pestpcbsrv\HPCHEM1\FID_G\Data\FG090325AL\
Data File : FG016520.D
Signal(s) : FID1A.ch
Acq On : 03 Sep 2025 12:52
Operator : YP\AJ
Sample : Q2996-05DL 5X
Misc :
ALS Vial : 28 Sample Multiplier: 1

Integration File: autoint1.e
Quant Time: Sep 04 02:12:22 2025
Quant Method : Z:\pestpcbsrv\HPCHEM1\FID_G\Method\Aliphatic EPH 082825.M
Quant Title : GC Extractables
QLast Update : Thu Aug 28 12:01:28 2025
Response via : Initial Calibration
Integrator: ChemStation

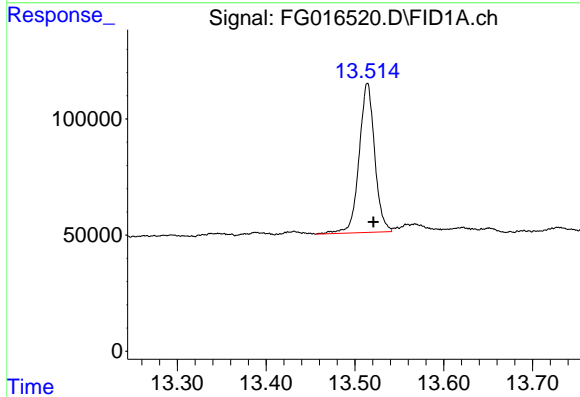
Volume Inj. : 1 ul
Signal Phase : Rxi-1ms
Signal Info : 20M x 0.18mm x 0.18um





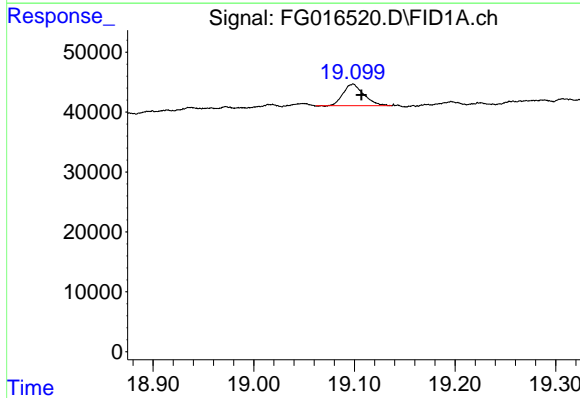
#9 ortho-Terphenyl (SURR)

R.T.: 12.068 min
Delta R.T.: -0.007 min
Response: 989752
Conc: 7.48 ug/ml



#12 1-chlorooctadecane (SURR)

R.T.: 13.514 min
Delta R.T.: -0.007 min
Response: 781344
Conc: 7.76 ug/ml



#18 n-Dotriacontane (C32)

R.T.: 19.099 min
Delta R.T.: -0.008 min
Response: 51157
Conc: 0.49 ug/ml