

Data Path : Z:\pestpcbsrv\HPCHEM1\FID\_G\Data\FG090325AR\  
 Data File : FG016528.D  
 Signal(s) : FID1A.ch  
 Acq On : 03 Sep 2025 18:40  
 Operator : YP\AJ  
 Sample : PB169427BL  
 Misc :  
 ALS Vial : 62 Sample Multiplier: 1

Integration File: autoint1.e  
 Quant Time: Sep 04 02:49:30 2025  
 Quant Method : Z:\pestpcbsrv\HPCHEM1\FID\_G\Method\Aromatic EPH 082825.M  
 Quant Title : GC Extractables  
 QLast Update : Fri Aug 29 05:03:16 2025  
 Response via : Initial Calibration  
 Integrator: ChemStation

Volume Inj. : 1 µl  
 Signal Phase : Rxi-1ms  
 Signal Info : 20M x 0.18mm x 0.18µm

Compound	R.T.	Response	Conc Units
-----			
System Monitoring Compounds			
4) S 2-Bromonaphthalene (S...	8.104	6740956	59.737 ug/ml
Spiked Amount 50.000		Recovery =	119.47%
6) S 2-Fluorobiphenyl (SURR)	8.987	4492097	57.570 ug/ml
Spiked Amount 50.000 Range 0 - 131		Recovery =	115.14%
11) S ortho-Terphenyl (SURR)	12.071	7485796	56.202 ug/ml
Spiked Amount 50.000		Recovery =	112.40%
Target Compounds			
2) T Naphthalene (C11.7)	6.373	13248	0.102 ug/ml
3) T 2-Methylnaphthalene (...)	7.474	14997	0.114 ug/ml
8) T Fluorene (C16.55)	9.875	7795	0.060 ug/ml
13) T Pyrene (C20.8)	13.513f	1414569	10.891 ug/ml
14) T Benzo[a]anthracene (C...	15.341	11780	0.092 ug/ml
15) T Chrysene (C27.41)	15.384	21953	0.170 ug/ml
16) T benzo[b]fluoranthene ...	16.900	11311	0.088 ug/ml
17) T Bnezo[k]fluoranthene ...	16.949	8220	0.068 ug/ml
18) T Benzo[a]pyrene (C31.34)	17.332	12938	0.104 ug/ml
19) T Indeno[1,2,3-cd]pyren...	18.687	114036	0.991 ug/ml
20) T Dibenz[a,h]anthracene...	18.687	114036	0.944 ug/ml
21) T Benzo[g,h,i]perylene ...	18.945	18022	0.151 ug/ml
-----			

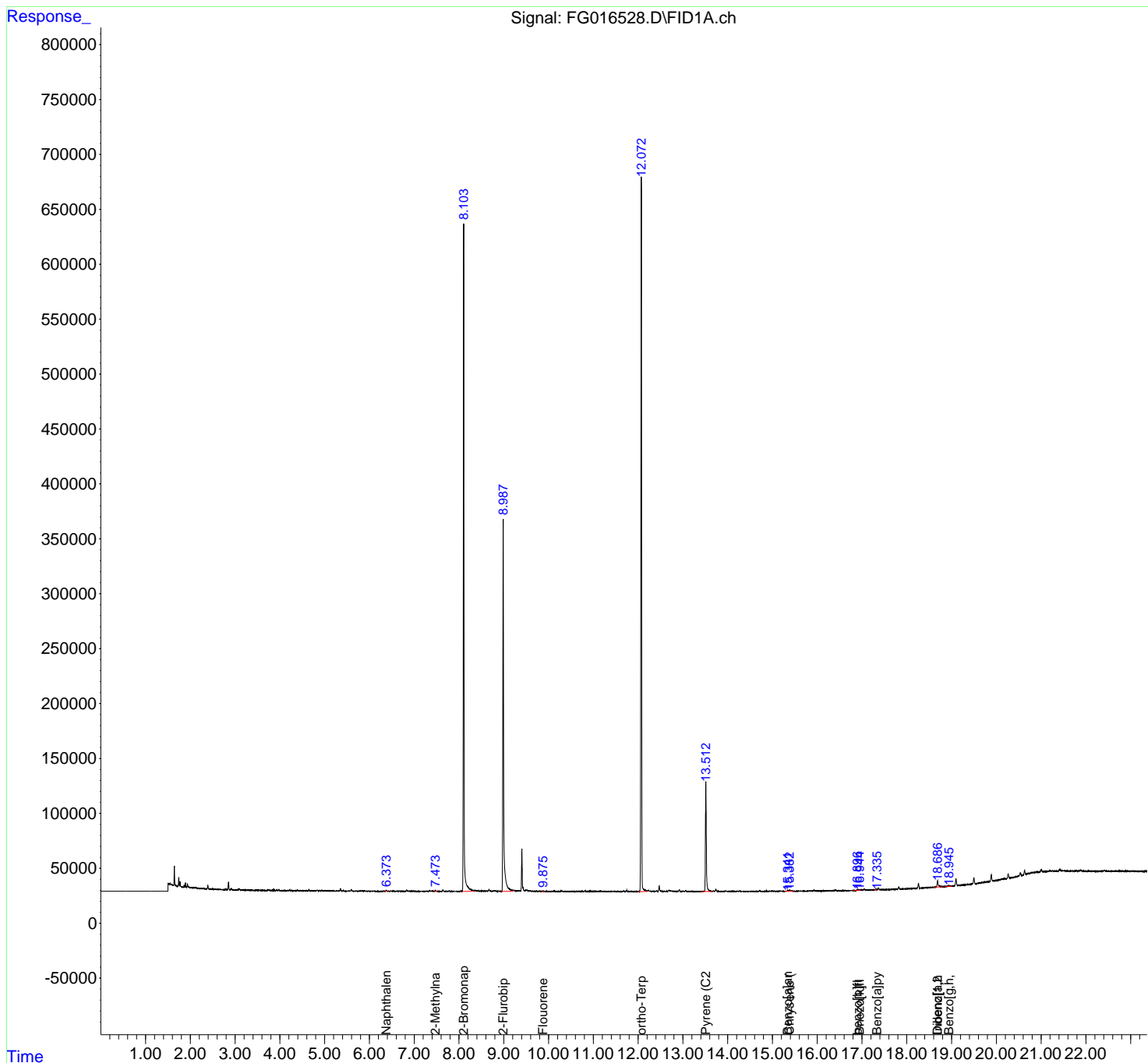
(f)=RT Delta > 1/2 Window

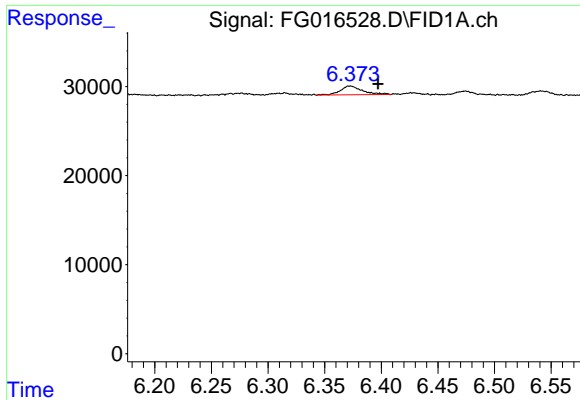
(m)=manual int.

Data Path : Z:\pestpcbsrv\HPCHEM1\FID\_G\Data\FG090325AR\  
 Data File : FG016528.D  
 Signal(s) : FID1A.ch  
 Acq On : 03 Sep 2025 18:40  
 Operator : YP\AJ  
 Sample : PB169427BL  
 Misc :  
 ALS Vial : 62 Sample Multiplier: 1

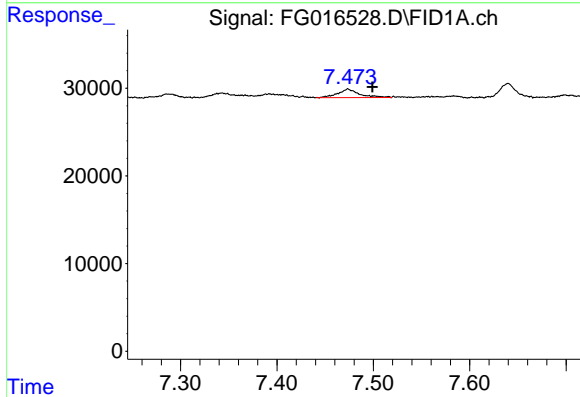
Integration File: autoint1.e  
 Quant Time: Sep 04 02:49:30 2025  
 Quant Method : Z:\pestpcbsrv\HPCHEM1\FID\_G\Method\Aromatic EPH 082825.M  
 Quant Title : GC Extractables  
 QLast Update : Fri Aug 29 05:03:16 2025  
 Response via : Initial Calibration  
 Integrator: ChemStation

Volume Inj. : 1 µl  
 Signal Phase : Rxi-1ms  
 Signal Info : 20M x 0.18mm x 0.18µm

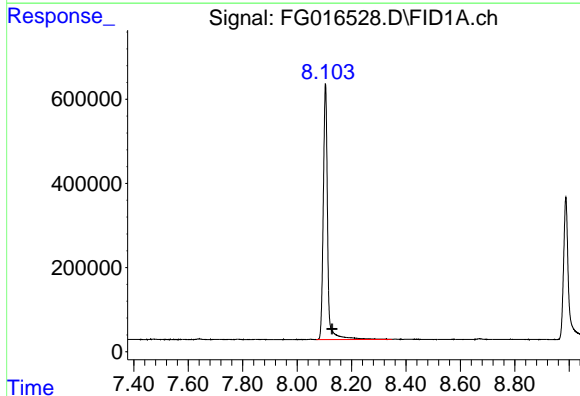




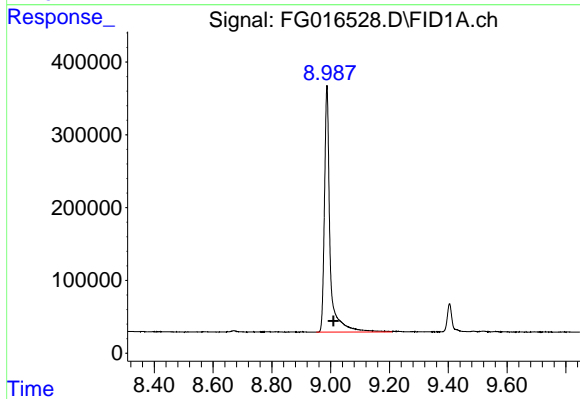
#2 Naphthalene (C11.7)  
R.T.: 6.373 min  
Delta R.T.: -0.025 min  
Response: 13248  
Conc: 0.10 ug/ml



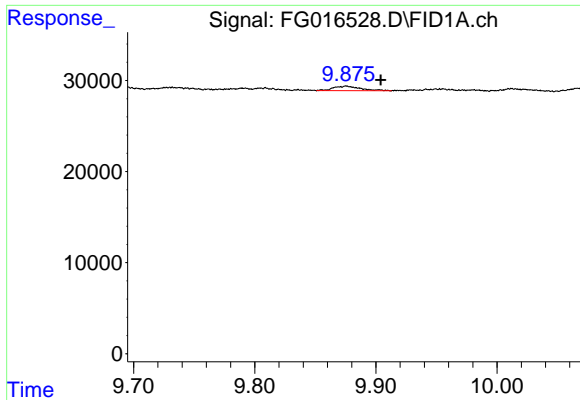
#3 2-Methylnaphthalene (C12.89)  
R.T.: 7.474 min  
Delta R.T.: -0.025 min  
Response: 14997  
Conc: 0.11 ug/ml



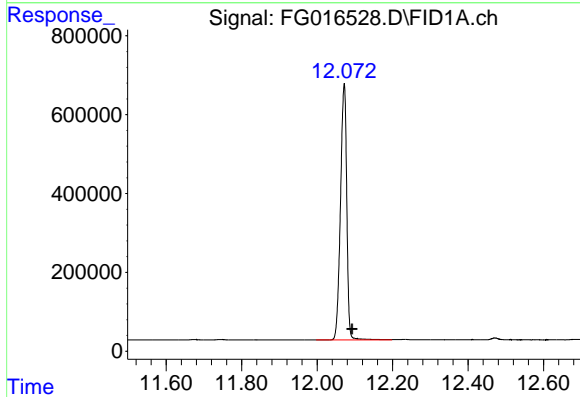
#4 2-Bromonaphthalene (SURR)  
R.T.: 8.104 min  
Delta R.T.: -0.024 min  
Response: 6740956  
Conc: 59.74 ug/ml



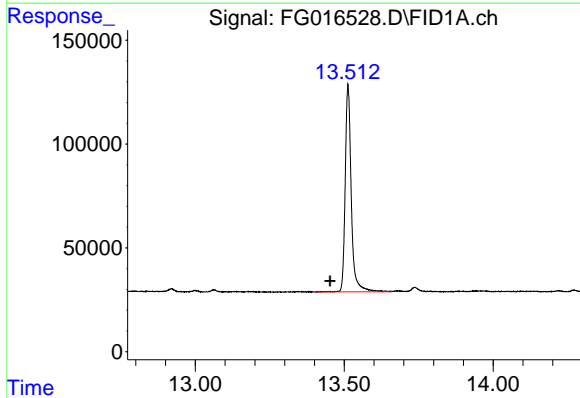
#6 2-Fluorobiphenyl (SURR)  
R.T.: 8.987 min  
Delta R.T.: -0.022 min  
Response: 4492097  
Conc: 57.57 ug/ml



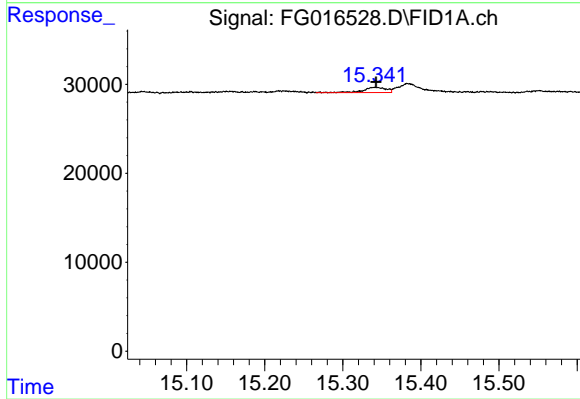
#8 Flouorene (C16.55)  
 R.T.: 9.875 min  
 Delta R.T.: -0.029 min  
 Response: 7795  
 Conc: 0.06 ug/ml



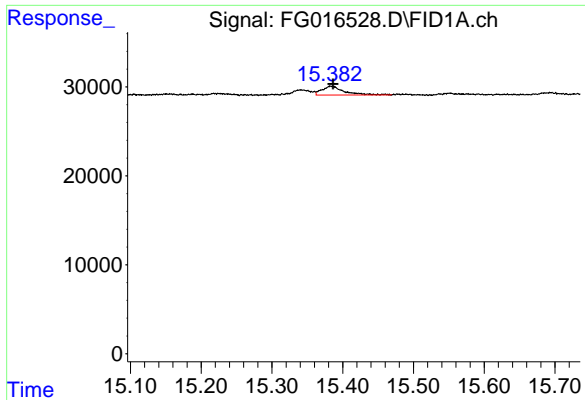
#11 ortho-Terphenyl (SURR)  
 R.T.: 12.071 min  
 Delta R.T.: -0.021 min  
 Response: 7485796  
 Conc: 56.20 ug/ml



#13 Pyrene (C20.8)  
 R.T.: 13.513 min  
 Delta R.T.: 0.060 min  
 Response: 1414569  
 Conc: 10.89 ug/ml

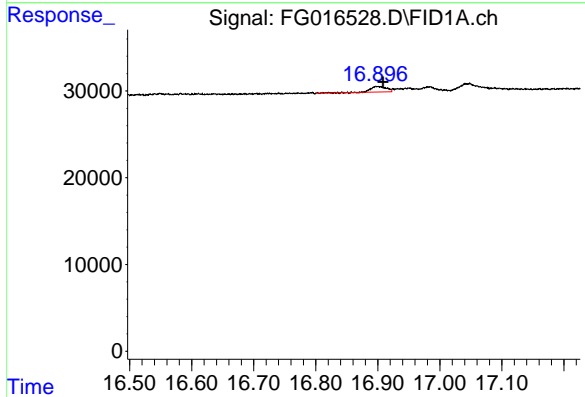


#14 Benzo[a]anthracene (C26.37)  
 R.T.: 15.341 min  
 Delta R.T.: -0.001 min  
 Response: 11780  
 Conc: 0.09 ug/ml



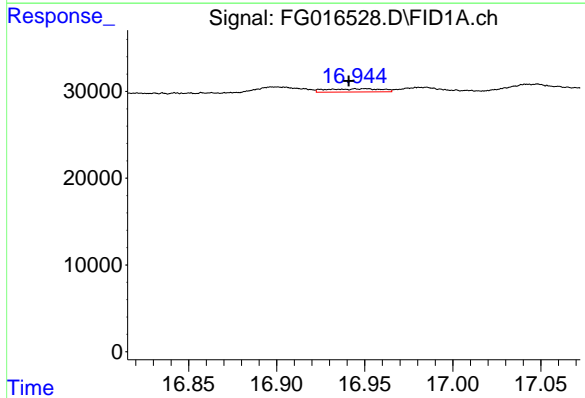
#15 Chrysene (C27.41)

R.T.: 15.384 min  
Delta R.T.: -0.003 min  
Response: 21953  
Conc: 0.17 ug/ml



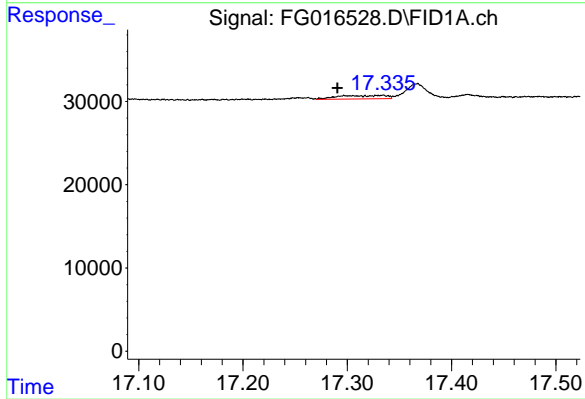
#16 benzo[b]fluoranthene (C30.41)

R.T.: 16.900 min  
Delta R.T.: -0.008 min  
Response: 11311  
Conc: 0.09 ug/ml



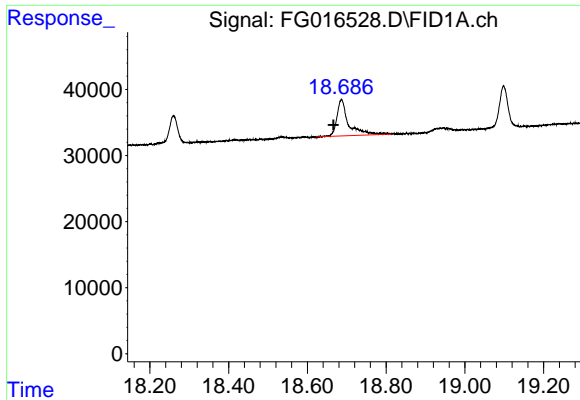
#17 Bnezo[k]fluoranthene (C30.14)

R.T.: 16.949 min  
Delta R.T.: 0.009 min  
Response: 8220  
Conc: 0.07 ug/ml



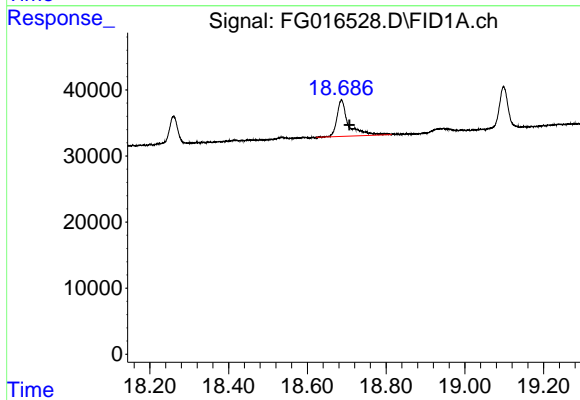
#18 Benzo[a]pyrene (C31.34)

R.T.: 17.332 min  
Delta R.T.: 0.042 min  
Response: 12938  
Conc: 0.10 ug/ml



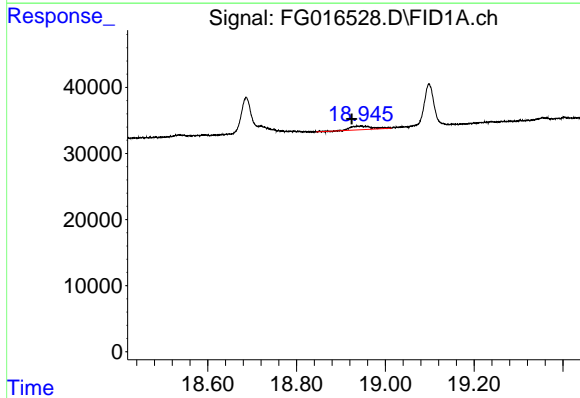
#19 Indeno[1,2,3-cd]pyrene (C35.01)

R.T.: 18.687 min  
Delta R.T.: 0.020 min  
Response: 114036  
Conc: 0.99 ug/ml



#20 Dibenz[a,h]anthracene (C30.36)

R.T.: 18.687 min  
Delta R.T.: -0.021 min  
Response: 114036  
Conc: 0.94 ug/ml



#21 Benzo[g,h,i]perylene (C34.01)

R.T.: 18.945 min  
Delta R.T.: 0.021 min  
Response: 18022  
Conc: 0.15 ug/ml