

Data Path : Z:\pestpcbsrv\HPCHEM1\FID_G\Data\FG090325AR\
 Data File : FG016535.D
 Signal(s) : FID1A.ch
 Acq On : 03 Sep 2025 22:07
 Operator : YP\AJ
 Sample : I.BLK
 Misc :
 ALS Vial : 1 Sample Multiplier: 1

Integration File: autoint1.e
 Quant Time: Sep 04 02:52:56 2025
 Quant Method : Z:\pestpcbsrv\HPCHEM1\FID_G\Method\Aromatic EPH 082825.M
 Quant Title : GC Extractables
 QLast Update : Fri Aug 29 05:03:16 2025
 Response via : Initial Calibration
 Integrator: ChemStation

Volume Inj. : 1 µl
 Signal Phase : Rxi-1ms
 Signal Info : 20M x 0.18mm x 0.18µm

Compound	R.T.	Response	Conc Units

System Monitoring Compounds			
Target Compounds			
14) T Benzo[a]anthracene (C...	15.380	19244	0.150 ug/ml
15) T Chrysene (C27.41)	15.380	19244	0.149 ug/ml
16) T benzo[b]fluoranthene ...	16.906	1968	0.015 ug/ml
17) T Bnezo[k]fluoranthene ...	16.906	1968	0.016 ug/ml
19) T Indeno[1,2,3-cd]pyren...	18.689	24693	0.215 ug/ml
20) T Dibenz[a,h]anthracene...	18.689	24693	0.204 ug/ml

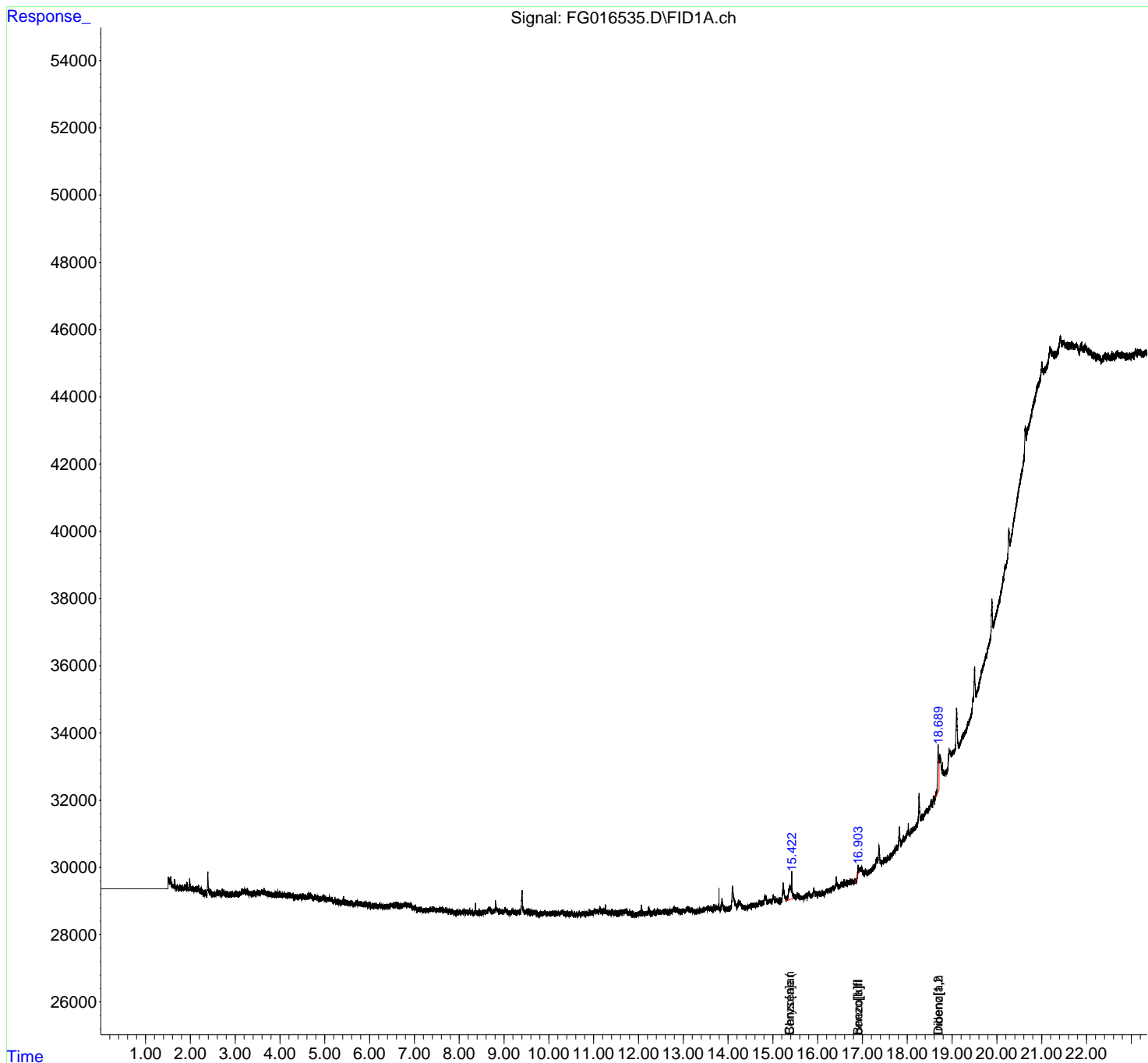
(f)=RT Delta > 1/2 Window

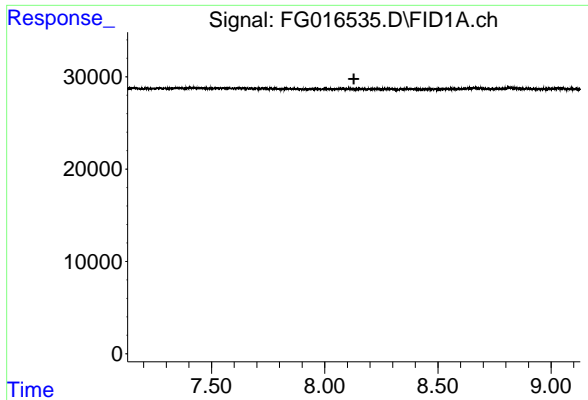
(m)=manual int.

Data Path : Z:\pestpcbsrv\HPCHEM1\FID_G\Data\FG090325AR\
 Data File : FG016535.D
 Signal(s) : FID1A.ch
 Acq On : 03 Sep 2025 22:07
 Operator : YP\AJ
 Sample : I.BLK
 Misc :
 ALS Vial : 1 Sample Multiplier: 1

Integration File: autoint1.e
 Quant Time: Sep 04 02:52:56 2025
 Quant Method : Z:\pestpcbsrv\HPCHEM1\FID_G\Method\Aromatic EPH 082825.M
 Quant Title : GC Extractables
 QLast Update : Fri Aug 29 05:03:16 2025
 Response via : Initial Calibration
 Integrator: ChemStation

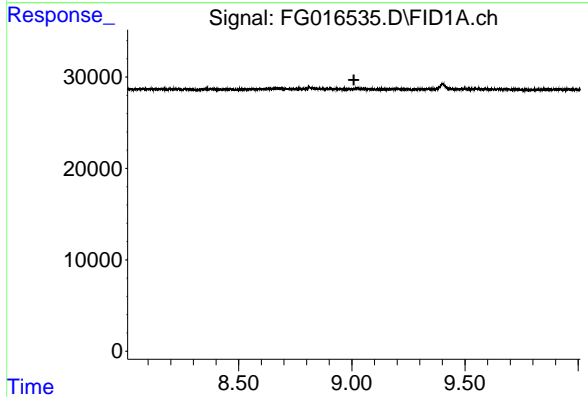
Volume Inj. : 1 µl
 Signal Phase : Rxi-1ms
 Signal Info : 20M x 0.18mm x 0.18µm





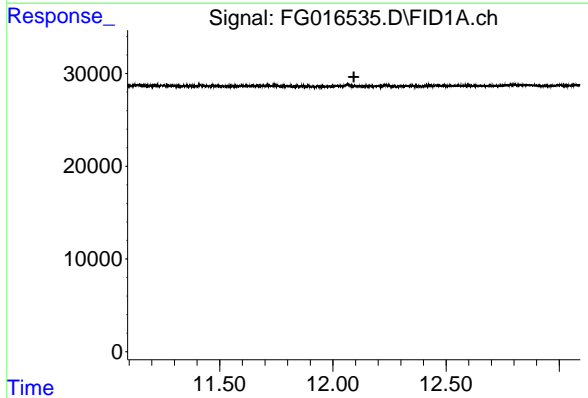
#4 2-Bromonaphthalene (SURRE)

R.T.: 0.000 min
Exp R.T. : 8.129 min
Response: 0
Conc: N.D.



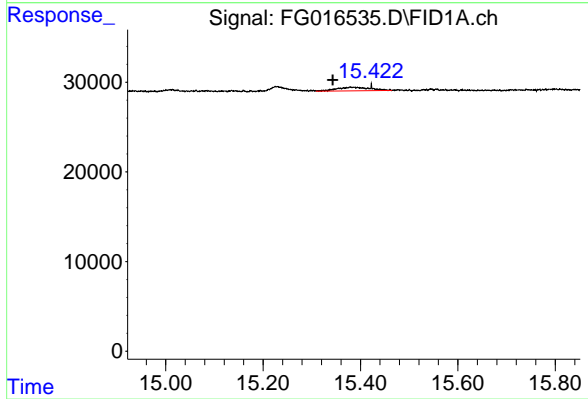
#6 2-Fluorobiphenyl (SURRE)

R.T.: 0.000 min
Exp R.T. : 9.009 min
Response: 0
Conc: N.D.



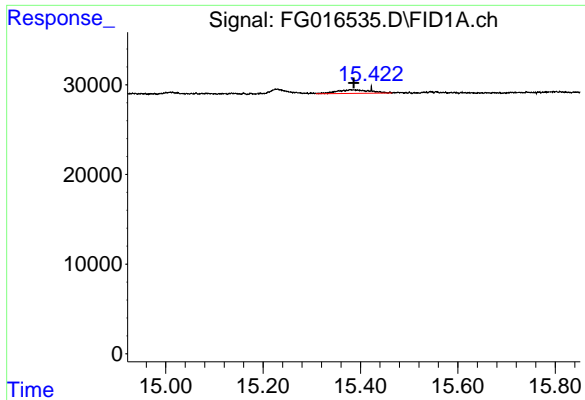
#11 ortho-Terphenyl (SURRE)

R.T.: 0.000 min
Exp R.T. : 12.093 min
Response: 0
Conc: N.D.



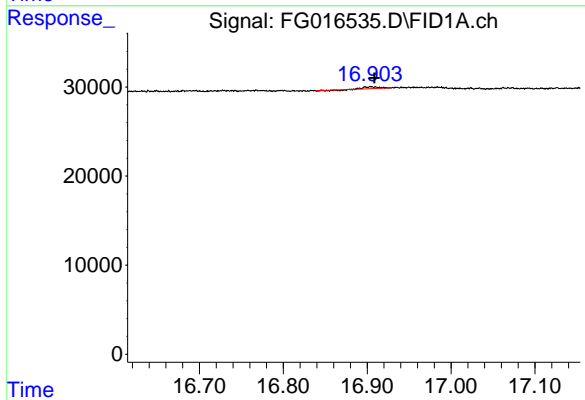
#14 Benzo[a]anthracene (C26.37)

R.T.: 15.380 min
Delta R.T.: 0.038 min
Response: 19244
Conc: 0.15 ug/ml



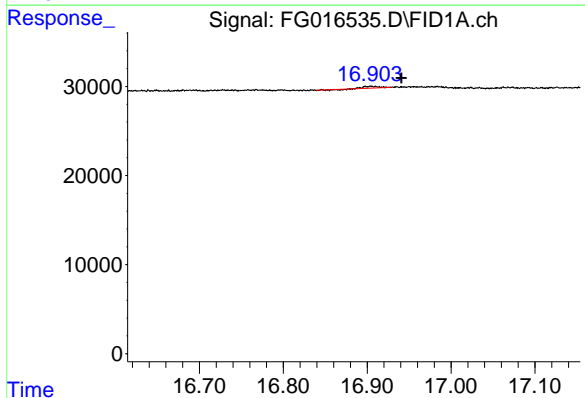
#15 Chrysene (C27.41)

R.T.: 15.380 min
Delta R.T.: -0.006 min
Response: 19244
Conc: 0.15 ug/ml



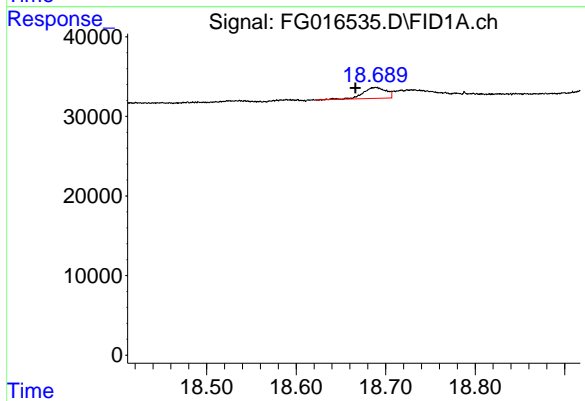
#16 benzo[b]fluoranthene (C30.41)

R.T.: 16.906 min
Delta R.T.: -0.003 min
Response: 1968
Conc: 0.02 ug/ml



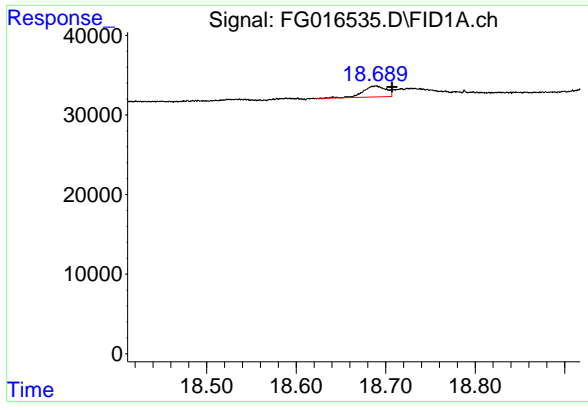
#17 Bnezo[k]fluoranthene (C30.14)

R.T.: 16.906 min
Delta R.T.: -0.035 min
Response: 1968
Conc: 0.02 ug/ml



#19 Indeno[1,2,3-cd]pyrene (C35.01)

R.T.: 18.689 min
Delta R.T.: 0.022 min
Response: 24693
Conc: 0.21 ug/ml



#20 Dibenz[a,h]anthracene (C30.36)

R.T.: 18.689 min
Delta R.T.: -0.019 min
Response: 24693
Conc: 0.20 ug/ml