

Data Path : Z:\pestpcbsrv\HPCHEM1\FID_G\Data\FG090325AR\
 Data File : FG016536.D
 Signal(s) : FID1A.ch
 Acq On : 03 Sep 2025 22:37
 Operator : YP\AJ
 Sample : 20 PPM AROMATIC HC STD
 Misc :
 ALS Vial : 31 Sample Multiplier: 1

Integration File: autoint1.e
 Quant Time: Sep 04 02:53:21 2025
 Quant Method : Z:\pestpcbsrv\HPCHEM1\FID_G\Method\Aromatic EPH 082825.M
 Quant Title : GC Extractables
 QLast Update : Fri Aug 29 05:03:16 2025
 Response via : Initial Calibration
 Integrator: ChemStation

Volume Inj. : 1 µl
 Signal Phase : Rxi-1ms
 Signal Info : 20M x 0.18mm x 0.18µm

Compound	R.T.	Response	Conc Units

System Monitoring Compounds			
4) S 2-Bromonaphthalene (S...	8.101	2296332	20.350 ug/ml
Spiked Amount 50.000		Recovery =	40.70%
6) S 2-Fluorobiphenyl (SURR)	8.985	1519215	19.470 ug/ml
Spiked Amount 50.000 Range 0 - 131		Recovery =	38.94%
11) S ortho-Terphenyl (SURR)	12.066	2663475	19.997 ug/ml
Spiked Amount 50.000		Recovery =	39.99%
Target Compounds			
1) T 1,2,3-Trimethylbenzen...	4.686	2602990	21.242 ug/ml
2) T Naphthalene (C11.7)	6.368	2651468	20.448 ug/ml
3) T 2-Methylnaphthalene (...)	7.471	2505502	18.968 ug/ml
5) T Acenaphthylene (C15.06)	8.783	2549585	19.482 ug/ml
7) T Acenaphthene (C15.5)	9.084	2594707	19.907 ug/ml
8) T Flouorene (C16.55)	9.879	2575056	19.730 ug/ml
9) T Phenanthrene (C19.36)	11.296	2472941	18.952 ug/ml
10) T Anthracene (C19.43)	11.371	2334188	17.863 ug/ml
12) T Fluoranthene (C21.85)	13.130	2538934	19.358 ug/ml
13) T Pyrene (C20.8)	13.431	2499806	19.247 ug/ml
14) T Benzo[a]anthracene (C...	15.324	2256832	17.630 ug/ml
15) T Chrysene (C27.41)	15.367	2436895	18.888 ug/ml
16) T benzo[b]fluoranthene ...	16.894	2257488	17.629 ug/ml
17) T Bnezo[k]fluoranthene ...	16.926	2462410	20.494 ug/ml
18) T Benzo[a]pyrene (C31.34)	17.278	2191644	17.589 ug/ml
19) T Indeno[1,2,3-cd]pyren...	18.659	1760429	15.304 ug/ml
20) T Dibenz[a,h]anthracene...	18.698	2574546	21.319 ug/ml
21) T Benzo[g,h,i]perylene ...	18.916	2320776	19.433 ug/ml

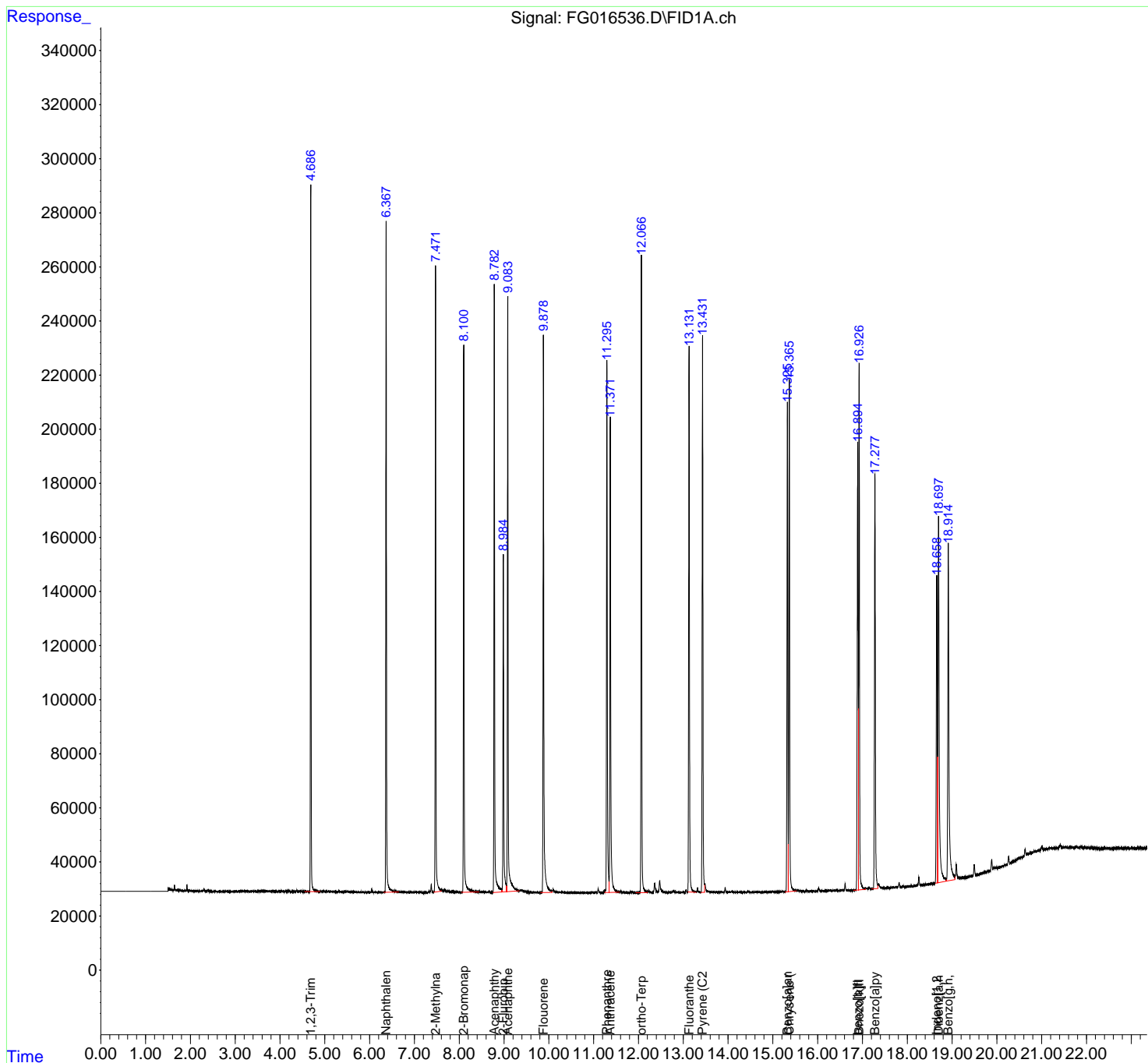
(f)=RT Delta > 1/2 Window

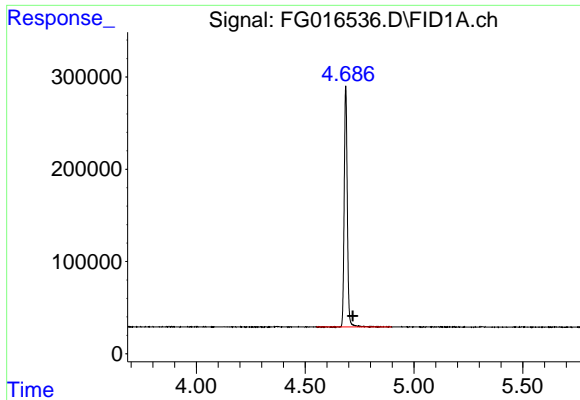
(m)=manual int.

Data Path : Z:\pestpcbsrv\HPCHEM1\FID_G\Data\FG090325AR\
 Data File : FG016536.D
 Signal(s) : FID1A.ch
 Acq On : 03 Sep 2025 22:37
 Operator : YP\AJ
 Sample : 20 PPM AROMATIC HC STD
 Misc :
 ALS Vial : 31 Sample Multiplier: 1

Integration File: autoint1.e
 Quant Time: Sep 04 02:53:21 2025
 Quant Method : Z:\pestpcbsrv\HPCHEM1\FID_G\Method\Aromatic EPH 082825.M
 Quant Title : GC Extractables
 QLast Update : Fri Aug 29 05:03:16 2025
 Response via : Initial Calibration
 Integrator: ChemStation

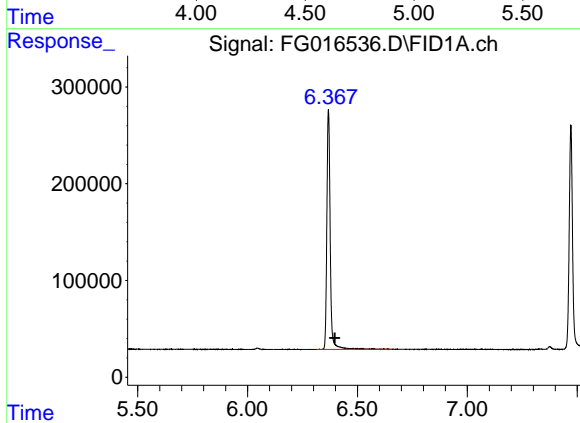
Volume Inj. : 1 µl
 Signal Phase : Rxi-1ms
 Signal Info : 20M x 0.18mm x 0.18µm





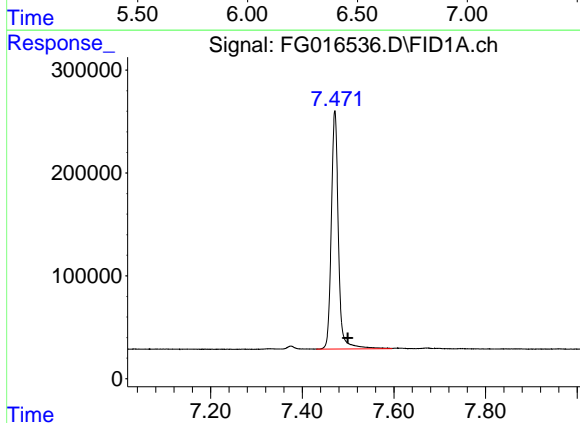
#1 1,2,3-Trimethylbenzene (C10.1)

R.T.: 4.686 min
Delta R.T.: -0.033 min
Response: 2602990
Conc: 21.24 ug/ml



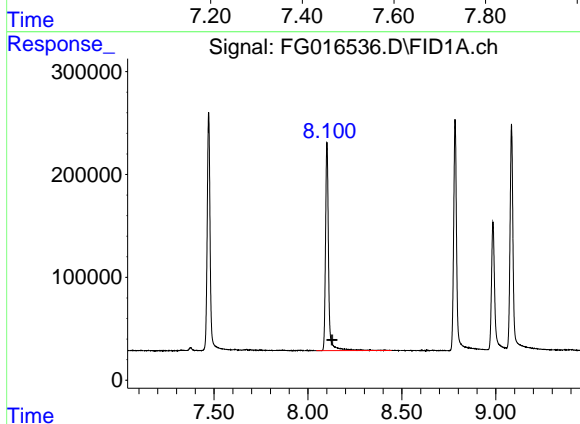
#2 Naphthalene (C11.7)

R.T.: 6.368 min
Delta R.T.: -0.029 min
Response: 2651468
Conc: 20.45 ug/ml



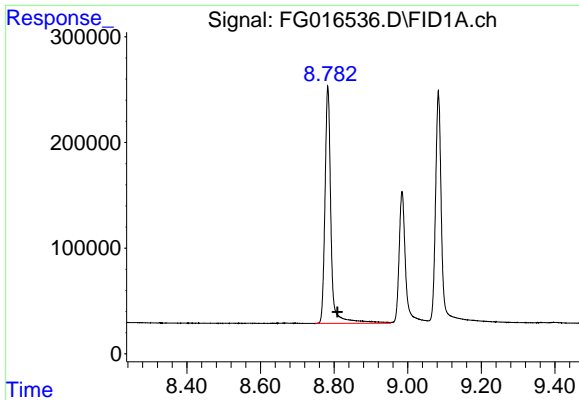
#3 2-Methylnaphthalene (C12.89)

R.T.: 7.471 min
Delta R.T.: -0.028 min
Response: 2505502
Conc: 18.97 ug/ml

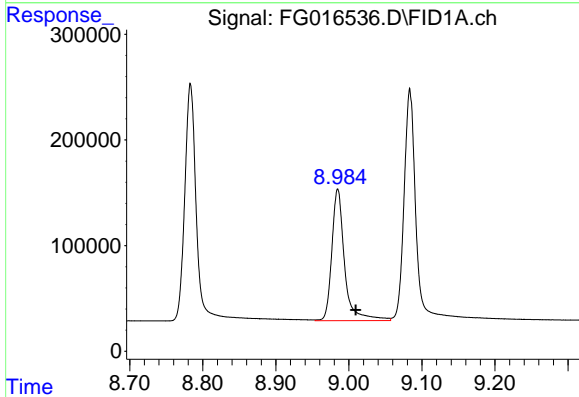


#4 2-Bromonaphthalene (SURR)

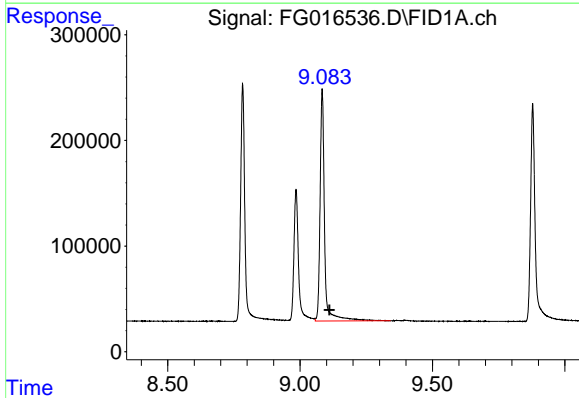
R.T.: 8.101 min
Delta R.T.: -0.028 min
Response: 2296332
Conc: 20.35 ug/ml



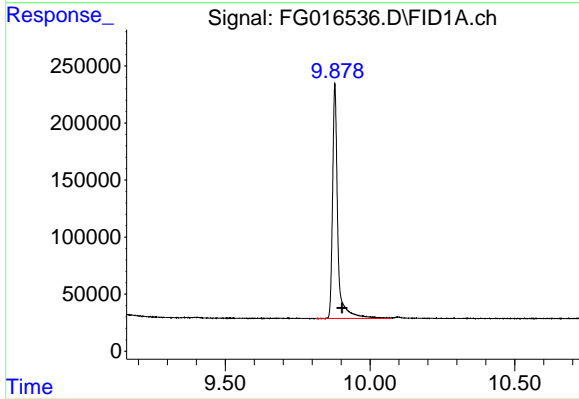
#5 Acenaphthylene (C15.06)
 R.T.: 8.783 min
 Delta R.T.: -0.026 min
 Response: 2549585
 Conc: 19.48 ug/ml



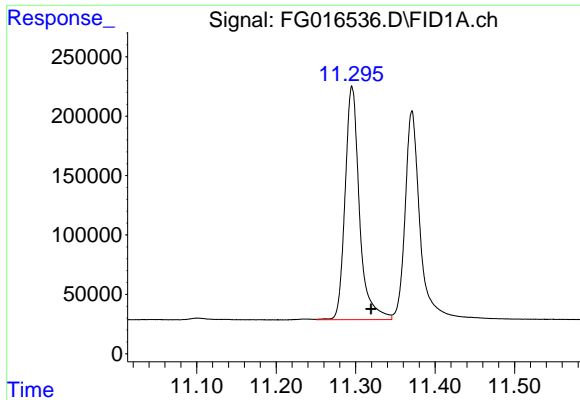
#6 2-Fluorobiphenyl (SURRE)
 R.T.: 8.985 min
 Delta R.T.: -0.025 min
 Response: 1519215
 Conc: 19.47 ug/ml



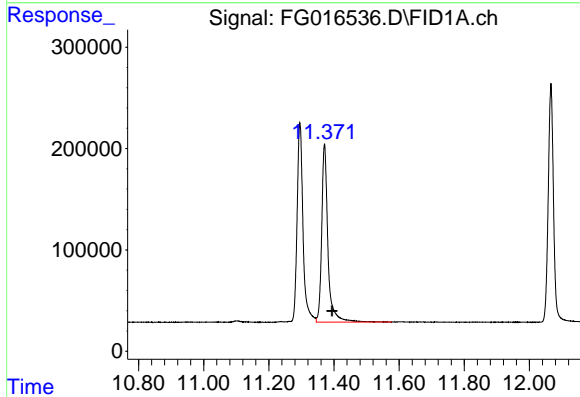
#7 Acenaphthene (C15.5)
 R.T.: 9.084 min
 Delta R.T.: -0.027 min
 Response: 2594707
 Conc: 19.91 ug/ml



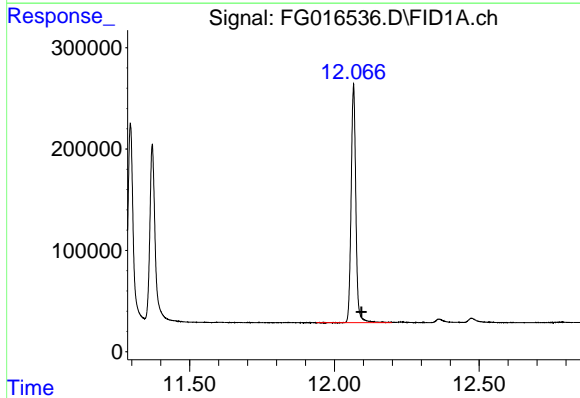
#8 Fluorene (C16.55)
 R.T.: 9.879 min
 Delta R.T.: -0.025 min
 Response: 2575056
 Conc: 19.73 ug/ml



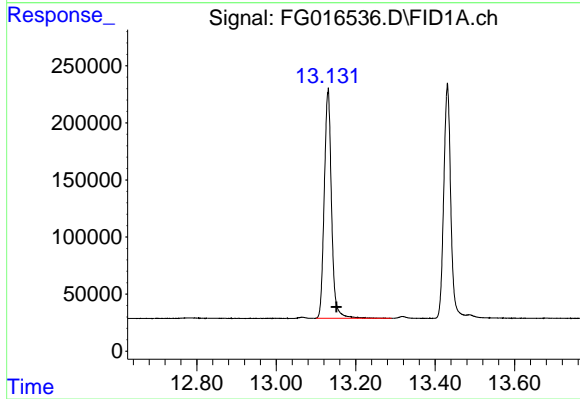
#9 Phenanthrene (C19.36)
R.T.: 11.296 min
Delta R.T.: -0.024 min
Response: 2472941
Conc: 18.95 ug/ml



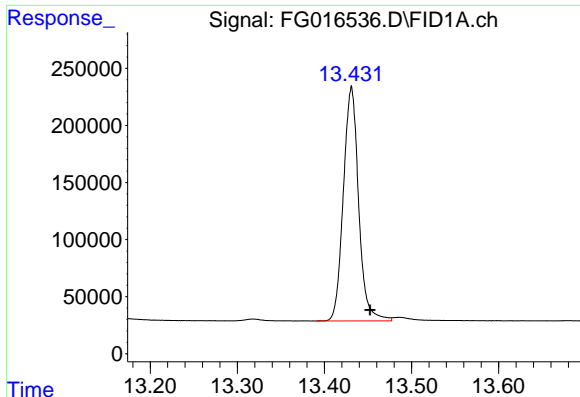
#10 Anthracene (C19.43)
R.T.: 11.371 min
Delta R.T.: -0.023 min
Response: 2334188
Conc: 17.86 ug/ml



#11 ortho-Terphenyl (SURR)
R.T.: 12.066 min
Delta R.T.: -0.027 min
Response: 2663475
Conc: 20.00 ug/ml

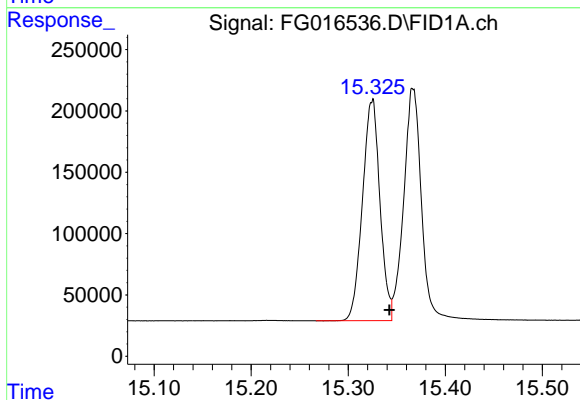


#12 Fluoranthene (C21.85)
R.T.: 13.130 min
Delta R.T.: -0.021 min
Response: 2538934
Conc: 19.36 ug/ml



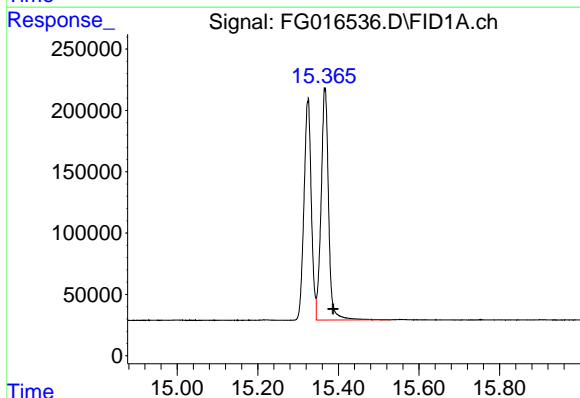
#13 Pyrene (C20.8)

R.T.: 13.431 min
Delta R.T.: -0.021 min
Response: 2499806
Conc: 19.25 ug/ml



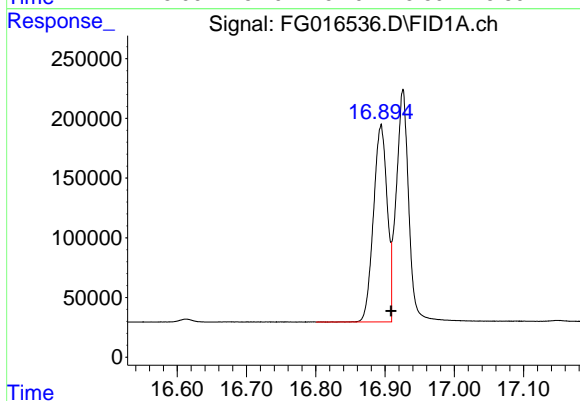
#14 Benzo[a]anthracene (C26.37)

R.T.: 15.324 min
Delta R.T.: -0.018 min
Response: 2256832
Conc: 17.63 ug/ml



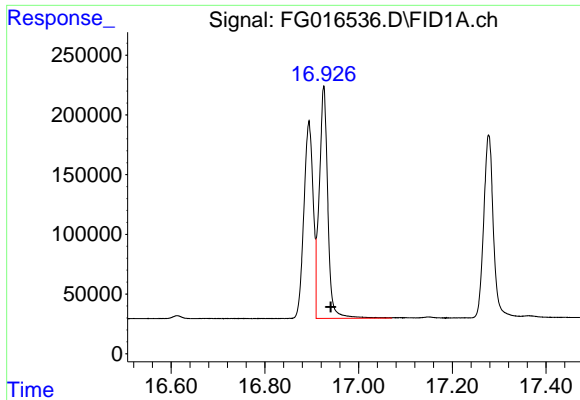
#15 Chrysene (C27.41)

R.T.: 15.367 min
Delta R.T.: -0.020 min
Response: 2436895
Conc: 18.89 ug/ml



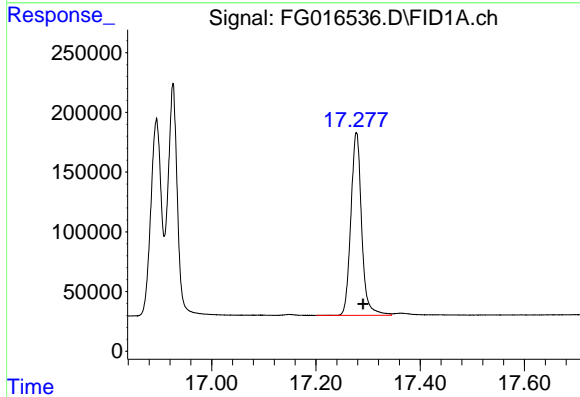
#16 benzo[b]fluoranthene (C30.41)

R.T.: 16.894 min
Delta R.T.: -0.014 min
Response: 2257488
Conc: 17.63 ug/ml



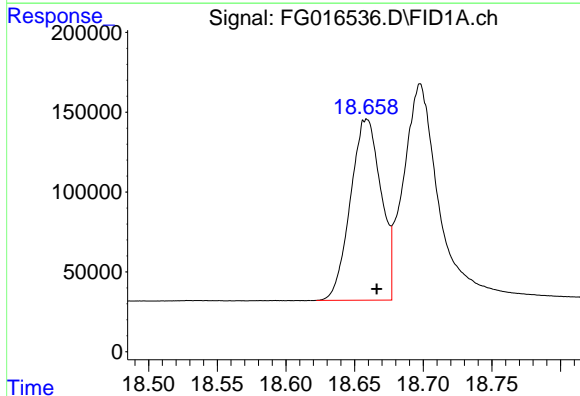
#17 Bnezo[k]fluoranthene (C30.14)

R.T.: 16.926 min
Delta R.T.: -0.015 min
Response: 2462410
Conc: 20.49 ug/ml



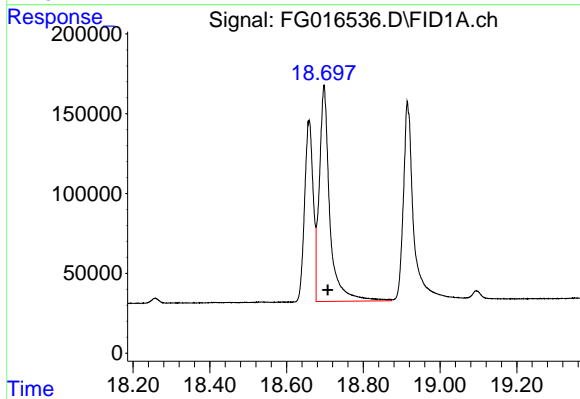
#18 Benzo[a]pyrene (C31.34)

R.T.: 17.278 min
Delta R.T.: -0.013 min
Response: 2191644
Conc: 17.59 ug/ml



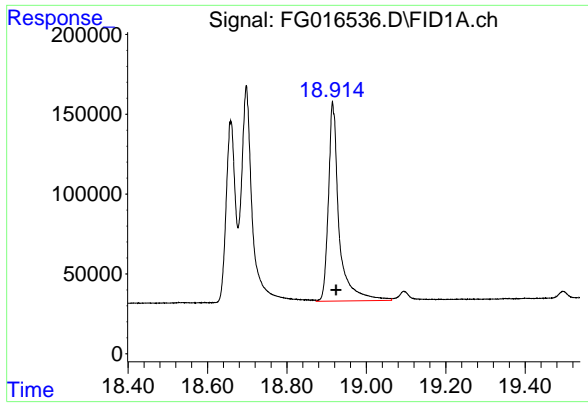
#19 Indeno[1,2,3-cd]pyrene (C35.01)

R.T.: 18.659 min
Delta R.T.: -0.007 min
Response: 1760429
Conc: 15.30 ug/ml



#20 Dibenz[a,h]anthracene (C30.36)

R.T.: 18.698 min
Delta R.T.: -0.009 min
Response: 2574546
Conc: 21.32 ug/ml



#21 Benzo[g,h,i]perylene (C34.01)

R.T.: 18.916 min
Delta R.T.: -0.008 min
Response: 2320776
Conc: 19.43 ug/ml