

Data Path : Z:\pestpcbsrv\HPCHEM1\FID_F\Data\FF092420\
 Data File : FF007666.D
 Signal(s) : FID2B.ch
 Acq On : 24 Sep 2020 17:55
 Operator : DD\AJ
 Sample : 50 PPM TRPH STD
 Misc :
 ALS Vial : 53 Sample Multiplier: 1

Integration File: autoint1.e
 Quant Time: Sep 25 02:13:31 2020
 Quant Method : Z:\pestpcbsrv\HPCHEM1\FID_F\Method\FF090120.M
 Quant Title :
 QLast Update : Wed Sep 02 11:29:30 2020
 Response via : Initial Calibration
 Integrator: ChemStation

Volume Inj. : 1uL
 Signal Phase : Rxi-1ms
 Signal Info : 20mx0.18mmx0.18um

Compound	R.T.	Response	Conc Units

System Monitoring Compounds			
9) S TETRACOSANE-d50 (SURR...	14.741	6822639	46.389 ug/ml
Target Compounds			
1) N-OCTANE	2.337	8242374	53.197 ug/ml
2) N-DECANE	4.453	8851031	55.491 ug/ml
3) N-DODECANE	6.480	8906715	54.749 ug/ml
4) N-TETRADECANE	8.278	8730169	53.054 ug/ml
5) N-HEXADECANE	9.882	8709471	51.609 ug/ml
6) N-OCTADECANE	11.326	8524618	50.025 ug/ml
7) N-EICOSANE	12.638	8167162	48.577 ug/ml
8) N-DOCOSANE	13.840	7788419	47.272 ug/ml
10) N-TETRACOSANE	14.947	7527271	46.152 ug/ml
11) N-HEXACOSANE	15.971	7187069	45.465 ug/ml
12) N-OCTACOSANE	16.923	7597921	49.509 ug/ml
13) N-TRIACONTANE	17.812	7110621	48.109 ug/ml
14) N-DOTRIACONTANE	18.649	7508356	54.112 ug/ml
15) N-TETRATRIACONTANE	19.434	7986665	63.286 ug/ml
16) N-HEXATRIACONTANE	20.179	9722528	81.357 ug/ml
17) N-OCTATRIACONTANE	20.938	8700799	81.481 ug/ml
18) N-TETRACONTANE	21.884	7147927	64.427 ug/ml

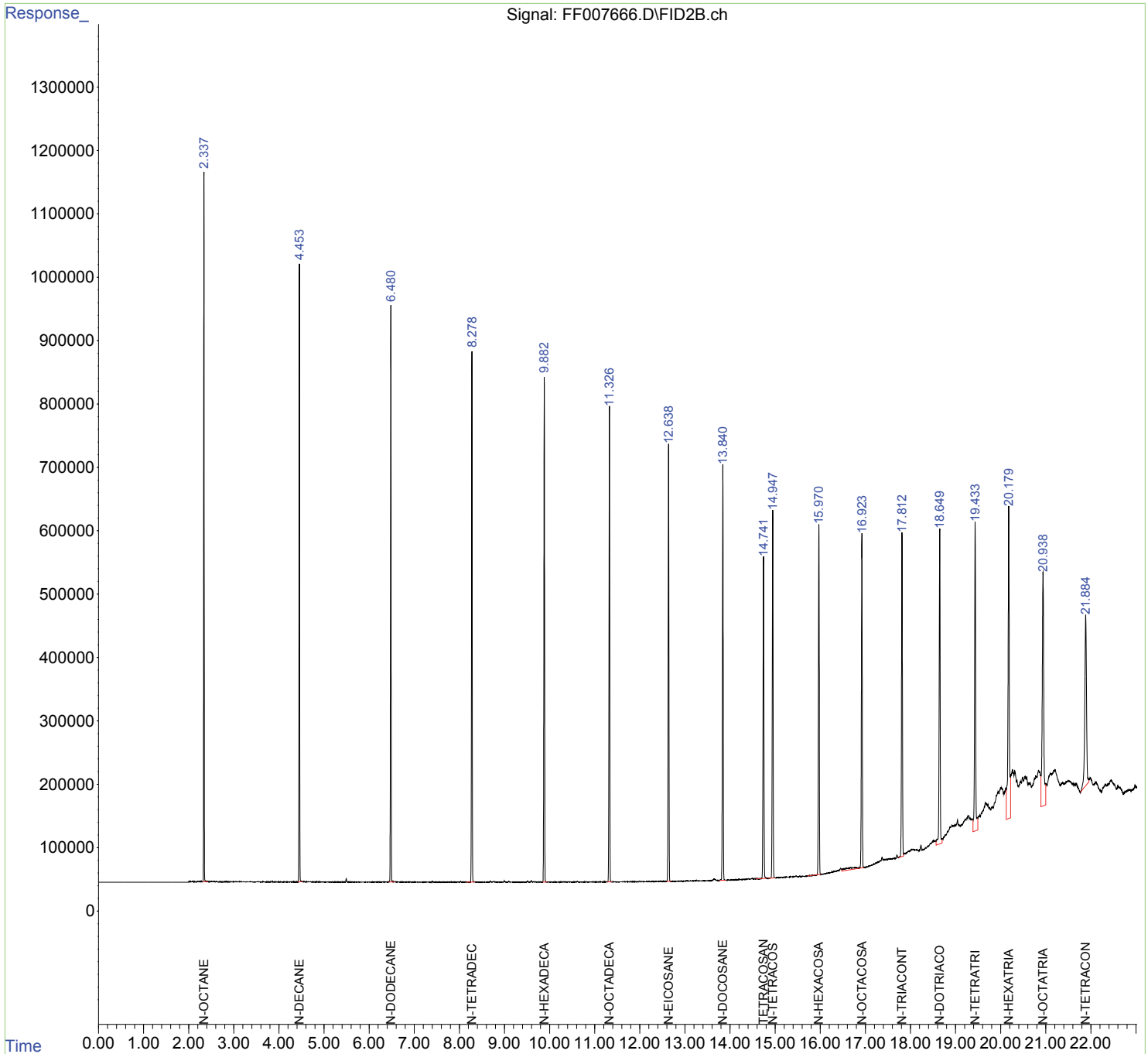
(f)=RT Delta > 1/2 Window

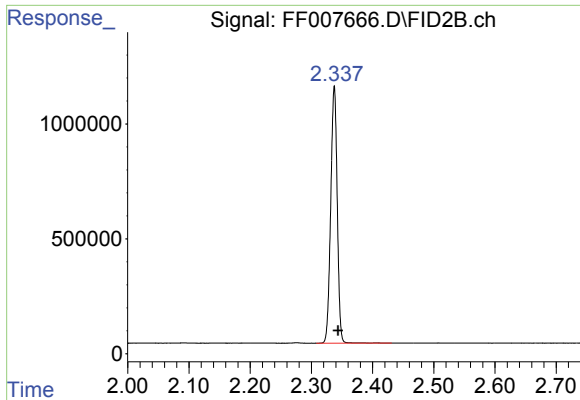
(m)=manual int.

Data Path : Z:\pestpcbsrv\HPCHEM1\FID_F\Data\FF092420\
 Data File : FF007666.D
 Signal(s) : FID2B.ch
 Acq On : 24 Sep 2020 17:55
 Operator : DD\AJ
 Sample : 50 PPM TRPH STD
 Misc :
 ALS Vial : 53 Sample Multiplier: 1

Integration File: autoint1.e
 Quant Time: Sep 25 02:13:31 2020
 Quant Method : Z:\pestpcbsrv\HPCHEM1\FID_F\Method\FF090120.M
 Quant Title :
 QLast Update : Wed Sep 02 11:29:30 2020
 Response via : Initial Calibration
 Integrator: ChemStation

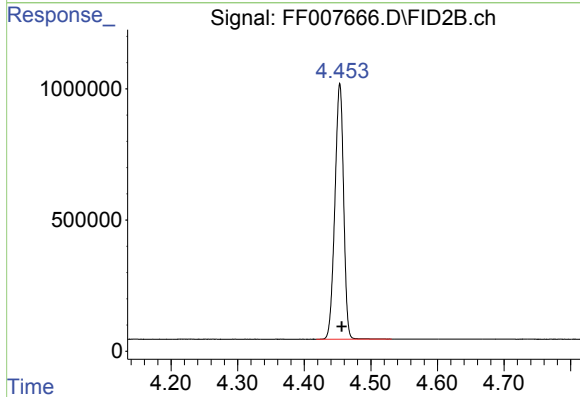
Volume Inj. : 1uL
 Signal Phase : Rxi-1ms
 Signal Info : 20mx0.18mmx0.18um





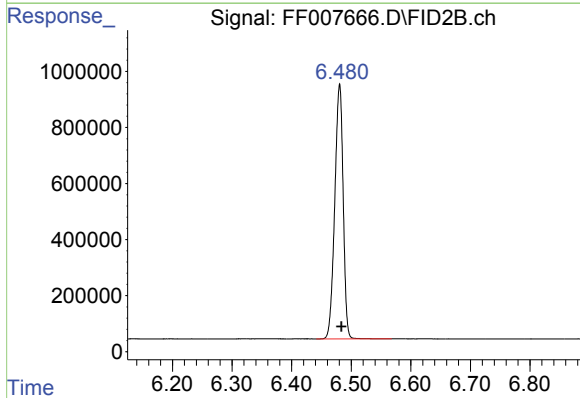
#1 N-OCTANE

R.T.: 2.337 min
Delta R.T.: -0.007 min
Response: 8242374
Conc: 53.20 ug/ml



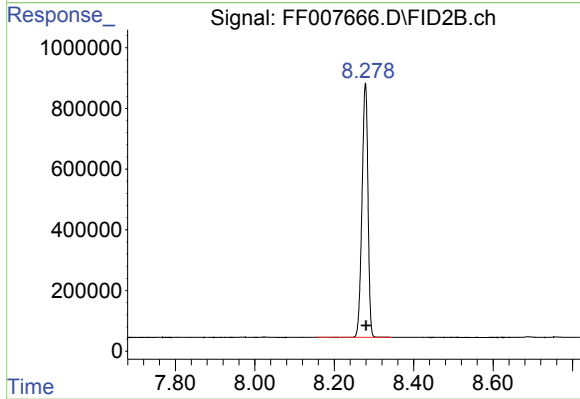
#2 N-DECANE

R.T.: 4.453 min
Delta R.T.: -0.003 min
Response: 8851031
Conc: 55.49 ug/ml



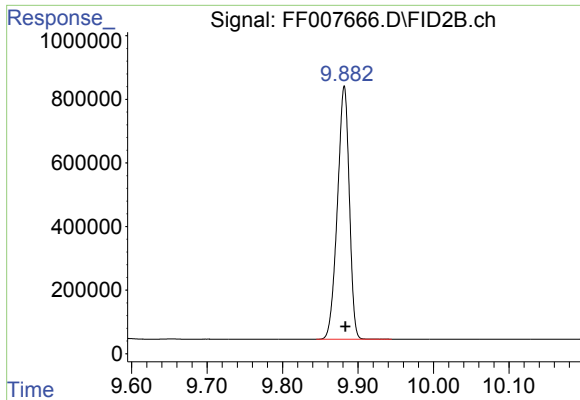
#3 N-DODECANE

R.T.: 6.480 min
Delta R.T.: -0.003 min
Response: 8906715
Conc: 54.75 ug/ml

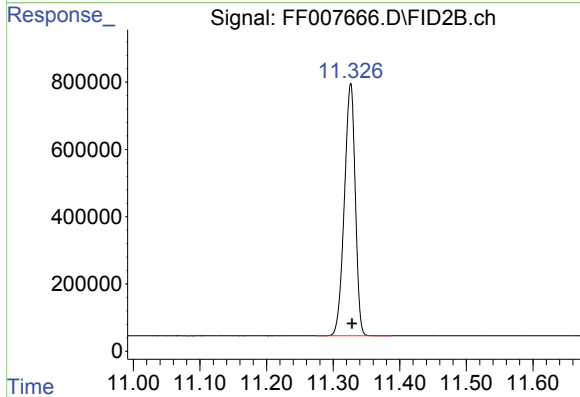


#4 N-TETRADECANE

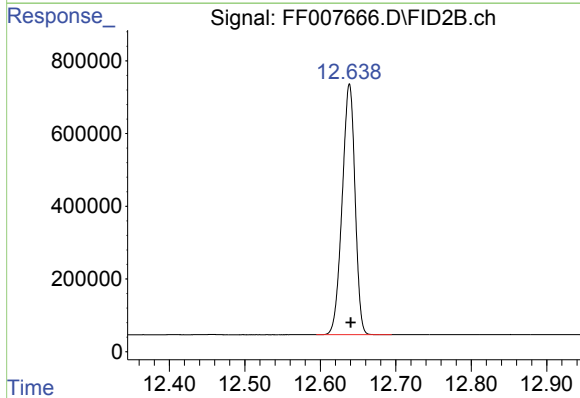
R.T.: 8.278 min
Delta R.T.: -0.002 min
Response: 8730169
Conc: 53.05 ug/ml



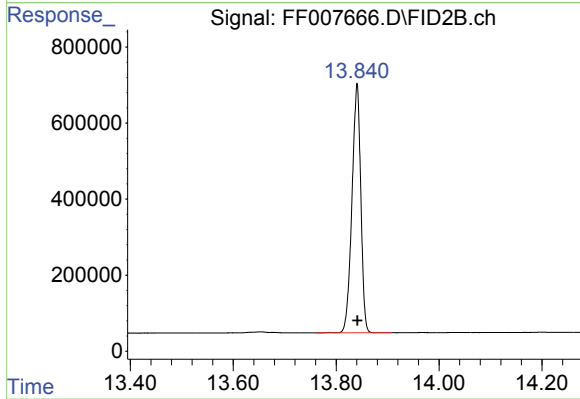
#5 N-HEXADECANE
R.T.: 9.882 min
Delta R.T.: -0.002 min
Response: 8709471
Conc: 51.61 ug/ml



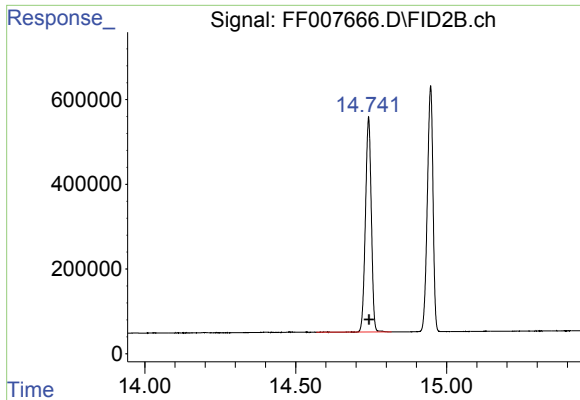
#6 N-OCTADECANE
R.T.: 11.326 min
Delta R.T.: -0.002 min
Response: 8524618
Conc: 50.03 ug/ml



#7 N-EICOSANE
R.T.: 12.638 min
Delta R.T.: -0.002 min
Response: 8167162
Conc: 48.58 ug/ml

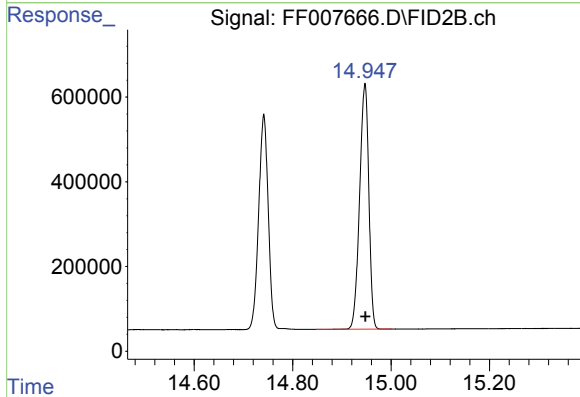


#8 N-DOCOSANE
R.T.: 13.840 min
Delta R.T.: -0.001 min
Response: 7788419
Conc: 47.27 ug/ml



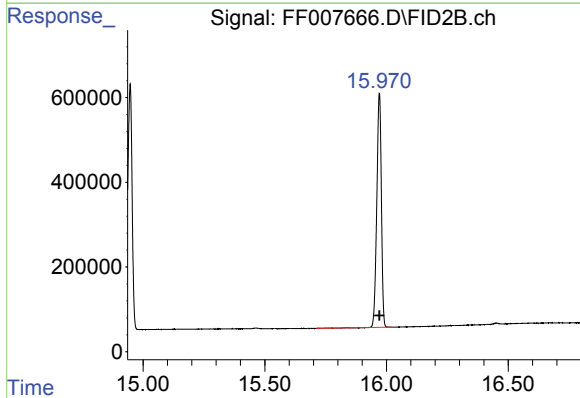
#9 TETRACOSANE-d50 (SURROGATE)

R.T.: 14.741 min
Delta R.T.: -0.002 min
Response: 6822639
Conc: 46.39 ug/ml



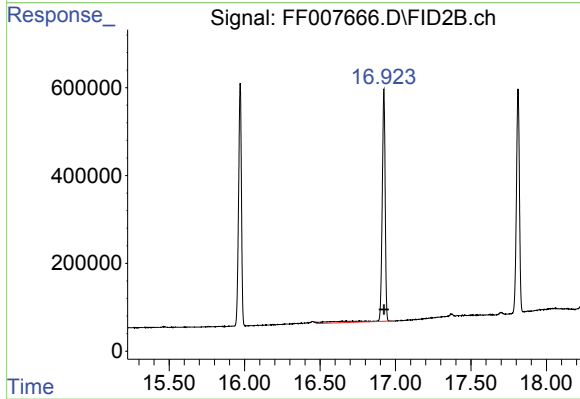
#10 N-TETRACOSANE

R.T.: 14.947 min
Delta R.T.: 0.000 min
Response: 7527271
Conc: 46.15 ug/ml



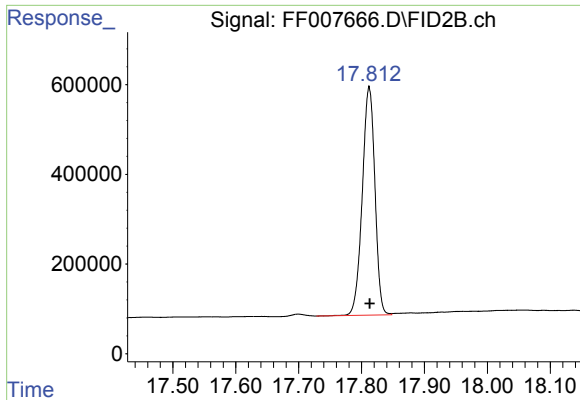
#11 N-HEXACOSANE

R.T.: 15.971 min
Delta R.T.: 0.000 min
Response: 7187069
Conc: 45.47 ug/ml

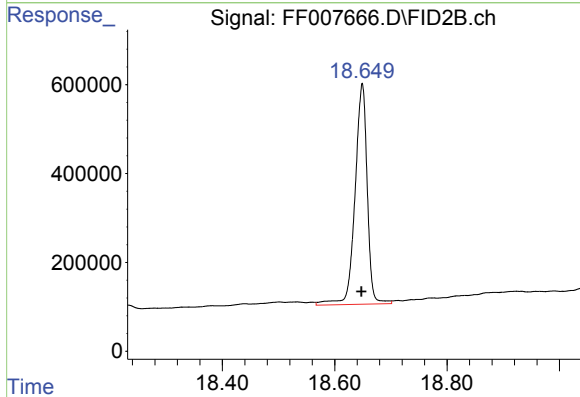


#12 N-OCTACOSANE

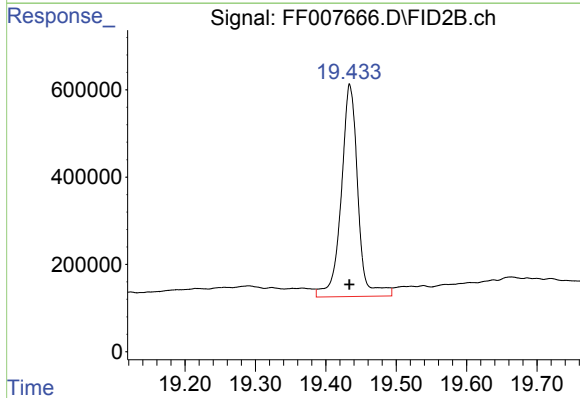
R.T.: 16.923 min
Delta R.T.: 0.000 min
Response: 7597921
Conc: 49.51 ug/ml



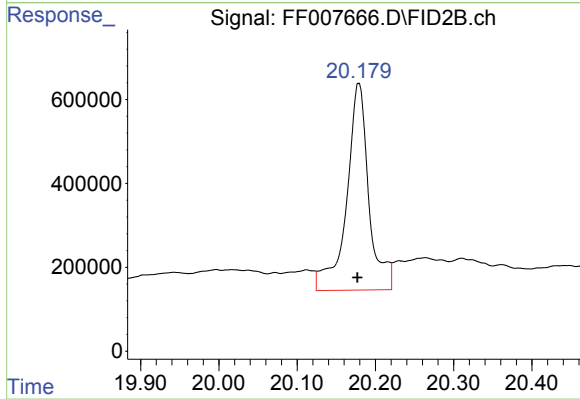
#13 N-TRIACONTANE
R.T.: 17.812 min
Delta R.T.: -0.001 min
Response: 7110621
Conc: 48.11 ug/ml



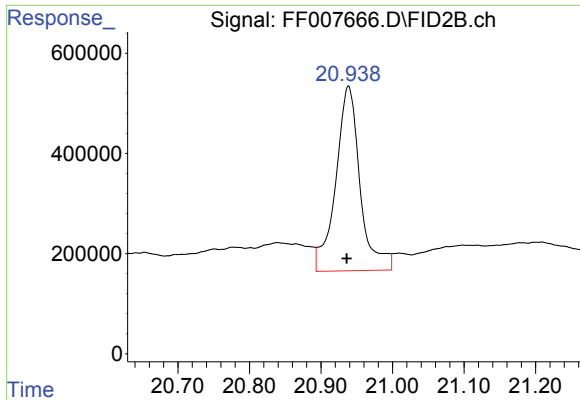
#14 N-DOTRIACONTANE
R.T.: 18.649 min
Delta R.T.: 0.002 min
Response: 7508356
Conc: 54.11 ug/ml



#15 N-TETRATRIACONTANE
R.T.: 19.434 min
Delta R.T.: 0.000 min
Response: 7986665
Conc: 63.29 ug/ml

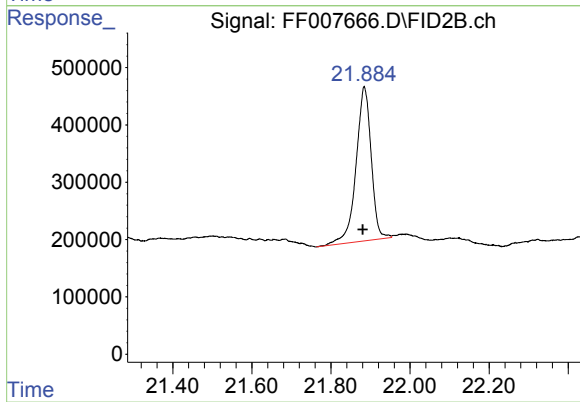


#16 N-HEXATRIACONTANE
R.T.: 20.179 min
Delta R.T.: 0.002 min
Response: 9722528
Conc: 81.36 ug/ml



#17 N-OCTATRIACONTANE

R.T.: 20.938 min
Delta R.T.: 0.003 min
Response: 8700799
Conc: 81.48 ug/ml



#18 N-TETRACONTANE

R.T.: 21.884 min
Delta R.T.: 0.004 min
Response: 7147927
Conc: 64.43 ug/ml