

Data Path : Z:\pestpcbsrv\HPCHEM1\FID\_F\Data\FF100623AL\  
Data File : FF013566.D  
Signal(s) : FID2B.ch  
Acq On : 06 Oct 2023 17:56  
Operator : YP\AJ  
Sample : I.BLK  
Misc :  
ALS Vial : 51 Sample Multiplier: 1

Integration File: autoint1.e  
Quant Time: Oct 07 07:05:10 2023  
Quant Method : Z:\pestpcbsrv\HPCHEM1\FID\_F\Method\Aliphatic EPH 100623.M  
Quant Title : GC Extractables  
QLast Update : Sat Oct 07 07:01:38 2023  
Response via : Initial Calibration  
Integrator: ChemStation

Volume Inj. : 1 u1  
Signal Phase : Rxi-1ms  
Signal Info : 20M x 0.18mm x 0.18um

Compound	R.T.	Response	Conc Units
-----			
System Monitoring Compounds			
Target Compounds			
-----			

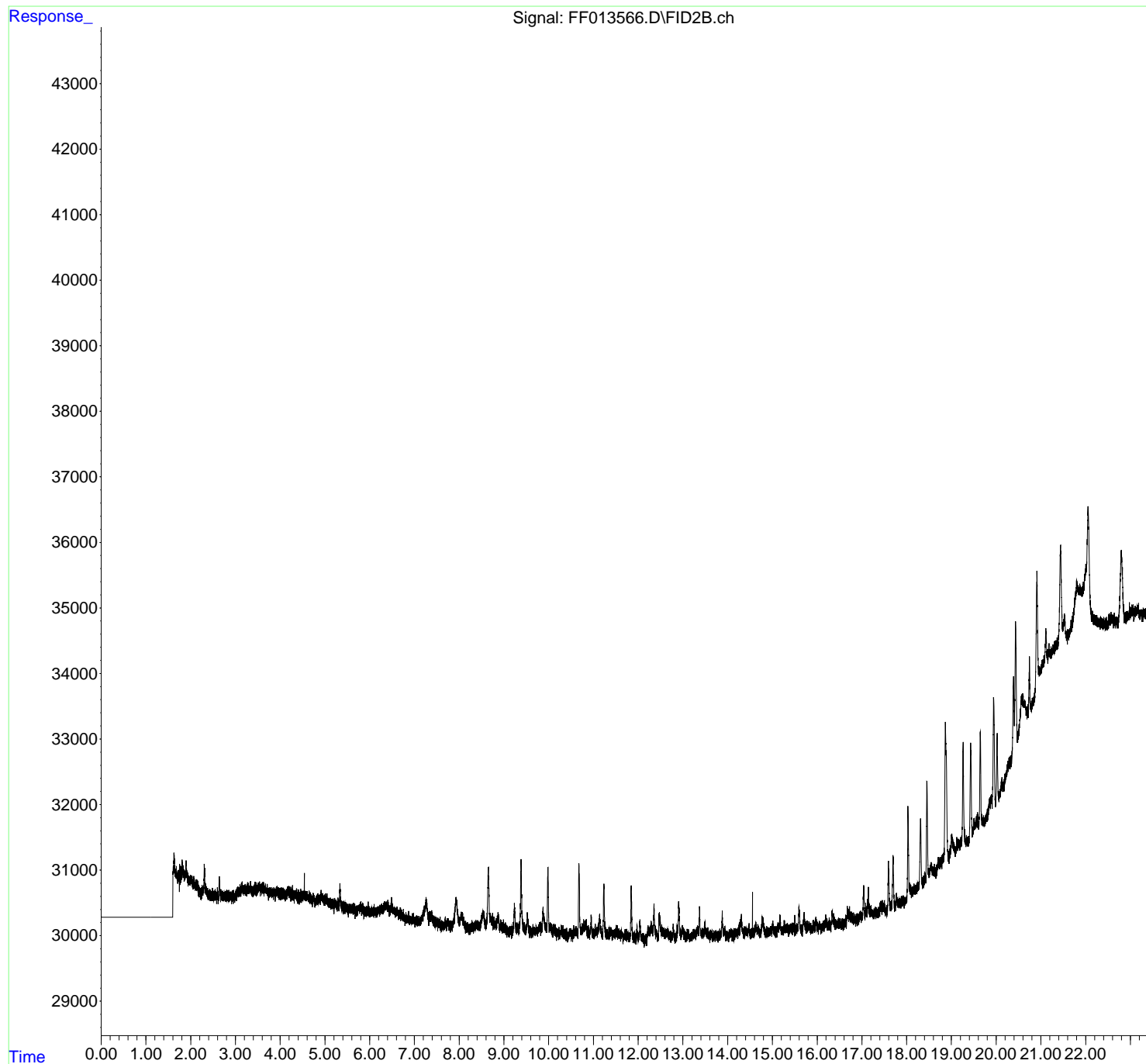
(f)=RT Delta > 1/2 Window

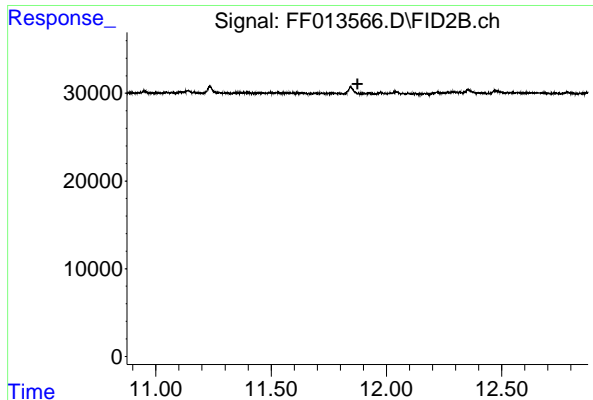
(m)=manual int.

Data Path : Z:\pestpcbsrv\HPCHEM1\FID\_F\Data\FF100623AL\  
Data File : FF013566.D  
Signal(s) : FID2B.ch  
Acq On : 06 Oct 2023 17:56  
Operator : YP\AJ  
Sample : I.BLK  
Misc :  
ALS Vial : 51 Sample Multiplier: 1

Integration File: autoint1.e  
Quant Time: Oct 07 07:05:10 2023  
Quant Method : Z:\pestpcbsrv\HPCHEM1\FID\_F\Method\Aliphatic EPH 100623.M  
Quant Title : GC Extractables  
QLast Update : Sat Oct 07 07:01:38 2023  
Response via : Initial Calibration  
Integrator: ChemStation

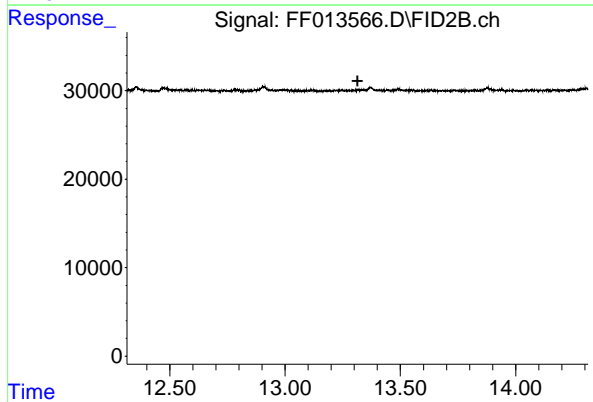
Volume Inj. : 1 ul  
Signal Phase : Rxi-1ms  
Signal Info : 20M x 0.18mm x 0.18um





#9 ortho-Terphenyl (SURR)

R.T.: 0.000 min  
Exp R.T. : 11.875 min  
Response: 0  
Conc: N.D.



#12 1-chlorooctadecane (SURR)

R.T.: 0.000 min  
Exp R.T. : 13.314 min  
Response: 0  
Conc: N.D.