

Data Path : Z:\pestpcbsrv\HPCHEM1\FID_F\Data\FF100623AL\
 Data File : FF013567.D
 Signal(s) : FID2B.ch
 Acq On : 06 Oct 2023 18:26
 Operator : YP\AJ
 Sample : 100 PPM ALIPHATIC HC STD1
 Misc :
 ALS Vial : 71 Sample Multiplier: 1

Integration File: autoint1.e
 Quant Time: Oct 07 06:57:25 2023
 Quant Method : Z:\pestpcbsrv\HPCHEM1\FID_F\Method\Aliphatic EPH 100623.M
 Quant Title : GC Extractables
 QLast Update : Sat Oct 07 06:57:12 2023
 Response via : Initial Calibration
 Integrator: ChemStation

Volume Inj. : 1 ul
 Signal Phase : Rxi-1ms
 Signal Info : 20M x 0.18mm x 0.18um

| Compound | R.T. | Response | Conc Units |
|--------------------------------|--------|----------|--------------|
| ----- | | | |
| System Monitoring Compounds | | | |
| 9) S ortho-Terphenyl (SURR) | 11.885 | 14994758 | 94.797 ug/ml |
| Spiked Amount | 50.000 | Recovery | = 189.59% |
| 12) S 1-chlorooctadecane (S... | 13.322 | 11246035 | 94.952 ug/ml |
| Spiked Amount | 50.000 | Recovery | = 189.90% |
| Target Compounds | | | |
| 1) T n-Nonane (C9) | 3.276 | 11902642 | 95.291 ug/ml |
| 2) T n-Decane (C10) | 4.528 | 12139104 | 95.208 ug/ml |
| 3) T A~Naphthalene (C11.7) | 6.225 | 13358517 | 96.462 ug/ml |
| 4) T n-Dodecane (C12) | 6.692 | 12226598 | 95.391 ug/ml |
| 5) T A~2-methylnaphthalene... | 7.320 | 12947317 | 96.903 ug/ml |
| 6) T n-Tetradecane (C14) | 8.519 | 12109012 | 96.003 ug/ml |
| 7) T n-Hexadecane (C16) | 10.125 | 12607229 | 95.882 ug/ml |
| 8) T n-Octadecane (C18) | 11.570 | 12965077 | 95.567 ug/ml |
| 10) T n-Eicosane (C20) | 12.879 | 12702987 | 94.689 ug/ml |
| 11) T n-Heneicosane (C21) | 13.490 | 12573246 | 94.797 ug/ml |
| 13) T n-Docosane (C22) | 14.077 | 12578662 | 94.807 ug/ml |
| 14) T n-Tetracosane (C24) | 15.180 | 12648957 | 94.461 ug/ml |
| 15) T n-Hexacosane (C26) | 16.202 | 12478106 | 94.137 ug/ml |
| 16) T n-Octacosane (C28) | 17.152 | 12180396 | 93.880 ug/ml |
| 17) T n-Tricontane (C30) | 18.039 | 12182669 | 92.387 ug/ml |
| 18) T n-Dotriacontane (C32) | 18.871 | 11799584 | 91.391 ug/ml |
| 19) T n-Tetratriacontane (C34) | 19.655 | 11384465 | 92.064 ug/ml |
| 20) T n-Hexatriacontane (C36) | 20.393 | 10899305 | 89.788 ug/ml |
| 21) T n-Octatriacontane (C38) | 21.122 | 10665893 | 93.452 ug/ml |
| 22) T n-Tetracontane (C40) | 22.014 | 10533312 | 94.216 ug/ml |

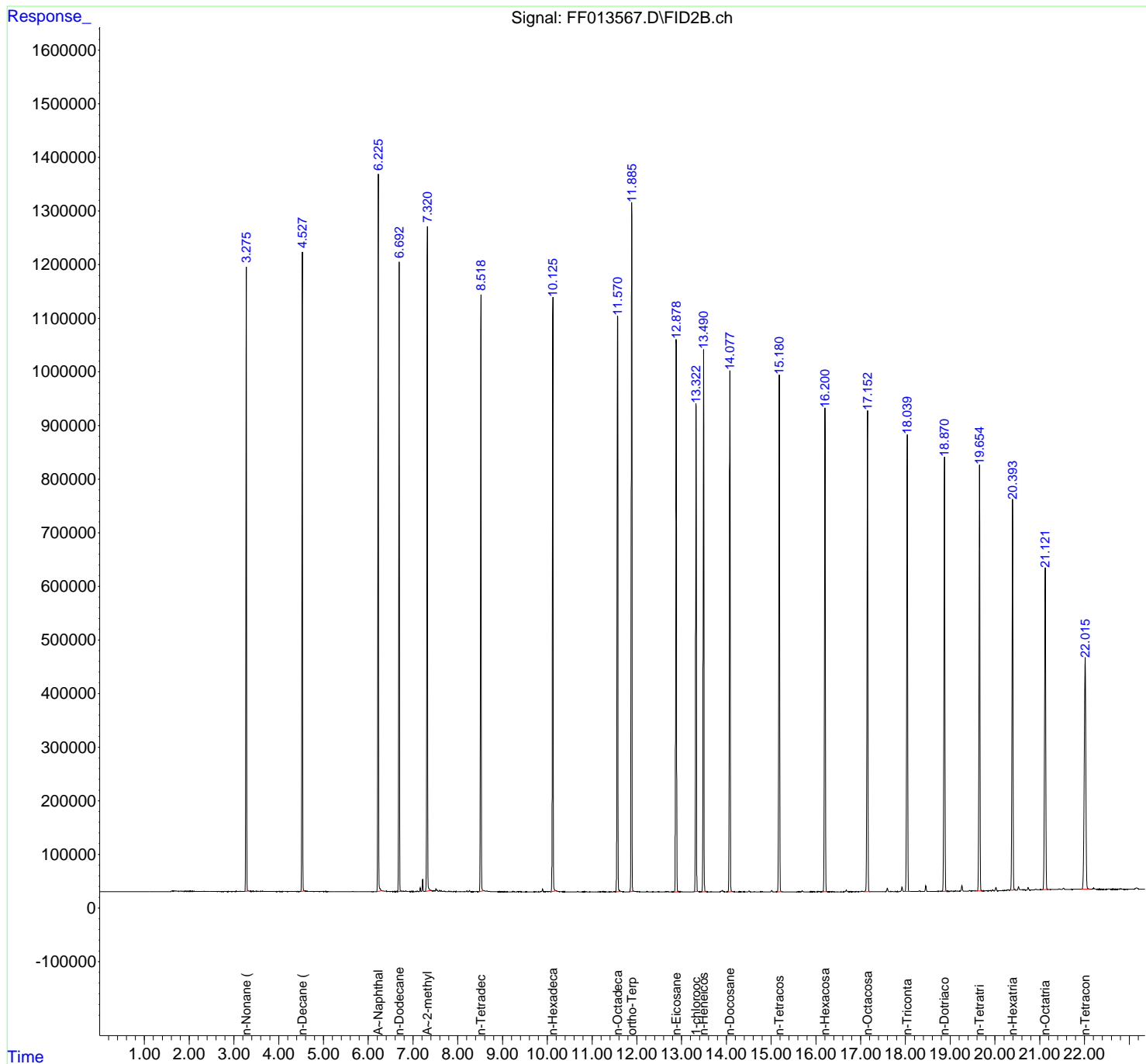
(f)=RT Delta > 1/2 Window

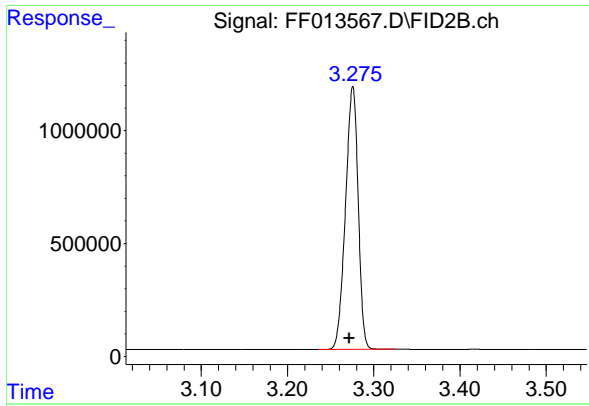
(m)=manual int.

Data Path : Z:\pestpcbsrv\HPCHEM1\FID_F\Data\FF100623AL\
 Data File : FF013567.D
 Signal(s) : FID2B.ch
 Acq On : 06 Oct 2023 18:26
 Operator : YP\AJ
 Sample : 100 PPM ALIPHATIC HC STD1
 Misc :
 ALS Vial : 71 Sample Multiplier: 1

Integration File: autoint1.e
 Quant Time: Oct 07 06:57:25 2023
 Quant Method : Z:\pestpcbsrv\HPCHEM1\FID_F\Method\Aliphatic EPH 100623.M
 Quant Title : GC Extractables
 QLast Update : Sat Oct 07 06:57:12 2023
 Response via : Initial Calibration
 Integrator: ChemStation

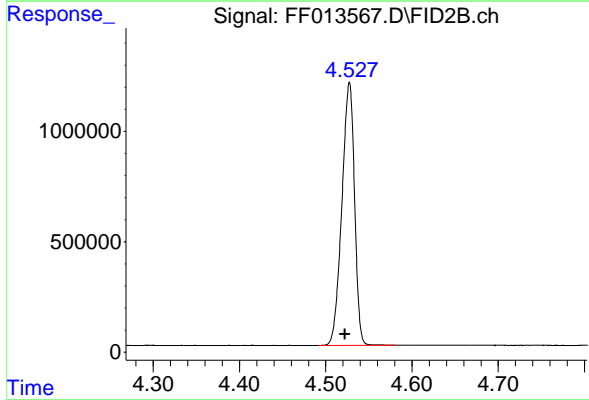
Volume Inj. : 1 ul
 Signal Phase : Rxi-1ms
 Signal Info : 20M x 0.18mm x 0.18um





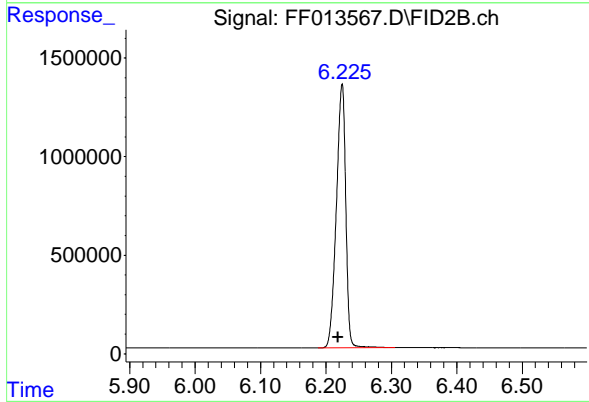
#1 n-Nonane (C9)

R.T.: 3.276 min
Delta R.T.: 0.004 min
Response: 11902642
Conc: 95.29 ug/ml



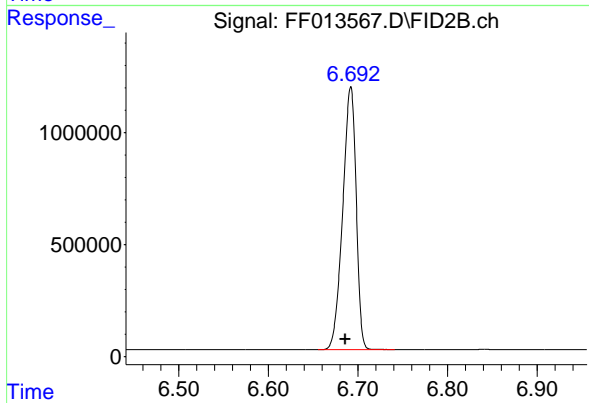
#2 n-Decane (C10)

R.T.: 4.528 min
Delta R.T.: 0.005 min
Response: 12139104
Conc: 95.21 ug/ml



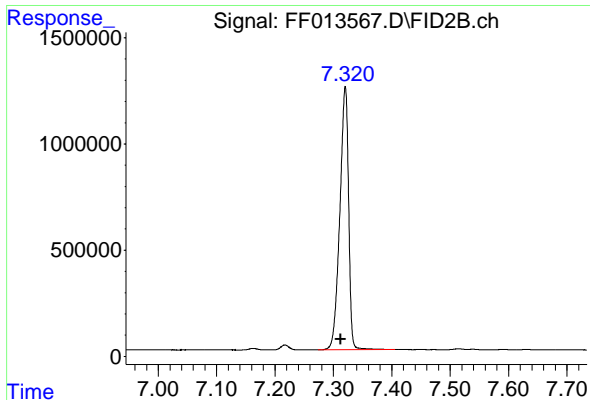
#3 A~Naphthalene (C11.7)

R.T.: 6.225 min
Delta R.T.: 0.006 min
Response: 13358517
Conc: 96.46 ug/ml



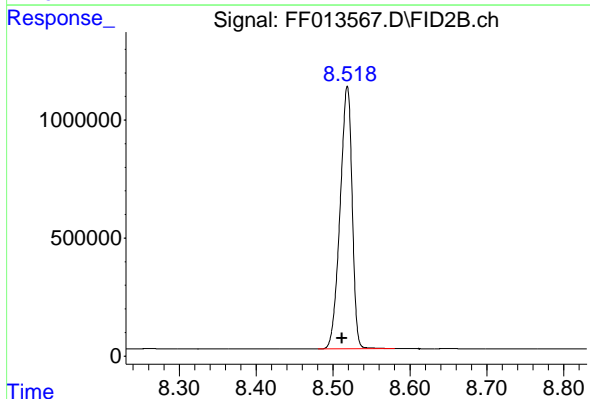
#4 n-Dodecane (C12)

R.T.: 6.692 min
Delta R.T.: 0.006 min
Response: 12226598
Conc: 95.39 ug/ml



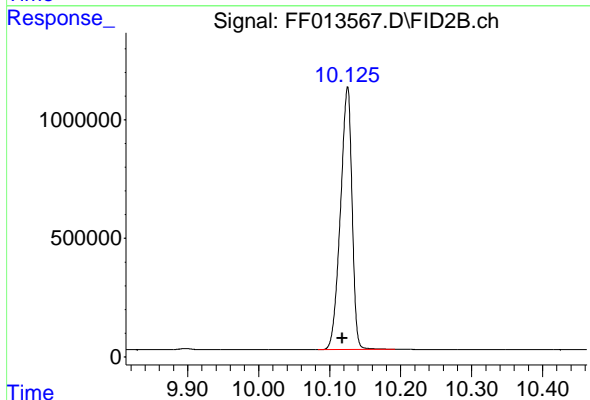
#5 A~2-methylnaphthalene (C12.89)

R.T.: 7.320 min
Delta R.T.: 0.008 min
Response: 12947317
Conc: 96.90 ug/ml



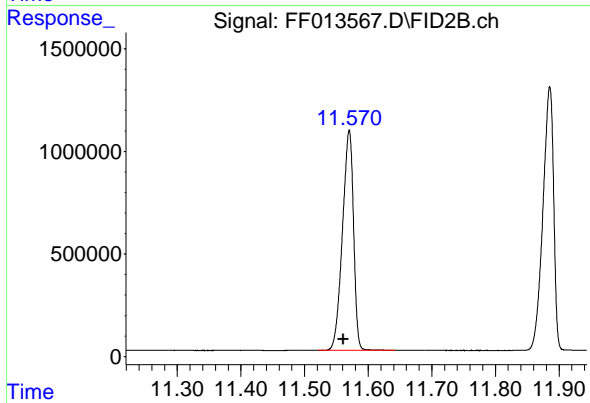
#6 n-Tetradecane (C14)

R.T.: 8.519 min
Delta R.T.: 0.007 min
Response: 12109012
Conc: 96.00 ug/ml



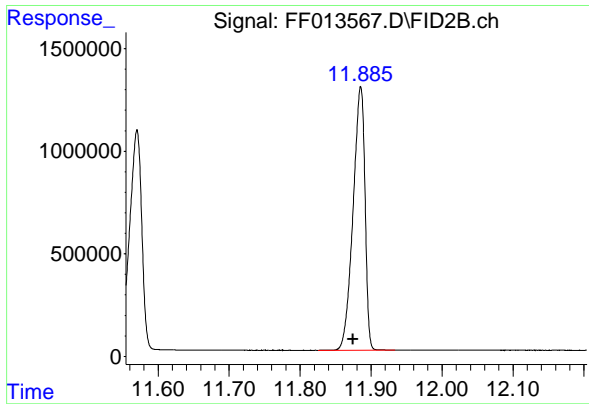
#7 n-Hexadecane (C16)

R.T.: 10.125 min
Delta R.T.: 0.007 min
Response: 12607229
Conc: 95.88 ug/ml



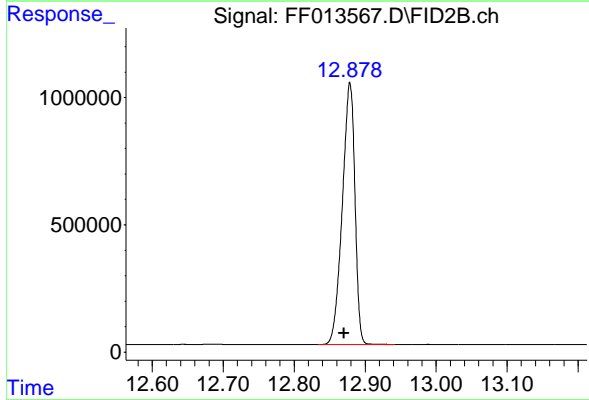
#8 n-Octadecane (C18)

R.T.: 11.570 min
Delta R.T.: 0.009 min
Response: 12965077
Conc: 95.57 ug/ml



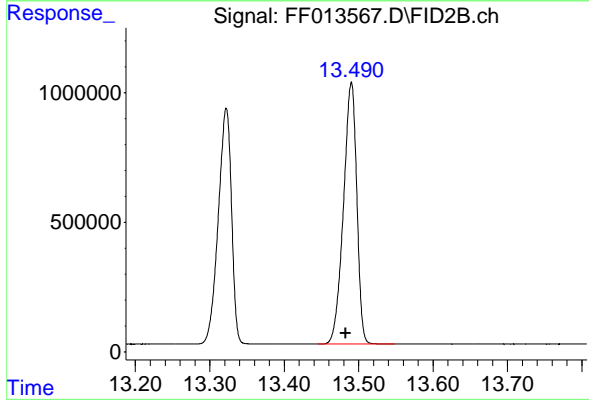
#9 ortho-Terphenyl (SURR)

R.T.: 11.885 min
Delta R.T.: 0.011 min
Response: 14994758
Conc: 94.80 ug/ml



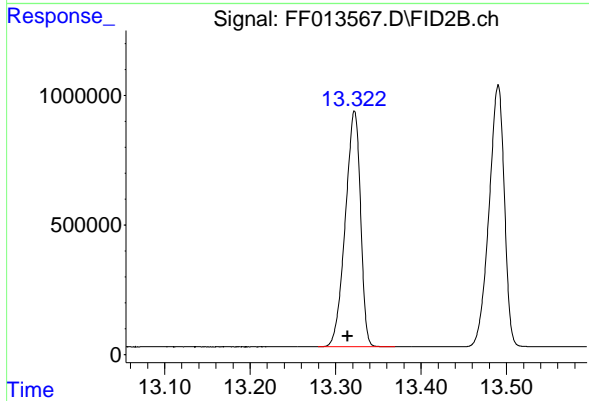
#10 n-Eicosane (C20)

R.T.: 12.879 min
Delta R.T.: 0.008 min
Response: 12702987
Conc: 94.69 ug/ml



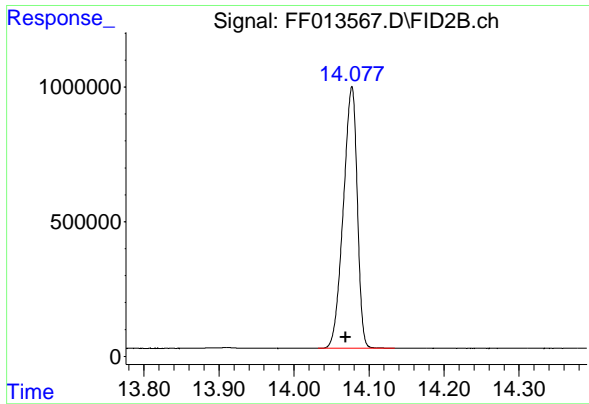
#11 n-Heneicosane (C21)

R.T.: 13.490 min
Delta R.T.: 0.008 min
Response: 12573246
Conc: 94.80 ug/ml



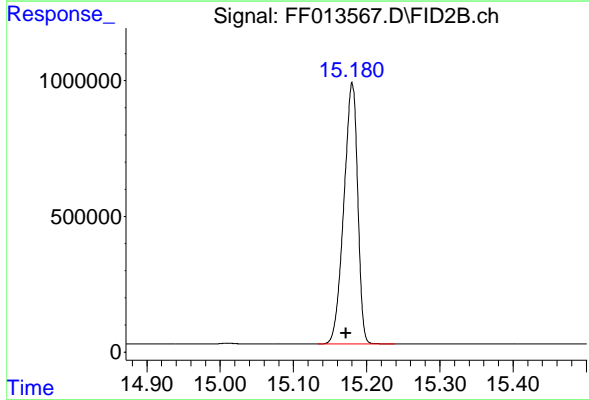
#12 1-chlorooctadecane (SURR)

R.T.: 13.322 min
Delta R.T.: 0.008 min
Response: 11246035
Conc: 94.95 ug/ml



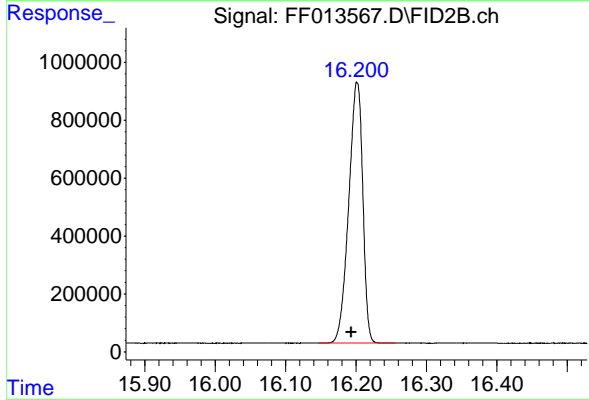
#13 n-Docosane (C22)

R.T.: 14.077 min
Delta R.T.: 0.009 min
Response: 12578662
Conc: 94.81 ug/ml



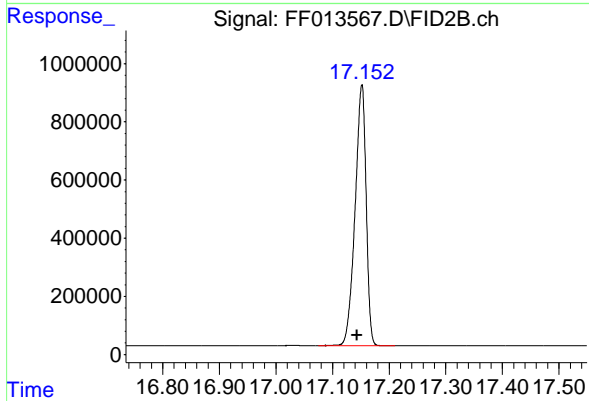
#14 n-Tetracosane (C24)

R.T.: 15.180 min
Delta R.T.: 0.008 min
Response: 12648957
Conc: 94.46 ug/ml



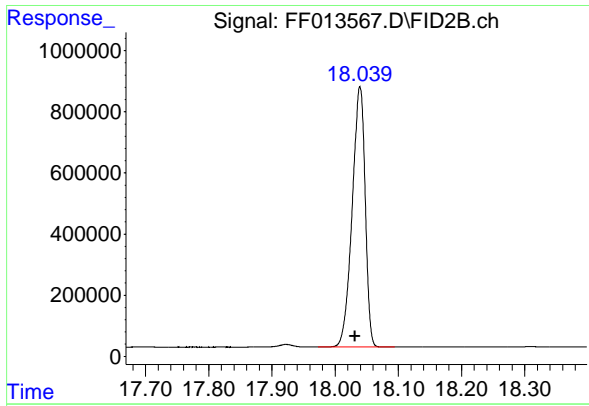
#15 n-Hexacosane (C26)

R.T.: 16.202 min
Delta R.T.: 0.008 min
Response: 12478106
Conc: 94.14 ug/ml



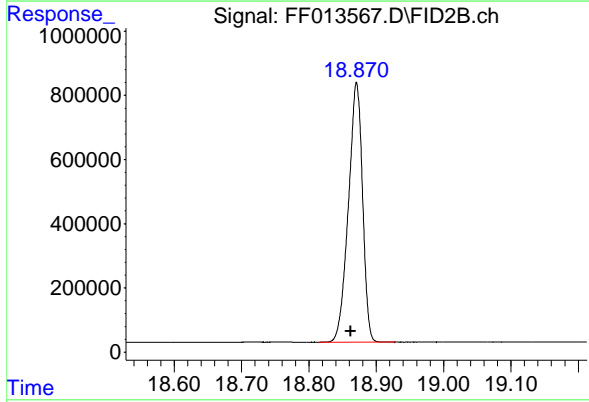
#16 n-Octacosane (C28)

R.T.: 17.152 min
Delta R.T.: 0.008 min
Response: 12180396
Conc: 93.88 ug/ml



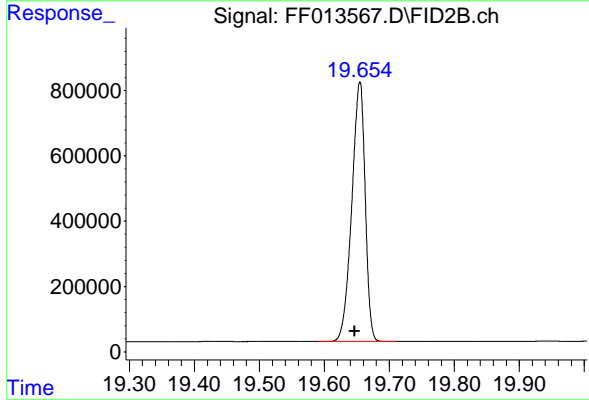
#17 n-Tricontane (C30)

R.T.: 18.039 min
Delta R.T.: 0.008 min
Response: 12182669
Conc: 92.39 ug/ml



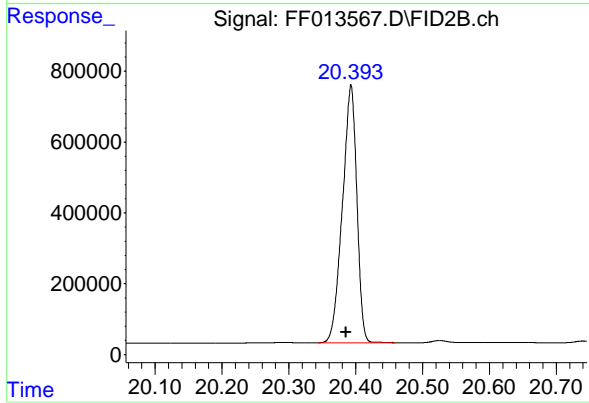
#18 n-Dotriacontane (C32)

R.T.: 18.871 min
Delta R.T.: 0.008 min
Response: 11799584
Conc: 91.39 ug/ml



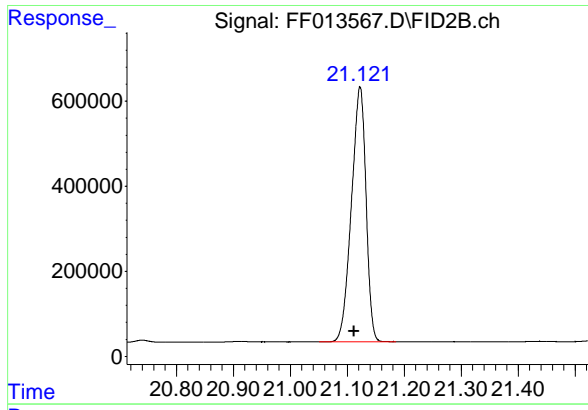
#19 n-Tetracontane (C34)

R.T.: 19.655 min
Delta R.T.: 0.008 min
Response: 11384465
Conc: 92.06 ug/ml



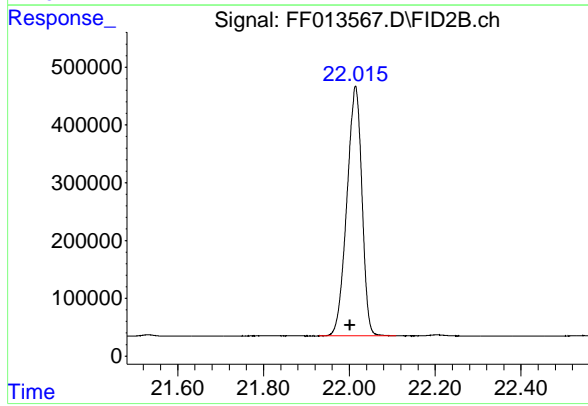
#20 n-Hexatriacontane (C36)

R.T.: 20.393 min
Delta R.T.: 0.008 min
Response: 10899305
Conc: 89.79 ug/ml



#21 n-Octatriacontane (C38)

R.T.: 21.122 min
Delta R.T.: 0.011 min
Response: 10665893
Conc: 93.45 ug/ml



#22 n-Tetracontane (C40)

R.T.: 22.014 min
Delta R.T.: 0.012 min
Response: 10533312
Conc: 94.22 ug/ml