

Data Path : Z:\pestpcbsrv\HPCHEM1\FID_E\Data\FE102025AL\
 Data File : FE056378.D
 Signal(s) : FID1B.ch
 Acq On : 20 Oct 2025 08:36
 Operator : YP\AJ
 Sample : MECL2
 Misc :
 ALS Vial : 1 Sample Multiplier: 1

Instrument :
 FID_F
 ClientSampleId :
 MECL2

Integration File: autoint1.e
 Quant Time: Oct 21 02:49:48 2025
 Quant Method : Z:\pestpcbsrv\HPCHEM1\FID_E\methods\Aliphatic EPH 101725.M
 Quant Title : GC Extractables
 QLast Update : Fri Oct 17 08:31:49 2025
 Response via : Initial Calibration
 Integrator: ChemStation

Volume Inj. : 1 ul
 Signal Phase : Rxi-1ms
 Signal Info : 20M x 0.18mm x 0.18um

Compound	R.T.	Response	Conc Units

System Monitoring Compounds			
Target Compounds			

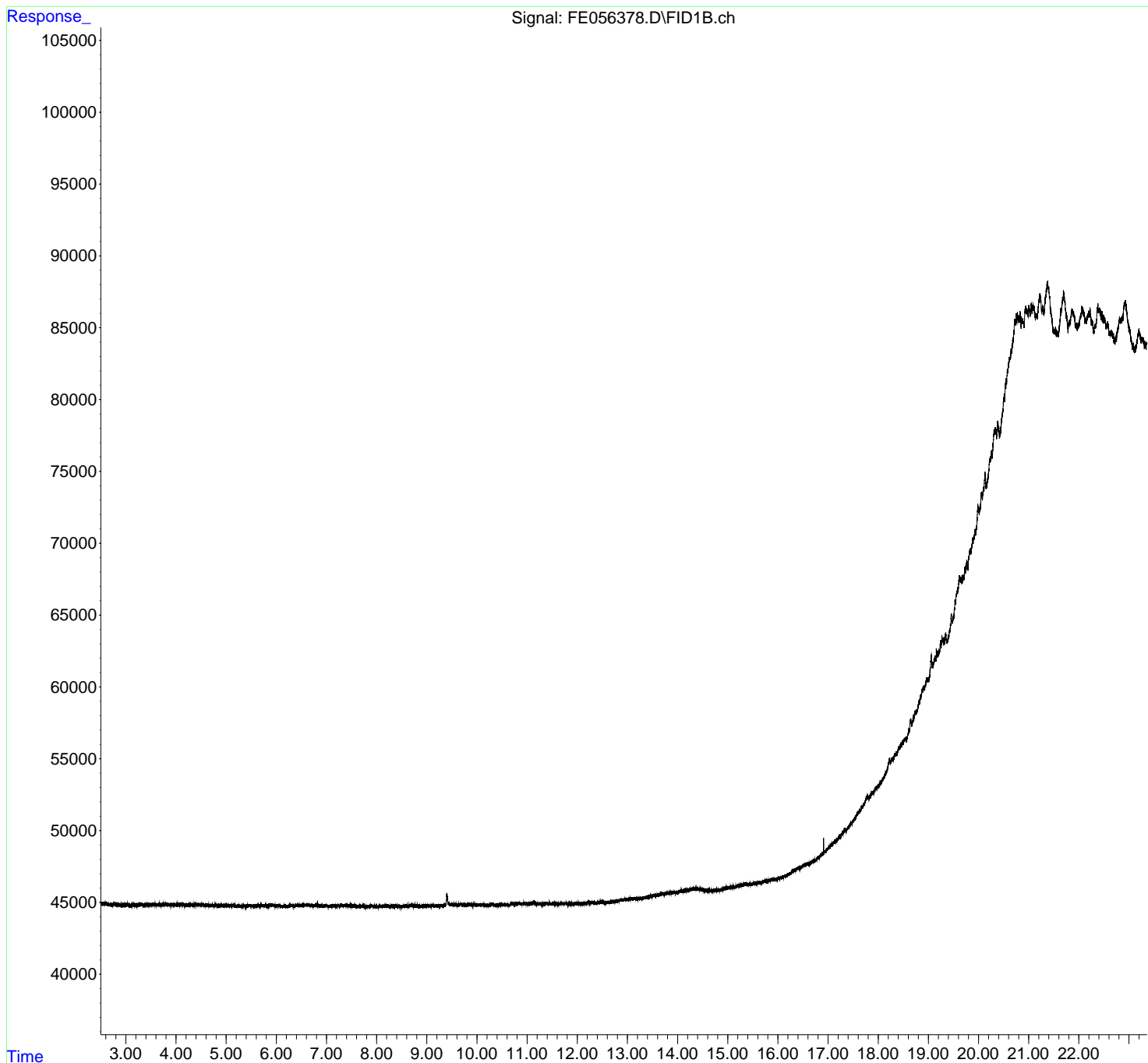
(f)=RT Delta > 1/2 Window (m)=manual int.

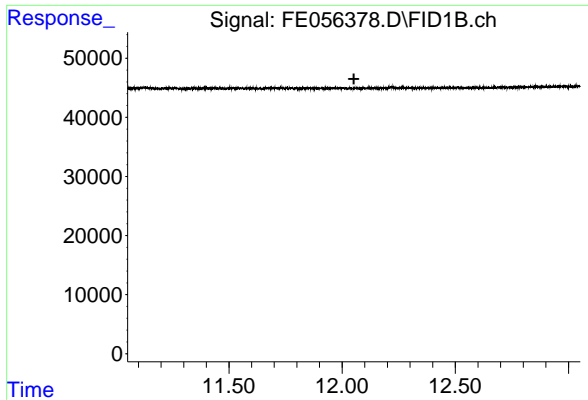
Data Path : Z:\pestpcbsrv\HPCHEM1\FID_E\Data\FE102025AL\
 Data File : FE056378.D
 Signal(s) : FID1B.ch
 Acq On : 20 Oct 2025 08:36
 Operator : YP\AJ
 Sample : MECL2
 Misc :
 ALS Vial : 1 Sample Multiplier: 1

Instrument :
 FID_F
 ClientSampleId :
 MECL2

Integration File: autoint1.e
 Quant Time: Oct 21 02:49:48 2025
 Quant Method : Z:\pestpcbsrv\HPCHEM1\FID_E\methods\Aliphatic EPH 101725.M
 Quant Title : GC Extractables
 QLast Update : Fri Oct 17 08:31:49 2025
 Response via : Initial Calibration
 Integrator: ChemStation

Volume Inj. : 1 ul
 Signal Phase : Rxi-1ms
 Signal Info : 20M x 0.18mm x 0.18um

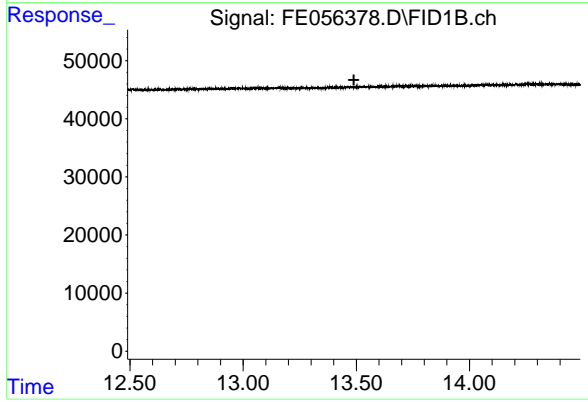




#9 ortho-Terphenyl (SURR)

R.T.: 0.000 min
Exp R.T. : 12.052 min
Response: 0
Conc: N.D.

Instrument :
FID_F
ClientSampleId :
MECL2



#12 1-chlorooctadecane (SURR)

R.T.: 0.000 min
Exp R.T. : 13.489 min
Response: 0
Conc: N.D.