

Data Path : Z:\pestpcbsrv\HPCHEM1\FID\_E\Data\FE102025AL\  
 Data File : FE056381.D  
 Signal(s) : FID1B.ch  
 Acq On : 20 Oct 2025 10:10  
 Operator : YP\AJ  
 Sample : Q3366-01DL 10X  
 Misc :  
 ALS Vial : 11 Sample Multiplier: 1

Instrument :  
 FID\_F  
 ClientSampleId :  
 TR-06-101625

Integration File: autoint1.e  
 Quant Time: Oct 21 02:50:52 2025  
 Quant Method : Z:\pestpcbsrv\HPCHEM1\FID\_E\methods\Aliphatic EPH 101725.M  
 Quant Title : GC Extractables  
 QLast Update : Fri Oct 17 08:31:49 2025  
 Response via : Initial Calibration  
 Integrator: ChemStation

Volume Inj. : 1 ul  
 Signal Phase : Rxi-1ms  
 Signal Info : 20M x 0.18mm x 0.18um

Compound	R.T.	Response	Conc Units
-----			
System Monitoring Compounds			
9) S ortho-Terphenyl (SURR)	12.053	548504	2.685 ug/ml
Spiked Amount	50.000	Recovery =	5.37%
12) S 1-chlorooctadecane (S...	13.490	357382	2.342 ug/ml
Spiked Amount	50.000	Recovery =	4.68%
Target Compounds			
4) T n-Dodecane (C12)	6.827	211714	1.262 ug/ml
5) T A~2-methylnaphthalene...	7.478	91072	0.547 ug/ml
6) T n-Tetradecane (C14)	8.663	426002	2.564 ug/ml
7) T n-Hexadecane (C16)	10.278	416694	2.382 ug/ml
8) T n-Octadecane (C18)	11.726	332021	1.820 ug/ml
10) T n-Eicosane (C20)	13.041	257783	1.448 ug/ml
11) T n-Heneicosane (C21)	13.656	148434	0.846 ug/ml
13) T n-Docosane (C22)	14.244	106406	0.601 ug/ml
17) T n-Tricontane (C30)	18.217	120608	0.664 ug/ml
18) T n-Dotriacontane (C32)	19.051	154209	0.875 ug/ml
19) T n-Tetratriacontane (C34)	19.837	115048	0.743 ug/ml
20) T n-Hexatriacontane (C36)	20.578	53361	0.427 ug/ml
-----			

(f)=RT Delta > 1/2 Window

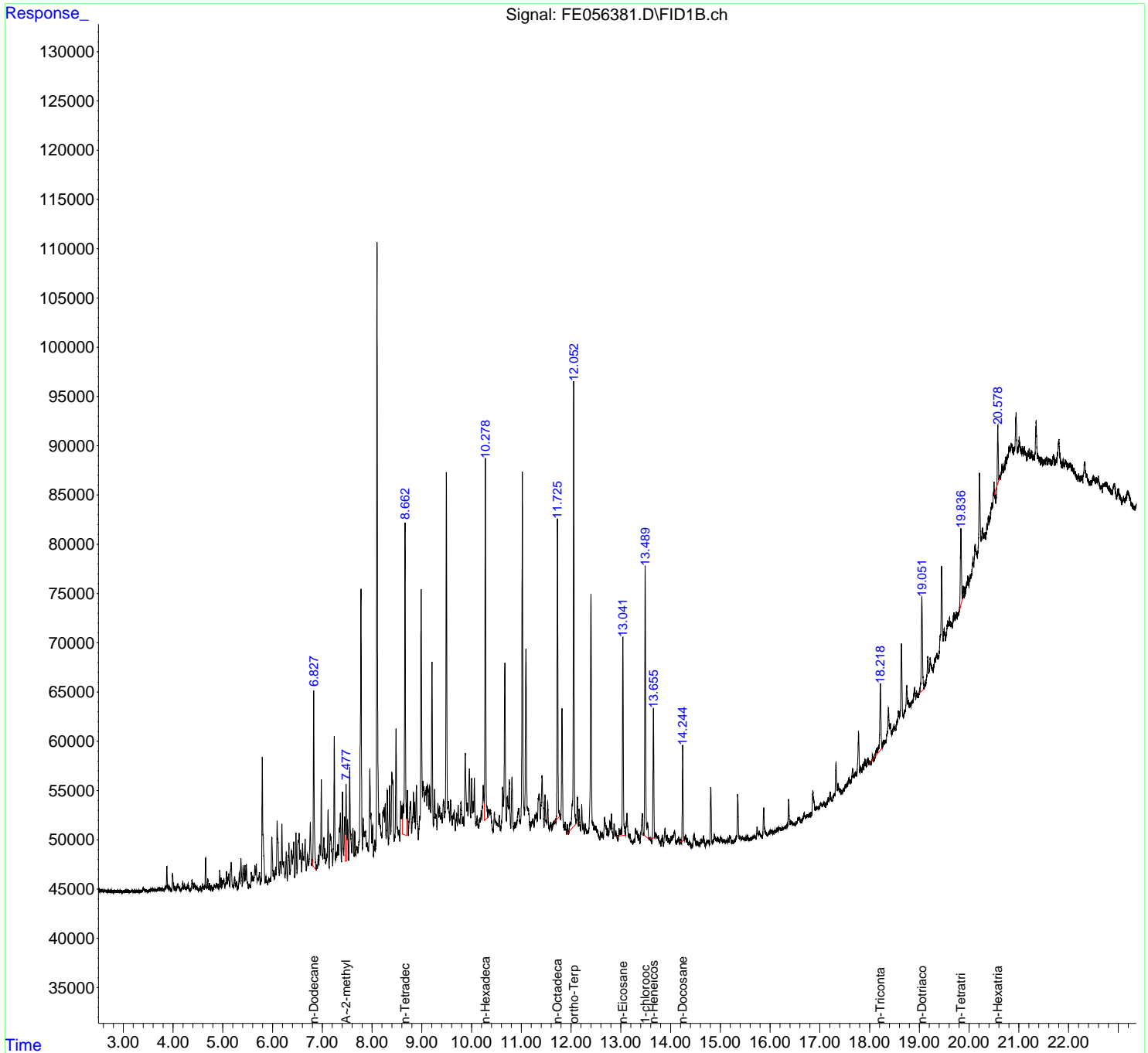
(m)=manual int.

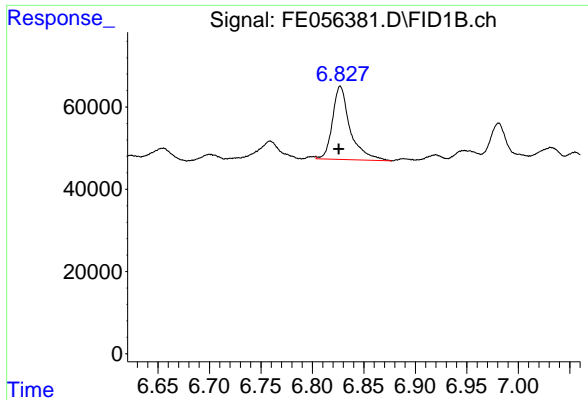
Data Path : Z:\pestpcbsrv\HPCHEM1\FID\_E\Data\FE102025AL\  
 Data File : FE056381.D  
 Signal(s) : FID1B.ch  
 Acq On : 20 Oct 2025 10:10  
 Operator : YP\AJ  
 Sample : Q3366-01DL 10X  
 Misc :  
 ALS Vial : 11 Sample Multiplier: 1

**Instrument :**  
 FID\_F  
**ClientSampleId :**  
 TR-06-101625

Integration File: autoint1.e  
 Quant Time: Oct 21 02:50:52 2025  
 Quant Method : Z:\pestpcbsrv\HPCHEM1\FID\_E\methods\Aliphatic EPH 101725.M  
 Quant Title : GC Extractables  
 QLast Update : Fri Oct 17 08:31:49 2025  
 Response via : Initial Calibration  
 Integrator: ChemStation

Volume Inj. : 1 ul  
 Signal Phase : Rxi-1ms  
 Signal Info : 20M x 0.18mm x 0.18um

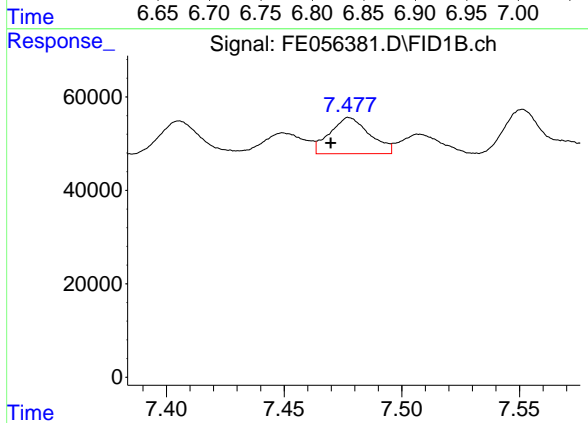




#4 n-Dodecane (C12)

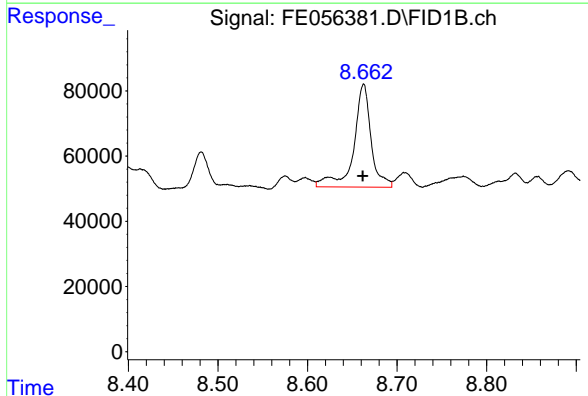
R.T.: 6.827 min  
 Delta R.T.: 0.002 min  
 Response: 211714  
 Conc: 1.26 ug/ml

Instrument :  
 FID\_F  
 ClientSampleId :  
 TR-06-101625



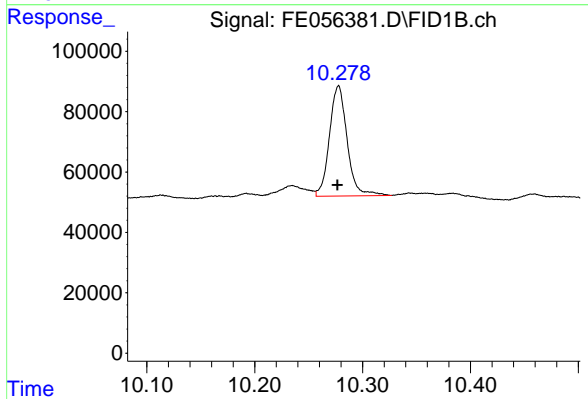
#5 A~2-methylnaphthalene (C12.89)

R.T.: 7.478 min  
 Delta R.T.: 0.008 min  
 Response: 91072  
 Conc: 0.55 ug/ml



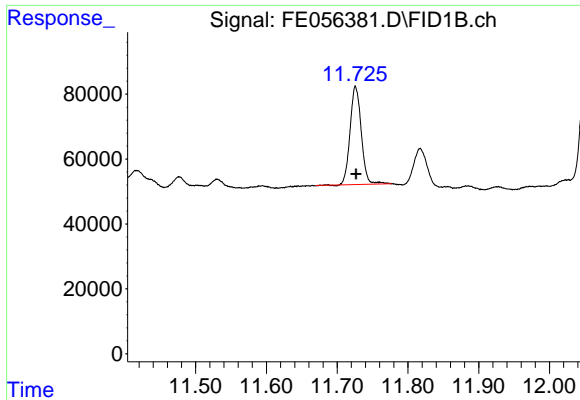
#6 n-Tetradecane (C14)

R.T.: 8.663 min  
 Delta R.T.: 0.000 min  
 Response: 426002  
 Conc: 2.56 ug/ml



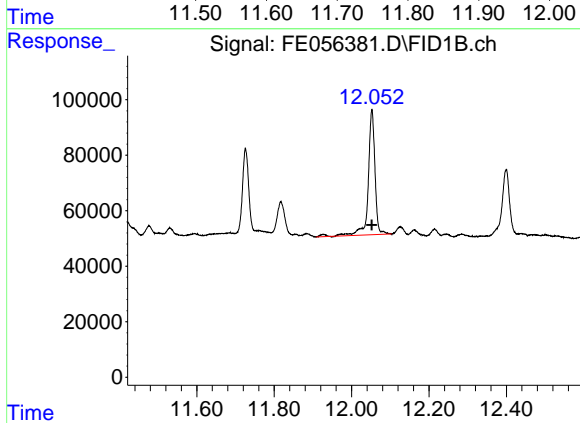
#7 n-Hexadecane (C16)

R.T.: 10.278 min  
 Delta R.T.: 0.001 min  
 Response: 416694  
 Conc: 2.38 ug/ml

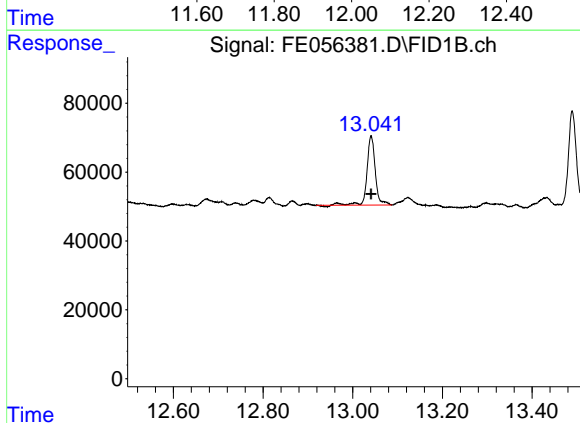


#8 n-Octadecane (C18)  
 R.T.: 11.726 min  
 Delta R.T.: 0.000 min  
 Response: 332021  
 Conc: 1.82 ug/ml

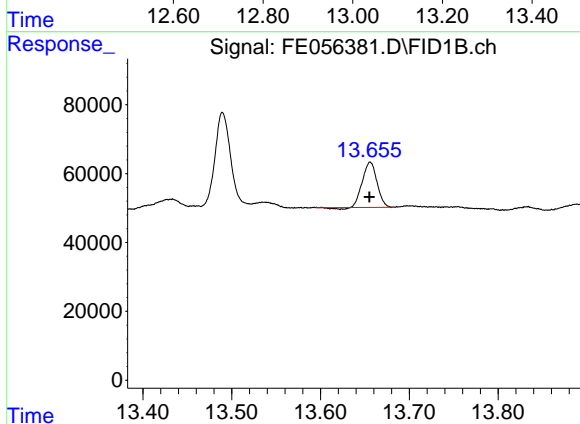
Instrument : FID\_F  
 ClientSampleId : TR-06-101625



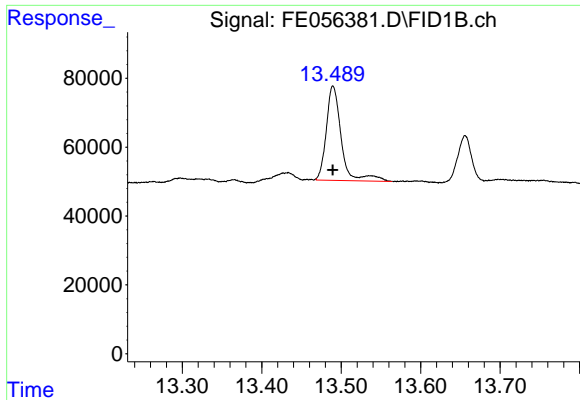
#9 ortho-Terphenyl (SURRE)  
 R.T.: 12.053 min  
 Delta R.T.: 0.000 min  
 Response: 548504  
 Conc: 2.68 ug/ml



#10 n-Eicosane (C20)  
 R.T.: 13.041 min  
 Delta R.T.: 0.000 min  
 Response: 257783  
 Conc: 1.45 ug/ml



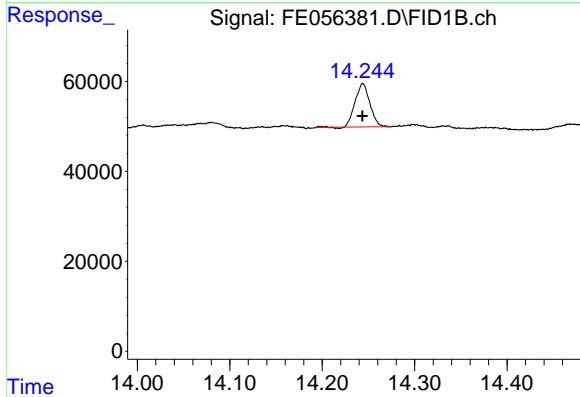
#11 n-Heneicosane (C21)  
 R.T.: 13.656 min  
 Delta R.T.: 0.000 min  
 Response: 148434  
 Conc: 0.85 ug/ml



#12 1-chlorooctadecane (SURR)

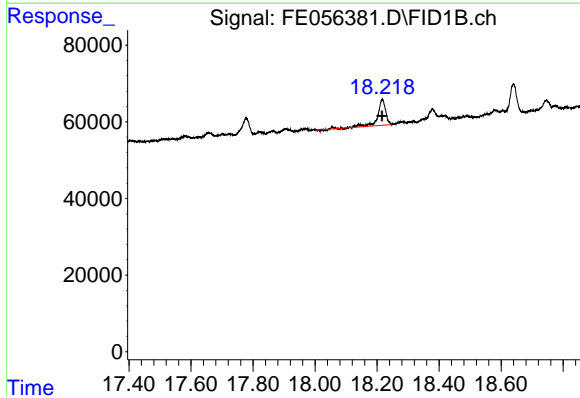
R.T.: 13.490 min  
 Delta R.T.: 0.000 min  
 Response: 357382  
 Conc: 2.34 ug/ml

Instrument :  
 FID\_F  
 ClientSampleId :  
 TR-06-101625



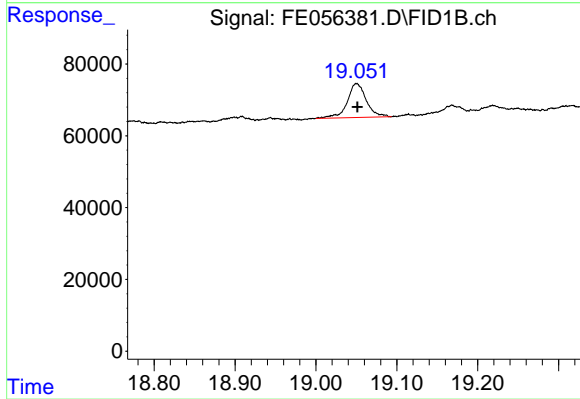
#13 n-Docosane (C22)

R.T.: 14.244 min  
 Delta R.T.: 0.000 min  
 Response: 106406  
 Conc: 0.60 ug/ml



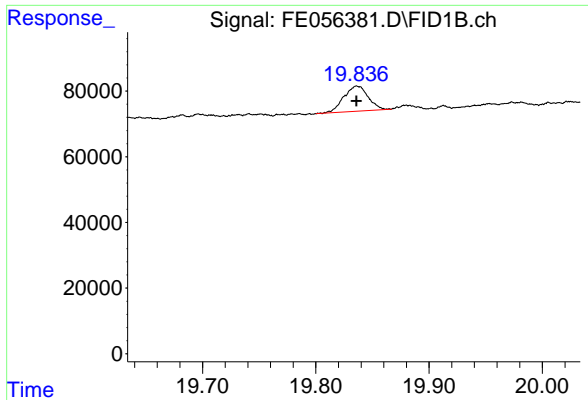
#17 n-Tricontane (C30)

R.T.: 18.217 min  
 Delta R.T.: 0.000 min  
 Response: 120608  
 Conc: 0.66 ug/ml



#18 n-Dotriacontane (C32)

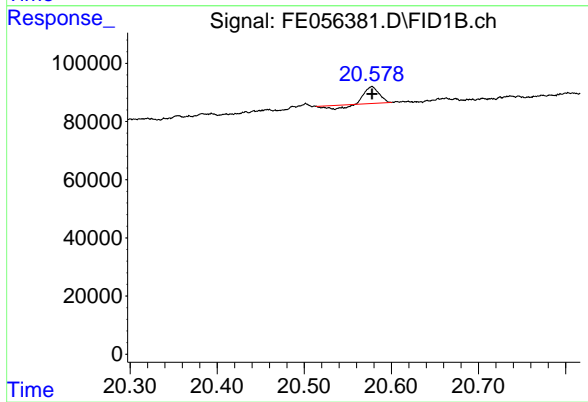
R.T.: 19.051 min  
 Delta R.T.: -0.001 min  
 Response: 154209  
 Conc: 0.87 ug/ml



#19 n-Tetratriacontane (C34)

R.T.: 19.837 min  
Delta R.T.: 0.000 min  
Response: 115048  
Conc: 0.74 ug/ml

Instrument :  
FID\_F  
ClientSampleId :  
TR-06-101625



#20 n-Hexatriacontane (C36)

R.T.: 20.578 min  
Delta R.T.: 0.000 min  
Response: 53361  
Conc: 0.43 ug/ml