

Data Path : Z:\pestpcbsrv\HPCHEM1\FID_E\Data\FE102025AL\
 Data File : FE056382.D
 Signal(s) : FID1B.ch
 Acq On : 20 Oct 2025 10:40
 Operator : YP\AJ
 Sample : Q3366-02DL 10X
 Misc :
 ALS Vial : 12 Sample Multiplier: 1

Instrument :
 FID_F
 ClientSampleId :
 TR-06-101625-E2

Integration File: autoint1.e
 Quant Time: Oct 21 02:51:25 2025
 Quant Method : Z:\pestpcbsrv\HPCHEM1\FID_E\methods\Aliphatic EPH 101725.M
 Quant Title : GC Extractables
 QLast Update : Fri Oct 17 08:31:49 2025
 Response via : Initial Calibration
 Integrator: ChemStation

Volume Inj. : 1 ul
 Signal Phase : Rxi-1ms
 Signal Info : 20M x 0.18mm x 0.18um

Compound	R.T.	Response	Conc Units

System Monitoring Compounds			
9) S ortho-Terphenyl (SURR)	12.052	720708	3.528 ug/ml
Spiked Amount	50.000	Recovery =	7.06%
12) S 1-chlorooctadecane (S...	13.489	587556	3.851 ug/ml
Spiked Amount	50.000	Recovery =	7.70%
Target Compounds			
3) T A~Naphthalene (C11.7)	6.373	100318	0.567 ug/ml
5) T A~2-methylnaphthalene...	7.474	184902	1.110 ug/ml
6) T n-Tetradecane (C14)	8.661	328249	1.976 ug/ml
7) T n-Hexadecane (C16)	10.276	491459	2.809 ug/ml
8) T n-Octadecane (C18)	11.725	428833	2.351 ug/ml
10) T n-Eicosane (C20)	13.040	382088	2.146 ug/ml
11) T n-Heneicosane (C21)	13.655	181699	1.036 ug/ml
13) T n-Docosane (C22)	14.243	109166	0.617 ug/ml
14) T n-Tetracosane (C24)	15.349	377298	2.074 ug/ml
16) T n-Octacosane (C28)	17.259f	176317	0.991 ug/ml
17) T n-Tricontane (C30)	18.216	89657	0.494 ug/ml
18) T n-Dotriacontane (C32)	19.051	178022	1.010 ug/ml
19) T n-Tetratriacontane (C34)	19.836	125753	0.812 ug/ml
20) T n-Hexatriacontane (C36)	20.578	136558	1.093 ug/ml

(f)=RT Delta > 1/2 Window

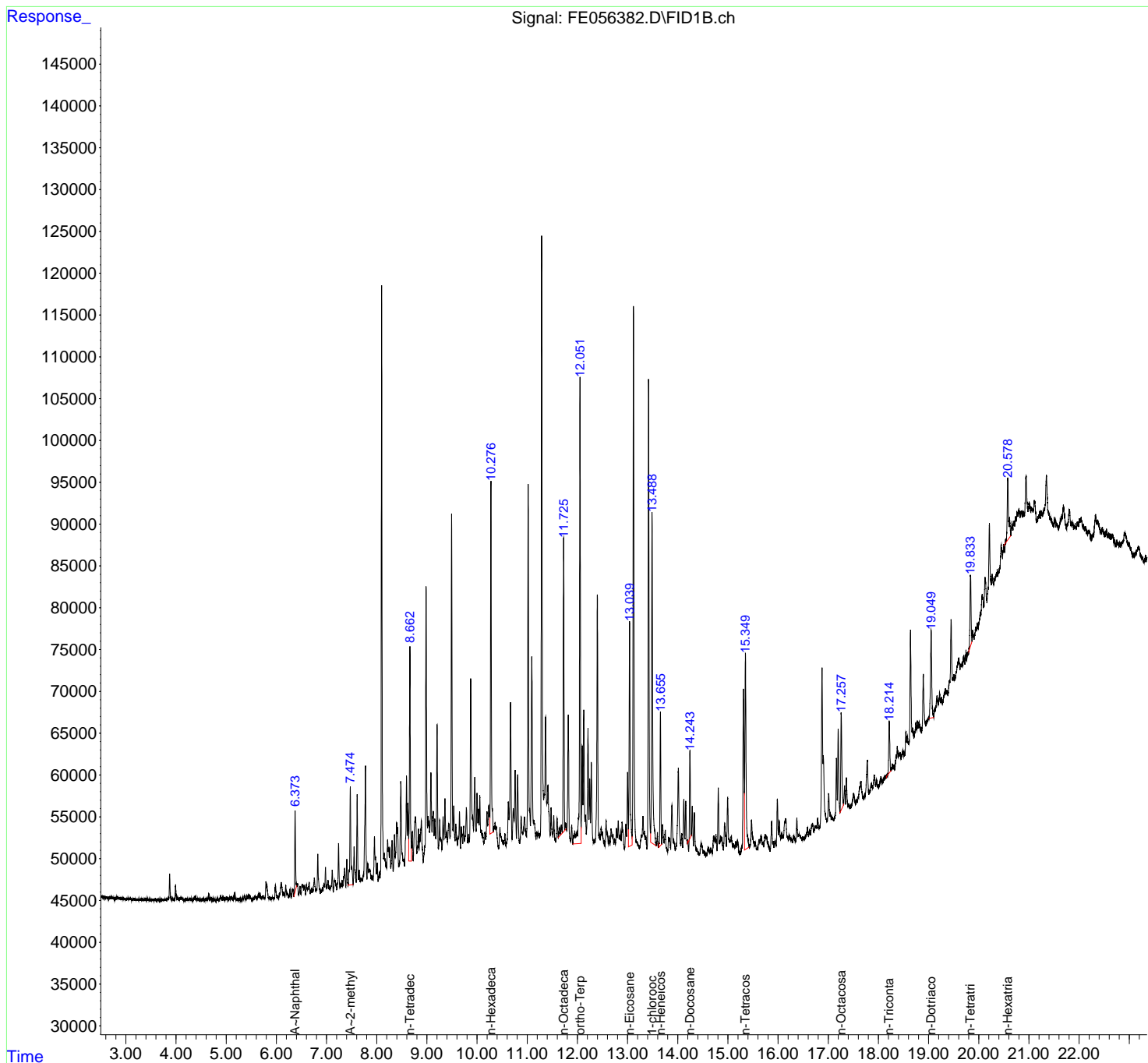
(m)=manual int.

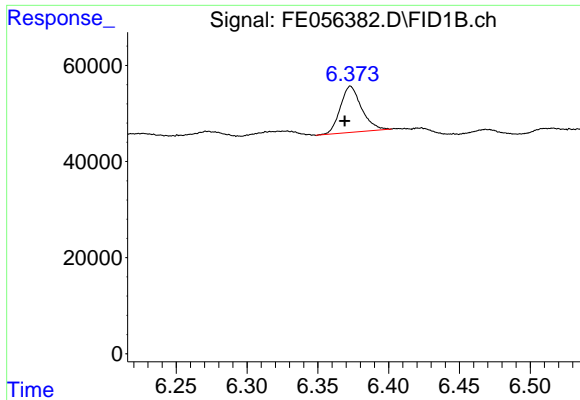
Data Path : Z:\pestpcbsrv\HPCHEM1\FID_E\Data\FE102025AL\
 Data File : FE056382.D
 Signal(s) : FID1B.ch
 Acq On : 20 Oct 2025 10:40
 Operator : YP\AJ
 Sample : Q3366-02DL 10X
 Misc :
 ALS Vial : 12 Sample Multiplier: 1

Instrument :
 FID_F
 ClientSampleId :
 TR-06-101625-E2

Integration File: autoint1.e
 Quant Time: Oct 21 02:51:25 2025
 Quant Method : Z:\pestpcbsrv\HPCHEM1\FID_E\methods\Aliphatic EPH 101725.M
 Quant Title : GC Extractables
 QLast Update : Fri Oct 17 08:31:49 2025
 Response via : Initial Calibration
 Integrator: ChemStation

Volume Inj. : 1 ul
 Signal Phase : Rxi-1ms
 Signal Info : 20M x 0.18mm x 0.18um

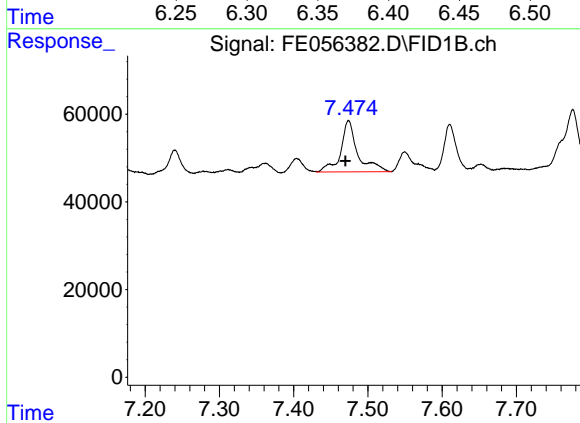




#3 A~Naphthalene (C11.7)

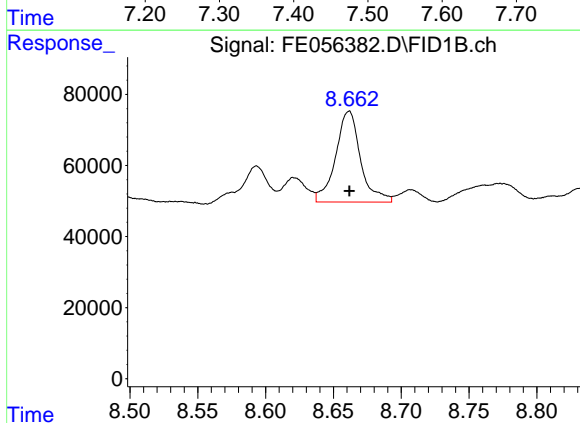
R.T.: 6.373 min
 Delta R.T.: 0.004 min
 Response: 100318
 Conc: 0.57 ug/ml

Instrument :
 FID_F
 ClientSampleId :
 TR-06-101625-E2



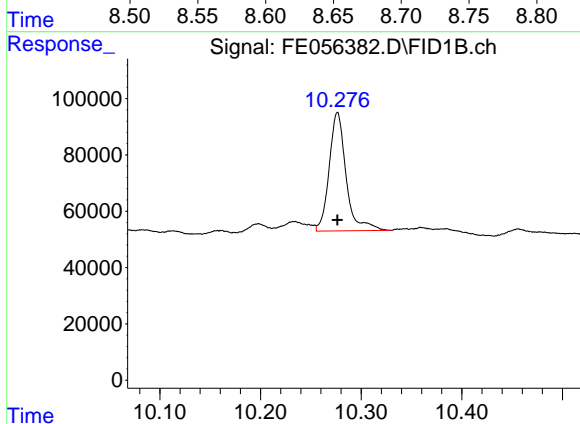
#5 A~2-methylnaphthalene (C12.89)

R.T.: 7.474 min
 Delta R.T.: 0.004 min
 Response: 184902
 Conc: 1.11 ug/ml



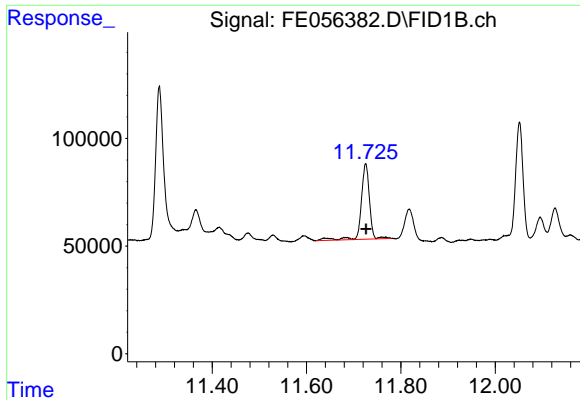
#6 n-Tetradecane (C14)

R.T.: 8.661 min
 Delta R.T.: 0.000 min
 Response: 328249
 Conc: 1.98 ug/ml



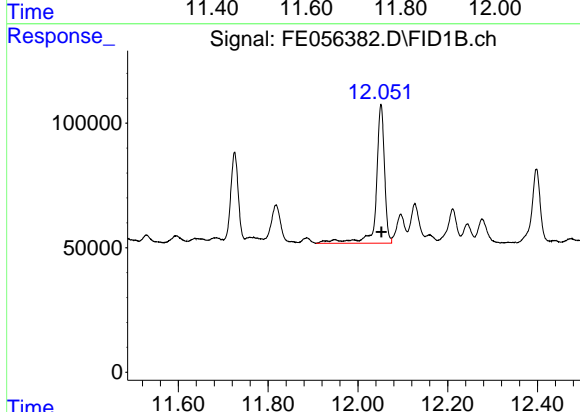
#7 n-Hexadecane (C16)

R.T.: 10.276 min
 Delta R.T.: 0.000 min
 Response: 491459
 Conc: 2.81 ug/ml

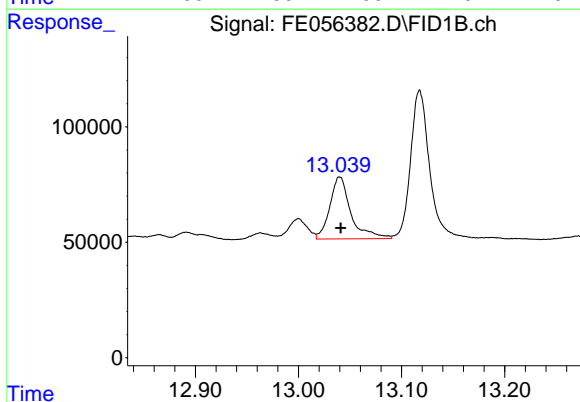


#8 n-Octadecane (C18)
 R.T.: 11.725 min
 Delta R.T.: -0.001 min
 Response: 428833
 Conc: 2.35 ug/ml

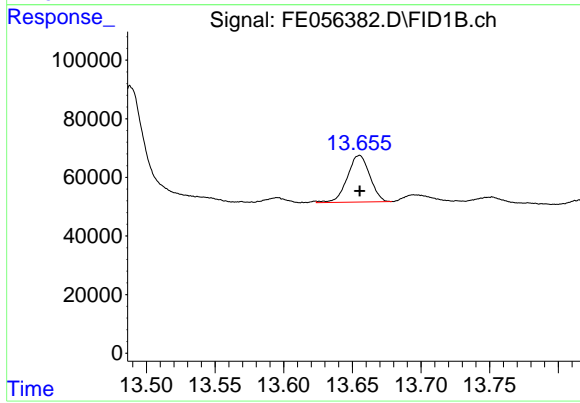
Instrument : FID_F
 ClientSampleId : TR-06-101625-E2



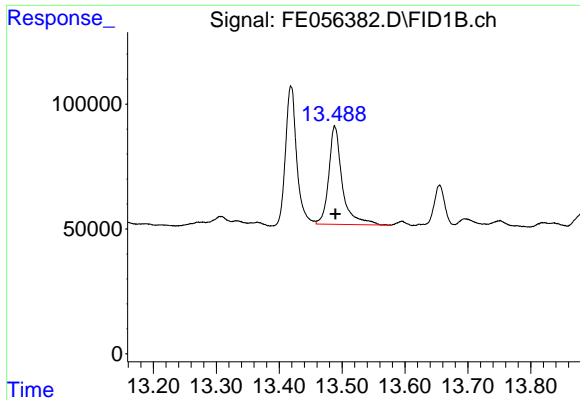
#9 ortho-Terphenyl (SURR)
 R.T.: 12.052 min
 Delta R.T.: 0.000 min
 Response: 720708
 Conc: 3.53 ug/ml



#10 n-Eicosane (C20)
 R.T.: 13.040 min
 Delta R.T.: 0.000 min
 Response: 382088
 Conc: 2.15 ug/ml



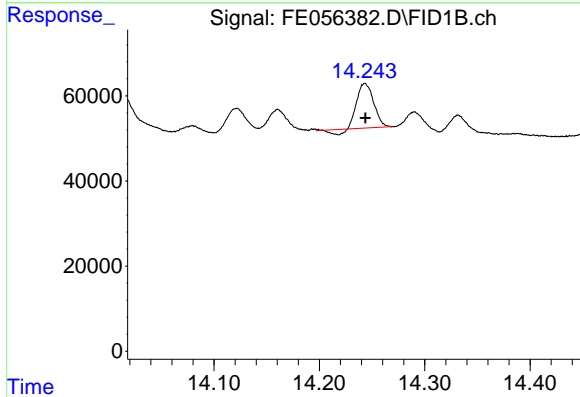
#11 n-Heneicosane (C21)
 R.T.: 13.655 min
 Delta R.T.: 0.000 min
 Response: 181699
 Conc: 1.04 ug/ml



#12 1-chlorooctadecane (SURR)

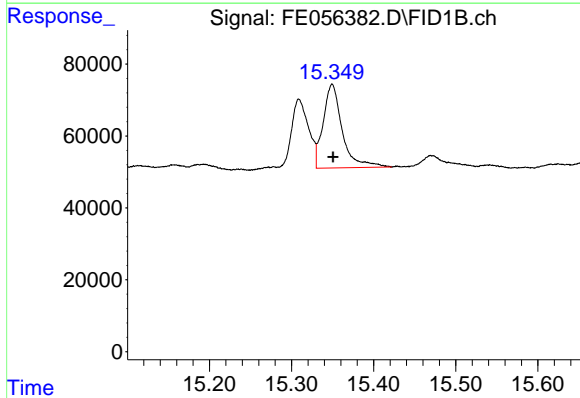
R.T.: 13.489 min
 Delta R.T.: 0.000 min
 Response: 587556
 Conc: 3.85 ug/ml

Instrument :
 FID_F
 ClientSampleId :
 TR-06-101625-E2



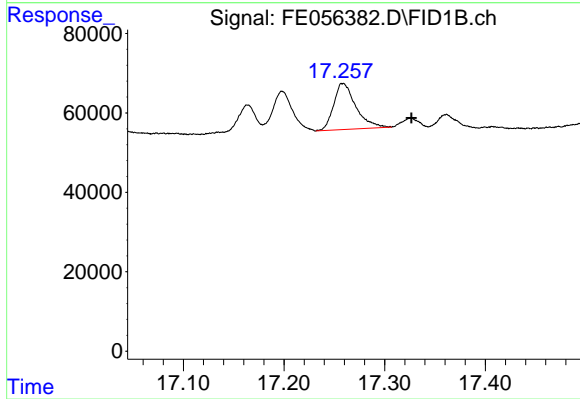
#13 n-Docosane (C22)

R.T.: 14.243 min
 Delta R.T.: 0.000 min
 Response: 109166
 Conc: 0.62 ug/ml



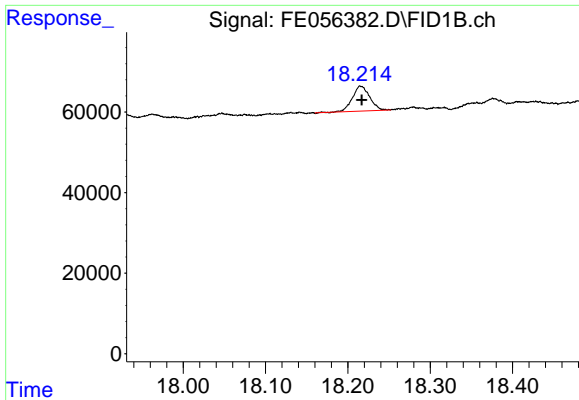
#14 n-Tetracosane (C24)

R.T.: 15.349 min
 Delta R.T.: -0.001 min
 Response: 377298
 Conc: 2.07 ug/ml



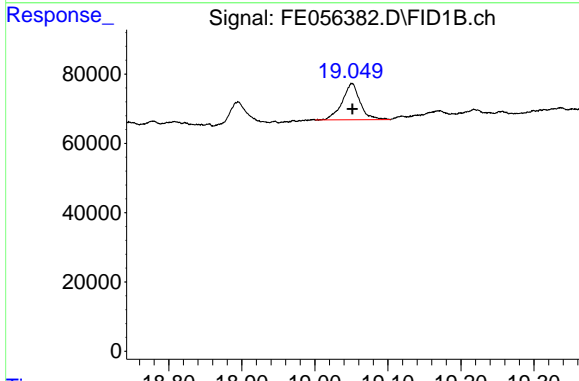
#16 n-Octacosane (C28)

R.T.: 17.259 min
 Delta R.T.: -0.068 min
 Response: 176317
 Conc: 0.99 ug/ml

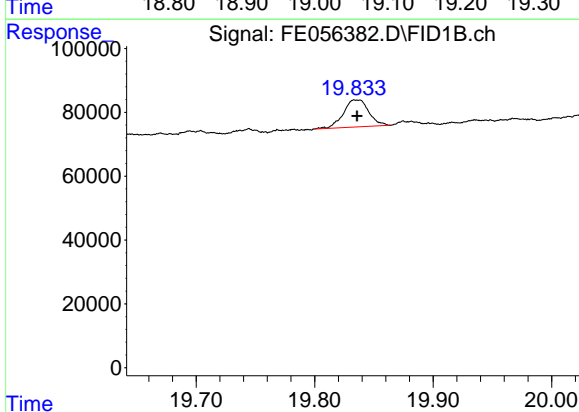


#17 n-Tricontane (C30)
 R.T.: 18.216 min
 Delta R.T.: 0.000 min
 Response: 89657
 Conc: 0.49 ug/ml

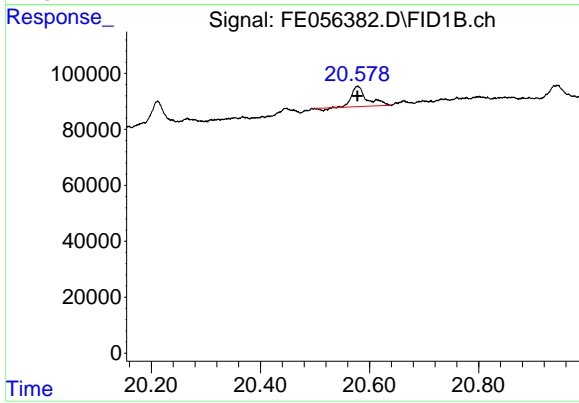
Instrument :
 FID_F
 ClientSampleId :
 TR-06-101625-E2



#18 n-Dotriacontane (C32)
 R.T.: 19.051 min
 Delta R.T.: 0.000 min
 Response: 178022
 Conc: 1.01 ug/ml



#19 n-Tetratriacontane (C34)
 R.T.: 19.836 min
 Delta R.T.: 0.000 min
 Response: 125753
 Conc: 0.81 ug/ml



#20 n-Hexatriacontane (C36)
 R.T.: 20.578 min
 Delta R.T.: 0.000 min
 Response: 136558
 Conc: 1.09 ug/ml