

Data Path : Z:\pestpcbsrv\HPCHEM1\FID_E\Data\FE102025AL\
 Data File : FE056383.D
 Signal(s) : FID1B.ch
 Acq On : 20 Oct 2025 11:10
 Operator : YP\AJ
 Sample : Q3366-03DL 10X
 Misc :
 ALS Vial : 13 Sample Multiplier: 1

Instrument :
 FID_F
 ClientSampleId :
 TR-1-101625

Integration File: autoint1.e
 Quant Time: Oct 21 02:51:48 2025
 Quant Method : Z:\pestpcbsrv\HPCHEM1\FID_E\methods\Aliphatic EPH 101725.M
 Quant Title : GC Extractables
 QLast Update : Fri Oct 17 08:31:49 2025
 Response via : Initial Calibration
 Integrator: ChemStation

Volume Inj. : 1 ul
 Signal Phase : Rxi-1ms
 Signal Info : 20M x 0.18mm x 0.18um

Compound	R.T.	Response	Conc Units

System Monitoring Compounds			
9) S ortho-Terphenyl (SURR)	12.051	598179	2.928 ug/ml
Spiked Amount	50.000	Recovery =	5.86%
12) S 1-chlorooctadecane (S...	13.489	536436	3.516 ug/ml
Spiked Amount	50.000	Recovery =	7.03%
Target Compounds			
4) T n-Dodecane (C12)	6.826	94308	0.562 ug/ml
5) T A~2-methylnaphthalene...	7.475	81351	0.488 ug/ml
6) T n-Tetradecane (C14)	8.661	191529	1.153 ug/ml
7) T n-Hexadecane (C16)	10.277	267047	1.526 ug/ml
8) T n-Octadecane (C18)	11.725	230624	1.264 ug/ml
10) T n-Eicosane (C20)	13.040	236939	1.331 ug/ml
11) T n-Heneicosane (C21)	13.655	107391	0.612 ug/ml
14) T n-Tetracosane (C24)	15.350	268016	1.473 ug/ml
16) T n-Octacosane (C28)	17.261f	118834	0.668 ug/ml

(f)=RT Delta > 1/2 Window

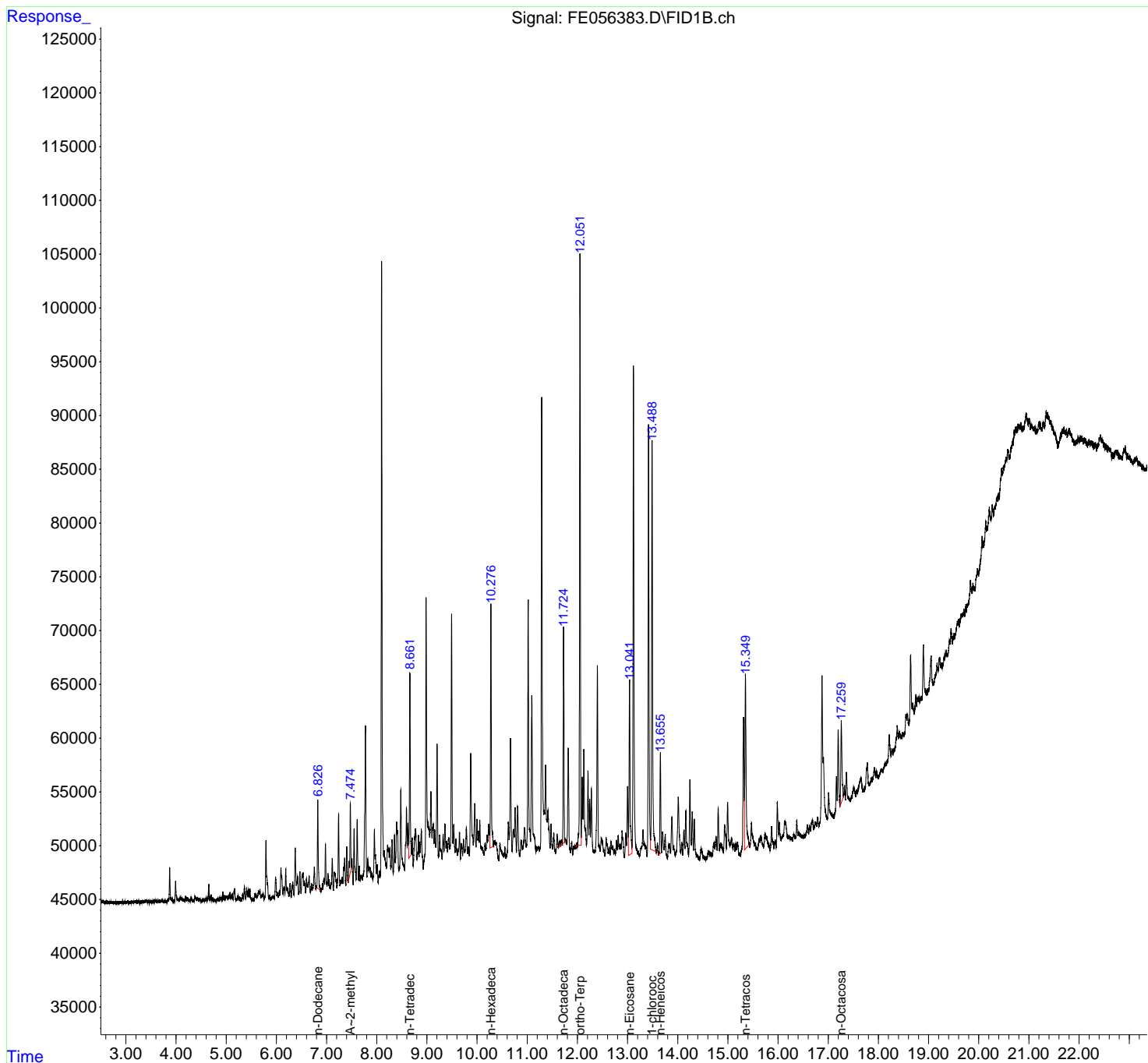
(m)=manual int.

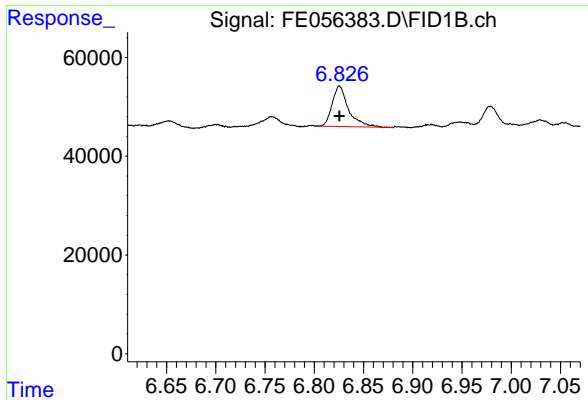
Data Path : Z:\pestpcbsrv\HPCHEM1\FID_E\Data\FE102025AL\
 Data File : FE056383.D
 Signal(s) : FID1B.ch
 Acq On : 20 Oct 2025 11:10
 Operator : YP\AJ
 Sample : Q3366-03DL 10X
 Misc :
 ALS Vial : 13 Sample Multiplier: 1

Instrument :
 FID_F
 ClientSampleId :
 TR-1-101625

Integration File: autoint1.e
 Quant Time: Oct 21 02:51:48 2025
 Quant Method : Z:\pestpcbsrv\HPCHEM1\FID_E\methods\Aliphatic EPH 101725.M
 Quant Title : GC Extractables
 QLast Update : Fri Oct 17 08:31:49 2025
 Response via : Initial Calibration
 Integrator: ChemStation

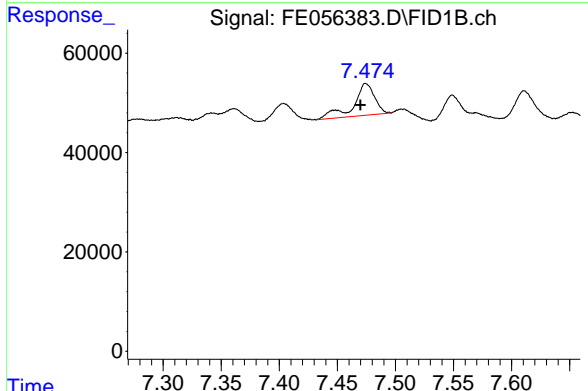
Volume Inj. : 1 ul
 Signal Phase : Rxi-1ms
 Signal Info : 20M x 0.18mm x 0.18um



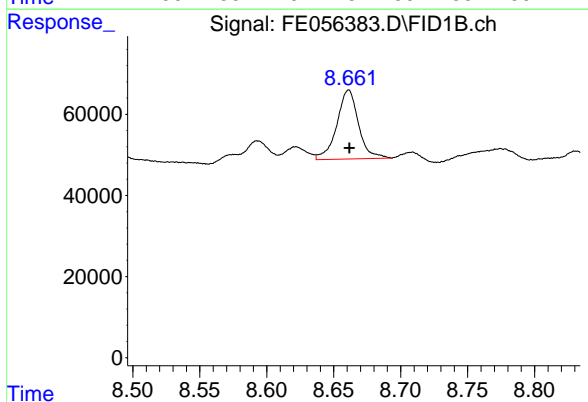


#4 n-Dodecane (C12)
 R.T.: 6.826 min
 Delta R.T.: 0.000 min
 Response: 94308
 Conc: 0.56 ug/ml

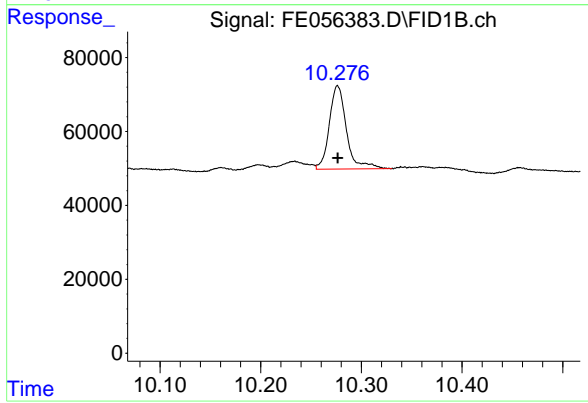
Instrument :
 FID_F
 ClientSampleId :
 TR-1-101625



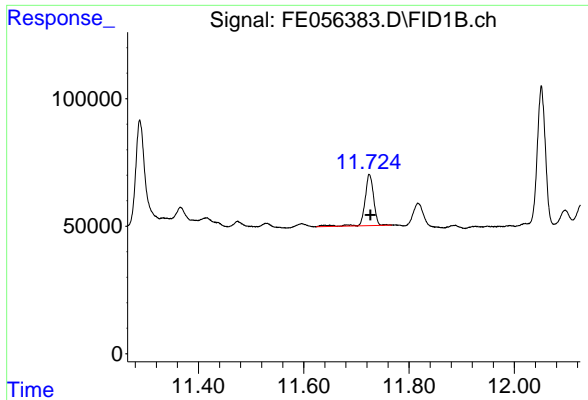
#5 A~2-methylnaphthalene (C12.89)
 R.T.: 7.475 min
 Delta R.T.: 0.005 min
 Response: 81351
 Conc: 0.49 ug/ml



#6 n-Tetradecane (C14)
 R.T.: 8.661 min
 Delta R.T.: 0.000 min
 Response: 191529
 Conc: 1.15 ug/ml

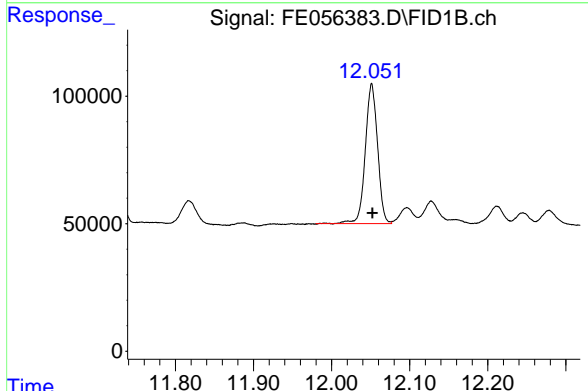


#7 n-Hexadecane (C16)
 R.T.: 10.277 min
 Delta R.T.: 0.000 min
 Response: 267047
 Conc: 1.53 ug/ml

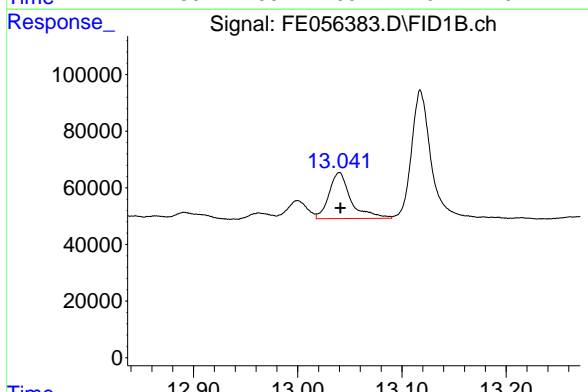


#8 n-Octadecane (C18)
 R.T.: 11.725 min
 Delta R.T.: -0.002 min
 Response: 230624
 Conc: 1.26 ug/ml

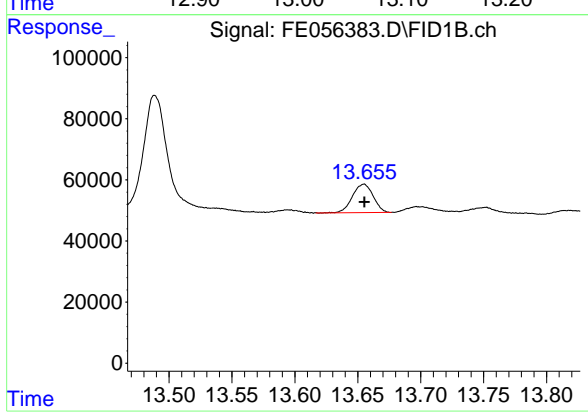
Instrument : FID_F
 ClientSampleId : TR-1-101625



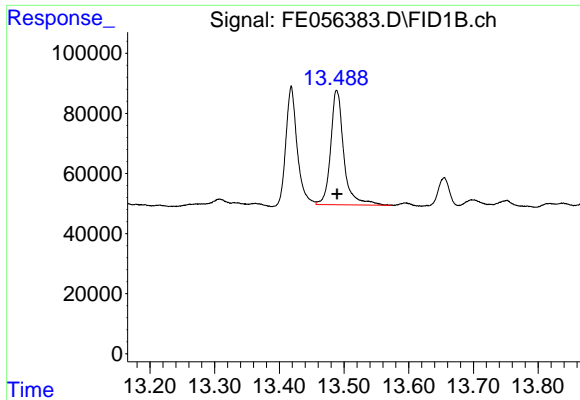
#9 ortho-Terphenyl (SURRE)
 R.T.: 12.051 min
 Delta R.T.: 0.000 min
 Response: 598179
 Conc: 2.93 ug/ml



#10 n-Eicosane (C20)
 R.T.: 13.040 min
 Delta R.T.: -0.001 min
 Response: 236939
 Conc: 1.33 ug/ml



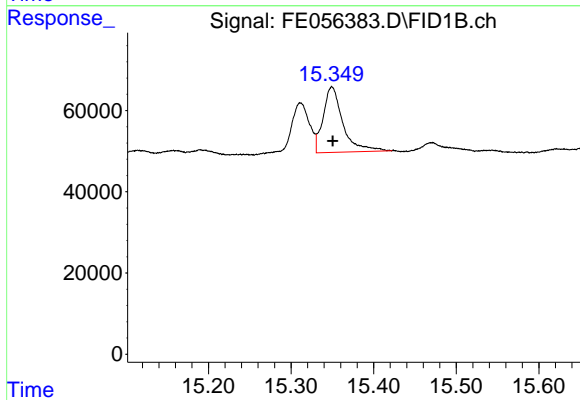
#11 n-Heneicosane (C21)
 R.T.: 13.655 min
 Delta R.T.: 0.000 min
 Response: 107391
 Conc: 0.61 ug/ml



#12 1-chlorooctadecane (SURR)

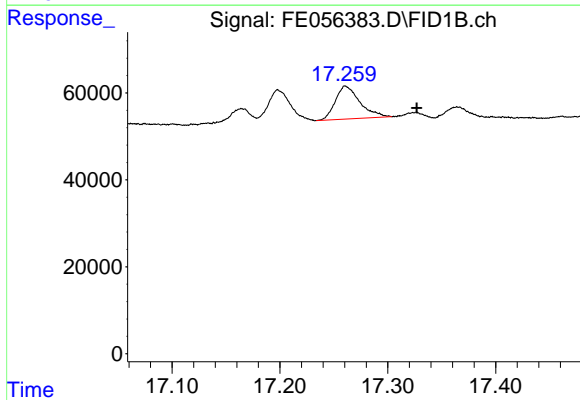
R.T.: 13.489 min
 Delta R.T.: 0.000 min
 Response: 536436
 Conc: 3.52 ug/ml

Instrument :
 FID_F
 ClientSampleId :
 TR-1-101625



#14 n-Tetracosane (C24)

R.T.: 15.350 min
 Delta R.T.: 0.000 min
 Response: 268016
 Conc: 1.47 ug/ml



#16 n-Octacosane (C28)

R.T.: 17.261 min
 Delta R.T.: -0.065 min
 Response: 118834
 Conc: 0.67 ug/ml