

Data Path : Z:\pestpcbsrv\HPCHEM1\FID_E\Data\FE102025AL\
 Data File : FE056384.D
 Signal(s) : FID1B.ch
 Acq On : 20 Oct 2025 11:40
 Operator : YP\AJ
 Sample : Q3366-04DL 5X
 Misc :
 ALS Vial : 14 Sample Multiplier: 1

Instrument :
 FID_F
 ClientSampleId :
 TR-01-101625-E2

Integration File: autoint1.e
 Quant Time: Oct 21 02:52:10 2025
 Quant Method : Z:\pestpcbsrv\HPCHEM1\FID_E\methods\Aliphatic EPH 101725.M
 Quant Title : GC Extractables
 QLast Update : Fri Oct 17 08:31:49 2025
 Response via : Initial Calibration
 Integrator: ChemStation

Volume Inj. : 1 ul
 Signal Phase : Rxi-1ms
 Signal Info : 20M x 0.18mm x 0.18um

Compound	R.T.	Response	Conc Units

System Monitoring Compounds			
9) S ortho-Terphenyl (SURR)	12.051	1909463	9.347 ug/ml
Spiked Amount	50.000	Recovery =	18.69%
12) S 1-chlorooctadecane (S...	13.489	1451600	9.514 ug/ml
Spiked Amount	50.000	Recovery =	19.03%

Target Compounds

(f)=RT Delta > 1/2 Window

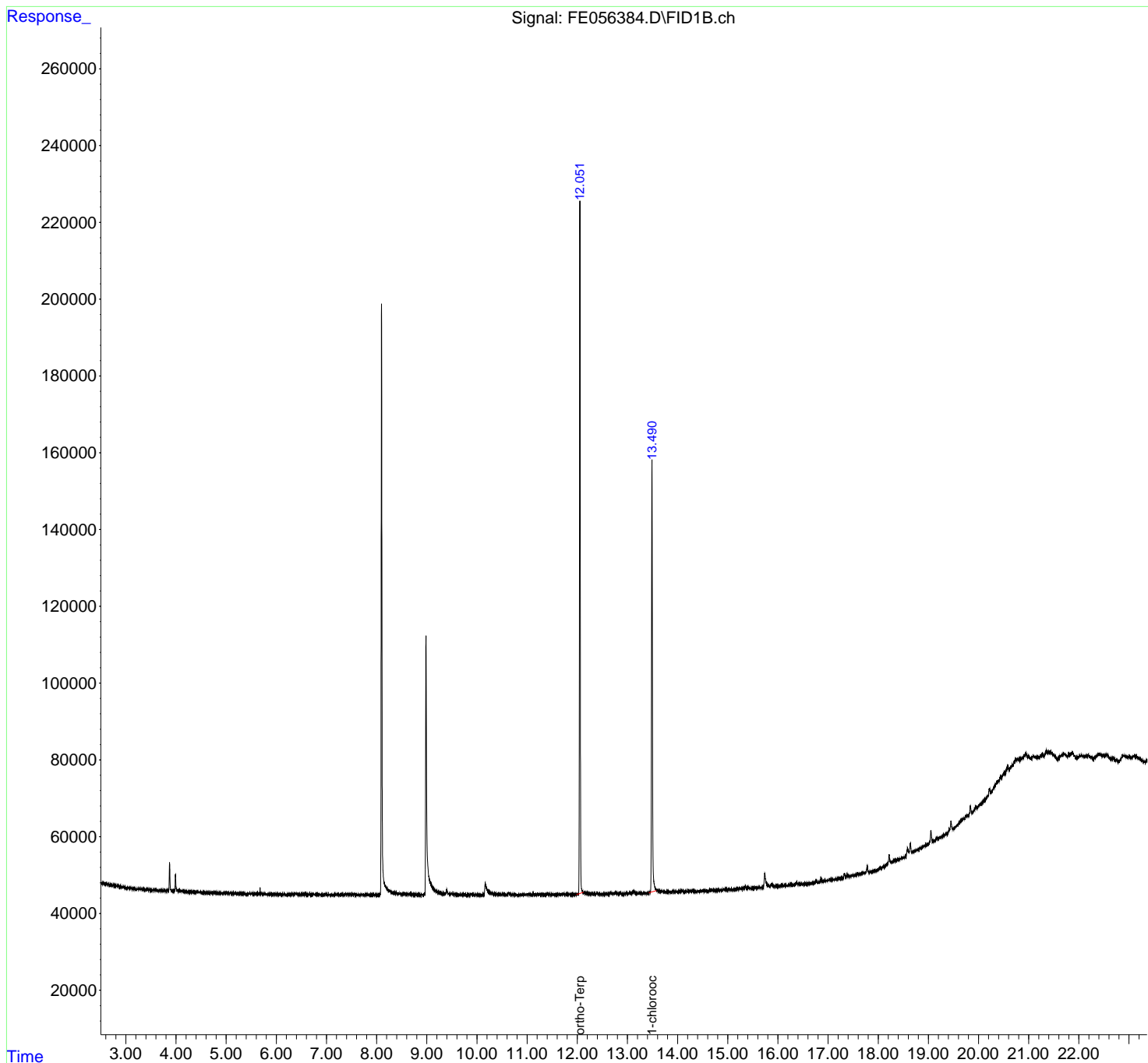
(m)=manual int.

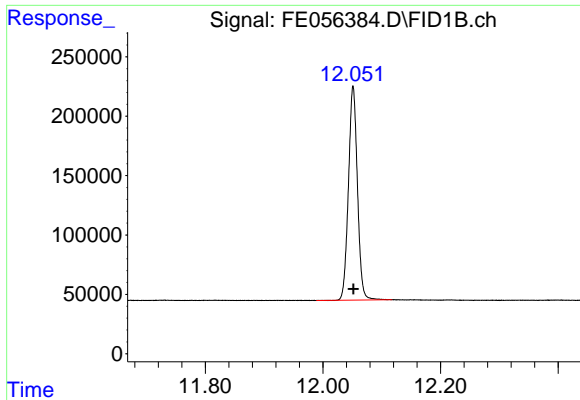
Data Path : Z:\pestpcbsrv\HPCHEM1\FID_E\Data\FE102025AL\
 Data File : FE056384.D
 Signal(s) : FID1B.ch
 Acq On : 20 Oct 2025 11:40
 Operator : YP\AJ
 Sample : Q3366-04DL 5X
 Misc :
 ALS Vial : 14 Sample Multiplier: 1

Instrument :
 FID_F
 ClientSampleId :
 TR-01-101625-E2

Integration File: autoint1.e
 Quant Time: Oct 21 02:52:10 2025
 Quant Method : Z:\pestpcbsrv\HPCHEM1\FID_E\methods\Aliphatic EPH 101725.M
 Quant Title : GC Extractables
 QLast Update : Fri Oct 17 08:31:49 2025
 Response via : Initial Calibration
 Integrator: ChemStation

Volume Inj. : 1 ul
 Signal Phase : Rxi-1ms
 Signal Info : 20M x 0.18mm x 0.18um

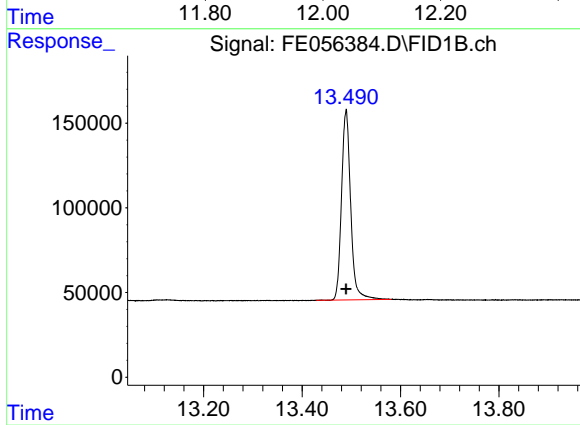




#9 ortho-Terphenyl (SURR)

R.T.: 12.051 min
Delta R.T.: 0.000 min
Response: 1909463
Conc: 9.35 ug/ml

Instrument :
FID_F
ClientSampleId :
TR-01-101625-E2



#12 1-chlorooctadecane (SURR)

R.T.: 13.489 min
Delta R.T.: 0.000 min
Response: 1451600
Conc: 9.51 ug/ml