

Data Path : Z:\pestpcbsrv\HPCHEM1\FID_E\Data\FE102025AL\
 Data File : FE056386.D
 Signal(s) : FID1B.ch
 Acq On : 20 Oct 2025 13:11
 Operator : YP\AJ
 Sample : 20 PPM ALIPHATIC HC STD
 Misc :
 ALS Vial : 4 Sample Multiplier: 1

Instrument :
 FID_F
 ClientSampleId :
 20 PPM ALIPHATIC HC STD

Integration File: autoint1.e
 Quant Time: Oct 21 02:52:46 2025
 Quant Method : Z:\pestpcbsrv\HPCHEM1\FID_E\methods\Aliphatic EPH 101725.M
 Quant Title : GC Extractables
 QLast Update : Fri Oct 17 08:31:49 2025
 Response via : Initial Calibration
 Integrator: ChemStation

Volume Inj. : 1 ul
 Signal Phase : Rxi-1ms
 Signal Info : 20M x 0.18mm x 0.18um

Compound	R.T.	Response	Conc Units

System Monitoring Compounds			
9) S ortho-Terphenyl (SURR)	12.053	4218090	20.647 ug/ml
Spiked Amount	50.000	Recovery =	41.29%
12) S 1-chlorooctadecane (S...	13.489	3154064	20.671 ug/ml
Spiked Amount	50.000	Recovery =	41.34%
Target Compounds			
1) T n-Nonane (C9)	3.398	3350806	20.557 ug/ml
2) T n-Decane (C10)	4.652	3545810	21.561 ug/ml
3) T A~Naphthalene (C11.7)	6.369	3771637	21.335 ug/ml
4) T n-Dodecane (C12)	6.825	3646865	21.736 ug/ml
5) T A~2-methylnaphthalene...	7.470	3617783	21.712 ug/ml
6) T n-Tetradecane (C14)	8.662	3623025	21.808 ug/ml
7) T n-Hexadecane (C16)	10.276	3750978	21.439 ug/ml
8) T n-Octadecane (C18)	11.726	3830874	21.001 ug/ml
10) T n-Eicosane (C20)	13.041	3670534	20.615 ug/ml
11) T n-Heneicosane (C21)	13.655	3595086	20.491 ug/ml
13) T n-Docosane (C22)	14.244	3599404	20.334 ug/ml
14) T n-Tetracosane (C24)	15.350	3575967	19.655 ug/ml
15) T n-Hexacosane (C26)	16.375	3492945	19.458 ug/ml
16) T n-Octacosane (C28)	17.328	3411282	19.176 ug/ml
17) T n-Tricontane (C30)	18.217	3545483	19.528 ug/ml
18) T n-Dotriacontane (C32)	19.053	3516885	19.948 ug/ml
19) T n-Tetratriacontane (C34)	19.837	3182544	20.559 ug/ml
20) T n-Hexatriacontane (C36)	20.578	2785092	22.293 ug/ml
21) T n-Octatriacontane (C38)	21.349	2414547	23.110 ug/ml
22) T n-Tetracontane (C40)	22.324	2324848	25.620 ug/ml

(f)=RT Delta > 1/2 Window

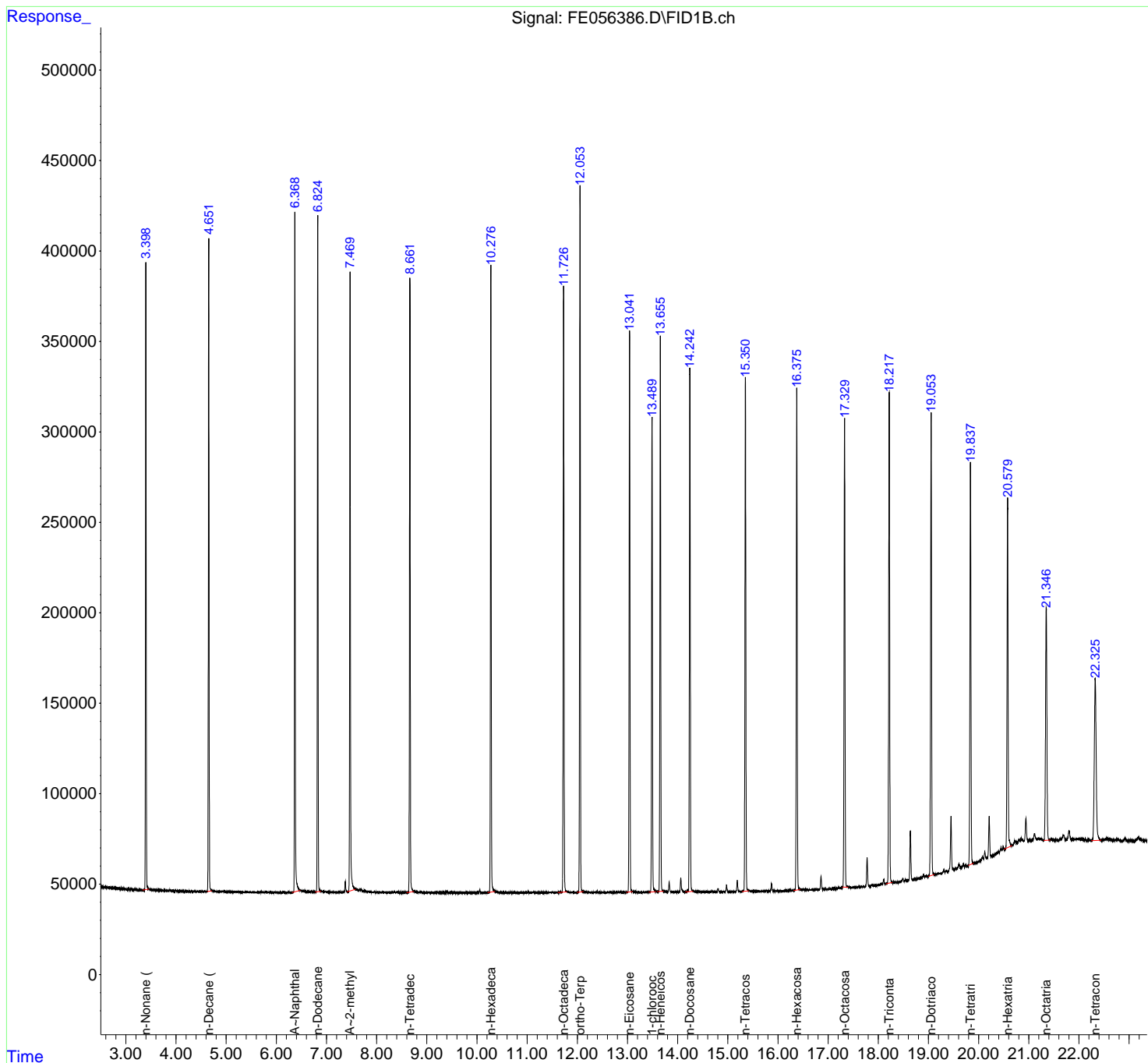
(m)=manual int.

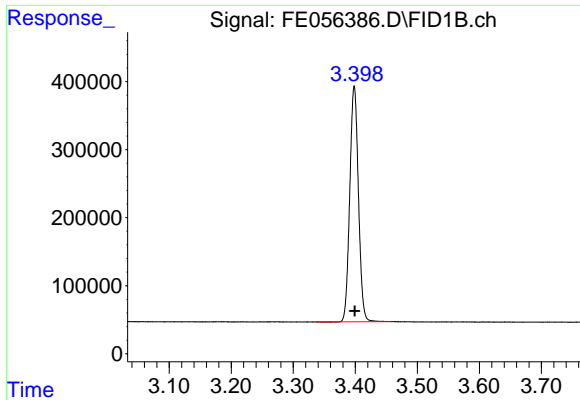
Data Path : Z:\pestpcbsrv\HPCHEM1\FID_E\Data\FE102025AL\
 Data File : FE056386.D
 Signal(s) : FID1B.ch
 Acq On : 20 Oct 2025 13:11
 Operator : YP\AJ
 Sample : 20 PPM ALIPHATIC HC STD
 Misc :
 ALS Vial : 4 Sample Multiplier: 1

Instrument :
 FID_F
 ClientSampleId :
 20 PPM ALIPHATIC HC STD

Integration File: autoint1.e
 Quant Time: Oct 21 02:52:46 2025
 Quant Method : Z:\pestpcbsrv\HPCHEM1\FID_E\methods\Aliphatic EPH 101725.M
 Quant Title : GC Extractables
 QLast Update : Fri Oct 17 08:31:49 2025
 Response via : Initial Calibration
 Integrator: ChemStation

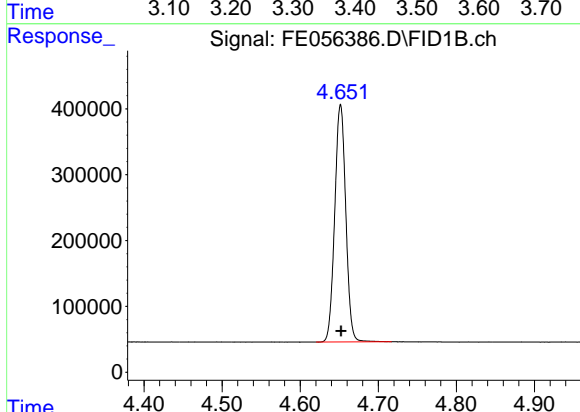
Volume Inj. : 1 ul
 Signal Phase : Rxi-1ms
 Signal Info : 20M x 0.18mm x 0.18um



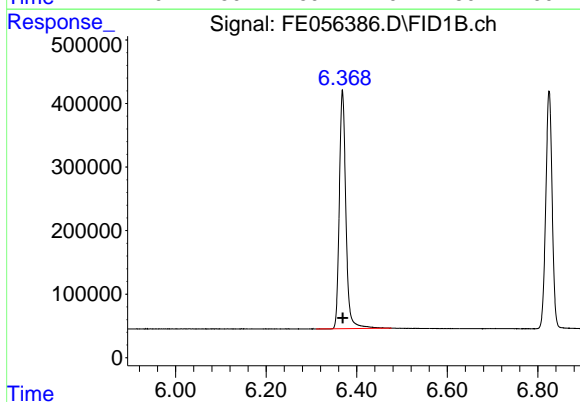


#1 n-Nonane (C9)
 R.T.: 3.398 min
 Delta R.T.: 0.000 min
 Response: 3350806
 Conc: 20.56 ug/ml

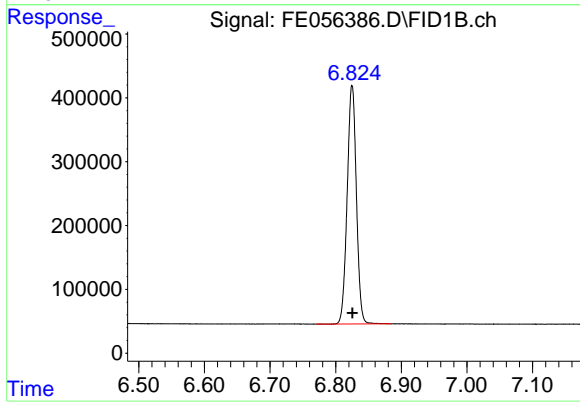
Instrument : FID_F
 ClientSampleId : 20 PPM ALIPHATIC HC STD



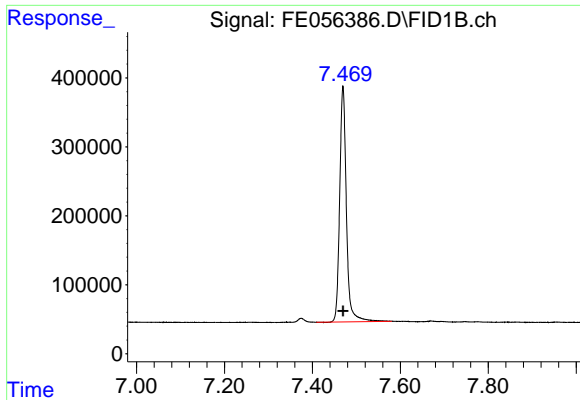
#2 n-Decane (C10)
 R.T.: 4.652 min
 Delta R.T.: 0.000 min
 Response: 3545810
 Conc: 21.56 ug/ml



#3 A~Naphthalene (C11.7)
 R.T.: 6.369 min
 Delta R.T.: 0.000 min
 Response: 3771637
 Conc: 21.34 ug/ml



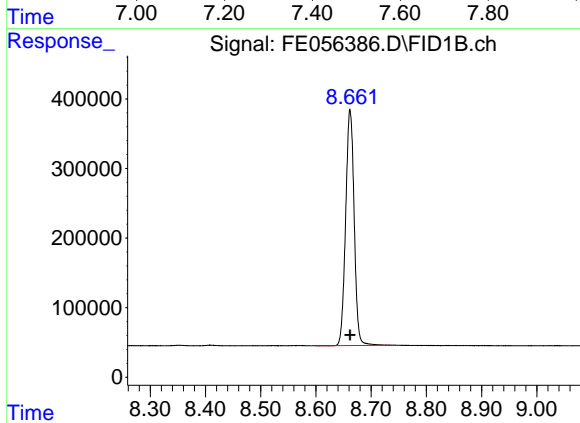
#4 n-Dodecane (C12)
 R.T.: 6.825 min
 Delta R.T.: 0.000 min
 Response: 3646865
 Conc: 21.74 ug/ml



#5 A~2-methylnaphthalene (C12.89)

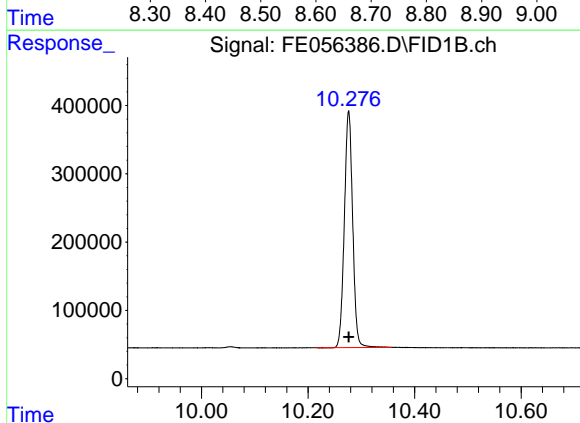
R.T.: 7.470 min
 Delta R.T.: 0.000 min
 Response: 3617783
 Conc: 21.71 ug/ml

Instrument : FID_F
 ClientSampleId : 20 PPM ALIPHATIC HC STD



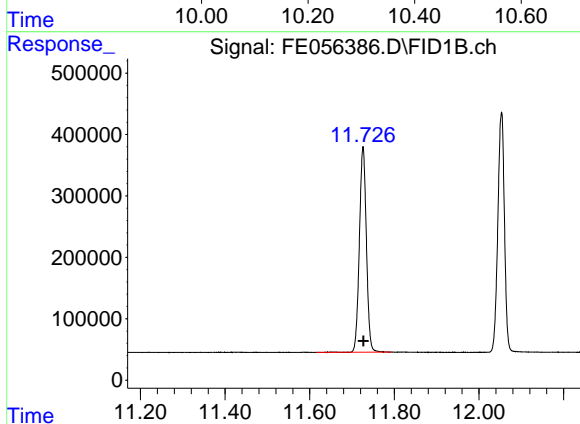
#6 n-Tetradecane (C14)

R.T.: 8.662 min
 Delta R.T.: 0.000 min
 Response: 3623025
 Conc: 21.81 ug/ml



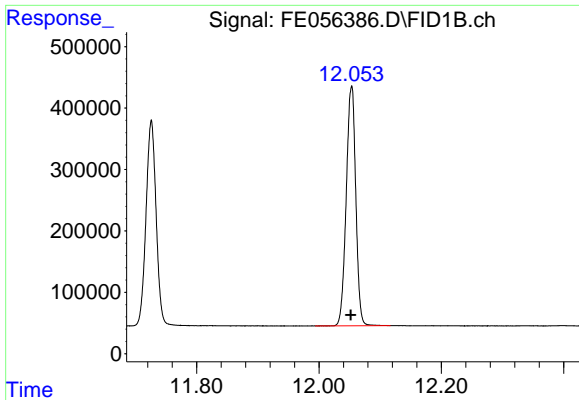
#7 n-Hexadecane (C16)

R.T.: 10.276 min
 Delta R.T.: 0.000 min
 Response: 3750978
 Conc: 21.44 ug/ml



#8 n-Octadecane (C18)

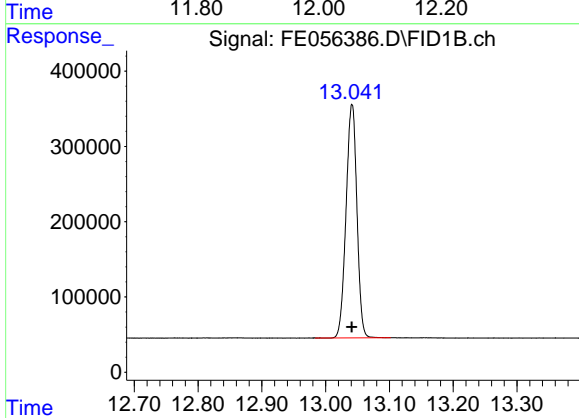
R.T.: 11.726 min
 Delta R.T.: 0.000 min
 Response: 3830874
 Conc: 21.00 ug/ml



#9 ortho-Terphenyl (SURR)

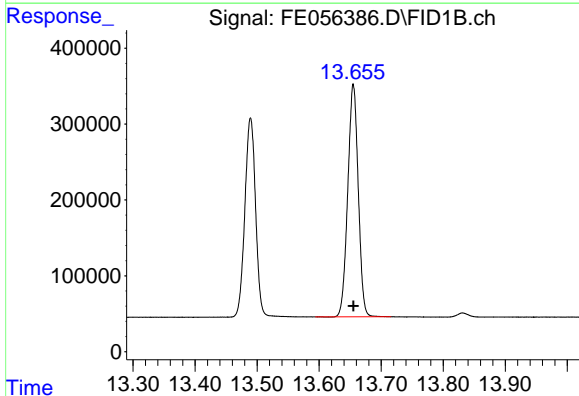
R.T.: 12.053 min
 Delta R.T.: 0.000 min
 Response: 4218090
 Conc: 20.65 ug/ml

Instrument :
 FID_F
 ClientSampleId :
 20 PPM ALIPHATIC HC STD



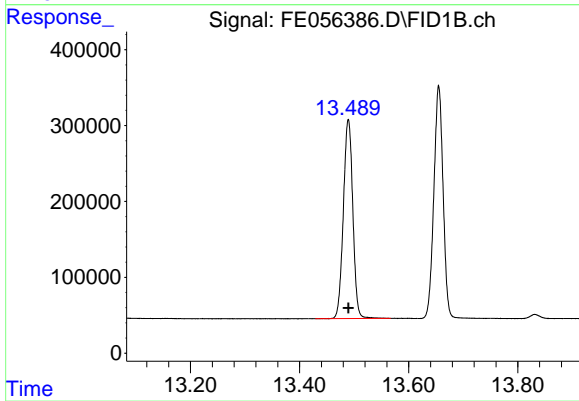
#10 n-Eicosane (C20)

R.T.: 13.041 min
 Delta R.T.: 0.000 min
 Response: 3670534
 Conc: 20.62 ug/ml



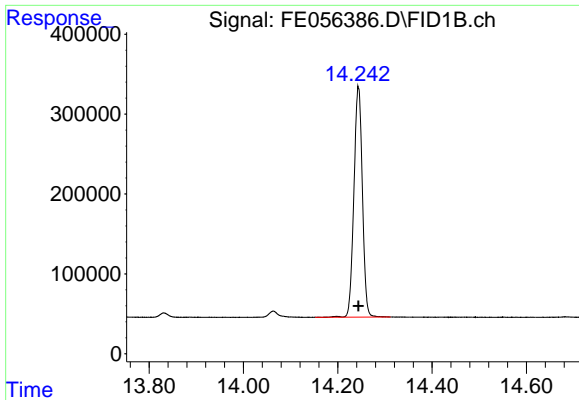
#11 n-Heneicosane (C21)

R.T.: 13.655 min
 Delta R.T.: 0.000 min
 Response: 3595086
 Conc: 20.49 ug/ml



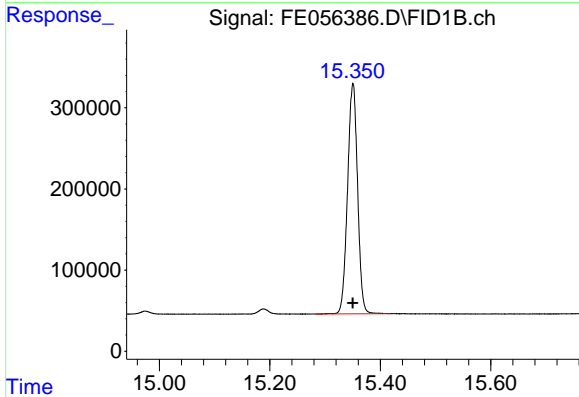
#12 1-chlorooctadecane (SURR)

R.T.: 13.489 min
 Delta R.T.: 0.000 min
 Response: 3154064
 Conc: 20.67 ug/ml

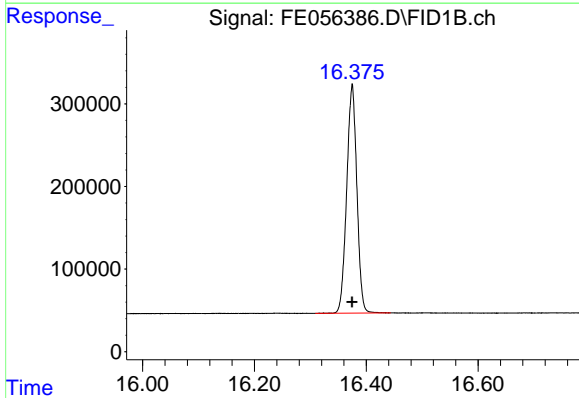


#13 n-Docosane (C22)
 R.T.: 14.244 min
 Delta R.T.: 0.000 min
 Response: 3599404
 Conc: 20.33 ug/ml

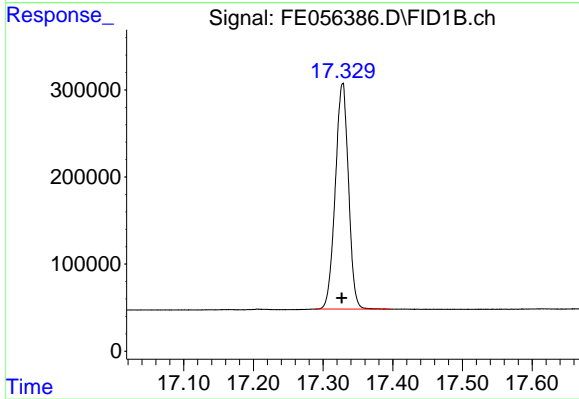
Instrument : FID_F
 ClientSampleId : 20 PPM ALIPHATIC HC STD



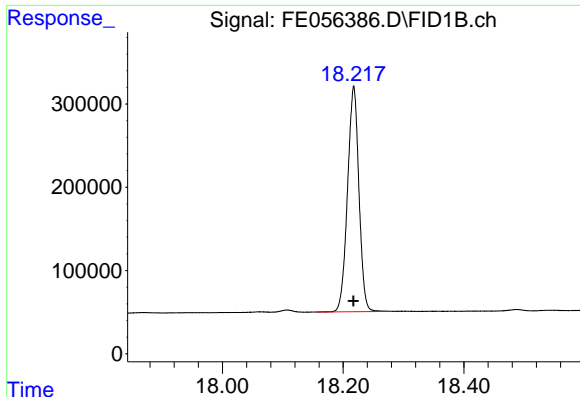
#14 n-Tetracosane (C24)
 R.T.: 15.350 min
 Delta R.T.: 0.000 min
 Response: 3575967
 Conc: 19.65 ug/ml



#15 n-Hexacosane (C26)
 R.T.: 16.375 min
 Delta R.T.: 0.000 min
 Response: 3492945
 Conc: 19.46 ug/ml



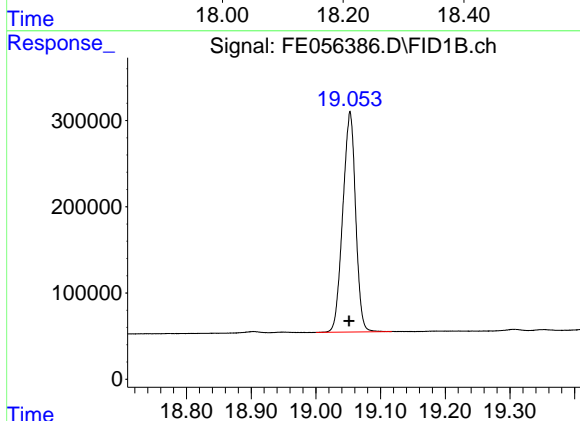
#16 n-Octacosane (C28)
 R.T.: 17.328 min
 Delta R.T.: 0.000 min
 Response: 3411282
 Conc: 19.18 ug/ml



#17 n-Tricontane (C30)

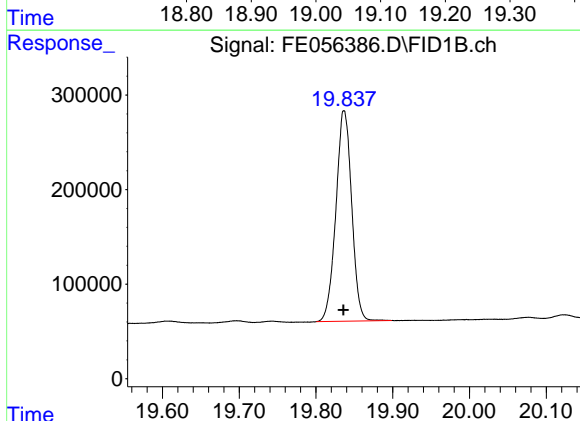
R.T.: 18.217 min
Delta R.T.: 0.000 min
Response: 3545483
Conc: 19.53 ug/ml

Instrument :
FID_F
ClientSampleId :
20 PPM ALIPHATIC HC STD



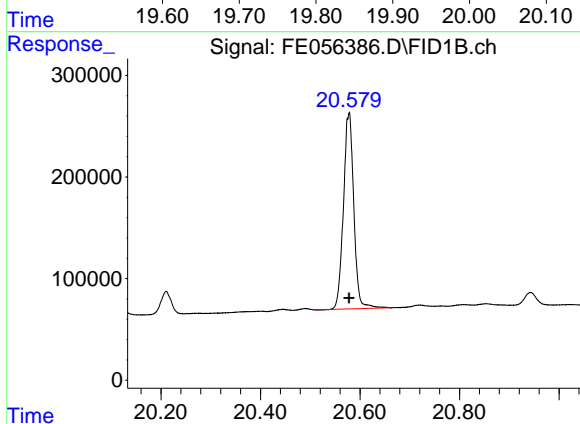
#18 n-Dotriacontane (C32)

R.T.: 19.053 min
Delta R.T.: 0.001 min
Response: 3516885
Conc: 19.95 ug/ml



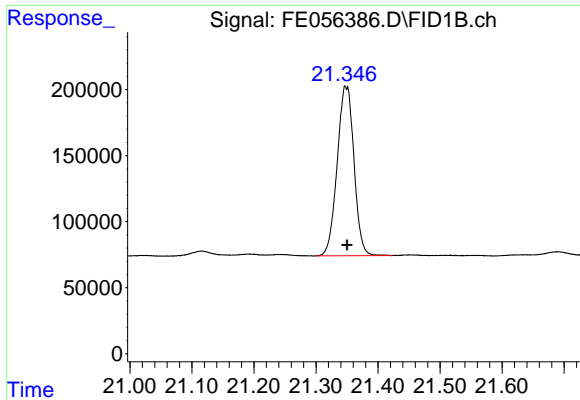
#19 n-Tetratriacontane (C34)

R.T.: 19.837 min
Delta R.T.: 0.000 min
Response: 3182544
Conc: 20.56 ug/ml



#20 n-Hexatriacontane (C36)

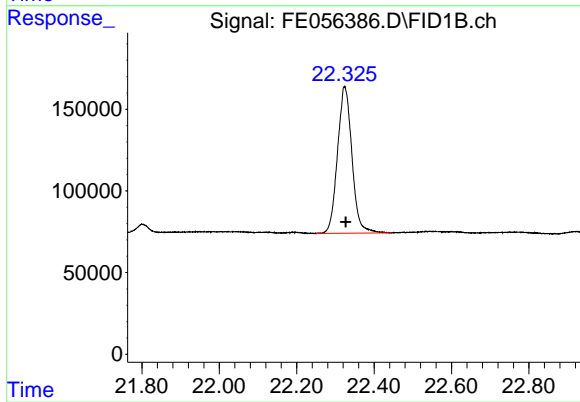
R.T.: 20.578 min
Delta R.T.: 0.000 min
Response: 2785092
Conc: 22.29 ug/ml



#21 n-Octatriacontane (C38)

R.T.: 21.349 min
Delta R.T.: -0.001 min
Response: 2414547
Conc: 23.11 ug/ml

Instrument :
FID_F
ClientSampleId :
20 PPM ALIPHATIC HC STD



#22 n-Tetracontane (C40)

R.T.: 22.324 min
Delta R.T.: -0.003 min
Response: 2324848
Conc: 25.62 ug/ml