

Data Path : Z:\pestpcbsrv\HPCHEM1\FID_F\Data\FF102025AL\
 Data File : FF016568.D
 Signal(s) : FID2B.ch
 Acq On : 20 Oct 2025 13:46
 Operator : YP\AJ
 Sample : 20 PPM ALIPHATIC HC STD
 Misc :
 ALS Vial : 12 Sample Multiplier: 1

Instrument :
 FID_F
 ClientSampleId :
 20 PPM ALIPHATIC HC STD

Integration File: autoint1.e
 Quant Time: Oct 20 23:18:39 2025
 Quant Method : Z:\pestpcbsrv\HPCHEM1\FID_F\Method\Aliphatic EPH 100225.M
 Quant Title : GC Extractables
 QLast Update : Fri Oct 03 05:49:41 2025
 Response via : Initial Calibration
 Integrator: ChemStation

Volume Inj. : 1 ul
 Signal Phase : Rxi-1ms
 Signal Info : 20M x 0.18mm x 0.18um

Compound	R.T.	Response	Conc Units

System Monitoring Compounds			
9) S ortho-Terphenyl (SURR)	11.970	2626426	18.160 ug/ml
Spiked Amount	50.000	Recovery	= 36.32%
12) S 1-chlorooctadecane (S...	13.412	1981100	17.761 ug/ml
Spiked Amount	50.000	Recovery	= 35.52%
Target Compounds			
1) T n-Nonane (C9)	3.320	2149569	18.386 ug/ml
2) T n-Decane (C10)	4.582	2222208	18.761 ug/ml
3) T A~Naphthalene (C11.7)	6.294	2342376	17.935 ug/ml
4) T n-Dodecane (C12)	6.761	2256062	18.795 ug/ml
5) T A~2-methylnaphthalene...	7.395	2246996	17.648 ug/ml
6) T n-Tetradecane (C14)	8.594	2246511	18.643 ug/ml
7) T n-Hexadecane (C16)	10.204	2345393	18.780 ug/ml
8) T n-Octadecane (C18)	11.652	2416670	18.657 ug/ml
10) T n-Eicosane (C20)	12.965	2366254	18.505 ug/ml
11) T n-Heneicosane (C21)	13.579	2316612	18.246 ug/ml
13) T n-Docosane (C22)	14.167	2359875	18.587 ug/ml
14) T n-Tetracosane (C24)	15.274	2445949	19.121 ug/ml
15) T n-Hexacosane (C26)	16.299	2412799	19.301 ug/ml
16) T n-Octacosane (C28)	17.253	2445792	19.962 ug/ml
17) T n-Tricontane (C30)	18.145	2654010	21.310 ug/ml
18) T n-Dotriacontane (C32)	18.981	2710753	22.491 ug/ml
19) T n-Tetratriacontane (C34)	19.769	2397895	21.989 ug/ml
20) T n-Hexatriacontane (C36)	20.512	1979934	21.214 ug/ml
21) T n-Octatriacontane (C38)	21.273	1644138	19.550 ug/ml
22) T n-Tetracontane (C40)	22.224	1439743	18.339 ug/ml

(f)=RT Delta > 1/2 Window

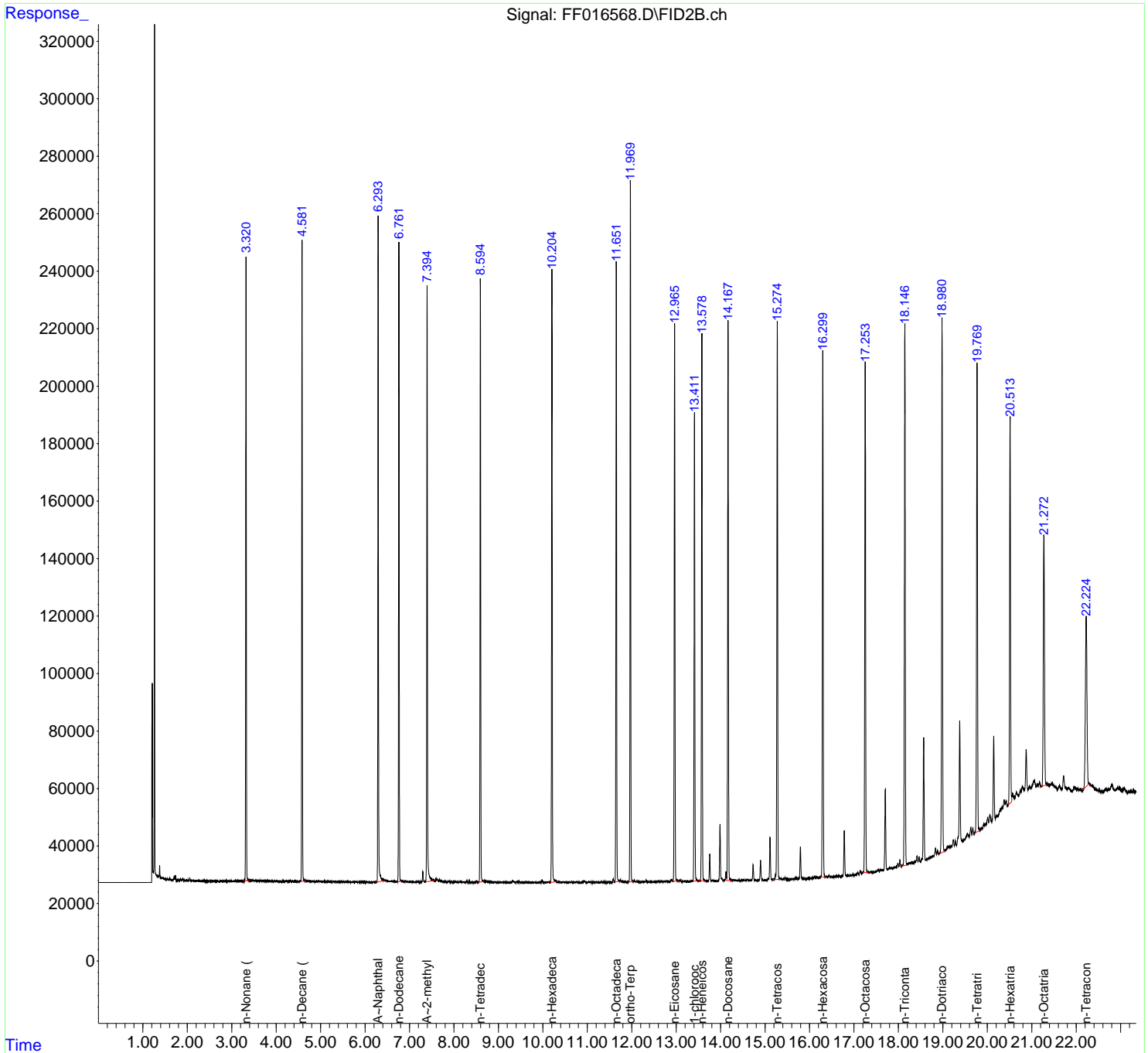
(m)=manual int.

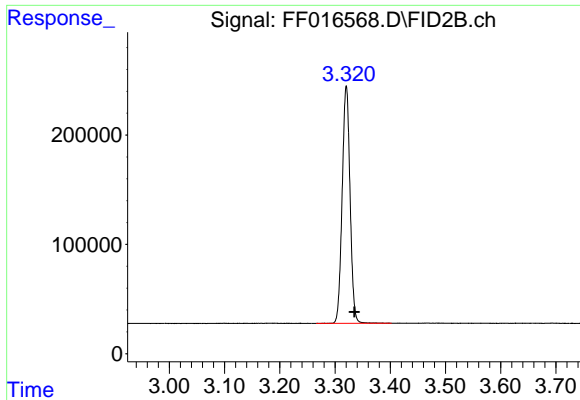
Data Path : Z:\pestpcbsrv\HPCHEM1\FID_F\Data\FF102025AL\
 Data File : FF016568.D
 Signal(s) : FID2B.ch
 Acq On : 20 Oct 2025 13:46
 Operator : YP\AJ
 Sample : 20 PPM ALIPHATIC HC STD
 Misc :
 ALS Vial : 12 Sample Multiplier: 1

Instrument :
 FID_F
 ClientSampleId :
 20 PPM ALIPHATIC HC STD

Integration File: autoint1.e
 Quant Time: Oct 20 23:18:39 2025
 Quant Method : Z:\pestpcbsrv\HPCHEM1\FID_F\Method\Aliphatic EPH 100225.M
 Quant Title : GC Extractables
 QLast Update : Fri Oct 03 05:49:41 2025
 Response via : Initial Calibration
 Integrator: ChemStation

Volume Inj. : 1 ul
 Signal Phase : Rxi-1ms
 Signal Info : 20M x 0.18mm x 0.18um

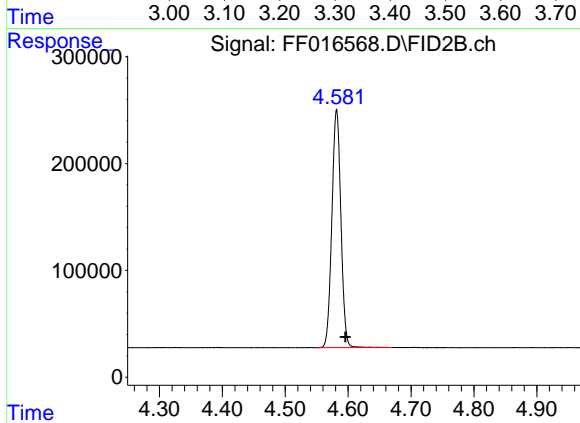




#1 n-Nonane (C9)

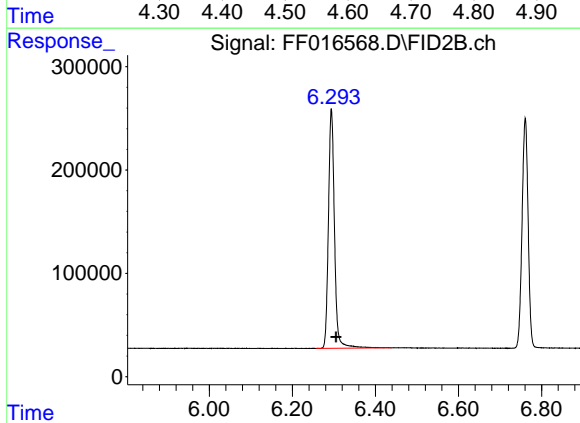
R.T.: 3.320 min
 Delta R.T.: -0.015 min
 Response: 2149569
 Conc: 18.39 ug/ml

Instrument : FID_F
 ClientSampleId : 20 PPM ALIPHATIC HC STD



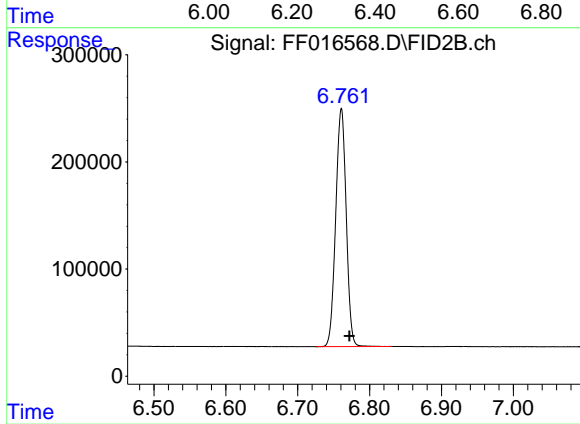
#2 n-Decane (C10)

R.T.: 4.582 min
 Delta R.T.: -0.014 min
 Response: 2222208
 Conc: 18.76 ug/ml



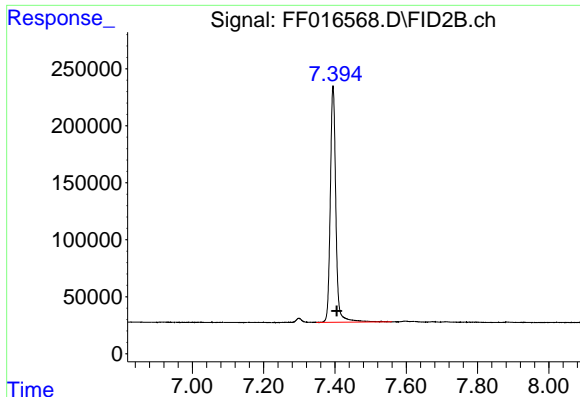
#3 A~Naphthalene (C11.7)

R.T.: 6.294 min
 Delta R.T.: -0.011 min
 Response: 2342376
 Conc: 17.93 ug/ml



#4 n-Dodecane (C12)

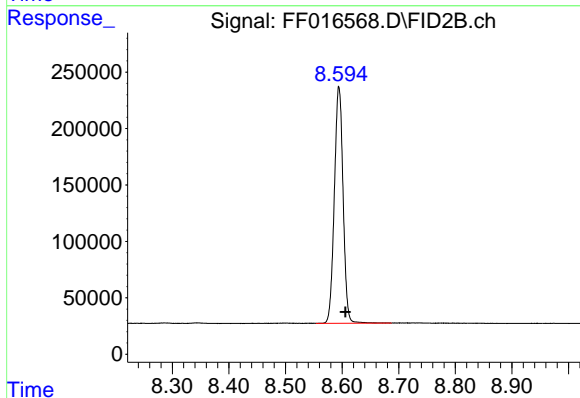
R.T.: 6.761 min
 Delta R.T.: -0.011 min
 Response: 2256062
 Conc: 18.80 ug/ml



#5 A~2-methylnaphthalene (C12.89)

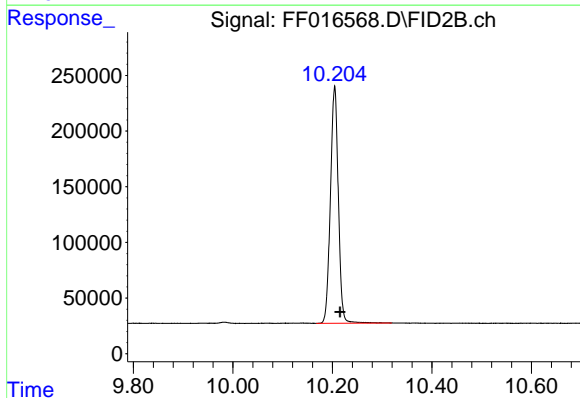
R.T.: 7.395 min
 Delta R.T.: -0.010 min
 Response: 2246996
 Conc: 17.65 ug/ml

Instrument :
 FID_F
 ClientSampleId :
 20 PPM ALIPHATIC HC STD



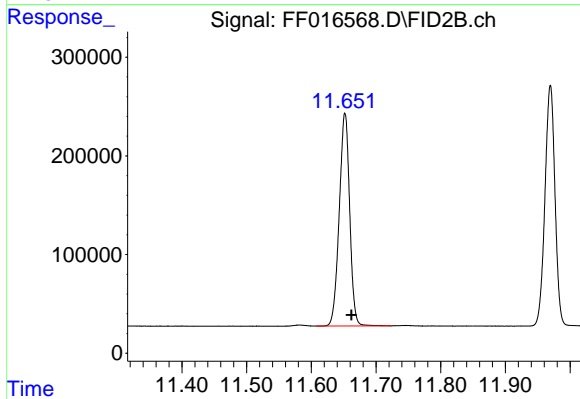
#6 n-Tetradecane (C14)

R.T.: 8.594 min
 Delta R.T.: -0.012 min
 Response: 2246511
 Conc: 18.64 ug/ml



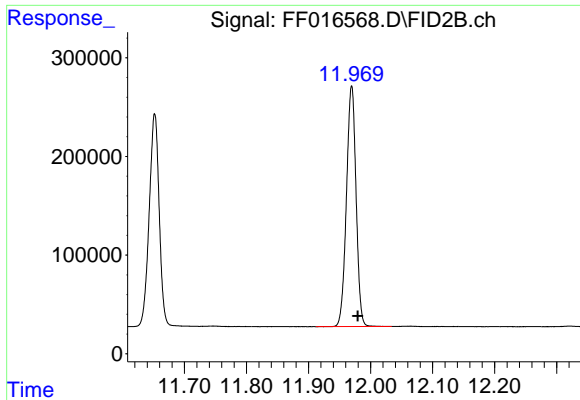
#7 n-Hexadecane (C16)

R.T.: 10.204 min
 Delta R.T.: -0.011 min
 Response: 2345393
 Conc: 18.78 ug/ml



#8 n-Octadecane (C18)

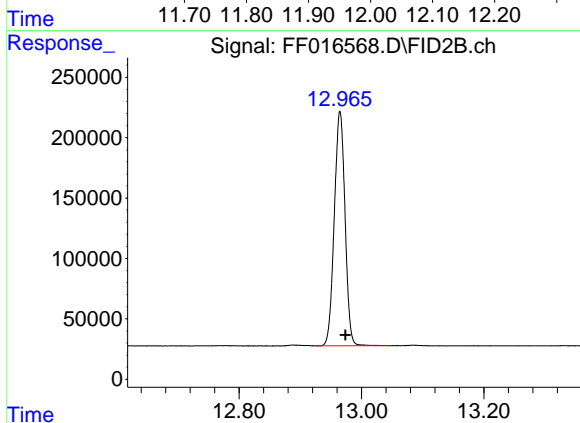
R.T.: 11.652 min
 Delta R.T.: -0.010 min
 Response: 2416670
 Conc: 18.66 ug/ml



#9 ortho-Terphenyl (SURR)

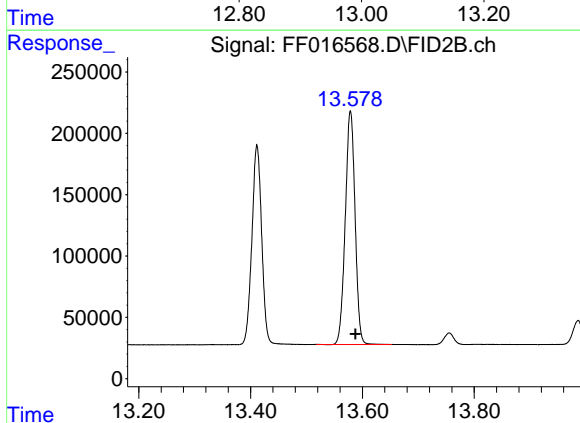
R.T.: 11.970 min
 Delta R.T.: -0.010 min
 Response: 2626426
 Conc: 18.16 ug/ml

Instrument :
 FID_F
 ClientSampleId :
 20 PPM ALIPHATIC HC STD



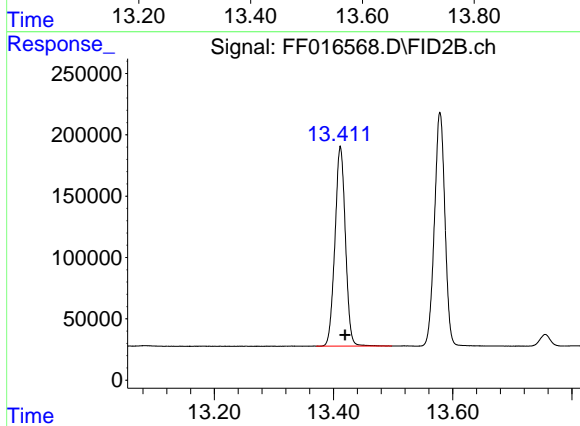
#10 n-Eicosane (C20)

R.T.: 12.965 min
 Delta R.T.: -0.009 min
 Response: 2366254
 Conc: 18.51 ug/ml



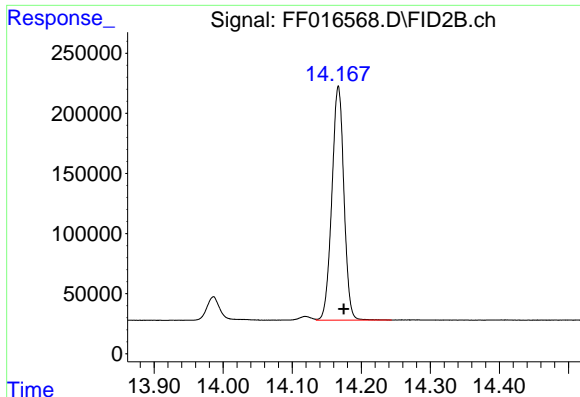
#11 n-Heneicosane (C21)

R.T.: 13.579 min
 Delta R.T.: -0.009 min
 Response: 2316612
 Conc: 18.25 ug/ml



#12 1-chlorooctadecane (SURR)

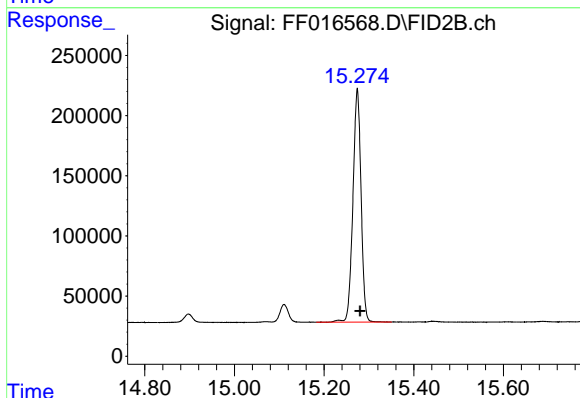
R.T.: 13.412 min
 Delta R.T.: -0.008 min
 Response: 1981100
 Conc: 17.76 ug/ml



#13 n-Docosane (C22)

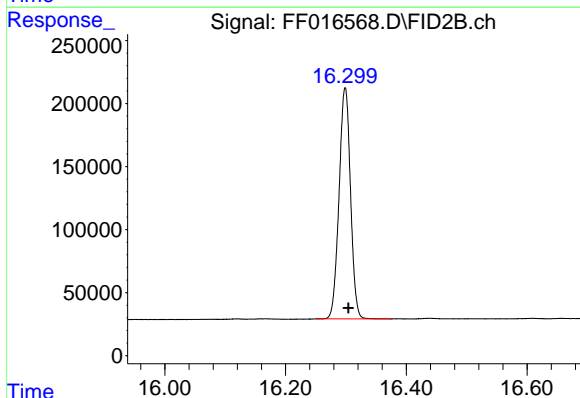
R.T.: 14.167 min
Delta R.T.: -0.008 min
Response: 2359875
Conc: 18.59 ug/ml

Instrument :
FID_F
ClientSampleId :
20 PPM ALIPHATIC HC STD



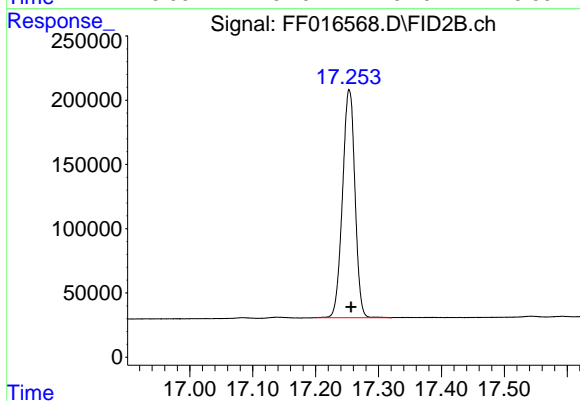
#14 n-Tetracosane (C24)

R.T.: 15.274 min
Delta R.T.: -0.006 min
Response: 2445949
Conc: 19.12 ug/ml



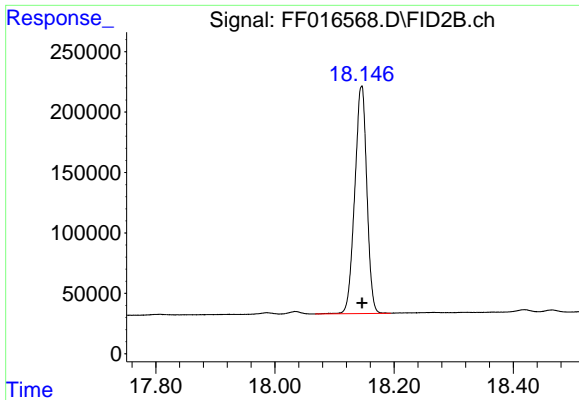
#15 n-Hexacosane (C26)

R.T.: 16.299 min
Delta R.T.: -0.005 min
Response: 2412799
Conc: 19.30 ug/ml



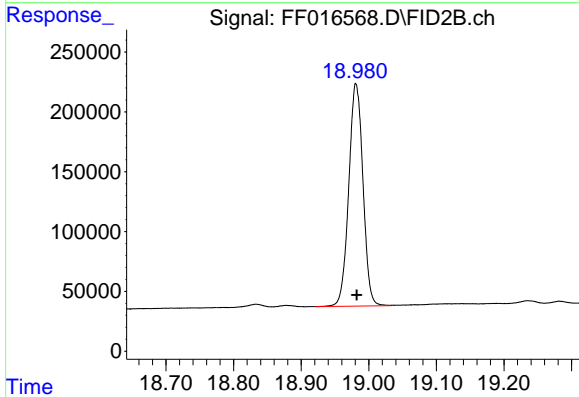
#16 n-Octacosane (C28)

R.T.: 17.253 min
Delta R.T.: -0.003 min
Response: 2445792
Conc: 19.96 ug/ml

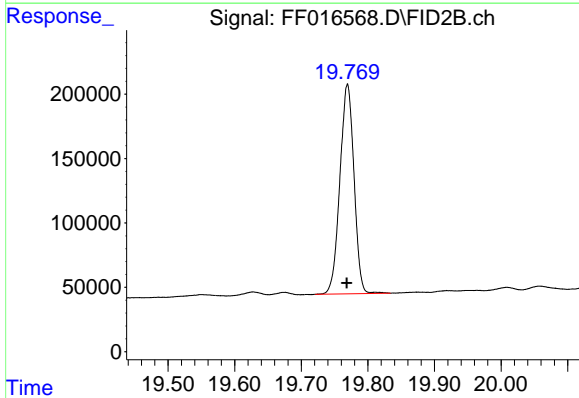


#17 n-Tricontane (C30)
 R.T.: 18.145 min
 Delta R.T.: -0.001 min
 Response: 2654010
 Conc: 21.31 ug/ml

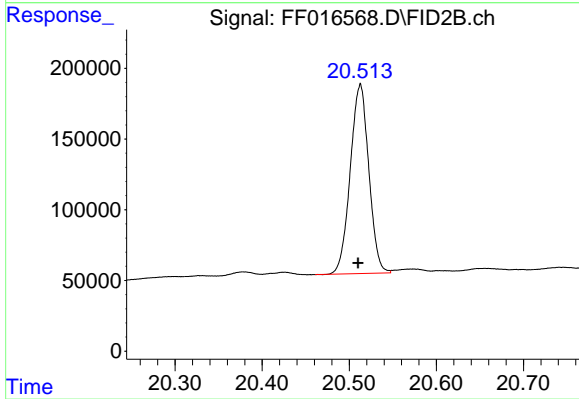
Instrument :
 FID_F
 ClientSampleId :
 20 PPM ALIPHATIC HC STD



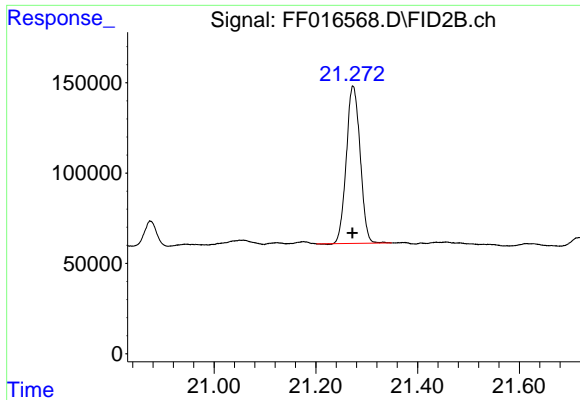
#18 n-Dotriacontane (C32)
 R.T.: 18.981 min
 Delta R.T.: -0.001 min
 Response: 2710753
 Conc: 22.49 ug/ml



#19 n-Tetratriacontane (C34)
 R.T.: 19.769 min
 Delta R.T.: 0.001 min
 Response: 2397895
 Conc: 21.99 ug/ml



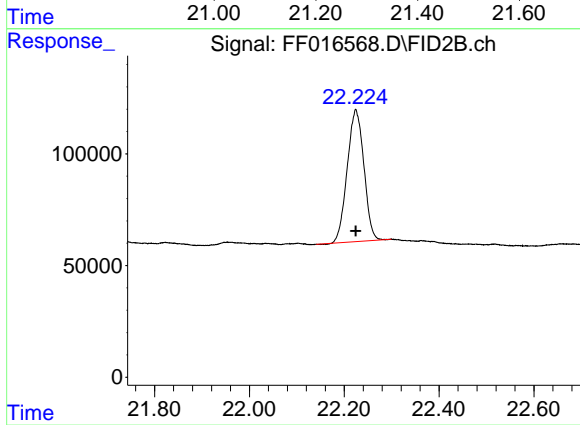
#20 n-Hexatriacontane (C36)
 R.T.: 20.512 min
 Delta R.T.: 0.002 min
 Response: 1979934
 Conc: 21.21 ug/ml



#21 n-Octatriacontane (C38)

R.T.: 21.273 min
Delta R.T.: 0.001 min
Response: 1644138
Conc: 19.55 ug/ml

Instrument :
FID_F
ClientSampleId :
20 PPM ALIPHATIC HC STD



#22 n-Tetracontane (C40)

R.T.: 22.224 min
Delta R.T.: 0.000 min
Response: 1439743
Conc: 18.34 ug/ml