

Data Path : Z:\pestpcbsrv\HPCHEM1\FID_G\Data\FG102025\
 Data File : FG016794.D
 Signal(s) : FID1A.ch
 Acq On : 20 Oct 2025 09:51
 Operator : YP\AJ
 Sample : MECL2
 Misc :
 ALS Vial : 1 Sample Multiplier: 1

Instrument :
 FID_F
 ClientSampleId :
 MECL2

Integration File: autoint1.e
 Quant Time: Oct 21 01:08:23 2025
 Quant Method : Z:\pestpcbsrv\HPCHEM1\FID_G\Method\FG10225.M
 Quant Title :
 QLast Update : Fri Oct 03 07:26:13 2025
 Response via : Initial Calibration
 Integrator: ChemStation

Volume Inj. : 1uL
 Signal Phase : Rxi-1ms
 Signal Info : 20mx0.18mmx0.18um

Compound	R.T.	Response	Conc Units

System Monitoring Compounds			
Target Compounds			
13) N-TRIACONTANE	18.238	7634	0.057 ug/ml
15) N-TETRATRIACONTANE	19.837	87751	0.828 ug/ml
16) N-HEXATRIACONTANE	20.599	103368	1.238 ug/ml
17) N-OCTATRIACONTANE	21.413	132678	1.914 ug/ml

(f)=RT Delta > 1/2 Window

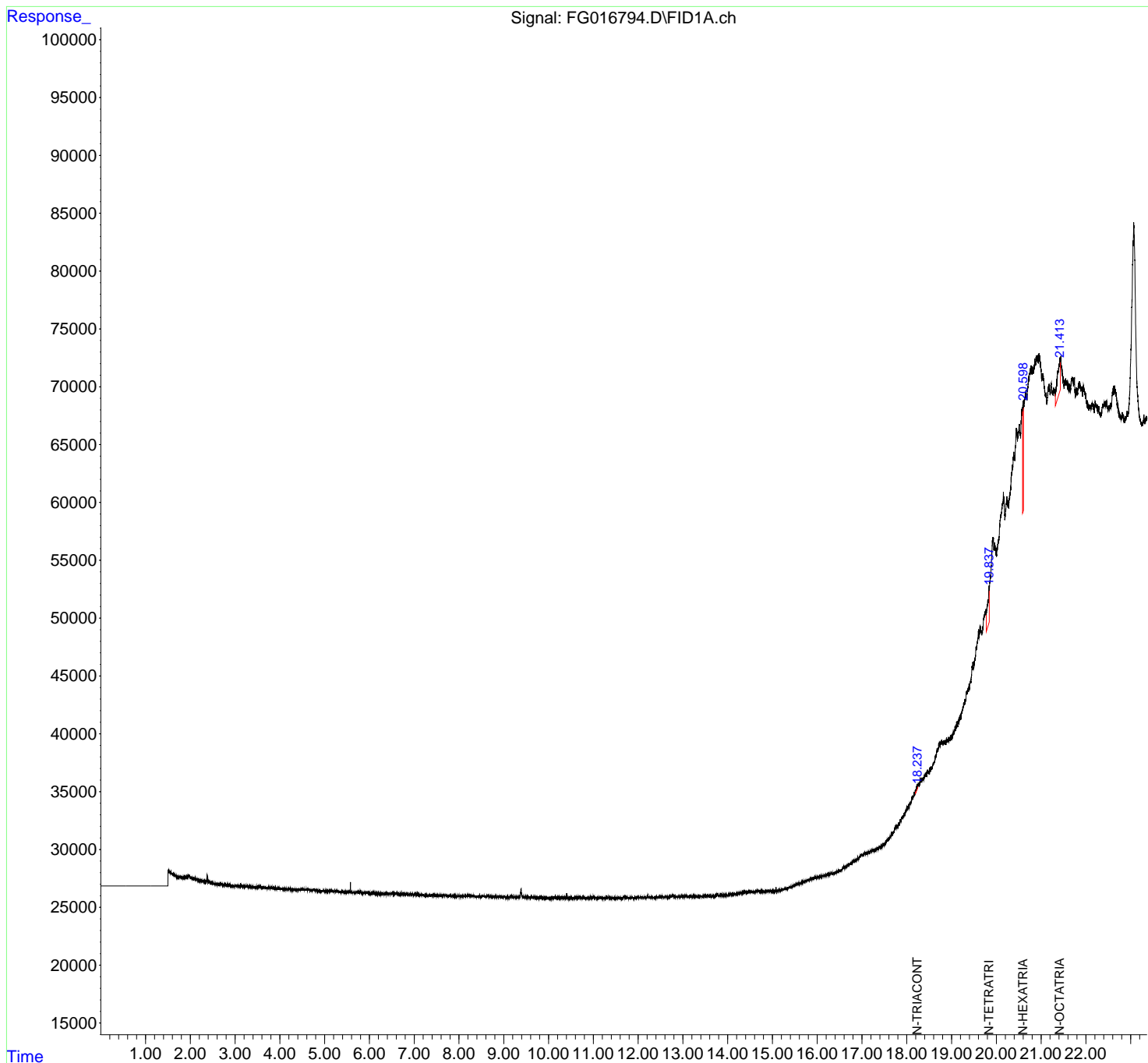
(m)=manual int.

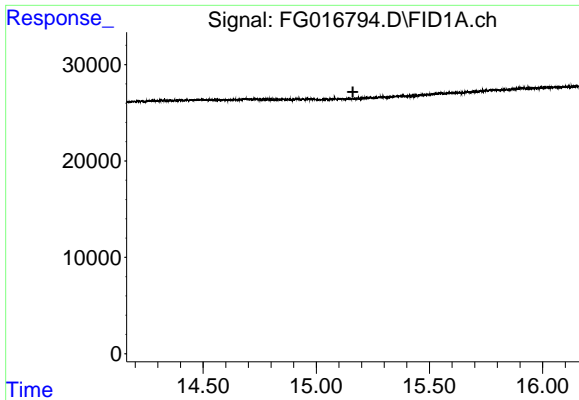
Data Path : Z:\pestpcbsrv\HPCHEM1\FID_G\Data\FG102025\
 Data File : FG016794.D
 Signal(s) : FID1A.ch
 Acq On : 20 Oct 2025 09:51
 Operator : YP\AJ
 Sample : MECL2
 Misc :
 ALS Vial : 1 Sample Multiplier: 1

Instrument :
 FID_F
 ClientSampleId :
 MECL2

Integration File: autoint1.e
 Quant Time: Oct 21 01:08:23 2025
 Quant Method : Z:\pestpcbsrv\HPCHEM1\FID_G\Method\FG102025.M
 Quant Title :
 QLast Update : Fri Oct 03 07:26:13 2025
 Response via : Initial Calibration
 Integrator: ChemStation

Volume Inj. : 1uL
 Signal Phase : Rxi-1ms
 Signal Info : 20mx0.18mmx0.18um

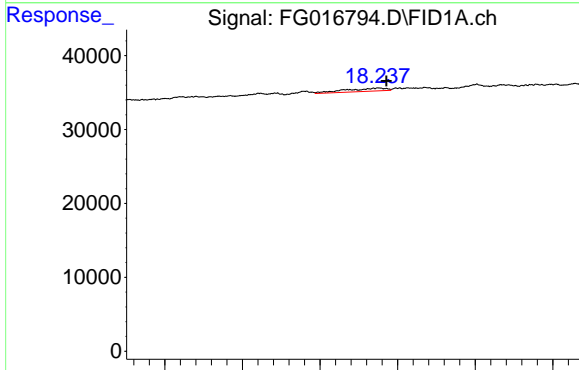




#9 TETRACOSANE-d50 (SURROGATE)

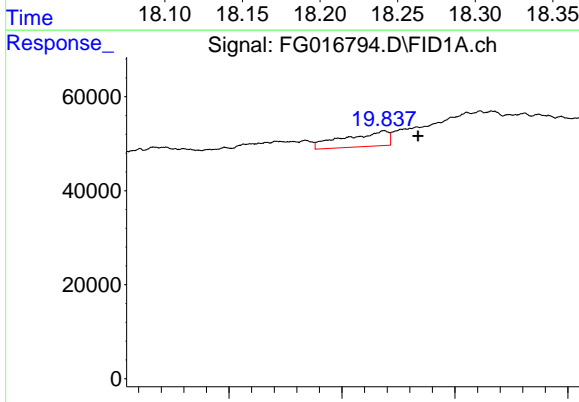
R.T.: 0.000 min
 Exp R.T.: 15.162 min
 Response: 0
 Conc: N.D.

Instrument :
 FID_F
 ClientSampleId :
 MECL2



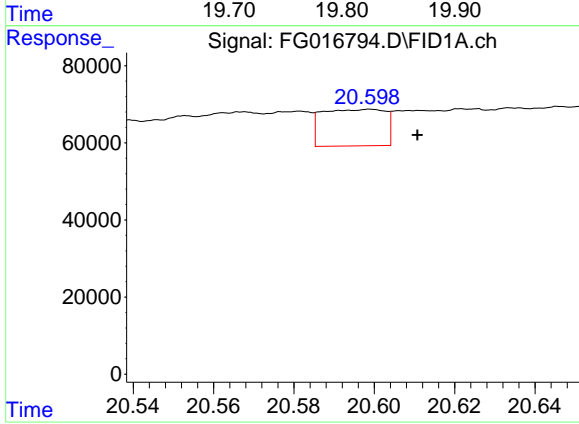
#13 N-TRIACONTANE

R.T.: 18.238 min
 Delta R.T.: -0.005 min
 Response: 7634
 Conc: 0.06 ug/ml



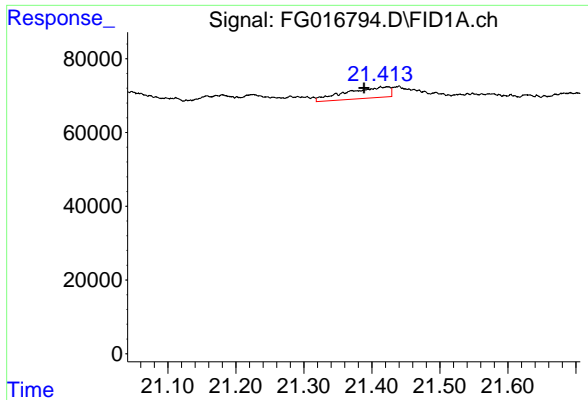
#15 N-TETRATRIACONTANE

R.T.: 19.837 min
 Delta R.T.: -0.030 min
 Response: 87751
 Conc: 0.83 ug/ml



#16 N-HEXATRIACONTANE

R.T.: 20.599 min
 Delta R.T.: -0.012 min
 Response: 103368
 Conc: 1.24 ug/ml



#17 N-OCTATRIACONTANE

R.T.: 21.413 min
Delta R.T.: 0.024 min
Response: 132678
Conc: 1.91 ug/ml

Instrument :
FID_F
ClientSampleId :
MECL2