

Data Path : Z:\pestpcbsrv\HPCHEM1\FID\_E\Data\FE102924AL\  
 Data File : FE050874.D  
 Signal(s) : FID1B.ch  
 Acq On : 29 Oct 2024 08:31  
 Operator : YP\AJ  
 Sample : P4577-01DL 5X  
 Misc :  
 ALS Vial : 11 Sample Multiplier: 1

Instrument :  
 FID\_F  
 ClientSampleId :

Integration File: autoint1.e  
 Quant Time: Oct 30 04:11:24 2024  
 Quant Method : Z:\pestpcbsrv\HPCHEM1\FID\_E\methods\Aliphatic EPH 100824.M  
 Quant Title : GC Extractables  
 QLast Update : Mon Oct 07 16:32:18 2024  
 Response via : Initial Calibration  
 Integrator: ChemStation

Volume Inj. : 1 ul  
 Signal Phase : Rxi-1ms  
 Signal Info : 20M x 0.18mm x 0.18um

Compound	R.T.	Response	Conc Units
-----			
System Monitoring Compounds			
9) S ortho-Terphenyl (SURR)	11.859	1070916	6.793 ug/ml
Spiked Amount	50.000	Recovery =	13.59%
12) S 1-chlorooctadecane (S...	13.293	853559	7.216 ug/ml
Spiked Amount	50.000	Recovery =	14.43%
Target Compounds			
20) T n-Hexatriacontane (C36)	20.357	672196	5.301 ug/ml
-----			

(f)=RT Delta > 1/2 Window

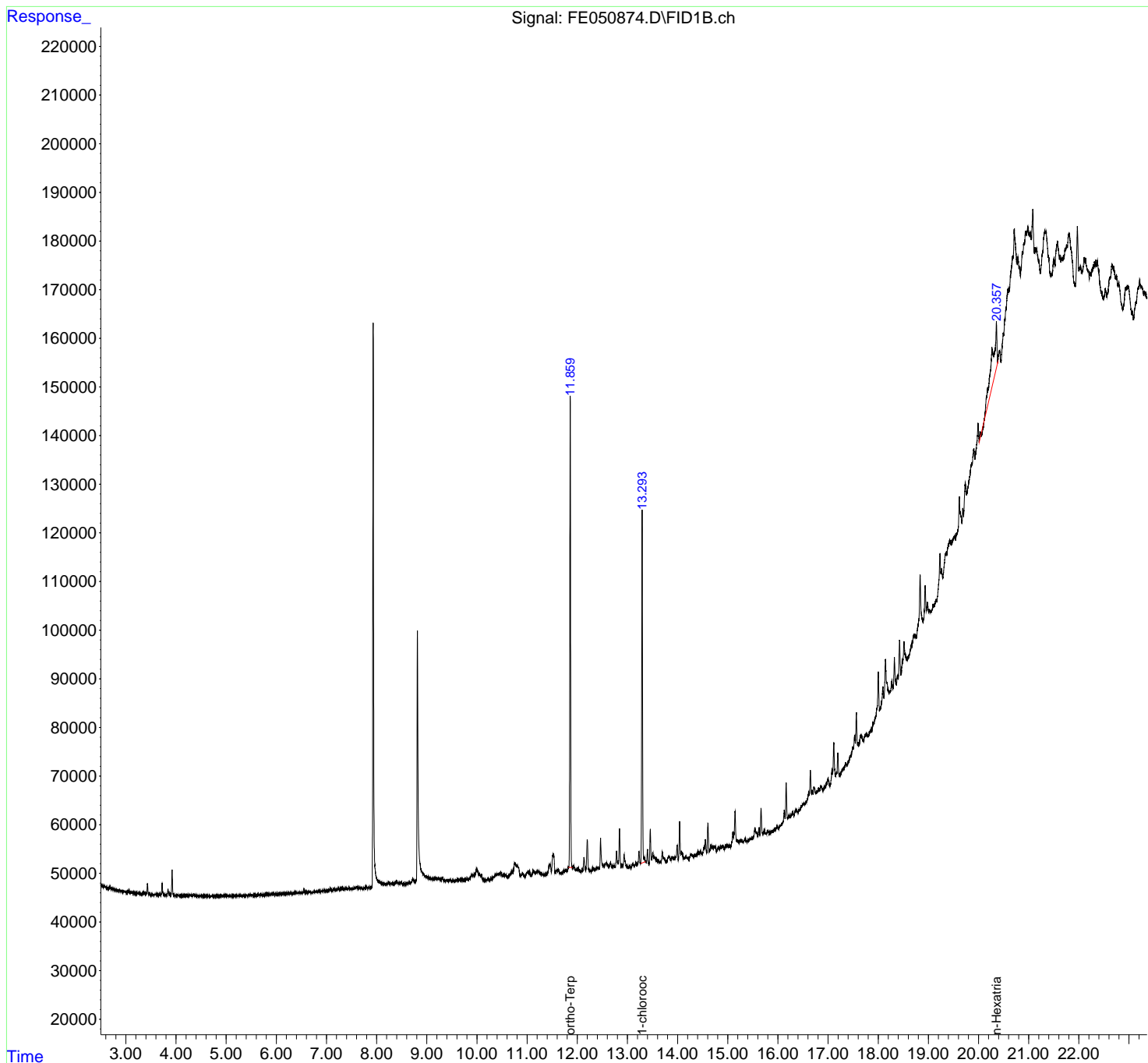
(m)=manual int.

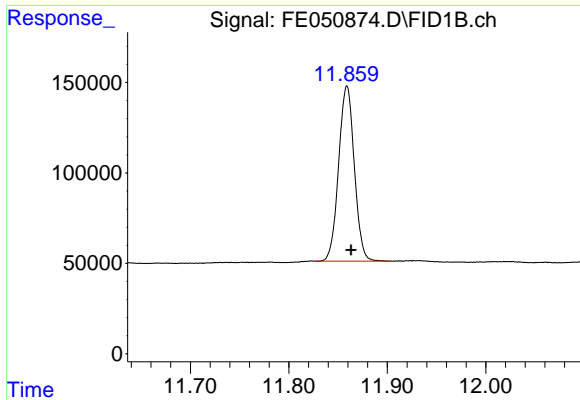
Data Path : Z:\pestpcbsrv\HPCHEM1\FID\_E\Data\FE102924AL\  
 Data File : FE050874.D  
 Signal(s) : FID1B.ch  
 Acq On : 29 Oct 2024 08:31  
 Operator : YP\AJ  
 Sample : P4577-01DL 5X  
 Misc :  
 ALS Vial : 11 Sample Multiplier: 1

Instrument :  
 FID\_F  
 ClientSampleId :

Integration File: autoint1.e  
 Quant Time: Oct 30 04:11:24 2024  
 Quant Method : Z:\pestpcbsrv\HPCHEM1\FID\_E\methods\Aliphatic EPH 100824.M  
 Quant Title : GC Extractables  
 QLast Update : Mon Oct 07 16:32:18 2024  
 Response via : Initial Calibration  
 Integrator: ChemStation

Volume Inj. : 1 ul  
 Signal Phase : Rxi-1ms  
 Signal Info : 20M x 0.18mm x 0.18um

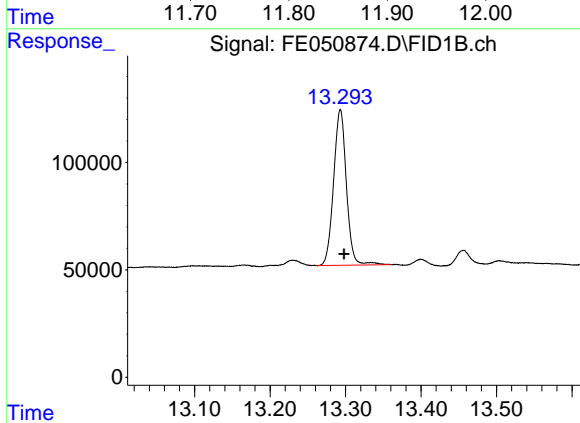




#9 ortho-Terphenyl (SURR)

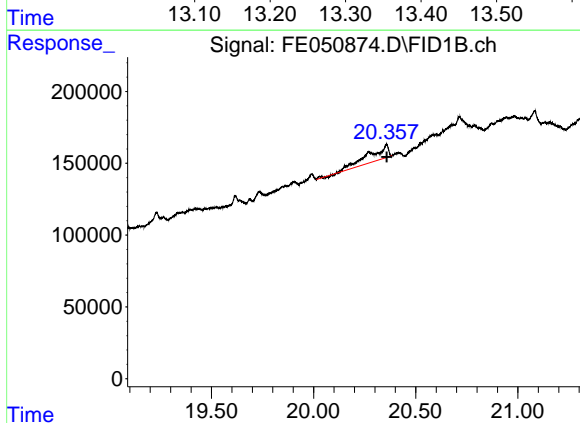
R.T.: 11.859 min  
 Delta R.T.: -0.004 min  
 Response: 1070916  
 Conc: 6.79 ug/ml

Instrument :  
 FID\_F  
 ClientSampleId :



#12 1-chlorooctadecane (SURR)

R.T.: 13.293 min  
 Delta R.T.: -0.005 min  
 Response: 853559  
 Conc: 7.22 ug/ml



#20 n-Hexatriacontane (C36)

R.T.: 20.357 min  
 Delta R.T.: -0.001 min  
 Response: 672196  
 Conc: 5.30 ug/ml