

Data Path : Z:\pestpcbsrv\HPCHEM1\FID\_E\Data\FE102924AL\  
 Data File : FE050894.D  
 Signal(s) : FID1B.ch  
 Acq On : 29 Oct 2024 21:23  
 Operator : YP\AJ  
 Sample : P4597-11  
 Misc :  
 ALS Vial : 23 Sample Multiplier: 1

Instrument :  
 FID\_F  
 ClientSampleId :

Integration File: autoint1.e  
 Quant Time: Oct 30 04:39:30 2024  
 Quant Method : Z:\pestpcbsrv\HPCHEM1\FID\_E\methods\Aliphatic EPH 100824.M  
 Quant Title : GC Extractables  
 QLast Update : Mon Oct 07 16:32:18 2024  
 Response via : Initial Calibration  
 Integrator: ChemStation

Volume Inj. : 1 ul  
 Signal Phase : Rxi-1ms  
 Signal Info : 20M x 0.18mm x 0.18um

Compound	R.T.	Response	Conc Units
-----			
System Monitoring Compounds			
9) S ortho-Terphenyl (SURR)	11.857	4639575	29.429 ug/ml
Spiked Amount	50.000	Recovery	= 58.86%
12) S 1-chlorooctadecane (S...	13.290	3693264	31.221 ug/ml
Spiked Amount	50.000	Recovery	= 62.44%

Target Compounds

-----

(f)=RT Delta > 1/2 Window

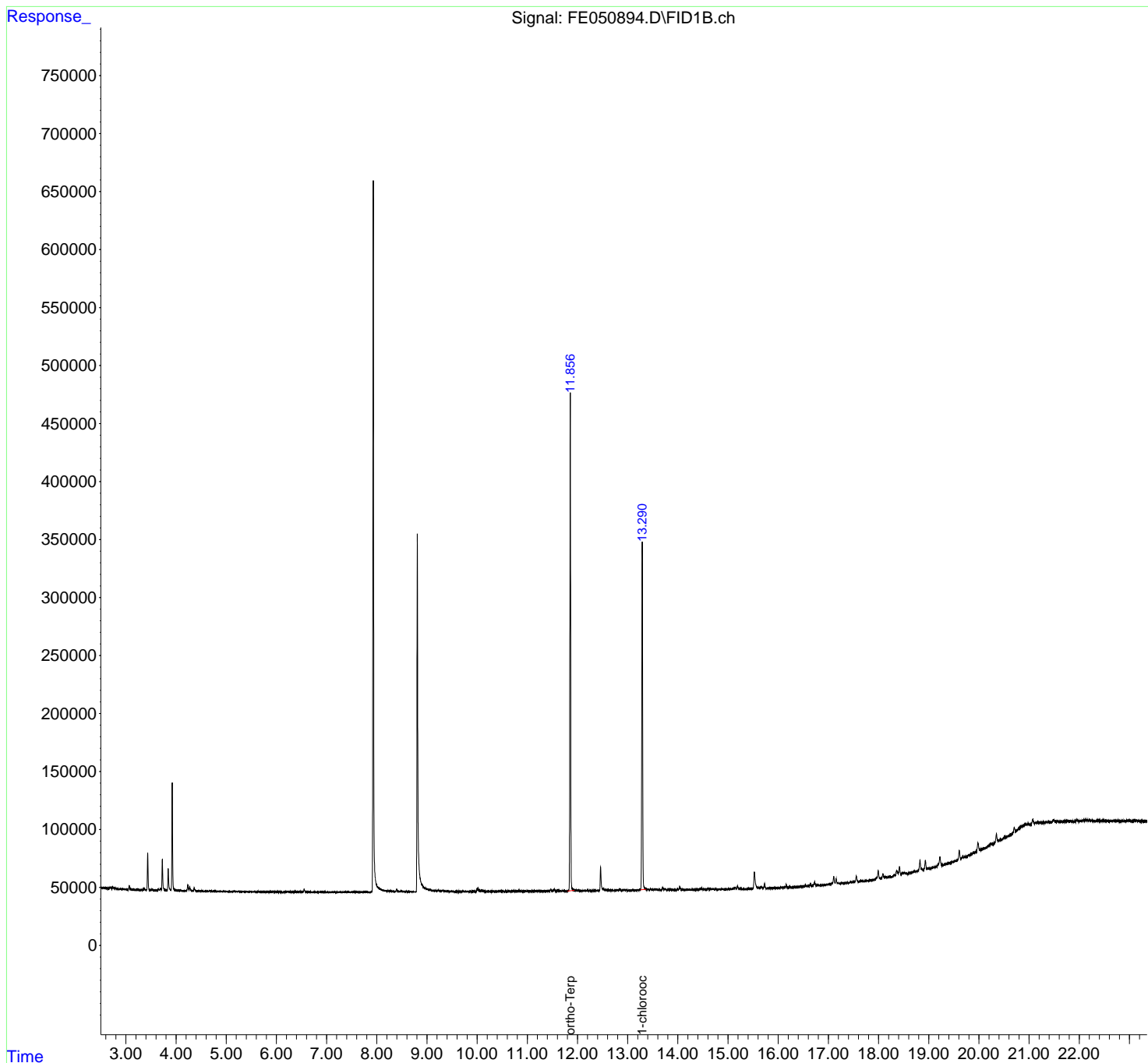
(m)=manual int.

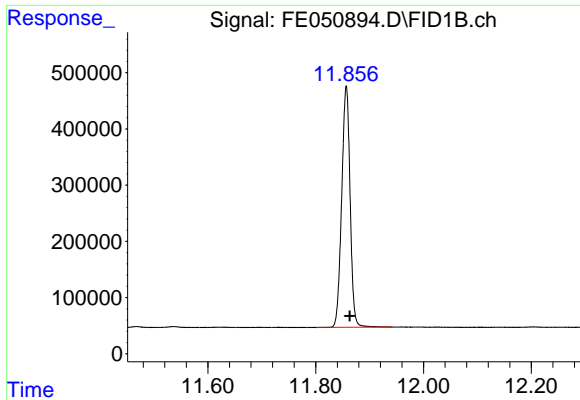
Data Path : Z:\pestpcbsrv\HPCHEM1\FID\_E\Data\FE102924AL\  
 Data File : FE050894.D  
 Signal(s) : FID1B.ch  
 Acq On : 29 Oct 2024 21:23  
 Operator : YP\AJ  
 Sample : P4597-11  
 Misc :  
 ALS Vial : 23 Sample Multiplier: 1

Instrument :  
 FID\_F  
 ClientSampleId :

Integration File: autoint1.e  
 Quant Time: Oct 30 04:39:30 2024  
 Quant Method : Z:\pestpcbsrv\HPCHEM1\FID\_E\methods\Aliphatic EPH 100824.M  
 Quant Title : GC Extractables  
 QLast Update : Mon Oct 07 16:32:18 2024  
 Response via : Initial Calibration  
 Integrator: ChemStation

Volume Inj. : 1 ul  
 Signal Phase : Rxi-1ms  
 Signal Info : 20M x 0.18mm x 0.18um

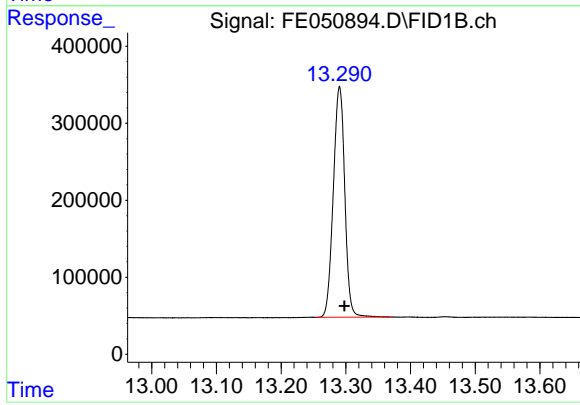




#9 ortho-Terphenyl (SURR)

R.T.: 11.857 min  
 Delta R.T.: -0.006 min  
 Response: 4639575  
 Conc: 29.43 ug/ml

Instrument :  
 FID\_F  
 ClientSampleId :



#12 1-chlorooctadecane (SURR)

R.T.: 13.290 min  
 Delta R.T.: -0.008 min  
 Response: 3693264  
 Conc: 31.22 ug/ml