

Data Path : Z:\pestpcbsrv\HPCHEM1\FID_F\Data\FF110118\
 Data File : FF002542.D
 Signal(s) : FID2B.ch
 Acq On : 01 Nov 2018 14:37
 Operator : AJ\SJ
 Sample : PB114378BS
 Misc :
 ALS Vial : 56 Sample Multiplier: 1

Integration File: autoint1.e
 Quant Time: Nov 02 00:54:53 2018
 Quant Method : Z:\pestpcbsrv\HPCHEM1\FID_F\Method\FF101218.M
 Quant Title :
 QLast Update : Fri Oct 12 13:21:40 2018
 Response via : Initial Calibration
 Integrator: ChemStation

Volume Inj. : 1uL
 Signal Phase : Rxi-1ms
 Signal Info : 20mx0.18mmx0.18um

Compound	R.T.	Response	Conc Units

System Monitoring Compounds			
9) S TETRACOSANE-d50 (SURR...	14.648	2162715	15.560 ug/ml
Target Compounds			
1) N-OCTANE	2.283	2359558	15.748 ug/ml
2) N-DECANE	4.375	2800990	18.336 ug/ml
3) N-DODECANE	6.396	2885464	18.634 ug/ml
4) N-TETRADECANE	8.190	2877933	18.391 ug/ml
5) N-HEXADECANE	9.792	2856419	18.174 ug/ml
6) N-OCTADECANE	11.235	2832347	17.822 ug/ml
7) N-EICOSANE	12.546	2761618	17.436 ug/ml
8) N-DOCOSANE	13.747	2685353	17.021 ug/ml
10) N-TETRACOSANE	14.853	2613121	16.702 ug/ml
11) N-HEXACOSANE	15.876	2517280	16.166 ug/ml
12) N-OCTACOSANE	16.829	2460256	15.861 ug/ml
13) N-TRIACONTANE	17.719	2396749	15.443 ug/ml
14) N-DOTRIACONTANE	18.553	2394480	15.443 ug/ml
15) N-TETRATRIACONTANE	19.340	2385438	16.195 ug/ml
16) N-HEXATRIACONTANE	20.083	2319082	16.907 ug/ml
17) N-OCTATRIACONTANE	20.825	2268716	18.770 ug/ml
18) N-TETRACONTANE	21.740	2361489	19.822 ug/ml

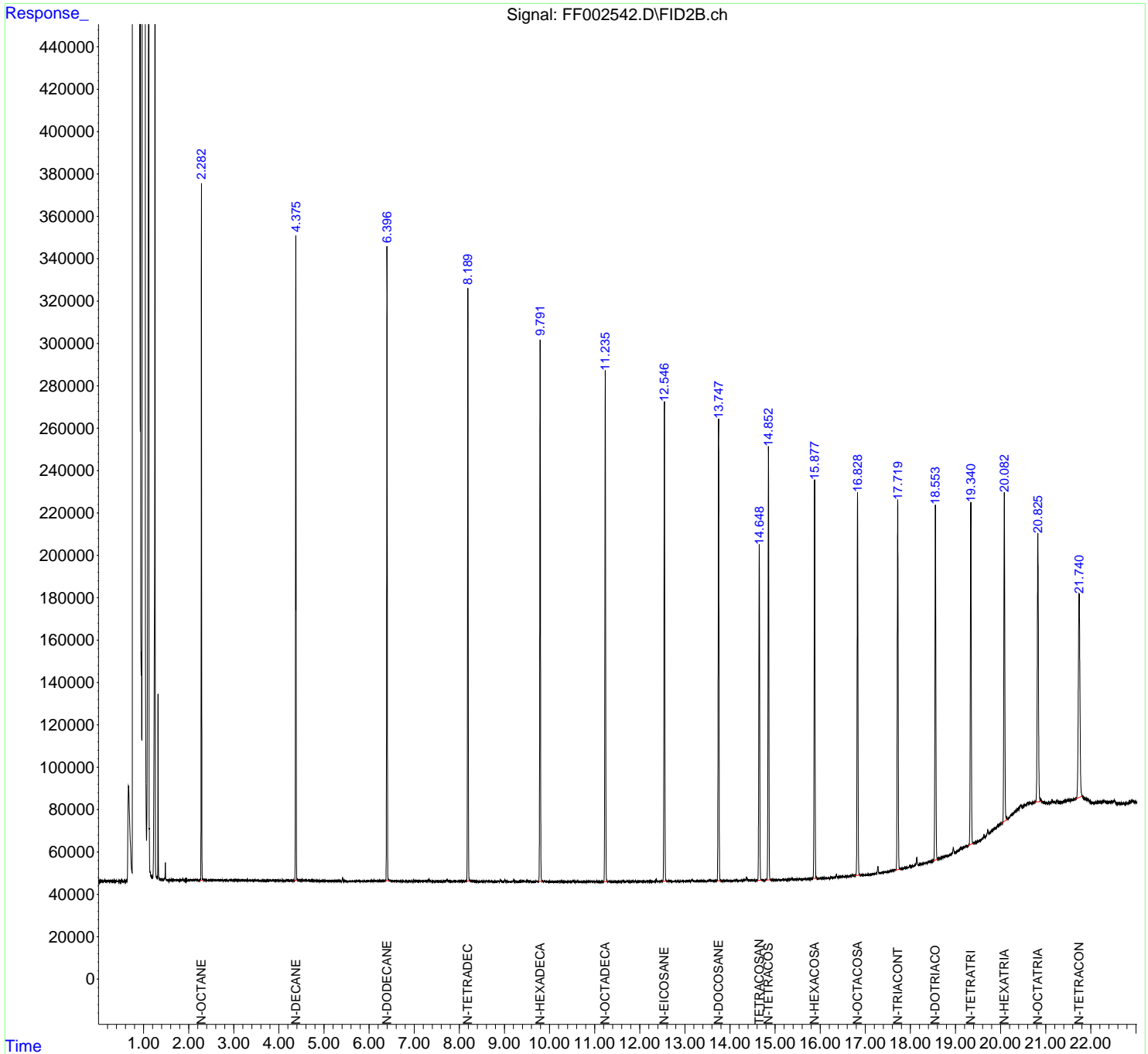
(f)=RT Delta > 1/2 Window

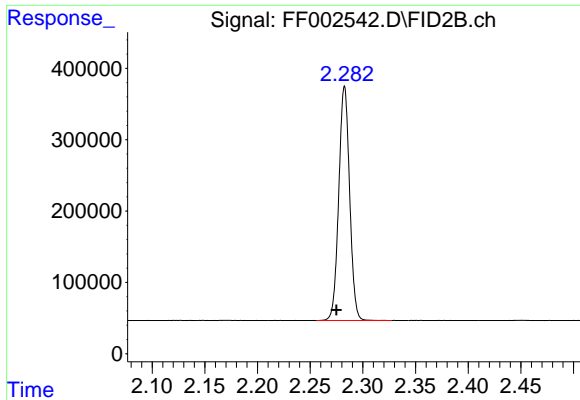
(m)=manual int.

Data Path : Z:\pestpcbsrv\HPCHEM1\FID_F\Data\FF110118\
 Data File : FF002542.D
 Signal(s) : FID2B.ch
 Acq On : 01 Nov 2018 14:37
 Operator : AJ\SJ
 Sample : PB114378BS
 Misc :
 ALS Vial : 56 Sample Multiplier: 1

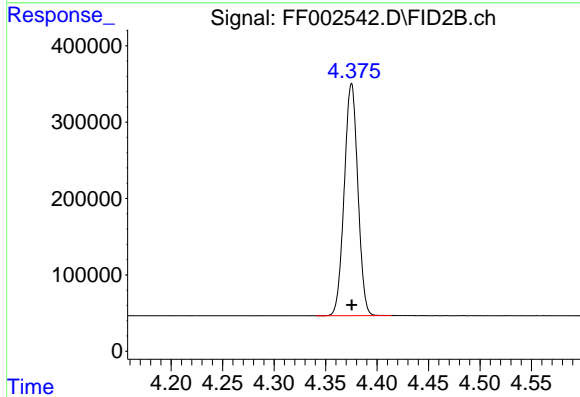
Integration File: autoint1.e
 Quant Time: Nov 02 00:54:53 2018
 Quant Method : Z:\pestpcbsrv\HPCHEM1\FID_F\Method\FF101218.M
 Quant Title :
 QLast Update : Fri Oct 12 13:21:40 2018
 Response via : Initial Calibration
 Integrator: ChemStation

Volume Inj. : 1uL
 Signal Phase : Rxi-1ms
 Signal Info : 20mx0.18mmx0.18um

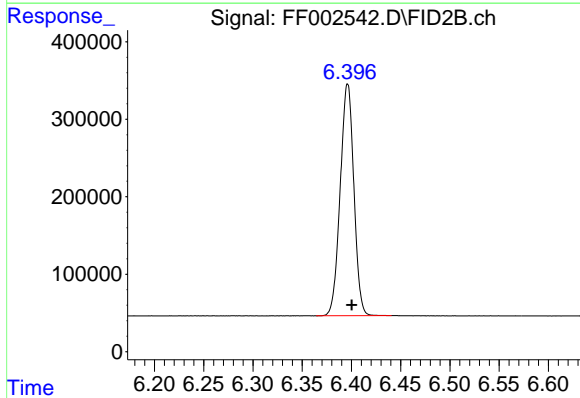




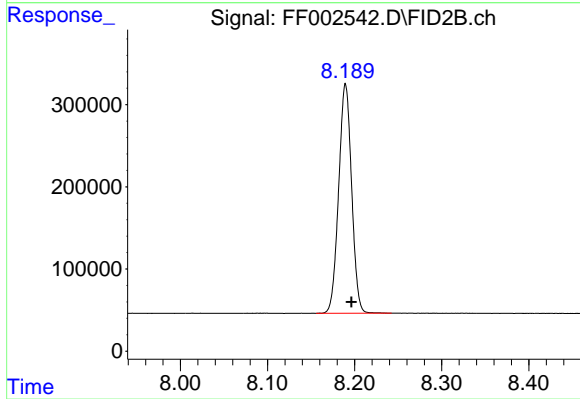
#1 N-OCTANE
R.T.: 2.283 min
Delta R.T.: 0.008 min
Response: 2359558
Conc: 15.75 ug/ml



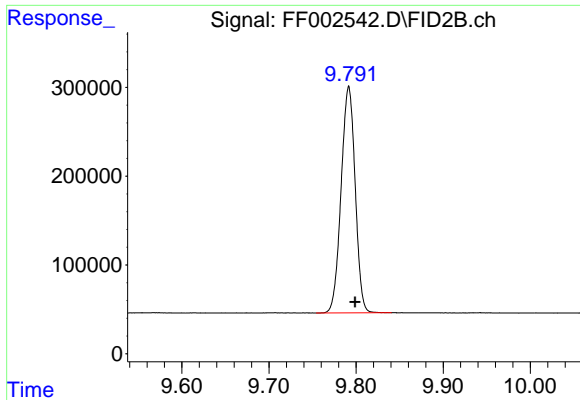
#2 N-DECANE
R.T.: 4.375 min
Delta R.T.: 0.000 min
Response: 2800990
Conc: 18.34 ug/ml



#3 N-DODECANE
R.T.: 6.396 min
Delta R.T.: -0.004 min
Response: 2885464
Conc: 18.63 ug/ml

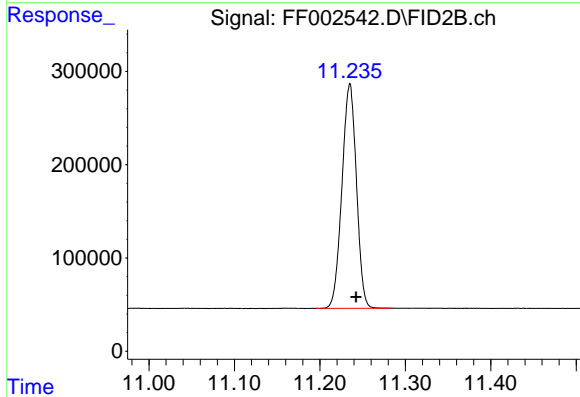


#4 N-TETRADECANE
R.T.: 8.190 min
Delta R.T.: -0.007 min
Response: 2877933
Conc: 18.39 ug/ml



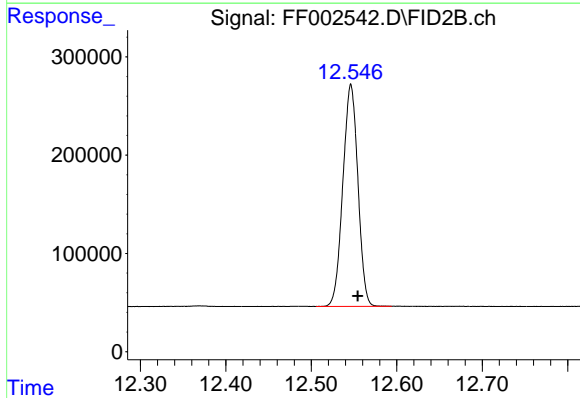
#5 N-HEXADECANE

R.T.: 9.792 min
Delta R.T.: -0.007 min
Response: 2856419
Conc: 18.17 ug/ml



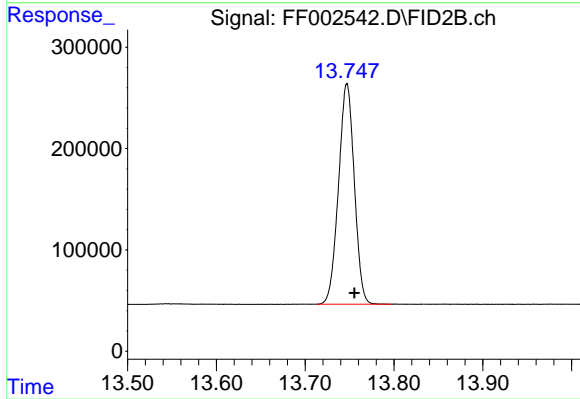
#6 N-OCTADECANE

R.T.: 11.235 min
Delta R.T.: -0.007 min
Response: 2832347
Conc: 17.82 ug/ml



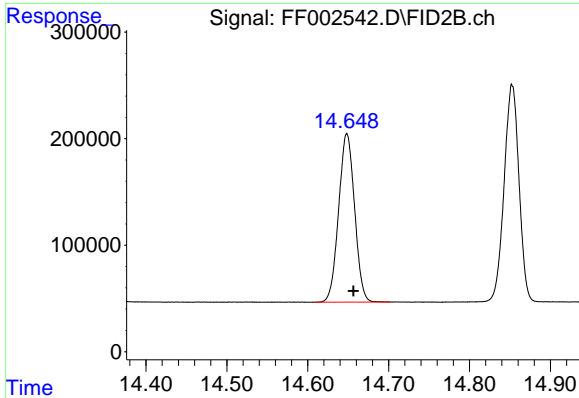
#7 N-EICOSANE

R.T.: 12.546 min
Delta R.T.: -0.008 min
Response: 2761618
Conc: 17.44 ug/ml



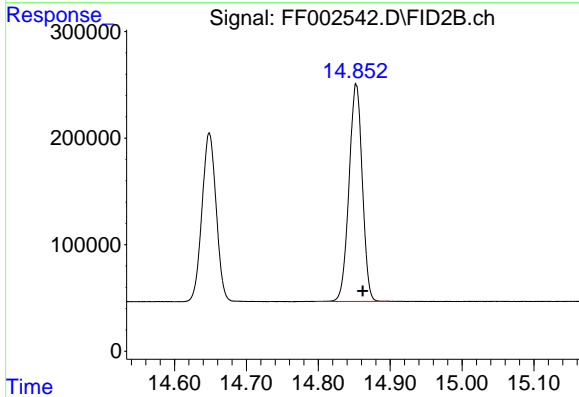
#8 N-DOCOSANE

R.T.: 13.747 min
Delta R.T.: -0.009 min
Response: 2685353
Conc: 17.02 ug/ml



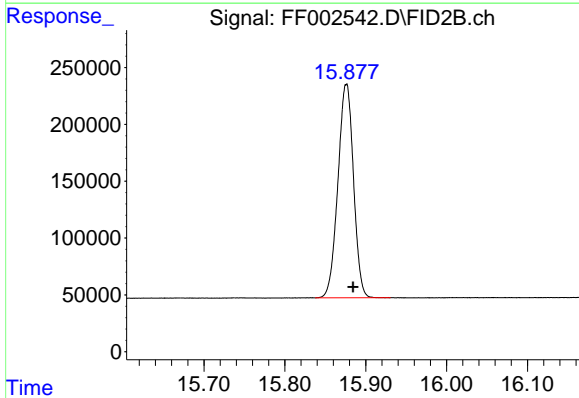
#9 TETRACOSANE-d50 (SURROGATE)

R.T.: 14.648 min
Delta R.T.: -0.008 min
Response: 2162715
Conc: 15.56 ug/ml



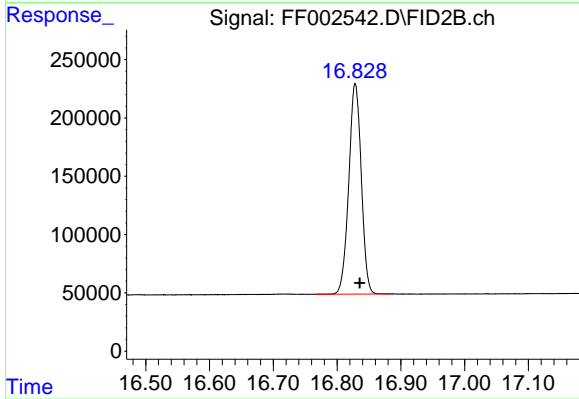
#10 N-TETRACOSANE

R.T.: 14.853 min
Delta R.T.: -0.009 min
Response: 2613121
Conc: 16.70 ug/ml



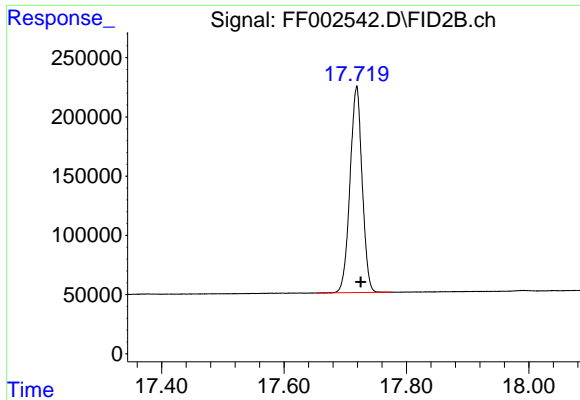
#11 N-HEXACOSANE

R.T.: 15.876 min
Delta R.T.: -0.008 min
Response: 2517280
Conc: 16.17 ug/ml



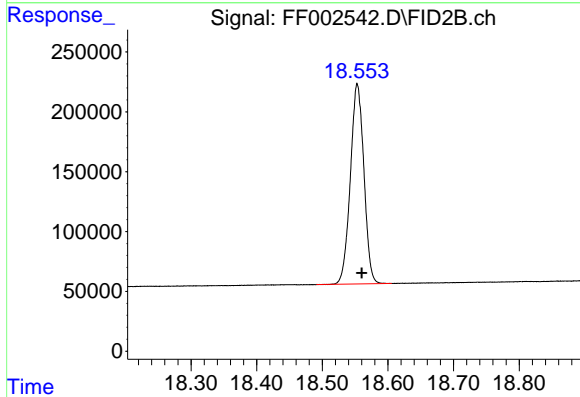
#12 N-OCTACOSANE

R.T.: 16.829 min
Delta R.T.: -0.007 min
Response: 2460256
Conc: 15.86 ug/ml



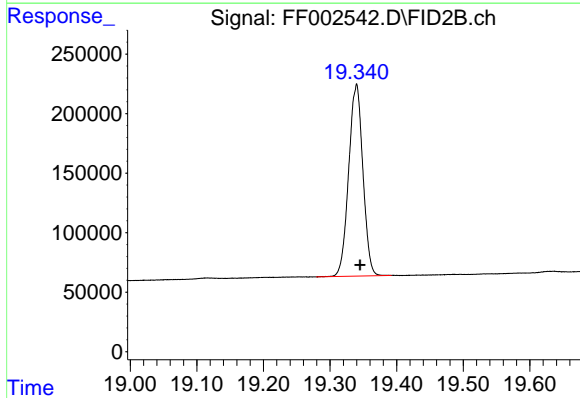
#13 N-TRIACONTANE

R.T.: 17.719 min
Delta R.T.: -0.006 min
Response: 2396749
Conc: 15.44 ug/ml



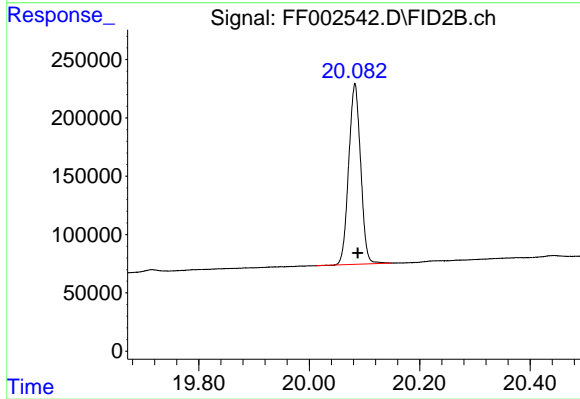
#14 N-DOTRIACONTANE

R.T.: 18.553 min
Delta R.T.: -0.007 min
Response: 2394480
Conc: 15.44 ug/ml



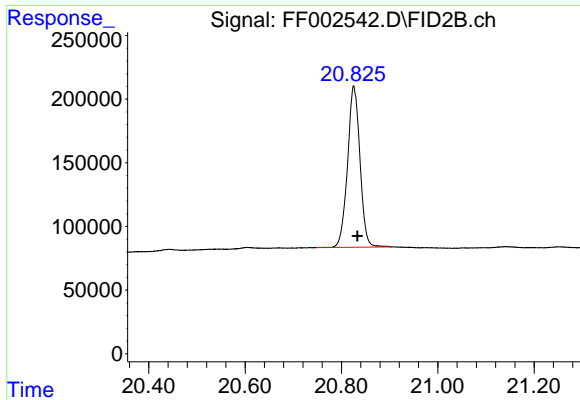
#15 N-TETRATRIACONTANE

R.T.: 19.340 min
Delta R.T.: -0.005 min
Response: 2385438
Conc: 16.20 ug/ml



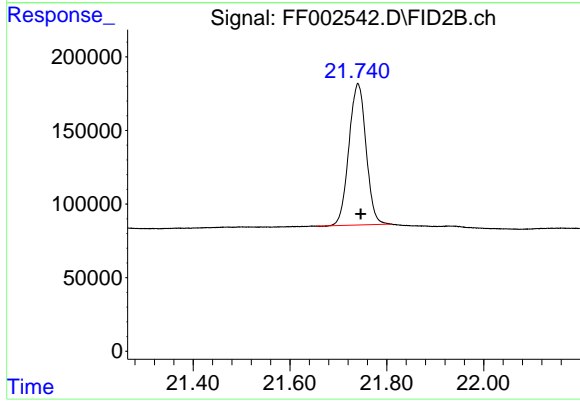
#16 N-HEXATRIACONTANE

R.T.: 20.083 min
Delta R.T.: -0.005 min
Response: 2319082
Conc: 16.91 ug/ml



#17 N-OCTATRIACONTANE

R.T.: 20.825 min
Delta R.T.: -0.007 min
Response: 2268716
Conc: 18.77 ug/ml



#18 N-TETRACONTANE

R.T.: 21.740 min
Delta R.T.: -0.006 min
Response: 2361489
Conc: 19.82 ug/ml