

Data Path : Z:\pestpcbsrv\HPCHEM1\FID_F\Data\FF110824AR\
 Data File : FF014978.D
 Signal(s) : FID2B.ch
 Acq On : 08 Nov 2024 18:55
 Operator : YP\AJ
 Sample : P4721-08
 Misc :
 ALS Vial : 66 Sample Multiplier: 1

Instrument :
 FID_F
 ClientSampleId :

Integration File: autoint1.e
 Quant Time: Nov 09 00:27:53 2024
 Quant Method : Z:\pestpcbsrv\HPCHEM1\FID_F\Method\Aromatic EPH 110724.M
 Quant Title : GC Extractables
 QLast Update : Fri Nov 08 08:49:17 2024
 Response via : Initial Calibration
 Integrator: ChemStation

Volume Inj. : 1 µl
 Signal Phase : Rxi-1ms
 Signal Info : 20M x 0.18mm x 0.18µm

Compound	R.T.	Response	Conc Units

System Monitoring Compounds			
4) S 2-Bromonaphthalene (S...	7.996	8373036	62.916 ug/ml
Spiked Amount 50.000		Recovery =	125.83%
6) S 2-Fluorobiphenyl (SURR)	8.871	5337555	59.846 ug/ml
Spiked Amount 50.000 Range 0 - 131		Recovery =	119.69%
11) S ortho-Terphenyl (SURR)	11.931	5677772	38.549 ug/ml
Spiked Amount 50.000		Recovery =	77.10%
Target Compounds			
1) T 1,2,3-Trimethylbenzen...	4.572	36163	0.238 ug/ml
2) T Naphthalene (C11.7)	6.275	32444	0.207 ug/ml
3) T 2-Methylnaphthalene (...)	7.370	65117	0.415 ug/ml
7) T Acenaphthene (C15.5)	8.921f	42209	0.278 ug/ml
8) T Fluorene (C16.55)	9.752	34238	0.231 ug/ml
9) T Phenanthrene (C19.36)	11.159	11884	0.082 ug/ml
12) T Fluoranthene (C21.85)	12.980	48211	0.345 ug/ml
13) T Pyrene (C20.8)	13.277	21829	0.158 ug/ml
14) T Benzo[a]anthracene (C...	15.194	34948	0.262 ug/ml
15) T Chrysene (C27.41)	15.221	42190	0.311 ug/ml
16) T benzo[b]fluoranthene ...	16.718	56919	0.414 ug/ml
17) T Bnezo[k]fluoranthene ...	16.718	56919	0.442 ug/ml
18) T Benzo[a]pyrene (C31.34)	17.090	16399	0.121 ug/ml
19) T Indeno[1,2,3-cd]pyren...	18.458	168829	1.228 ug/ml
20) T Dibenz[a,h]anthracene...	18.503	97088	0.656 ug/ml
21) T Benzo[g,h,i]perylene ...	18.713	31048	0.212 ug/ml

(f)=RT Delta > 1/2 Window

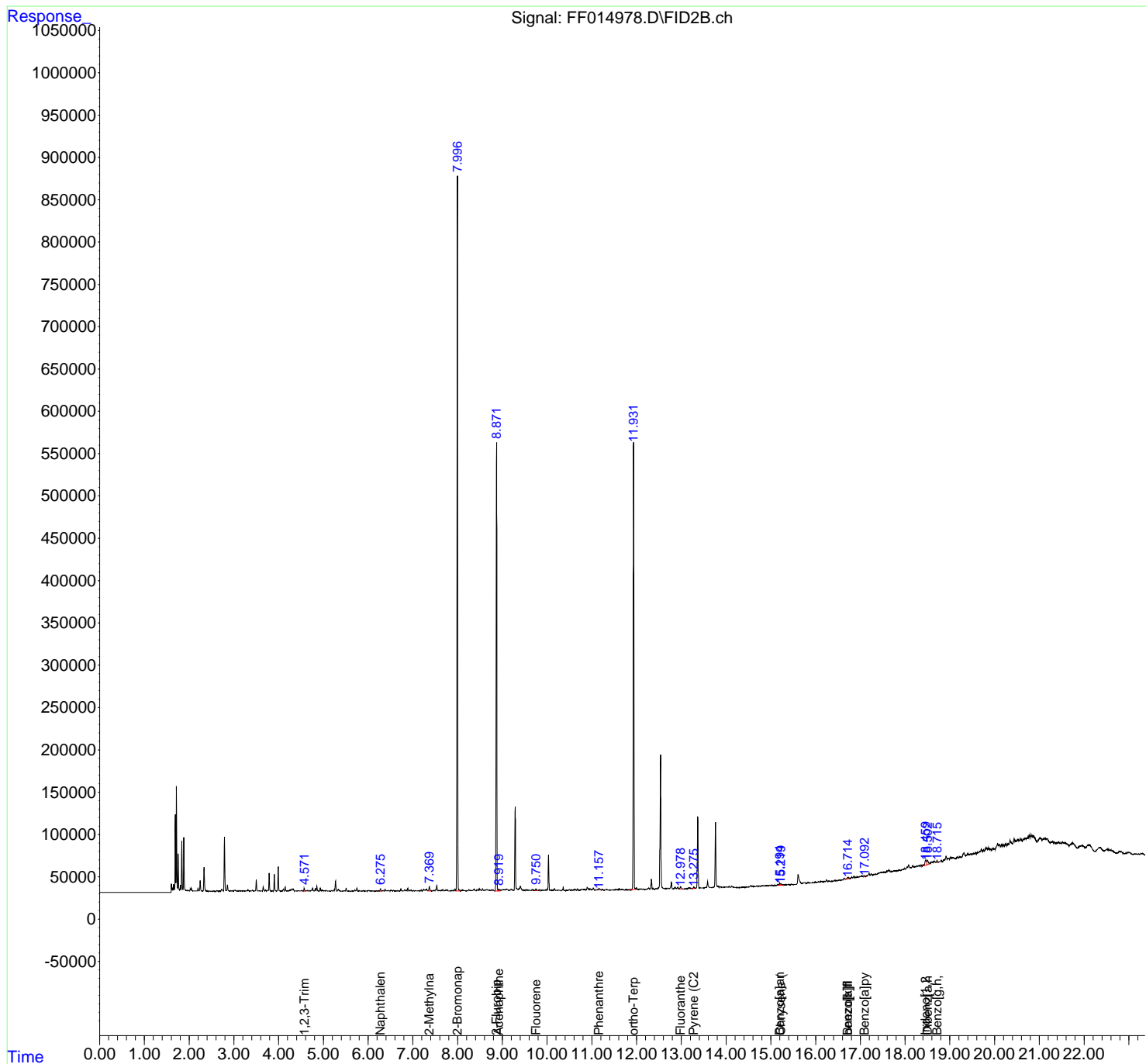
(m)=manual int.

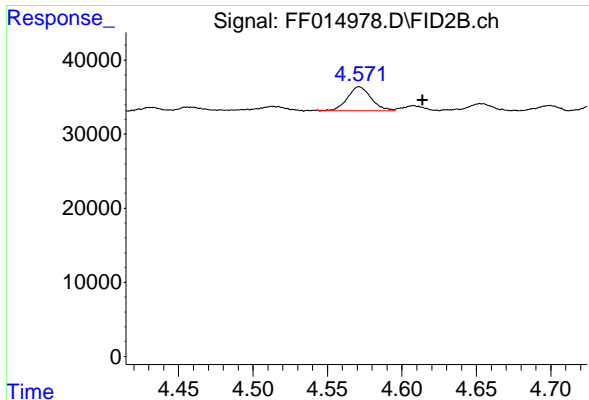
Data Path : Z:\pestpcbsrv\HPCHEM1\FID_F\Data\FF110824AR\
 Data File : FF014978.D
 Signal(s) : FID2B.ch
 Acq On : 08 Nov 2024 18:55
 Operator : YP\AJ
 Sample : P4721-08
 Misc :
 ALS Vial : 66 Sample Multiplier: 1

Instrument :
 FID_F
 ClientSampleId :

Integration File: autoint1.e
 Quant Time: Nov 09 00:27:53 2024
 Quant Method : Z:\pestpcbsrv\HPCHEM1\FID_F\Method\Aromatic EPH 110724.M
 Quant Title : GC Extractables
 QLast Update : Fri Nov 08 08:49:17 2024
 Response via : Initial Calibration
 Integrator: ChemStation

Volume Inj. : 1 µl
 Signal Phase : Rxi-1ms
 Signal Info : 20M x 0.18mm x 0.18µm

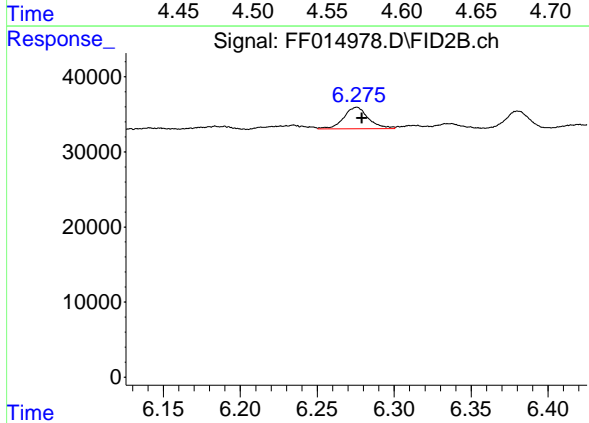




#1 1,2,3-Trimethylbenzene (C10.1)

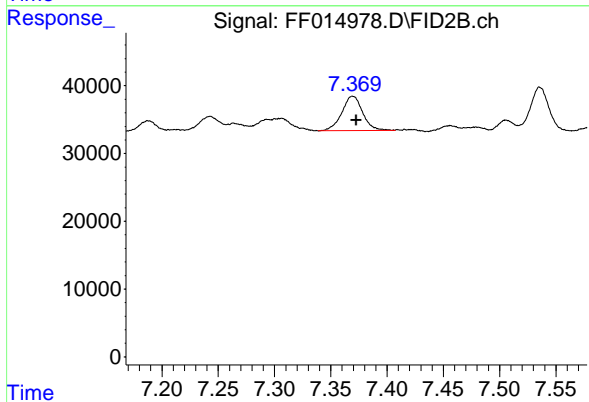
R.T.: 4.572 min
 Delta R.T.: -0.042 min
 Response: 36163
 Conc: 0.24 ug/ml

Instrument :
 FID_F
 ClientSampleId :



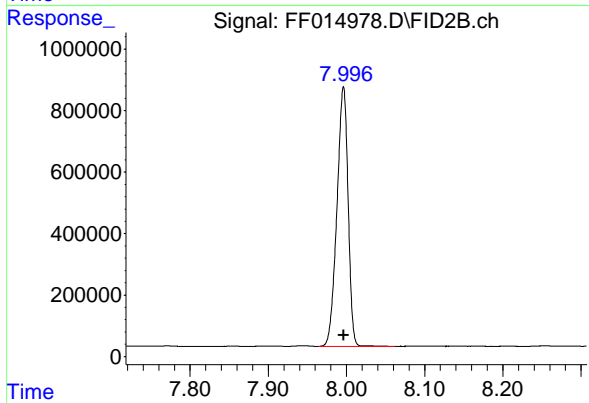
#2 Naphthalene (C11.7)

R.T.: 6.275 min
 Delta R.T.: -0.004 min
 Response: 32444
 Conc: 0.21 ug/ml



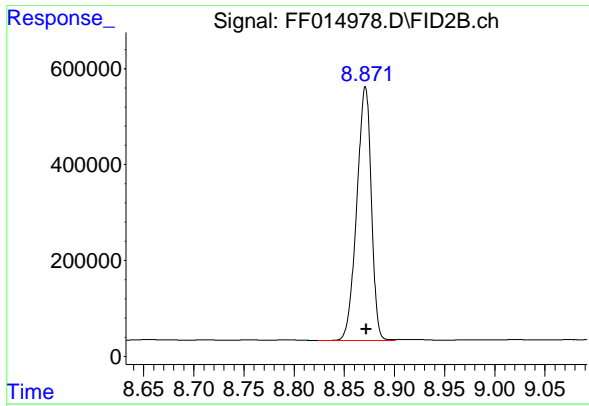
#3 2-Methylnaphthalene (C12.89)

R.T.: 7.370 min
 Delta R.T.: -0.003 min
 Response: 65117
 Conc: 0.42 ug/ml



#4 2-Bromonaphthalene (SURR)

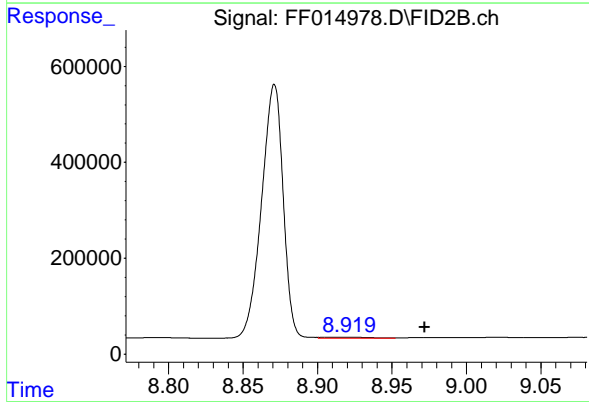
R.T.: 7.996 min
 Delta R.T.: 0.000 min
 Response: 8373036
 Conc: 62.92 ug/ml



#6 2-Fluorobiphenyl (SURR)

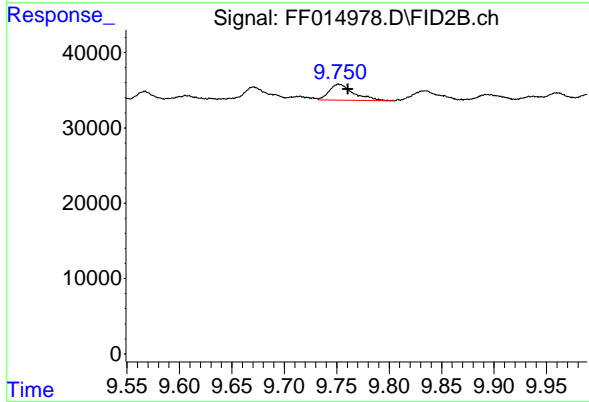
R.T.: 8.871 min
 Delta R.T.: -0.001 min
 Response: 5337555
 Conc: 59.85 ug/ml

Instrument :
 FID_F
 ClientSampleId :



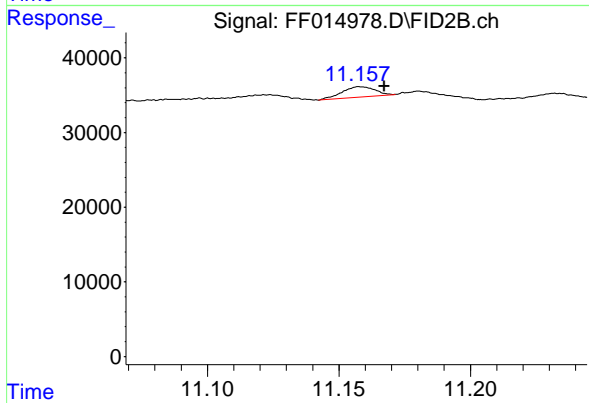
#7 Acenaphthene (C15.5)

R.T.: 8.921 min
 Delta R.T.: -0.051 min
 Response: 42209
 Conc: 0.28 ug/ml



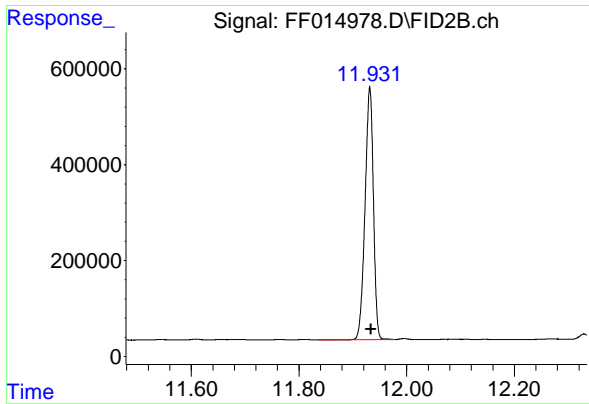
#8 Fluorene (C16.55)

R.T.: 9.752 min
 Delta R.T.: -0.008 min
 Response: 34238
 Conc: 0.23 ug/ml



#9 Phenanthrene (C19.36)

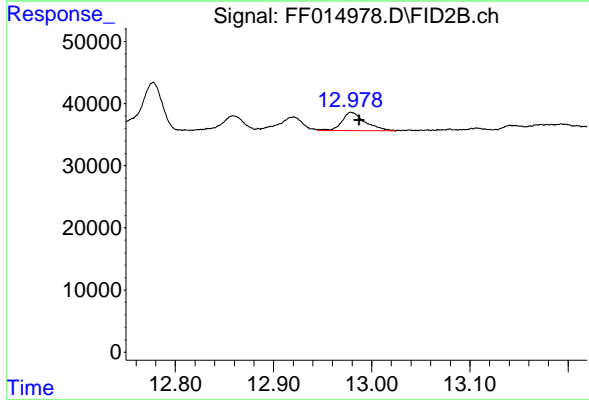
R.T.: 11.159 min
 Delta R.T.: -0.009 min
 Response: 11884
 Conc: 0.08 ug/ml



#11 ortho-Terphenyl (SURR)

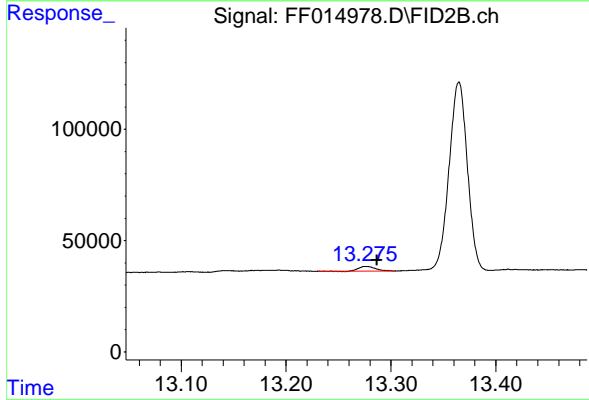
R.T.: 11.931 min
 Delta R.T.: -0.002 min
 Response: 5677772
 Conc: 38.55 ug/ml

Instrument :
 FID_F
 ClientSampleId :



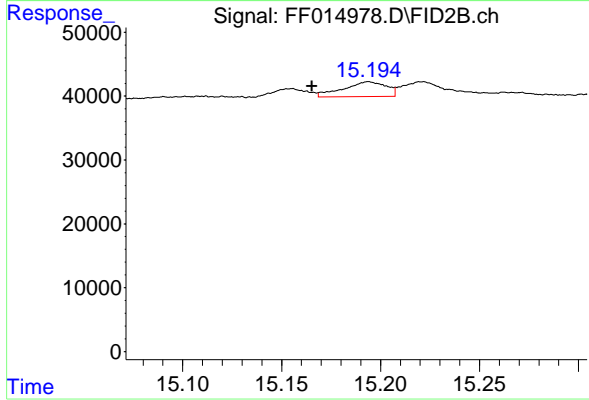
#12 Fluoranthene (C21.85)

R.T.: 12.980 min
 Delta R.T.: -0.008 min
 Response: 48211
 Conc: 0.34 ug/ml



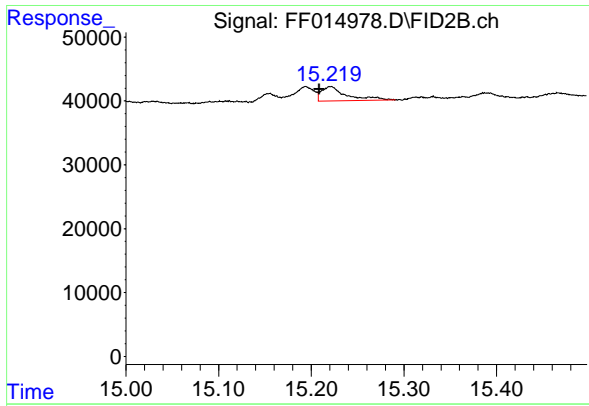
#13 Pyrene (C20.8)

R.T.: 13.277 min
 Delta R.T.: -0.010 min
 Response: 21829
 Conc: 0.16 ug/ml



#14 Benzo[a]anthracene (C26.37)

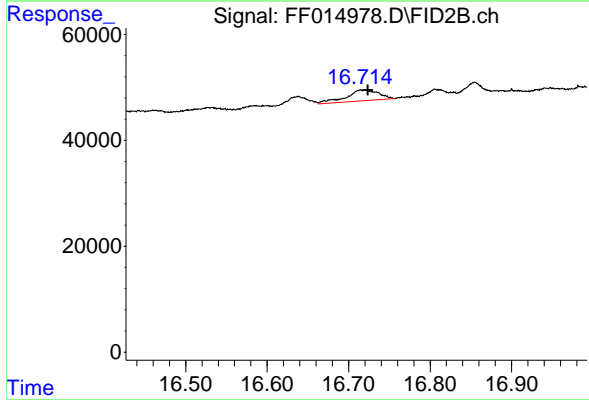
R.T.: 15.194 min
 Delta R.T.: 0.029 min
 Response: 34948
 Conc: 0.26 ug/ml



#15 Chrysene (C27.41)

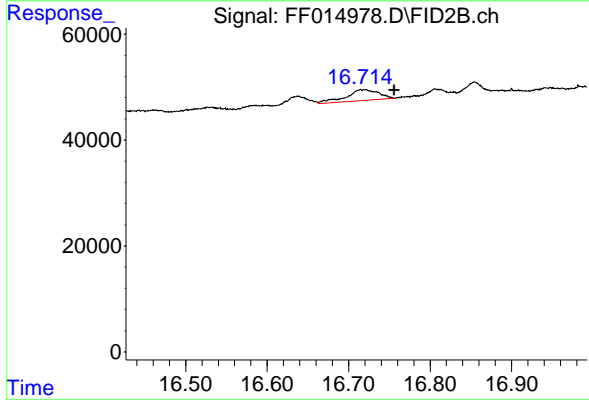
R.T.: 15.221 min
 Delta R.T.: 0.012 min
 Response: 42190
 Conc: 0.31 ug/ml

Instrument :
 FID_F
 ClientSampleId :



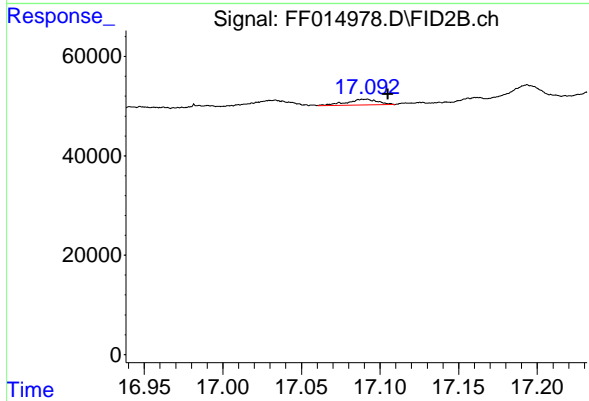
#16 benzo[b]fluoranthene (C30.41)

R.T.: 16.718 min
 Delta R.T.: -0.005 min
 Response: 56919
 Conc: 0.41 ug/ml



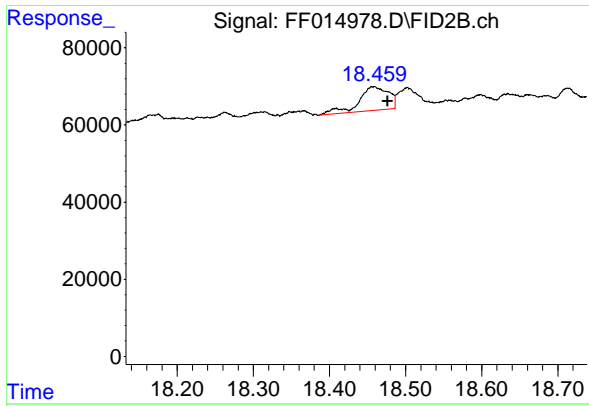
#17 Bnezo[k]fluoranthene (C30.14)

R.T.: 16.718 min
 Delta R.T.: -0.038 min
 Response: 56919
 Conc: 0.44 ug/ml



#18 Benzo[a]pyrene (C31.34)

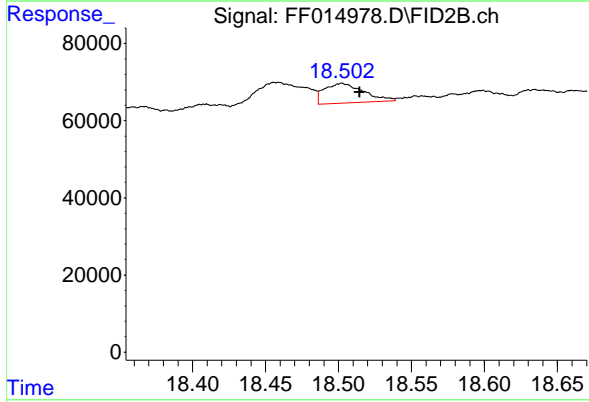
R.T.: 17.090 min
 Delta R.T.: -0.015 min
 Response: 16399
 Conc: 0.12 ug/ml



#19 Indeno[1,2,3-cd]pyrene (C35.01)

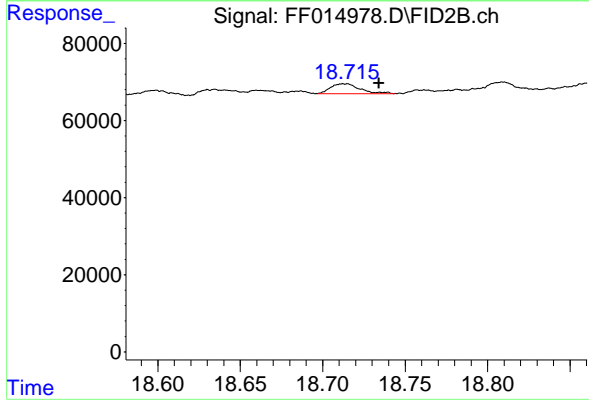
R.T.: 18.458 min
 Delta R.T.: -0.018 min
 Response: 168829
 Conc: 1.23 ug/ml

Instrument :
 FID_F
 ClientSampleId :



#20 Dibenz[a,h]anthracene (C30.36)

R.T.: 18.503 min
 Delta R.T.: -0.012 min
 Response: 97088
 Conc: 0.66 ug/ml



#21 Benzo[g,h,i]perylene (C34.01)

R.T.: 18.713 min
 Delta R.T.: -0.021 min
 Response: 31048
 Conc: 0.21 ug/ml