

Data Path : Z:\pestpcbsrv\HPCHEM1\FID\_F\Data\FF110824AR\  
 Data File : FF014978.D  
 Signal(s) : FID2B.ch  
 Acq On : 08 Nov 2024 18:55  
 Operator : YP\AJ  
 Sample : P4721-08  
 Misc :  
 ALS Vial : 66 Sample Multiplier: 1

Instrument :  
 FID\_F  
 ClientSampleId :  
 EX-9-TPH-1

Integration File: autoint1.e  
 Quant Time: Nov 09 00:27:53 2024  
 Quant Method : Z:\pestpcbsrv\HPCHEM1\FID\_F\Method\Aromatic EPH 110724.M  
 Quant Title : GC Extractables  
 QLast Update : Fri Nov 08 08:49:17 2024  
 Response via : Initial Calibration  
 Integrator: ChemStation

Volume Inj. : 1 µl  
 Signal Phase : Rxi-1ms  
 Signal Info : 20M x 0.18mm x 0.18µm

Compound	R.T.	Response	Conc Units
-----			
System Monitoring Compounds			
4) S 2-Bromonaphthalene (S...	7.996	8373036	62.916 ug/ml
Spiked Amount 50.000		Recovery =	125.83%
6) S 2-Fluorobiphenyl (SURR)	8.871	5337555	59.846 ug/ml
Spiked Amount 50.000 Range 0 - 131		Recovery =	119.69%
11) S ortho-Terphenyl (SURR)	11.931	5677772	38.549 ug/ml
Spiked Amount 50.000		Recovery =	77.10%

Target Compounds

-----

(f)=RT Delta > 1/2 Window

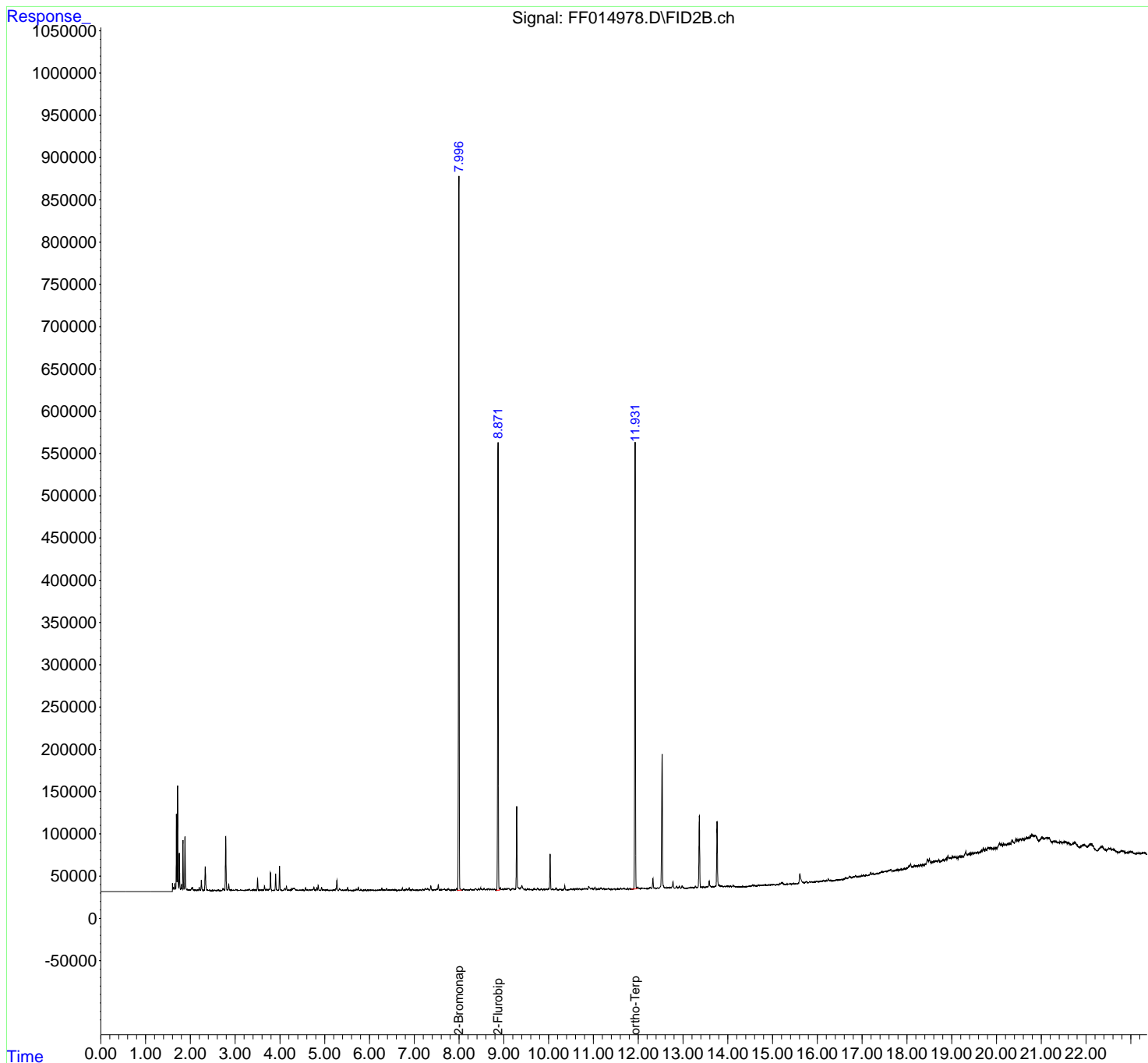
(m)=manual int.

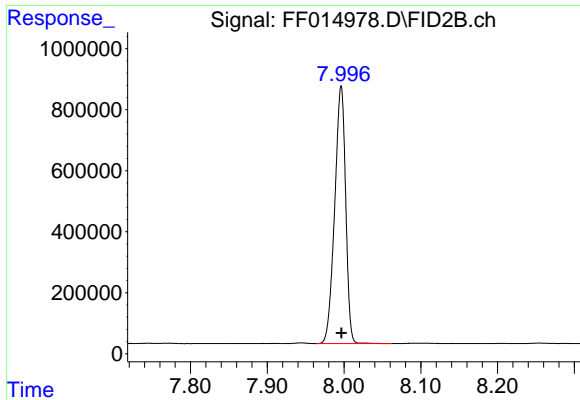
Data Path : Z:\pestpcbsrv\HPCHEM1\FID\_F\Data\FF110824AR\  
 Data File : FF014978.D  
 Signal(s) : FID2B.ch  
 Acq On : 08 Nov 2024 18:55  
 Operator : YP\AJ  
 Sample : P4721-08  
 Misc :  
 ALS Vial : 66 Sample Multiplier: 1

Instrument :  
 FID\_F  
 ClientSampleId :  
 EX-9-TPH-1

Integration File: autoint1.e  
 Quant Time: Nov 09 00:27:53 2024  
 Quant Method : Z:\pestpcbsrv\HPCHEM1\FID\_F\Method\Aromatic EPH 110724.M  
 Quant Title : GC Extractables  
 QLast Update : Fri Nov 08 08:49:17 2024  
 Response via : Initial Calibration  
 Integrator: ChemStation

Volume Inj. : 1 µl  
 Signal Phase : Rxi-1ms  
 Signal Info : 20M x 0.18mm x 0.18µm

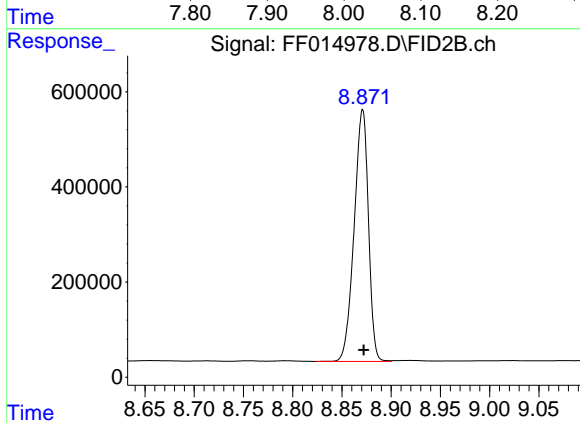




#4 2-Bromonaphthalene (SURR)

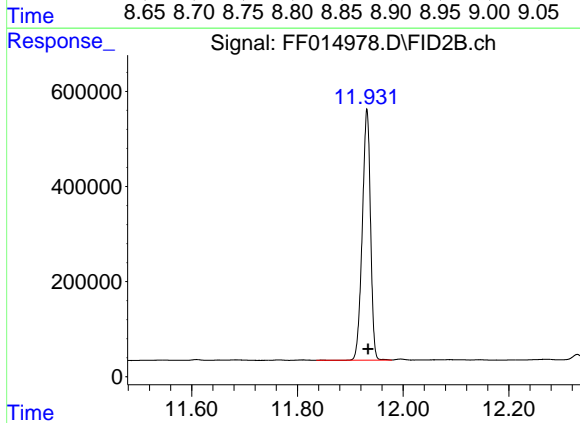
R.T.: 7.996 min  
Delta R.T.: 0.000 min  
Response: 8373036  
Conc: 62.92 ug/ml

Instrument :  
FID\_F  
ClientSampleId :  
EX-9-TPH-1



#6 2-Fluorobiphenyl (SURR)

R.T.: 8.871 min  
Delta R.T.: -0.001 min  
Response: 5337555  
Conc: 59.85 ug/ml



#11 ortho-Terphenyl (SURR)

R.T.: 11.931 min  
Delta R.T.: -0.002 min  
Response: 5677772  
Conc: 38.55 ug/ml