

Data Path : Z:\pestpcbsrv\HPCHEM1\FID_F\Data\FF111018\
 Data File : FF002638.D
 Signal(s) : FID2B.ch
 Acq On : 09 Nov 2018 14:48
 Operator : AJ\SJ
 Sample : J5269-04 MS
 Misc :
 ALS Vial : 58 Sample Multiplier: 1

Integration File: autoint1.e
 Quant Time: Nov 09 21:02:20 2018
 Quant Method : Z:\pestpcbsrv\HPCHEM1\FID_F\Method\FF101218.M
 Quant Title :
 QLast Update : Fri Oct 12 13:21:40 2018
 Response via : Initial Calibration
 Integrator: ChemStation

Volume Inj. : 1uL
 Signal Phase : Rxi-1ms
 Signal Info : 20mx0.18mmx0.18um

Compound	R.T.	Response	Conc Units

System Monitoring Compounds			
9) S TETRACOSANE-d50 (SURR...	14.634	2062564	14.839 ug/ml
Target Compounds			
1) N-OCTANE	2.273	1044338	6.970 ug/ml
2) N-DECANE	4.372	1751886	11.469 ug/ml
3) N-DODECANE	6.392	2005917	12.954 ug/ml
4) N-TETRADECANE	8.184	2167764	13.853 ug/ml
5) N-HEXADECANE	9.784	2234257	14.216 ug/ml
6) N-OCTADECANE	11.226	2220426	13.972 ug/ml
7) N-EICOSANE	12.536	2212201	13.967 ug/ml
8) N-DOCOSANE	13.734	2236140	14.174 ug/ml
10) N-TETRACOSANE	14.838	2123873	13.575 ug/ml
11) N-HEXACOSANE	15.859	2144023	13.769 ug/ml
12) N-OCTACOSANE	16.858	151817	0.979 ug/ml
13) N-TRIACONTANE	17.698	2487270	16.027 ug/ml
14) N-DOTRIACONTANE	18.531	2295914	14.807 ug/ml
15) N-TETRATRIACONTANE	19.317	2061588	13.997 ug/ml
16) N-HEXATRIACONTANE	20.057	2091214	15.245 ug/ml
17) N-OCTATRIACONTANE	20.791	2004853	16.587 ug/ml
18) N-TETRACONTANE	21.688f	2060122	17.292 ug/ml

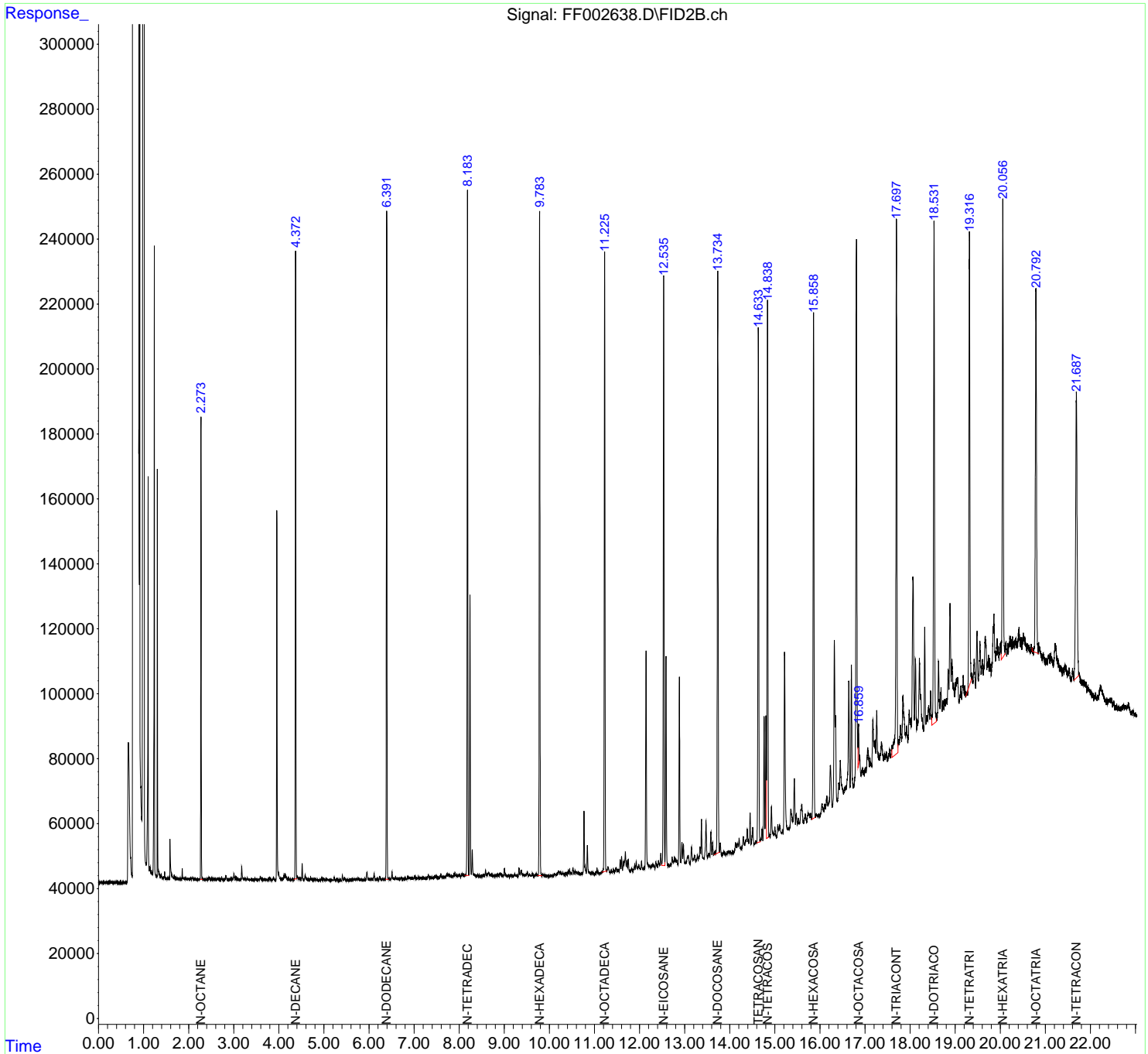
(f)=RT Delta > 1/2 Window

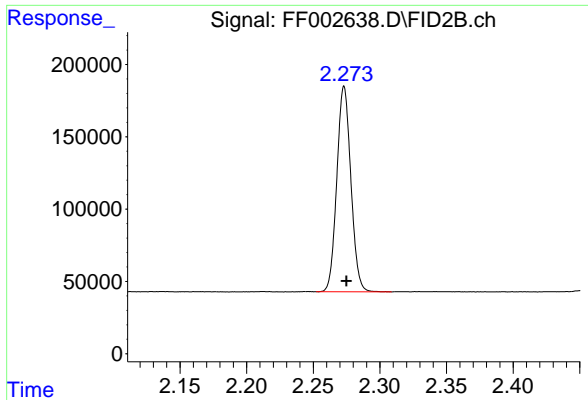
(m)=manual int.

Data Path : Z:\pestpcbsrv\HPCHEM1\FID_F\Data\FF111018\
 Data File : FF002638.D
 Signal(s) : FID2B.ch
 Acq On : 09 Nov 2018 14:48
 Operator : AJ\SJ
 Sample : J5269-04 MS
 Misc :
 ALS Vial : 58 Sample Multiplier: 1

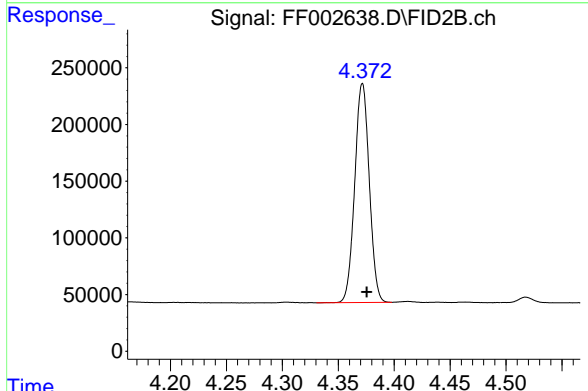
Integration File: autoint1.e
 Quant Time: Nov 09 21:02:20 2018
 Quant Method : Z:\pestpcbsrv\HPCHEM1\FID_F\Method\FF101218.M
 Quant Title :
 QLast Update : Fri Oct 12 13:21:40 2018
 Response via : Initial Calibration
 Integrator: ChemStation

Volume Inj. : 1uL
 Signal Phase : Rxi-1ms
 Signal Info : 20mx0.18mmx0.18um

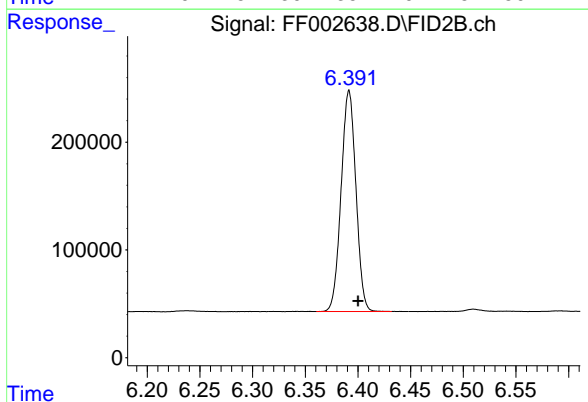




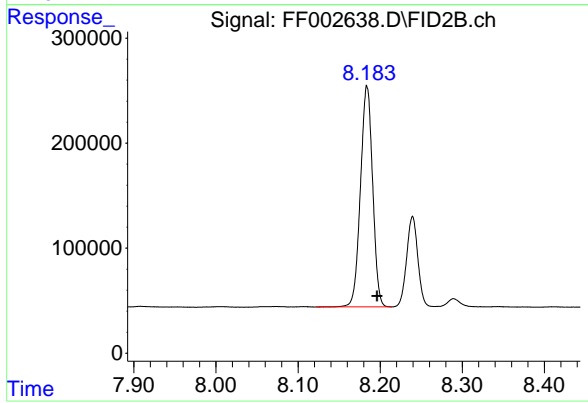
#1 N-OCTANE
R.T.: 2.273 min
Delta R.T.: -0.002 min
Response: 1044338
Conc: 6.97 ug/ml



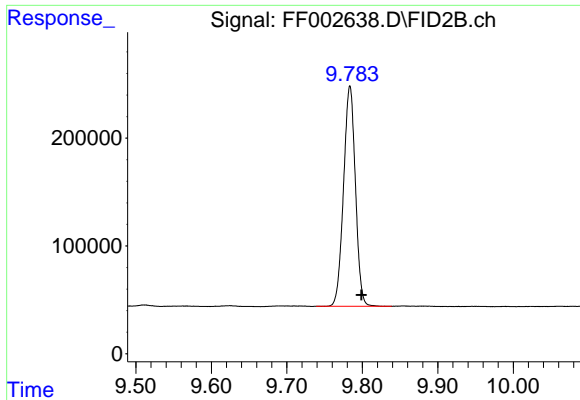
#2 N-DECANE
R.T.: 4.372 min
Delta R.T.: -0.004 min
Response: 1751886
Conc: 11.47 ug/ml



#3 N-DODECANE
R.T.: 6.392 min
Delta R.T.: -0.009 min
Response: 2005917
Conc: 12.95 ug/ml

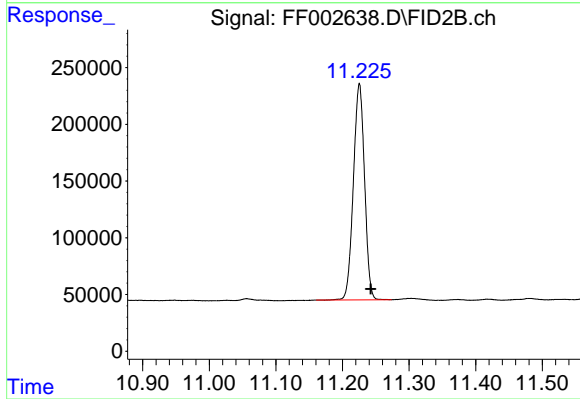


#4 N-TETRADECANE
R.T.: 8.184 min
Delta R.T.: -0.012 min
Response: 2167764
Conc: 13.85 ug/ml



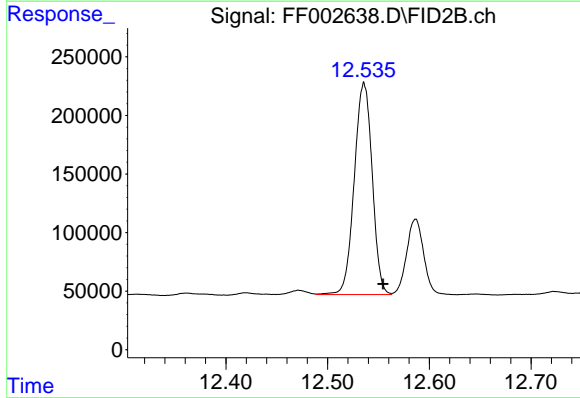
#5 N-HEXADECANE

R.T.: 9.784 min
Delta R.T.: -0.015 min
Response: 2234257
Conc: 14.22 ug/ml



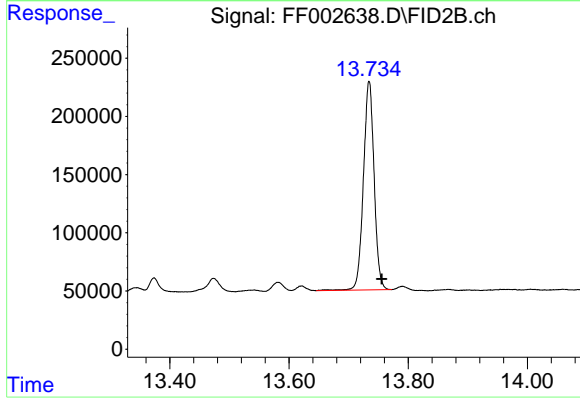
#6 N-OCTADECANE

R.T.: 11.226 min
Delta R.T.: -0.017 min
Response: 2220426
Conc: 13.97 ug/ml



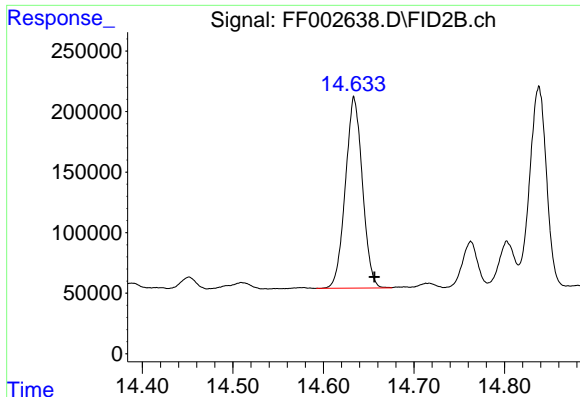
#7 N-EICOSANE

R.T.: 12.536 min
Delta R.T.: -0.019 min
Response: 2212201
Conc: 13.97 ug/ml



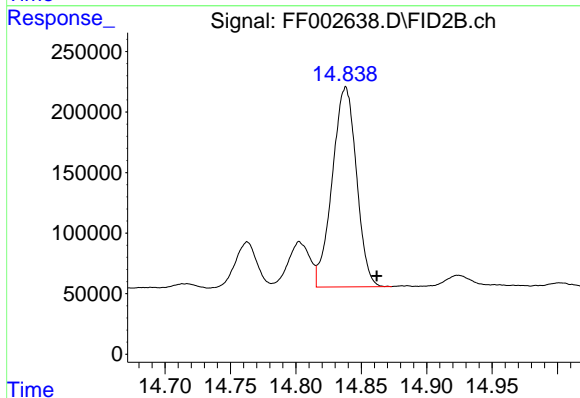
#8 N-DOCOSANE

R.T.: 13.734 min
Delta R.T.: -0.021 min
Response: 2236140
Conc: 14.17 ug/ml



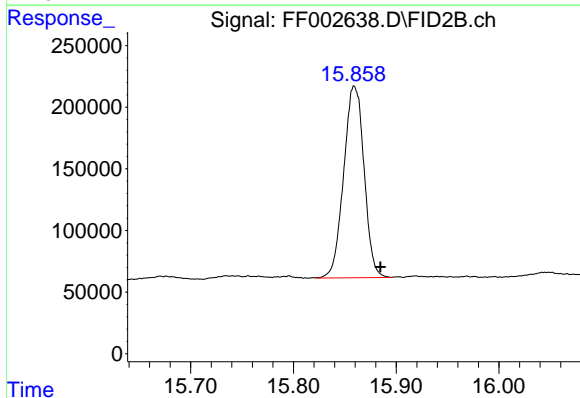
#9 TETRACOSANE-d50 (SURROGATE)

R.T.: 14.634 min
Delta R.T.: -0.022 min
Response: 2062564
Conc: 14.84 ug/ml



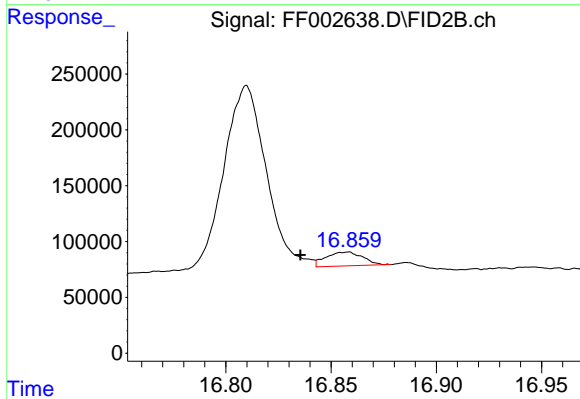
#10 N-TETRACOSANE

R.T.: 14.838 min
Delta R.T.: -0.024 min
Response: 2123873
Conc: 13.58 ug/ml



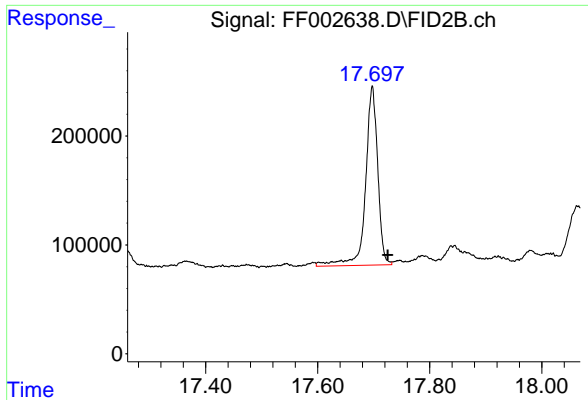
#11 N-HEXACOSANE

R.T.: 15.859 min
Delta R.T.: -0.025 min
Response: 2144023
Conc: 13.77 ug/ml



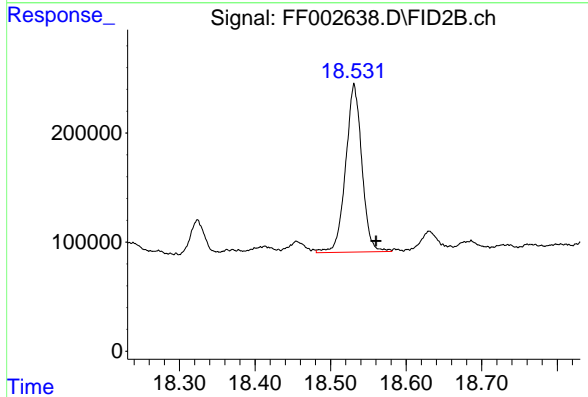
#12 N-OCTACOSANE

R.T.: 16.858 min
Delta R.T.: 0.022 min
Response: 151817
Conc: 0.98 ug/ml



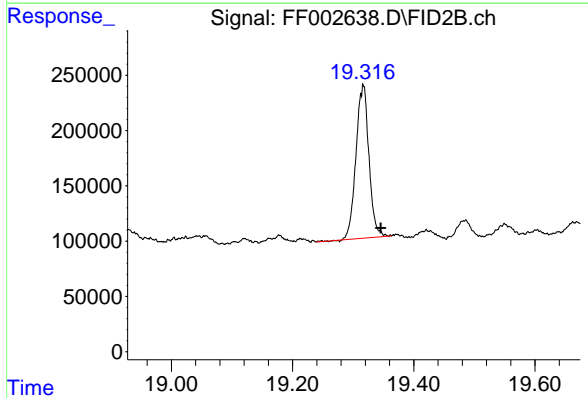
#13 N-TRIACONTANE

R.T.: 17.698 min
Delta R.T.: -0.028 min
Response: 2487270
Conc: 16.03 ug/ml



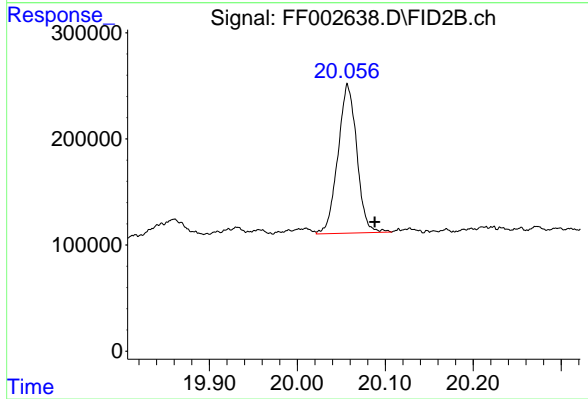
#14 N-DOTRIACONTANE

R.T.: 18.531 min
Delta R.T.: -0.029 min
Response: 2295914
Conc: 14.81 ug/ml



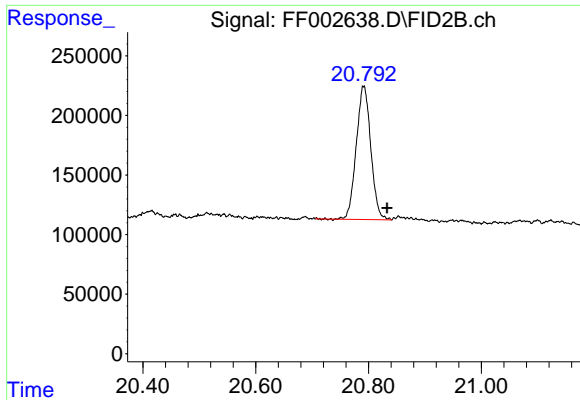
#15 N-TETRATRIACONTANE

R.T.: 19.317 min
Delta R.T.: -0.028 min
Response: 2061588
Conc: 14.00 ug/ml



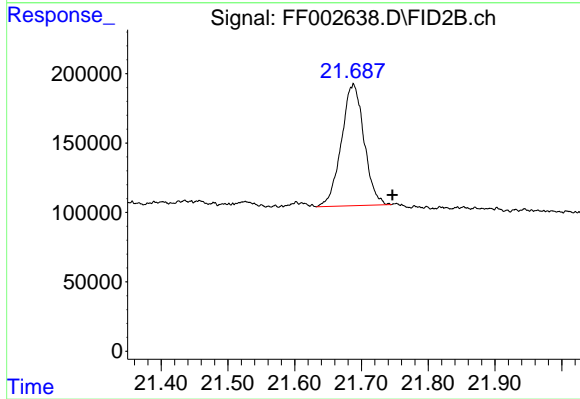
#16 N-HEXATRIACONTANE

R.T.: 20.057 min
Delta R.T.: -0.031 min
Response: 2091214
Conc: 15.25 ug/ml



#17 N-OCTATRIACONTANE

R.T.: 20.791 min
Delta R.T.: -0.041 min
Response: 2004853
Conc: 16.59 ug/ml



#18 N-TETRACONTANE

R.T.: 21.688 min
Delta R.T.: -0.058 min
Response: 2060122
Conc: 17.29 ug/ml