

Data Path : Z:\pestpcbsrv\HPCHEM1\FID_E\Data\FE111125AL\
 Data File : FE056736.D
 Signal(s) : FID1B.ch
 Acq On : 11 Nov 2025 17:13
 Operator : YP\AJ
 Sample : Q3583-04
 Misc :
 ALS Vial : 16 Sample Multiplier: 1

Instrument :
 FID_F
 ClientSampleId :

Integration File: autoint1.e
 Quant Time: Nov 12 01:39:30 2025
 Quant Method : Z:\pestpcbsrv\HPCHEM1\FID_E\methods\Aliphatic EPH 103025.M
 Quant Title : GC Extractables
 QLast Update : Thu Oct 30 12:50:27 2025
 Response via : Initial Calibration
 Integrator: ChemStation

Volume Inj. : 1 ul
 Signal Phase : Rxi-1ms
 Signal Info : 20M x 0.18mm x 0.18um

Compound	R.T.	Response	Conc Units

System Monitoring Compounds			
9) S ortho-Terphenyl (SURR)	11.965	4278030	20.478 ug/ml
Spiked Amount	50.000	Recovery	= 40.96%
12) S 1-chlorooctadecane (S...	13.404	2939814	18.246 ug/ml
Spiked Amount	50.000	Recovery	= 36.49%
Target Compounds			
10) T n-Eicosane (C20)	13.037f	157235	0.844 ug/ml

(f)=RT Delta > 1/2 Window

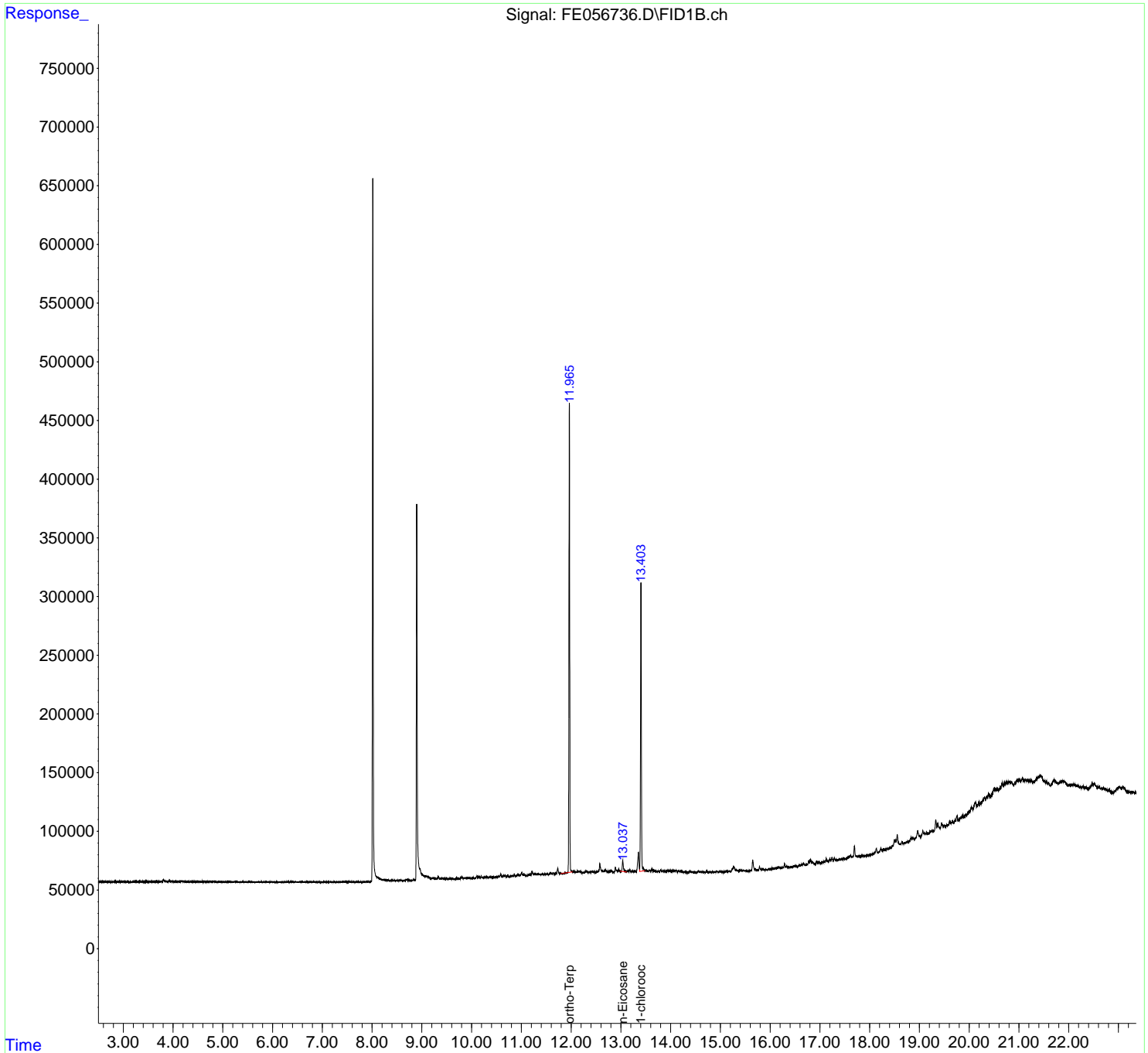
(m)=manual int.

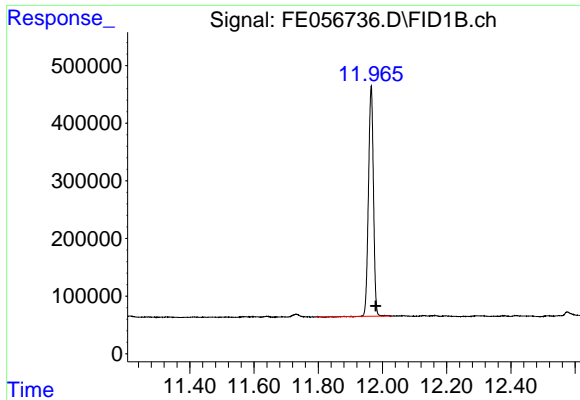
Data Path : Z:\pestpcbsrv\HPCHEM1\FID_E\Data\FE111125AL\
 Data File : FE056736.D
 Signal(s) : FID1B.ch
 Acq On : 11 Nov 2025 17:13
 Operator : YP\AJ
 Sample : Q3583-04
 Misc :
 ALS Vial : 16 Sample Multiplier: 1

Instrument :
 FID_F
 ClientSampleId :

Integration File: autoint1.e
 Quant Time: Nov 12 01:39:30 2025
 Quant Method : Z:\pestpcbsrv\HPCHEM1\FID_E\methods\Aliphatic EPH 103025.M
 Quant Title : GC Extractables
 QLast Update : Thu Oct 30 12:50:27 2025
 Response via : Initial Calibration
 Integrator: ChemStation

Volume Inj. : 1 ul
 Signal Phase : Rxi-1ms
 Signal Info : 20M x 0.18mm x 0.18um

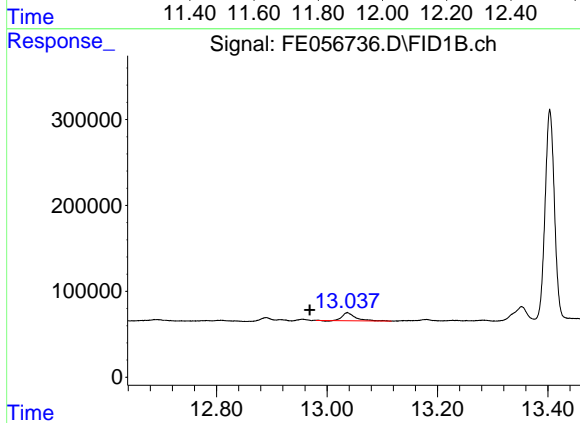




#9 ortho-Terphenyl (SURR)

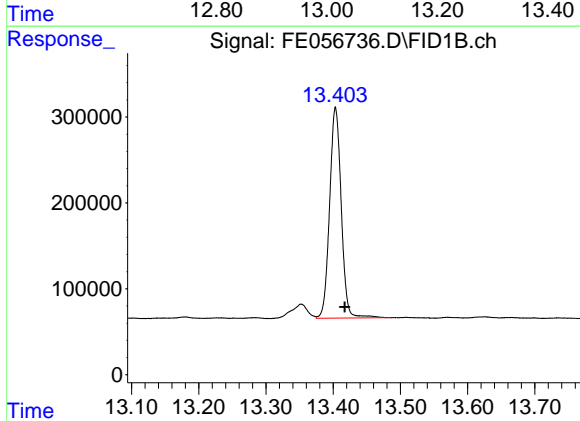
R.T.: 11.965 min
 Delta R.T.: -0.014 min
 Response: 4278030
 Conc: 20.48 ug/ml

Instrument :
 FID_F
 ClientSampleId :



#10 n-Eicosane (C20)

R.T.: 13.037 min
 Delta R.T.: 0.068 min
 Response: 157235
 Conc: 0.84 ug/ml



#12 1-chlorooctadecane (SURR)

R.T.: 13.404 min
 Delta R.T.: -0.014 min
 Response: 2939814
 Conc: 18.25 ug/ml