

Data Path : Z:\pestpcbsrv\HPCHEM1\FID\_E\Data\FE111125AL\  
 Data File : FE056737.D  
 Signal(s) : FID1B.ch  
 Acq On : 11 Nov 2025 17:43  
 Operator : YP\AJ  
 Sample : Q3583-05  
 Misc :  
 ALS Vial : 17 Sample Multiplier: 1

Instrument :  
 FID\_F  
 ClientSampleId :

Integration File: autoint1.e  
 Quant Time: Nov 12 01:39:51 2025  
 Quant Method : Z:\pestpcbsrv\HPCHEM1\FID\_E\methods\Aliphatic EPH 103025.M  
 Quant Title : GC Extractables  
 QLast Update : Thu Oct 30 12:50:27 2025  
 Response via : Initial Calibration  
 Integrator: ChemStation

Volume Inj. : 1 ul  
 Signal Phase : Rxi-1ms  
 Signal Info : 20M x 0.18mm x 0.18um

Compound	R.T.	Response	Conc Units
-----			
System Monitoring Compounds			
9) S ortho-Terphenyl (SURR)	11.964	4461714	21.357 ug/ml
Spiked Amount	50.000	Recovery	= 42.71%
12) S 1-chlorooctadecane (S...	13.403	3066311	19.032 ug/ml
Spiked Amount	50.000	Recovery	= 38.06%
Target Compounds			
10) T n-Eicosane (C20)	13.036f	182589	0.980 ug/ml
-----			

(f)=RT Delta > 1/2 Window

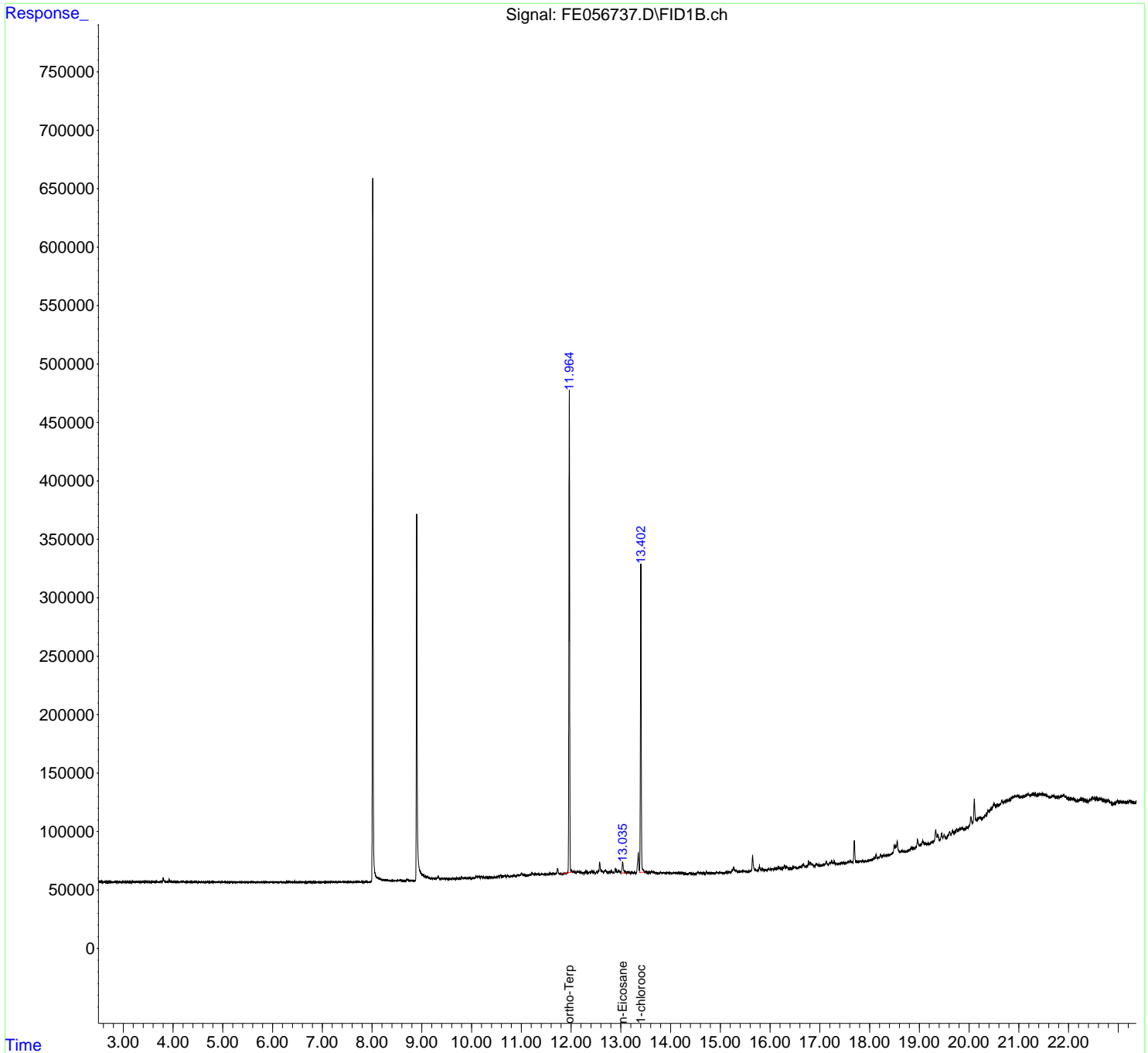
(m)=manual int.

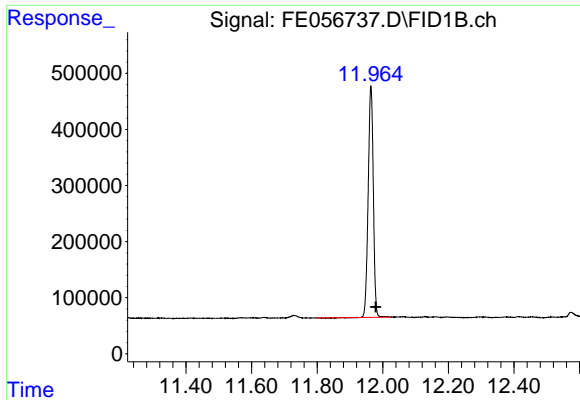
Data Path : Z:\pestpcbsrv\HPCHEM1\FID\_E\Data\FE111125AL\  
 Data File : FE056737.D  
 Signal(s) : FID1B.ch  
 Acq On : 11 Nov 2025 17:43  
 Operator : YP\AJ  
 Sample : Q3583-05  
 Misc :  
 ALS Vial : 17 Sample Multiplier: 1

Instrument :  
 FID\_F  
 ClientSampleId :

Integration File: autoint1.e  
 Quant Time: Nov 12 01:39:51 2025  
 Quant Method : Z:\pestpcbsrv\HPCHEM1\FID\_E\methods\Aliphatic EPH 103025.M  
 Quant Title : GC Extractables  
 QLast Update : Thu Oct 30 12:50:27 2025  
 Response via : Initial Calibration  
 Integrator: ChemStation

Volume Inj. : 1 ul  
 Signal Phase : Rxi-1ms  
 Signal Info : 20M x 0.18mm x 0.18um

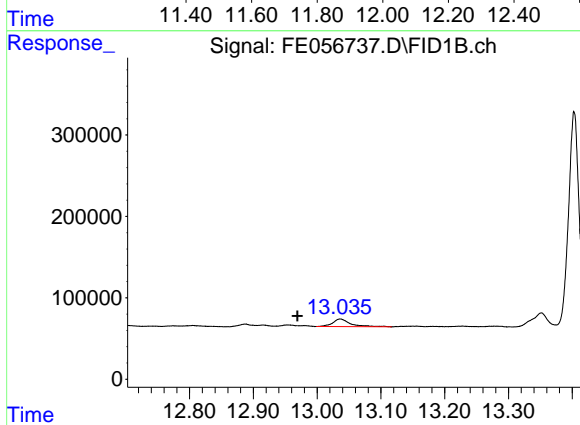




#9 ortho-Terphenyl (SURR)

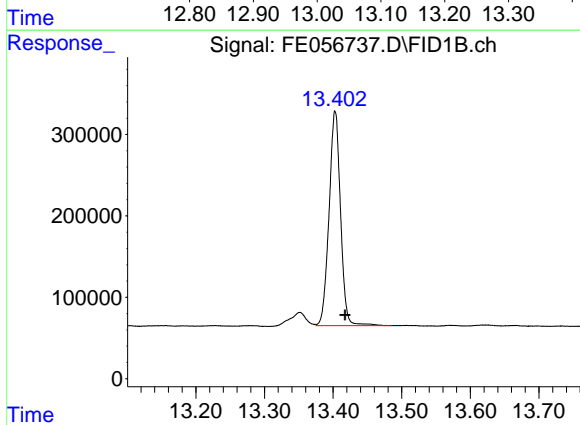
R.T.: 11.964 min  
 Delta R.T.: -0.015 min  
 Response: 4461714  
 Conc: 21.36 ug/ml

Instrument :  
 FID\_F  
 ClientSampleId :



#10 n-Eicosane (C20)

R.T.: 13.036 min  
 Delta R.T.: 0.067 min  
 Response: 182589  
 Conc: 0.98 ug/ml



#12 1-chlorooctadecane (SURR)

R.T.: 13.403 min  
 Delta R.T.: -0.014 min  
 Response: 3066311  
 Conc: 19.03 ug/ml