

Data Path : Z:\pestpcbsrv\HPCHEM1\FID_E\Data\FE111125AL\
 Data File : FE056740.D
 Signal(s) : FID1B.ch
 Acq On : 11 Nov 2025 19:44
 Operator : YP\AJ
 Sample : I.BLK
 Misc :
 ALS Vial : 1 Sample Multiplier: 1

Instrument :
 FID_F
 ClientSampleId :

Integration File: autoint1.e
 Quant Time: Nov 12 01:41:01 2025
 Quant Method : Z:\pestpcbsrv\HPCHEM1\FID_E\methods\Aliphatic EPH 103025.M
 Quant Title : GC Extractables
 QLast Update : Thu Oct 30 12:50:27 2025
 Response via : Initial Calibration
 Integrator: ChemStation

Volume Inj. : 1 ul
 Signal Phase : Rxi-1ms
 Signal Info : 20M x 0.18mm x 0.18um

Compound	R.T.	Response	Conc Units

System Monitoring Compounds			
Target Compounds			

(f)=RT Delta > 1/2 Window

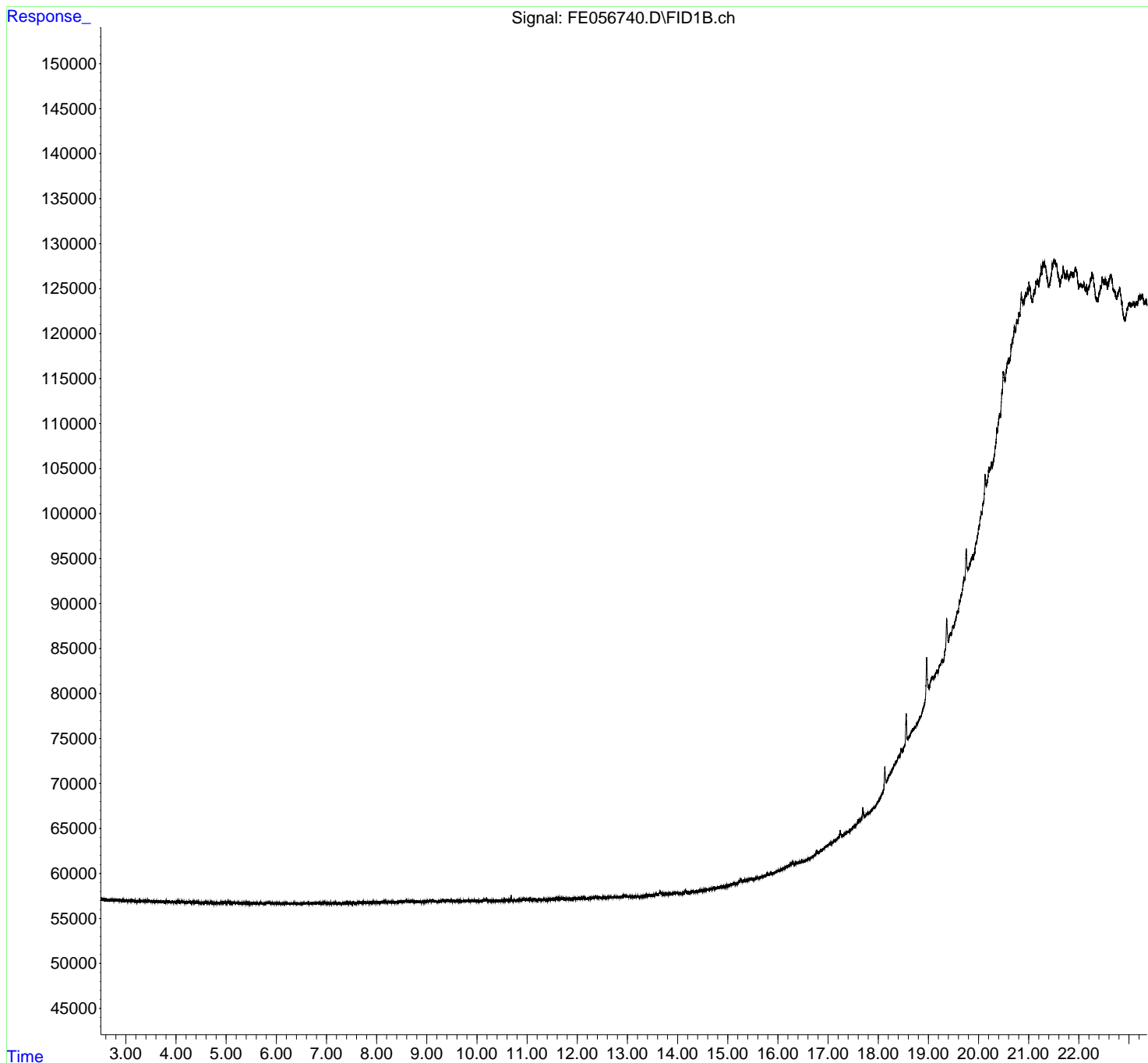
(m)=manual int.

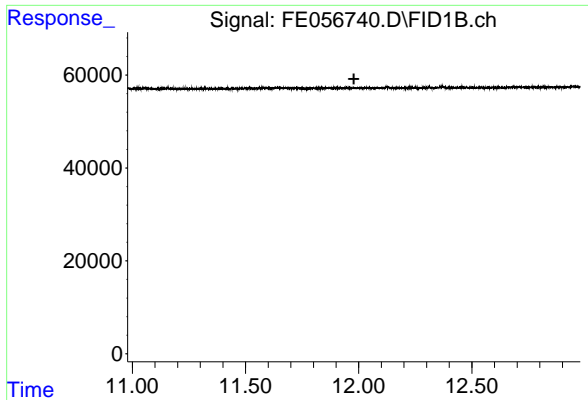
Data Path : Z:\pestpcbsrv\HPCHEM1\FID_E\Data\FE111125AL\
 Data File : FE056740.D
 Signal(s) : FID1B.ch
 Acq On : 11 Nov 2025 19:44
 Operator : YP\AJ
 Sample : I.BLK
 Misc :
 ALS Vial : 1 Sample Multiplier: 1

Instrument :
 FID_F
 ClientSampleId :

Integration File: autoint1.e
 Quant Time: Nov 12 01:41:01 2025
 Quant Method : Z:\pestpcbsrv\HPCHEM1\FID_E\methods\Aliphatic EPH 103025.M
 Quant Title : GC Extractables
 QLast Update : Thu Oct 30 12:50:27 2025
 Response via : Initial Calibration
 Integrator: ChemStation

Volume Inj. : 1 ul
 Signal Phase : Rxi-1ms
 Signal Info : 20M x 0.18mm x 0.18um

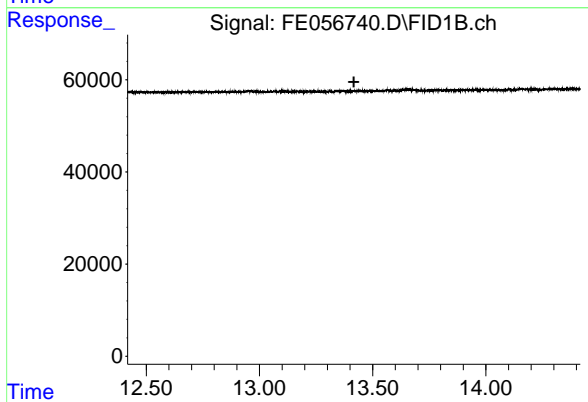




#9 ortho-Terphenyl (SURR)

R.T.: 0.000 min
Exp R.T. : 11.979 min
Response: 0
Conc: N.D.

Instrument :
FID_F
ClientSampleId :



#12 1-chlorooctadecane (SURR)

R.T.: 0.000 min
Exp R.T. : 13.417 min
Response: 0
Conc: N.D.