

Data Path : Z:\pestpcbsrv\HPCHEM1\FID_F\Data\FF121223AL\
 Data File : FF013840.D
 Signal(s) : FID2B.ch
 Acq On : 12 Dec 2023 16:25
 Operator : YP\AJ
 Sample : 05745-02
 Misc :
 ALS Vial : 41 Sample Multiplier: 1

Instrument :
 FID_F
 ClientSampleId :
 WC-1-EPH

Integration File: autoint1.e
 Quant Time: Dec 12 22:37:12 2023
 Quant Method : Z:\pestpcbsrv\HPCHEM1\FID_F\Method\Aliphatic EPH 121123.M
 Quant Title : GC Extractables
 QLast Update : Tue Dec 12 06:36:20 2023
 Response via : Initial Calibration
 Integrator: ChemStation

Volume Inj. : 1 ul
 Signal Phase : Rxi-1ms
 Signal Info : 20M x 0.18mm x 0.18um

Compound	R.T.	Response	Conc Units

System Monitoring Compounds			
9) S ortho-Terphenyl (SURR)	11.869	6111646	41.473 ug/ml
Spiked Amount	50.000	Recovery	= 82.95%
12) S 1-chlorooctadecane (S...	13.309	4311903	40.501 ug/ml
Spiked Amount	50.000	Recovery	= 81.00%
Target Compounds			
10) T n-Eicosane (C20)	12.913	82486	0.689 ug/ml
14) T n-Tetracosane (C24)	15.133	31685	0.277 ug/ml
16) T n-Octacosane (C28)	17.137	56120	0.511 ug/ml
17) T n-Tricontane (C30)	18.027	93586	0.842 ug/ml
18) T n-Dotriacontane (C32)	18.861	108981	0.980 ug/ml
19) T n-Tetratriacontane (C34)	19.700f	49335	0.458 ug/ml

(f)=RT Delta > 1/2 Window

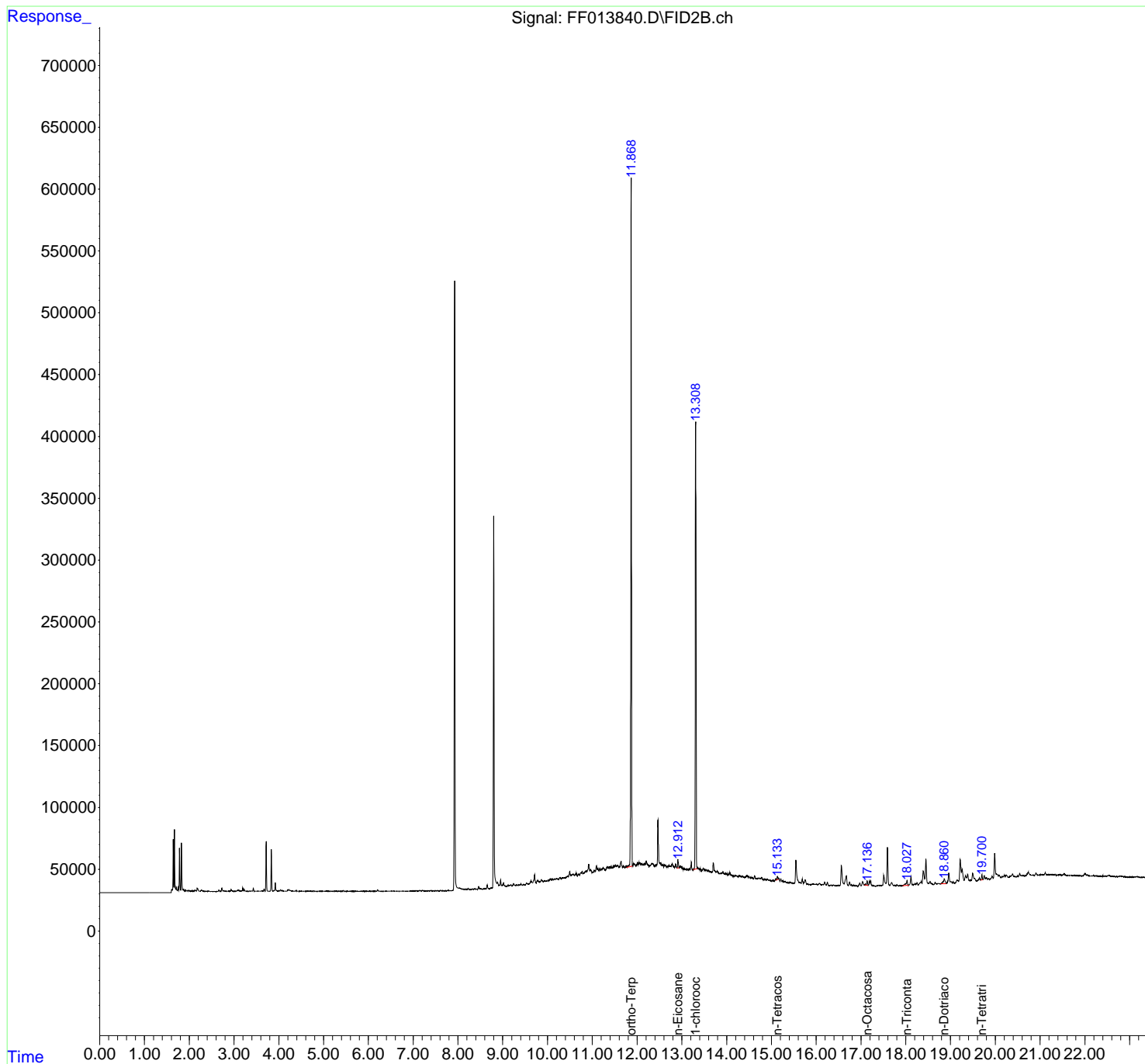
(m)=manual int.

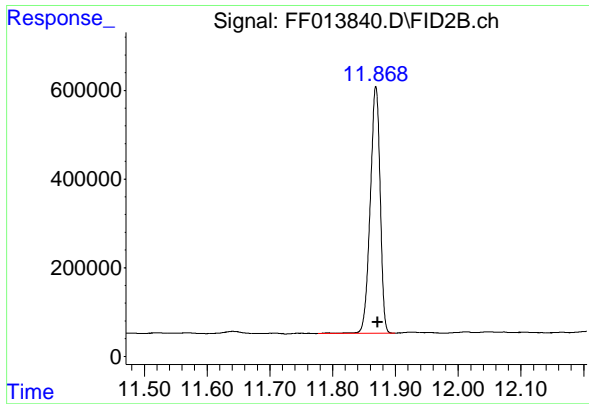
Data Path : Z:\pestpcbsrv\HPCHEM1\FID_F\Data\FF121223AL\
 Data File : FF013840.D
 Signal(s) : FID2B.ch
 Acq On : 12 Dec 2023 16:25
 Operator : YP\AJ
 Sample : 05745-02
 Misc :
 ALS Vial : 41 Sample Multiplier: 1

Instrument :
 FID_F
 ClientSampleId :
 WC-1-EPH

Integration File: autoint1.e
 Quant Time: Dec 12 22:37:12 2023
 Quant Method : Z:\pestpcbsrv\HPCHEM1\FID_F\Method\Aliphatic EPH 121123.M
 Quant Title : GC Extractables
 QLast Update : Tue Dec 12 06:36:20 2023
 Response via : Initial Calibration
 Integrator: ChemStation

Volume Inj. : 1 ul
 Signal Phase : Rxi-1ms
 Signal Info : 20M x 0.18mm x 0.18um

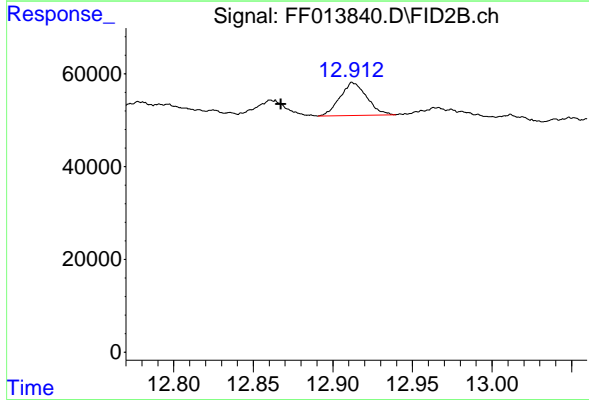




#9 ortho-Terphenyl (SURR)

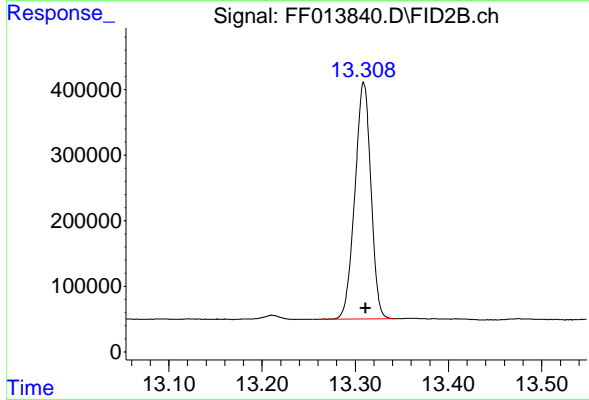
R.T.: 11.869 min
 Delta R.T.: -0.003 min
 Response: 6111646
 Conc: 41.47 ug/ml

Instrument :
 FID_F
 ClientSampleId :
 WC-1-EPH



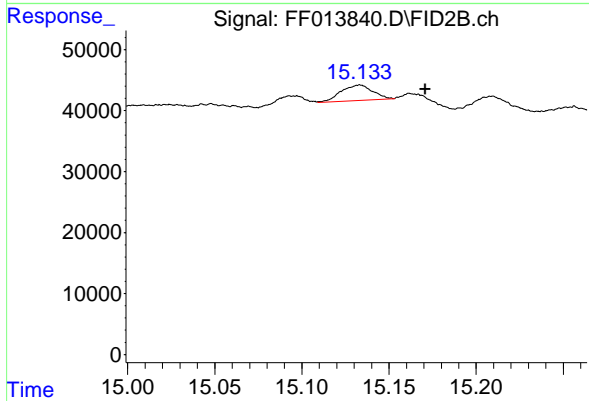
#10 n-Eicosane (C20)

R.T.: 12.913 min
 Delta R.T.: 0.045 min
 Response: 82486
 Conc: 0.69 ug/ml



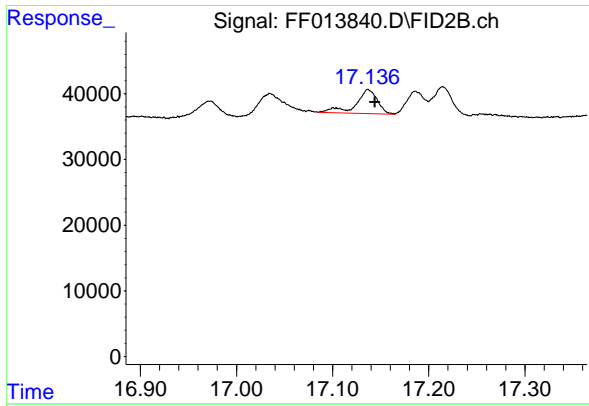
#12 1-chlorooctadecane (SURR)

R.T.: 13.309 min
 Delta R.T.: -0.002 min
 Response: 4311903
 Conc: 40.50 ug/ml



#14 n-Tetracosane (C24)

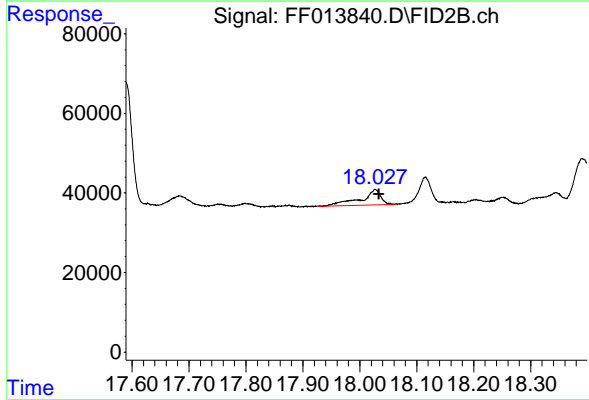
R.T.: 15.133 min
 Delta R.T.: -0.038 min
 Response: 31685
 Conc: 0.28 ug/ml



#16 n-Octacosane (C28)

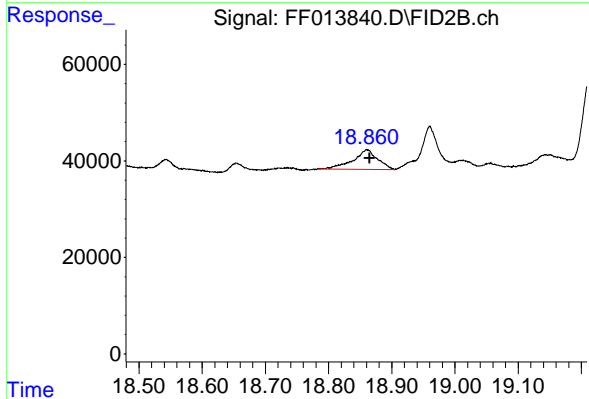
R.T.: 17.137 min
Delta R.T.: -0.007 min
Response: 56120
Conc: 0.51 ug/ml

Instrument :
FID_F
ClientSampleId :
WC-1-EPH



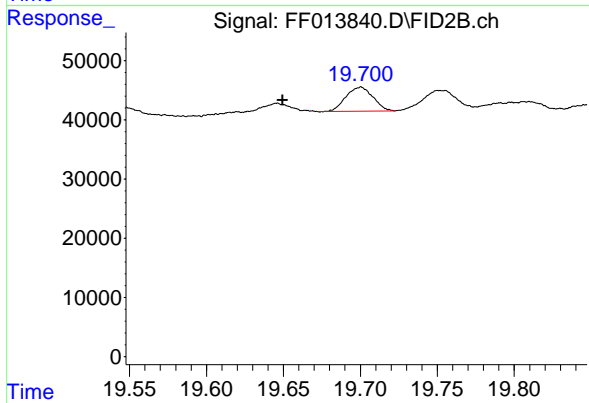
#17 n-Tricontane (C30)

R.T.: 18.027 min
Delta R.T.: -0.006 min
Response: 93586
Conc: 0.84 ug/ml



#18 n-Dotriacontane (C32)

R.T.: 18.861 min
Delta R.T.: -0.004 min
Response: 108981
Conc: 0.98 ug/ml



#19 n-Tetratriacontane (C34)

R.T.: 19.700 min
Delta R.T.: 0.051 min
Response: 49335
Conc: 0.46 ug/ml