

Data Path : P:\HPCHEM1\FID_F\Data\FF021418\
 Data File : FF000113.D
 Signal(s) : FID2B.ch
 Acq On : 14 Feb 2018 12:48
 Operator : UA\AJ
 Sample : J1161-01
 Misc : FID_D LOD\MDL SOIL 1 PPB
 ALS Vial : 59 Sample Multiplier: 1

Integration File: autoint1.e
 Quant Time: Feb 15 08:56:11 2018
 Quant Method : P:\HPCHEM1\FID_F\Method\FF020118.M
 Quant Title :
 QLast Update : Fri Feb 02 10:05:00 2018
 Response via : Initial Calibration
 Integrator: ChemStation

Volume Inj. : 1uL
 Signal Phase : Rxi-1ms
 Signal Info : 20mx0.18mmx0.18um

Compound	R.T.	Response	Conc Units

System Monitoring Compounds			
9) S TETRACOSANE-d50 (SURR...	14.629	2761710	24.248 ug/ml
Target Compounds			
1) N-OCTANE	2.284	120560	0.796 ug/ml
2) N-DECANE	4.374	137224	0.886 ug/ml
3) N-DODECANE	6.390	135091	0.875 ug/ml
14) N-DOTRIACONTANE	18.519	204998	2.079 ug/ml

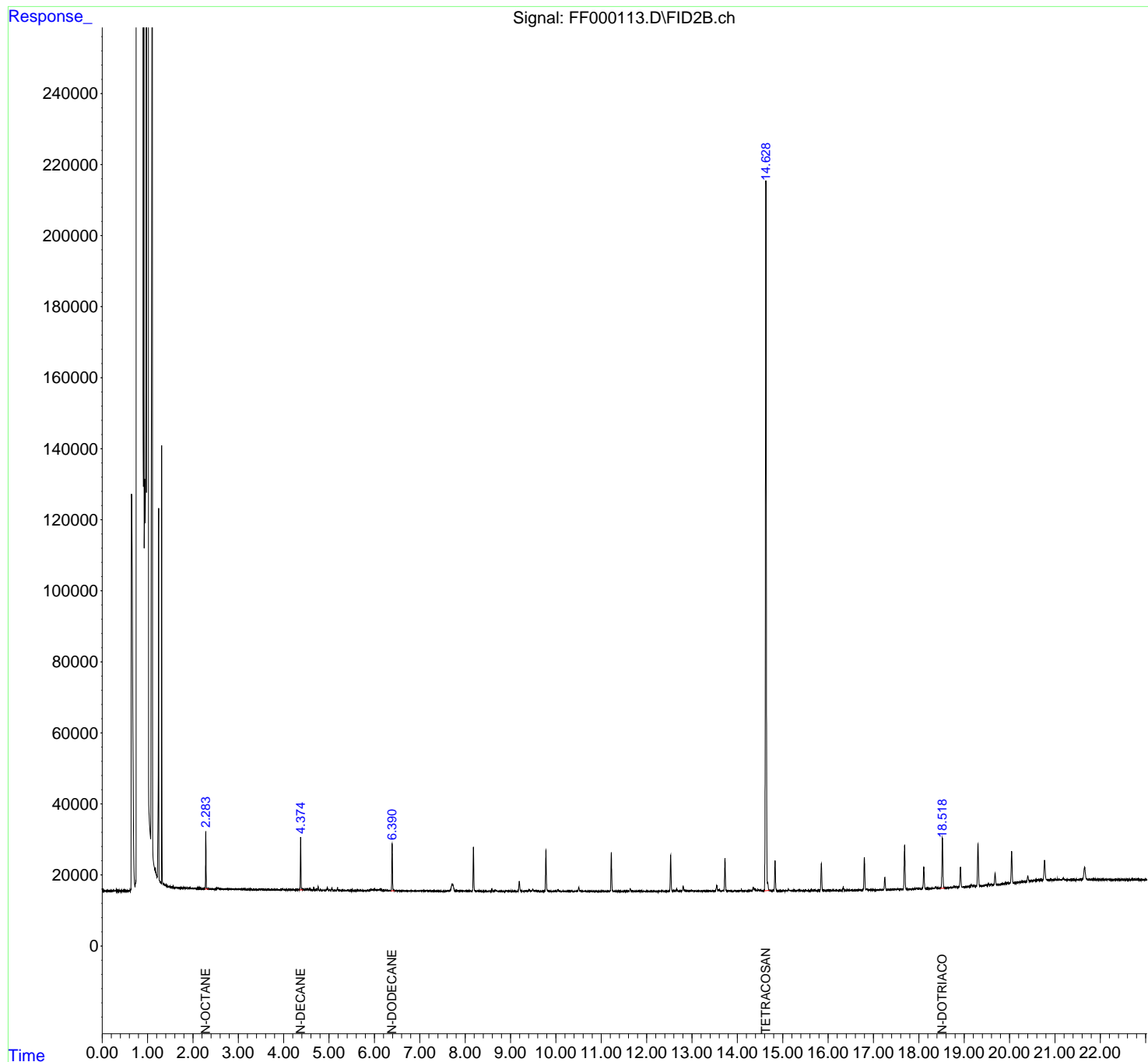
(f)=RT Delta > 1/2 Window

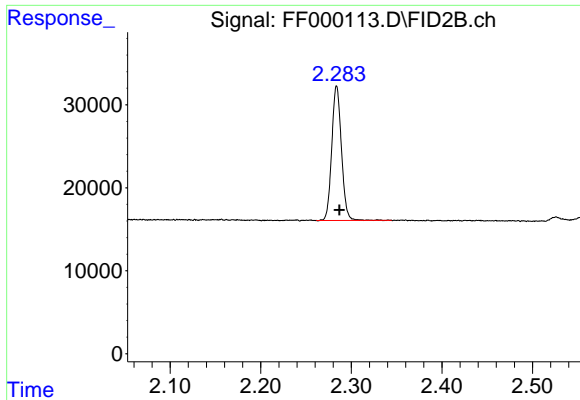
(m)=manual int.

Data Path : P:\HPCHEM1\FID_F\Data\FF021418\
 Data File : FF000113.D
 Signal(s) : FID2B.ch
 Acq On : 14 Feb 2018 12:48
 Operator : UA\AJ
 Sample : J1161-01
 Misc : FID_D LOD\MDL SOIL 1 PPB
 ALS Vial : 59 Sample Multiplier: 1

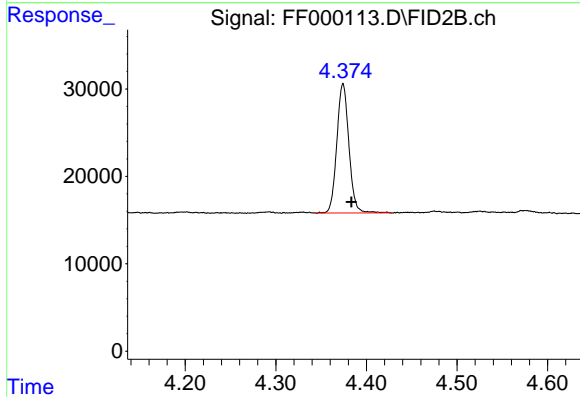
Integration File: autoint1.e
 Quant Time: Feb 15 08:56:11 2018
 Quant Method : P:\HPCHEM1\FID_F\Method\FF020118.M
 Quant Title :
 QLast Update : Fri Feb 02 10:05:00 2018
 Response via : Initial Calibration
 Integrator: ChemStation

Volume Inj. : 1uL
 Signal Phase : Rxi-1ms
 Signal Info : 20mx0.18mmx0.18um

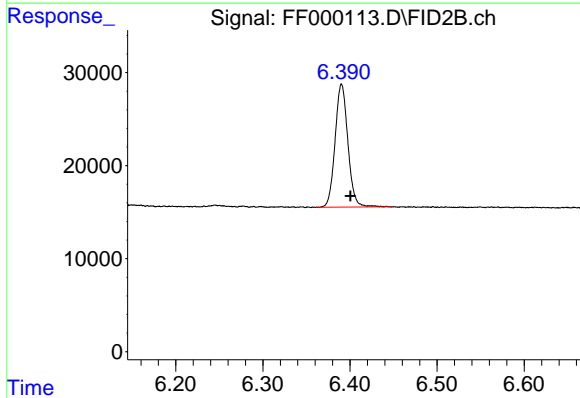




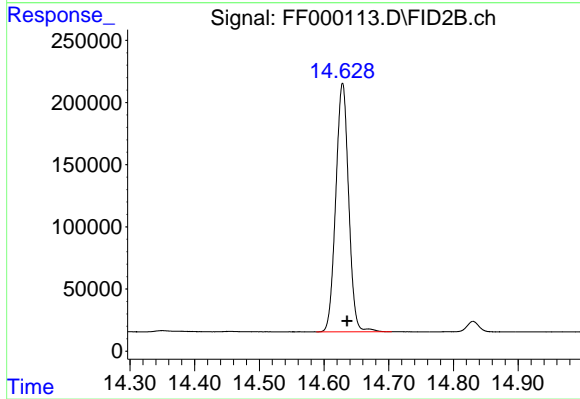
#1 N-OCTANE
R.T.: 2.284 min
Delta R.T.: -0.003 min
Response: 120560
Conc: 0.80 ug/ml



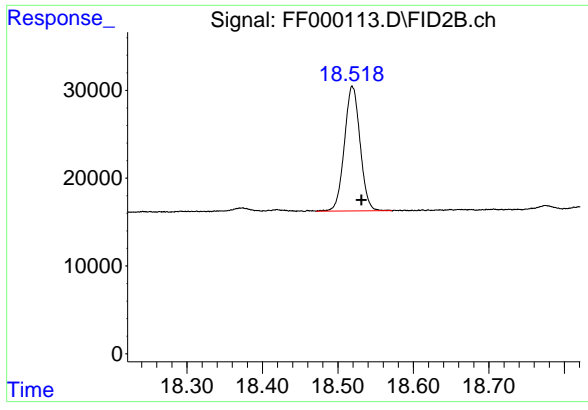
#2 N-DECANE
R.T.: 4.374 min
Delta R.T.: -0.009 min
Response: 137224
Conc: 0.89 ug/ml



#3 N-DODECANE
R.T.: 6.390 min
Delta R.T.: -0.010 min
Response: 135091
Conc: 0.87 ug/ml



#9 TETRACOSANE-d50 (SURROGATE)
R.T.: 14.629 min
Delta R.T.: -0.007 min
Response: 2761710
Conc: 24.25 ug/ml



#14 N-DOTRIACONTANE

R.T.: 18.519 min
Delta R.T.: -0.012 min
Response: 204998
Conc: 2.08 ug/ml