

2/10/002

Test results

Aquakem 7.2AQ1

Page: 1

CHEMTECH
284 Sheffield Street,
Mountainside, NJ 07092
Reviewed by : AS

Instrument ID : Konelab

2/25/2019 14:24

Test: Total CN

Sample Id	Result <i>Mg/d</i>	Dil. 1 +	Response	Errors
ICV1	97.308	0.0	0.092	
ICB1	-0.362	0.0	0.004	
CCV1	248.267	0.0	0.229	
CCB1	-0.529	0.0	0.004	
PB117336BL	-0.300	0.0	0.004	
PB117336BS	98.683	0.0	0.094	
LOWPB117336	9.588	0.0	0.013	
HIGHPB117336	494.230	0.0	0.451	
K1348-03	1.505	0.0	0.006	
K1348-03DUP	1.030	0.0	0.005	
K1348-03MS	37.141	0.0	0.038	
K1348-03MSD	36.710	0.0	0.037	
K1348-05	1.528	0.0	0.006	
K1356-09	1.090	0.0	0.005	
CCV2	248.506	0.0	0.229	
CCB2	-0.339	0.0	0.004	
K1586-03	0.863	0.0	0.005	
K1595-01	38.957	0.0	0.040	
K1595-03	5.536	0.0	0.009	
K1595-05	56.316	0.0	0.055	
K1595-07	1.160	0.0	0.005	
PB117318BL	-0.453	0.0	0.004	
PB117318BS	95.093	0.0	0.090	
K1560-01	1.687	0.0	0.006	
K1560-02	9.429	0.0	0.013	
CCV3	249.624	0.0	0.230	
CCB3	-0.185	0.0	0.004	
PB117315BL	-0.202	0.0	0.004	
PB117315BS	99.016	0.0	0.094	
K1560-07	2.407	0.0	0.006	
K1560-08	9.574	0.0	0.013	
K1356-11	0.800	0.0	0.005	
K1592-03	1.994	0.0	0.006	
CCV4	259.809	0.0	0.239	
CCB4	-0.283	0.0	0.004	

N 35
Mean 60.149
SD 110.6983
CV% 184.04

AS

Aquakem v. 7.2AQ1

Results from time period:

Mon Feb 25 12:52:56 2019

Mon Feb 25 14:20:39 2019

Sample Id	Sam/Ctr/c/	Test short	Test type	Result	Result unit	Result date and time	Stat
0.OPPBCN	A	Total CN	P	-0.7519	µg/l	2/25/2019 12:52:56	
5.OPPBCN	A	Total CN	P	4.3801	µg/l	2/25/2019 12:52:57	
10PPBCN	A	Total CN	P	9.7039	µg/l	2/25/2019 12:52:58	
50PPBCN	A	Total CN	P	50.2062	µg/l	2/25/2019 12:52:59	
100PPBCN	A	Total CN	P	100.4206	µg/l	2/25/2019 12:53:00	
250PPBCN	A	Total CN	P	252.2675	µg/l	2/25/2019 12:53:01	
500PPBCN	A	Total CN	P	498.7736	µg/l	2/25/2019 12:53:02	
ICV1	S	Total CN	P	97.3076	µg/l	2/25/2019 13:28:56	
ICB1	S	Total CN	P	-0.3615	µg/l	2/25/2019 13:28:57	
CCV1	S	Total CN	P	248.2666	µg/l	2/25/2019 13:28:58	
CCB1	S	Total CN	P	-0.5293	µg/l	2/25/2019 13:28:59	
PB117336BL	S	Total CN	P	-0.2998	µg/l	2/25/2019 13:29:00	
PB117336BS	S	Total CN	P	98.6835	µg/l	2/25/2019 13:29:01	
LOWPB117336	S	Total CN	P	9.5879	µg/l	2/25/2019 13:29:02	
HIGHPB117336	S	Total CN	P	494.2305	µg/l	2/25/2019 13:29:03	
K1348-03	S	Total CN	P	1.505	µg/l	2/25/2019 13:29:04	
K1348-03DUP	S	Total CN	P	1.0305	µg/l	2/25/2019 13:29:05	
K1348-03MS	S	Total CN	P	37.1413	µg/l	2/25/2019 13:29:06	
K1348-03MSD	S	Total CN	P	36.7099	µg/l	2/25/2019 13:36:30	
K1348-05	S	Total CN	P	1.5281	µg/l	2/25/2019 13:36:31	
K1356-09	S	Total CN	P	1.0898	µg/l	2/25/2019 13:36:32	
CCV2	S	Total CN	P	248.5062	µg/l	2/25/2019 13:36:33	
CCB2	S	Total CN	P	-0.339	µg/l	2/25/2019 13:36:34	
K1586-03	S	Total CN	P	0.8633	µg/l	2/25/2019 13:36:35	
K1595-01	S	Total CN	P	38.9567	µg/l	2/25/2019 13:36:37	
K1595-03	S	Total CN	P	5.5356	µg/l	2/25/2019 13:36:38	
K1595-05	S	Total CN	P	56.3162	µg/l	2/25/2019 13:36:39	
K1595-07	S	Total CN	P	1.1603	µg/l	2/25/2019 13:36:40	
PB117318BL	S	Total CN	P	-0.4528	µg/l	2/25/2019 13:44:03	
PB117318BS	S	Total CN	P	95.0934	µg/l	2/25/2019 13:44:04	
K1560-01	S	Total CN	P	1.6867	µg/l	2/25/2019 13:44:06	
K1560-02	S	Total CN	P	9.4294	µg/l	2/25/2019 13:44:08	
CCV3	S	Total CN	P	249.6237	µg/l	2/25/2019 13:44:09	
CCB3	S	Total CN	P	-0.1848	µg/l	2/25/2019 13:44:10	
PB117315BL	S	Total CN	P	-0.2016	µg/l	2/25/2019 13:44:11	
PB117315BS	S	Total CN	P	99.0157	µg/l	2/25/2019 13:44:12	
K1560-07	S	Total CN	P	2.4065	µg/l	2/25/2019 13:51:38	
K1560-08	S	Total CN	P	9.5741	µg/l	2/25/2019 13:51:39	
K1356-11	S	Total CN	P	0.8	µg/l	2/25/2019 13:51:41	
K1592-03	S	Total CN	P	1.994	µg/l	2/25/2019 14:20:34	
CCV4	S	Total CN	P	259.8091	µg/l	2/25/2019 14:20:38	
CCB4	S	Total CN	P	-0.2828	µg/l	2/25/2019 14:20:39	

2/10/002

=====
Calibration results

Aquakem 7.2AQ1

Page: 1

CHEMTECH
284 Sheffield Street,
Mountainside, NJ 07092
Reviewed by : AS

Instrument ID : Konelab

2/25/2019 12:54

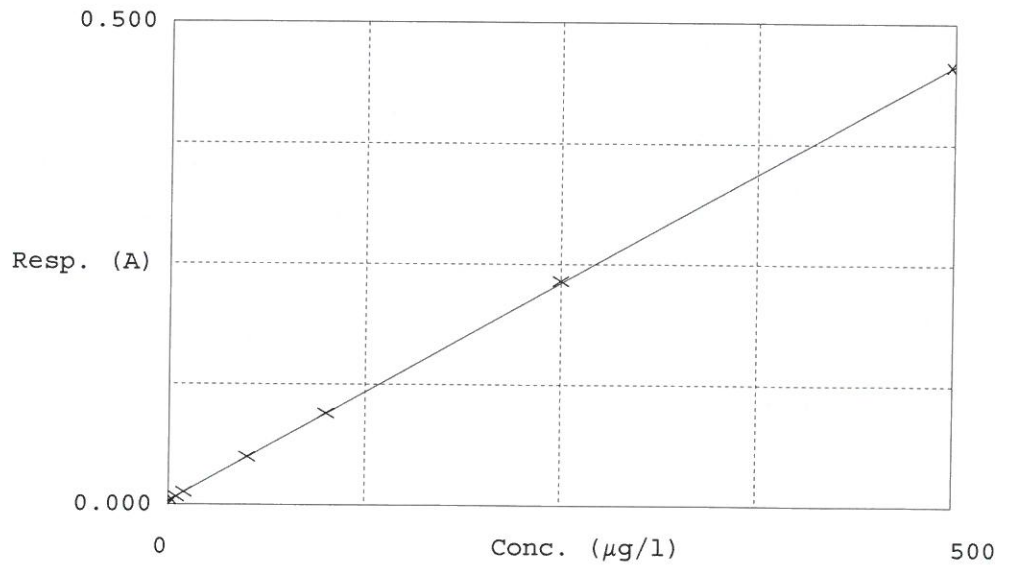
Test Total CN

Accepted 2/25/2019 12:54

Factor 1105
Bias 0.004

Coeff. of det. 0.999962

Errors



	Calibrator	Response	Calc. con.	Conc.	Errors
1	0.0PPBCN	0.004	-0.7519	0.0000	
2	5.0PPBCN	0.008	4.3801	5.0000	
3	10PPBCN	0.013	9.7039	10.0000	
4	50PPBCN	0.050	50.2062	50.0000	
5	100PPBCN	0.095	100.4206	100.0000	
6	250PPBCN	0.233	252.2675	250.0000	
7	500PPBCN	0.456	498.7736	500.0000	