

21101441

Test results

Aquakem 7.2AQ1

Page: 1

CHEMTECH
284 Sheffield Street,
Mountainside, NJ 07092
Reviewed by : AS

Instrument ID : Konelab

3/19/2019 12:30

Test: TKN-NH3

| Sample Id | Result <i>mg/d</i> | Dil. 1 + | Response | Errors |
|-------------|--------------------|----------|----------|--------|
| ICV1 | 4.958 | 0.0 | 1.035 | |
| ICB1 | 0.082 | 0.0 | 0.037 | |
| CCV1 | 4.937 | 0.0 | 1.031 | |
| CCB1 | 0.084 | 0.0 | 0.037 | |
| PB117995BL | 0.084 | 0.0 | 0.037 | |
| PB117995BS | 5.014 | 0.0 | 1.046 | |
| K1887-01 | 0.690 | 0.0 | 0.161 | |
| K1887-01DUP | 0.689 | 0.0 | 0.161 | |
| K1887-01MS | 5.696 | 0.0 | 1.186 | |
| K1887-01MSD | 5.735 | 0.0 | 1.194 | |
| K1887-02 | 4.786 | 0.0 | 1.000 | |
| K1887-03 | 3.555 | 0.0 | 0.748 | |
| K1887-04 | 3.675 | 0.0 | 0.772 | |
| K1909-01 | 0.458 | 0.0 | 0.113 | |
| CCV2 | 4.991 | 0.0 | 1.042 | |
| CCB2 | 0.082 | 0.0 | 0.036 | |
| K1909-02 | 0.541 | 0.0 | 0.130 | |
| K1909-03 | 0.667 | 0.0 | 0.156 | |
| K1909-04 | 0.529 | 0.0 | 0.128 | |
| K1909-05 | 0.533 | 0.0 | 0.129 | |
| CCV3 | 5.128 | 0.0 | 1.070 | |
| CCB3 | 0.094 | 0.0 | 0.039 | |

N 22
Mean 2.409
SD 2.3347
CV% 96.90

AS

Aquakem v. 7.2AQ1

Results from time period:

Tue Mar 19 10:32:38 2019

Tue Mar 19 12:26:35 2019

| Sample Id | Sam/Ctr/c/ | Test short | Test type | Result | Result unit | Result date and time | Stat |
|-------------|------------|------------|-----------|---------|-------------|----------------------|------|
| 0.5PPM | A | TKN-NH3 | P | 0.559 | mg/l | 3/19/2019 10:32:38 | |
| 1.0PPM | A | TKN-NH3 | P | 1.0473 | mg/l | 3/19/2019 10:32:39 | |
| 2.5PPM | A | TKN-NH3 | P | 2.5393 | mg/l | 3/19/2019 10:32:40 | |
| 5.0PPM | A | TKN-NH3 | P | 4.876 | mg/l | 3/19/2019 10:32:41 | |
| 6.7PPM | A | TKN-NH3 | P | 6.4683 | mg/l | 3/19/2019 10:32:42 | |
| 10.0PPM | A | TKN-NH3 | P | 10.1768 | mg/l | 3/19/2019 10:32:43 | |
| ICV1 | S | TKN-NH3 | P | 4.9576 | mg/l | 3/19/2019 12:15:43 | |
| ICB1 | S | TKN-NH3 | P | 0.0821 | mg/l | 3/19/2019 12:15:44 | |
| CCV1 | S | TKN-NH3 | P | 4.9369 | mg/l | 3/19/2019 12:15:45 | |
| CCB1 | S | TKN-NH3 | P | 0.0844 | mg/l | 3/19/2019 12:15:46 | |
| PB117995BL | S | TKN-NH3 | P | 0.0839 | mg/l | 3/19/2019 12:15:47 | |
| PB117995BS | S | TKN-NH3 | P | 5.0143 | mg/l | 3/19/2019 12:15:48 | |
| K1887-01 | S | TKN-NH3 | P | 0.6899 | mg/l | 3/19/2019 12:15:49 | |
| K1887-01DUP | S | TKN-NH3 | P | 0.6894 | mg/l | 3/19/2019 12:15:50 | |
| K1887-01MS | S | TKN-NH3 | P | 5.6961 | mg/l | 3/19/2019 12:15:51 | |
| K1887-01MSD | S | TKN-NH3 | P | 5.7349 | mg/l | 3/19/2019 12:15:52 | |
| K1887-02 | S | TKN-NH3 | P | 4.7863 | mg/l | 3/19/2019 12:15:53 | |
| K1887-03 | S | TKN-NH3 | P | 3.5555 | mg/l | 3/19/2019 12:15:54 | |
| K1887-04 | S | TKN-NH3 | P | 3.675 | mg/l | 3/19/2019 12:26:24 | |
| K1909-01 | S | TKN-NH3 | P | 0.4577 | mg/l | 3/19/2019 12:26:25 | |
| CCV2 | S | TKN-NH3 | P | 4.9912 | mg/l | 3/19/2019 12:26:26 | |
| CCB2 | S | TKN-NH3 | P | 0.0819 | mg/l | 3/19/2019 12:26:27 | |
| K1909-02 | S | TKN-NH3 | P | 0.5409 | mg/l | 3/19/2019 12:26:28 | |
| K1909-03 | S | TKN-NH3 | P | 0.6666 | mg/l | 3/19/2019 12:26:29 | |
| K1909-04 | S | TKN-NH3 | P | 0.5291 | mg/l | 3/19/2019 12:26:30 | |
| K1909-05 | S | TKN-NH3 | P | 0.5326 | mg/l | 3/19/2019 12:26:31 | |
| CCV3 | S | TKN-NH3 | P | 5.1276 | mg/l | 3/19/2019 12:26:34 | |
| CCB3 | S | TKN-NH3 | P | 0.094 | mg/l | 3/19/2019 12:26:35 | |

CHEMTECH
 284 Sheffield Street,
 Mountainside, NJ 07092
 Reviewed by : AS

Instrument ID : Konelab

3/19/2019 10:57

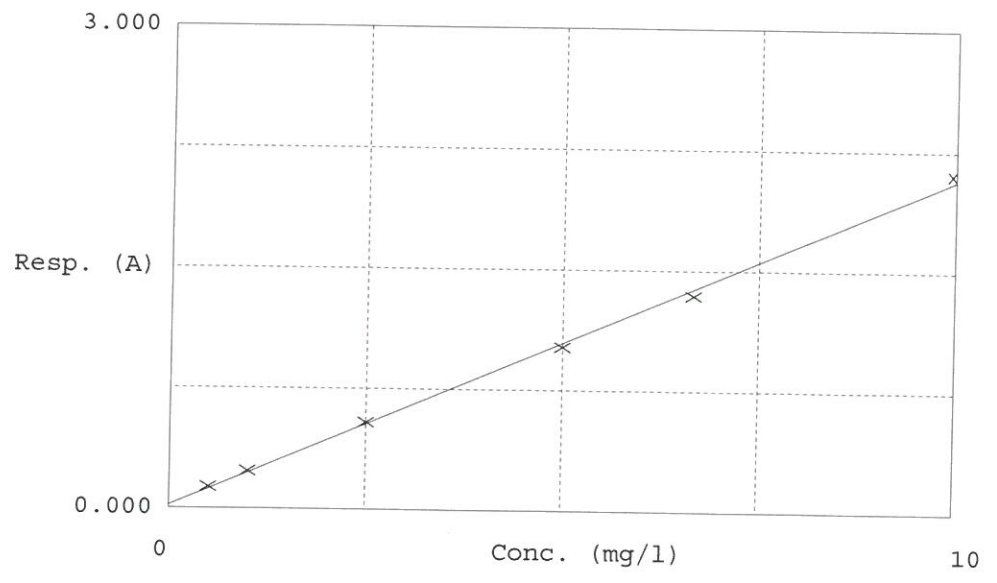
Test TKN-NH3

Accepted 3/19/2019 10:57

Factor 4.884
 Bias 0.020

Coeff. of det. 0.998613

Errors



| | Calibrator | Response | Calc. con. | Conc. | Errors |
|---|------------|----------|------------|---------|--------|
| 1 | TKN-10 | 0.134 | 0.5590 | 0.5000 | |
| 2 | TKN-10 | 0.234 | 1.0473 | 1.0000 | |
| 3 | TKN-10 | 0.540 | 2.5393 | 2.5000 | |
| 4 | TKN-10 | 1.018 | 4.8760 | 5.0000 | |
| 5 | TKN-10 | 1.344 | 6.4683 | 6.6667 | |
| 6 | TKN-10 | 2.103 | 10.1768 | 10.0000 | |