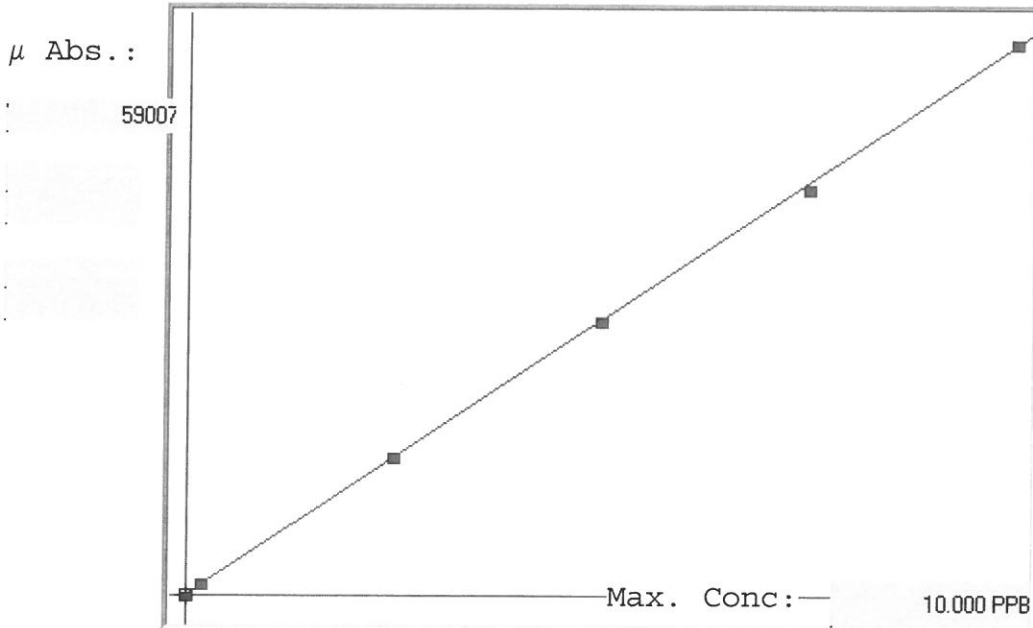


LB103348

7471B

INSTRUMENT ID : CU1

Linear



A= 0.0000e+000

B= 1.7047e-004

C= -4.2701e-003

Rho= 0.9999230

Accept=Accepted

Std ID	Conc.	Calc.	Dev.	Mean	SD or %RSD	Rep 1	Rep 2	Rep 3	Rep 4	Rep 5
0.0	0.000	-0.013	-0.013	-51	0.000	-51				
0.2	0.200	0.209	0.009	1253	0.0 %	1253				
2.5	2.500	2.531	0.031	14873	0.0 %	14873				
5.0	5.000	5.009	0.009	29409	0.0 %	29409				
7.5	7.500	7.409	-0.091	43487	0.0 %	43487				
10.0	10.000	10.055	0.055	59007	0.0 %	59007				

LB103348 INSTRUMENT ID : CV1

Method: 7471B

Operator: Admin

Date of Analysis: 12 Jun 2019 09:57:18

Sample ID	Extended ID	µ Abs.	Conc.	Std Conc	Method	Units	Date	Type	Type
0.0 - 1	50.0	-51	-	0.0000	7471B	PPB	12 Jun 2019 10:01:01	S	Std
0.2 - 1	50.2	1253	-	0.2000	7471B	PPB	12 Jun 2019 10:03:19	S	Std
2.5 - 1	52.5	14873	-	2.5000	7471B	PPB	12 Jun 2019 10:05:37	S	Std
5.0 - 1	55.0	29409	-	5.0000	7471B	PPB	12 Jun 2019 10:07:54	S	Std
7.5 - 1	57.5	43487	-	7.5000	7471B	PPB	12 Jun 2019 10:10:10	S	Std
10.0 - 1	510.0	59007	-	10.0000	7471B	PPB	12 Jun 2019 10:12:26	S	Std
ICV87 - 1	ICV87	22739	3.8720	-7471B	PPB	PPB	12 Jun 2019 10:16:22	U	SMPL
ICB87 - 1	ICB87	-97	-0.0208	-7471B	PPB	PPB	12 Jun 2019 10:18:38	U	SMPL
CCV35 - 1	CCV35	29851	5.0844	-7471B	PPB	PPB	12 Jun 2019 10:20:53	U	SMPL
CCB35 - 1	CCB35	-120	-0.0247	-7471B	PPB	PPB	12 Jun 2019 10:23:08	U	SMPL
CRA - 1	CRA	1257	0.2100	-7471B	PPB	PPB	12 Jun 2019 10:25:24	U	SMPL
HighStd - 1	HighStd	58925	10.0406	-7471B	PPB	PPB	12 Jun 2019 10:27:40	U	SMPL
ChkStd - 1	ChkStd	41047	6.9930	-7471B	PPB	PPB	12 Jun 2019 10:29:56	U	SMPL
PB120535BL - 1	PB120535BL	-146	-0.0292	-7471B	PPB	PPB	12 Jun 2019 10:32:13	U	SMPL
PB120535BS - 1	PB120535BS	20707	3.5256	-7471B	PPB	PPB	12 Jun 2019 10:34:31	U	SMPL
K3159-01 - 1	OR-03-061119-A	2681	0.4528	-7471B	PPB	PPB	12 Jun 2019 10:36:48	U	SMPL
K3159-01DUP - 1	OR-03-061119-ADUP	2618	0.4420	-7471B	PPB	PPB	12 Jun 2019 10:39:05	U	SMPL
K3159-01MS - 1	OR-03-061119-AMS	24751	4.2150	-7471B	PPB	PPB	12 Jun 2019 10:41:22	U	SMPL
K3159-01MSD - 1	OR-03-061119-AMSD	24312	4.1402	-7471B	PPB	PPB	12 Jun 2019 10:43:39	U	SMPL
K3159-03 - 1	OR-03-061119-B	1611	0.2704	-7471B	PPB	PPB	12 Jun 2019 10:45:55	U	SMPL
CCV36 - 1	CCV36	29447	5.0155	-7471B	PPB	PPB	12 Jun 2019 10:48:11	U	SMPL
CCB36 - 1	CCB36	2	-0.0039	-7471B	PPB	PPB	12 Jun 2019 10:50:28	U	SMPL
K3163-05 - 1	SU-04-060719-A	4427	0.7504	-7471B	PPB	PPB	12 Jun 2019 10:52:44	U	SMPL
K3163-07 - 1	SU-04-060719-B	2220	0.3742	-7471B	PPB	PPB	12 Jun 2019 10:54:59	U	SMPL
K3265-02 - 1	B-01-(0-37)COMP	12566	2.1378	-7471B	PPB	PPB	12 Jun 2019 10:57:15	U	SMPL
K3265-04 - 1	B-04-COMP	1376	0.2303	-7471B	PPB	PPB	12 Jun 2019 10:59:31	U	SMPL
K3265-06 - 1	B-03-COMP	1063	0.1769	-7471B	PPB	PPB	12 Jun 2019 11:01:47	U	SMPL
K3265-08 - 1	B-02-COMP	12522	2.1303	-7471B	PPB	PPB	12 Jun 2019 11:04:03	U	SMPL
K3271-02 - 1	BAT-B1	4472	0.7581	-7471B	PPB	PPB	12 Jun 2019 11:06:20	U	SMPL
K3281-01 - 1	CONCRETE-COMP	170	0.0247	-7471B	PPB	PPB	12 Jun 2019 11:08:46	U	SMPL
K3282-01 - 1	25082-2022	1086	0.1809	-7471B	PPB	PPB	12 Jun 2019 11:11:06	U	SMPL
K3283-01 - 1	200030-200034	1711	0.2874	-7471B	PPB	PPB	12 Jun 2019 11:13:22	U	SMPL
CCV37 - 1	CCV37	29675	5.0544	-7471B	PPB	PPB	12 Jun 2019 11:15:37	U	SMPL
CCB37 - 1	CCB37	-109	-0.0229	-7471B	PPB	PPB	12 Jun 2019 11:17:54	U	SMPL
K3285-02 - 1	M-1-OW(0-10)	12423	2.1135	-7471B	PPB	PPB	12 Jun 2019 11:20:10	U	SMPL
K3303-02 - 1	BAT-B03	1137	0.1896	-7471B	PPB	PPB	12 Jun 2019 11:22:26	U	SMPL
K3303-04 - 1	BAT-B02	1088	0.1812	-7471B	PPB	PPB	12 Jun 2019 11:24:42	U	SMPL
K3303-07 - 1	BAT-B13	290	0.0452	-7471B	PPB	PPB	12 Jun 2019 11:26:58	U	SMPL
K3159-01LX5 - 1		465	0.0750	-7471B	PPB	PPB	12 Jun 2019 11:29:14	U	SMPL
K3159-01A - 1		25138	4.2810	-7471B	PPB	PPB	12 Jun 2019 11:31:30	U	SMPL
CCV38 - 1	CCV38	30534	5.2008	-7471B	PPB	PPB	12 Jun 2019 11:33:47	U	SMPL
CCB38 - 1	CCB38	-10	-0.0060	-7471B	PPB	PPB	12 Jun 2019 11:36:04	U	SMPL