

Test results

Aquakem 7.2AQ1

Page: 1

CHEMTECH  
284 Sheffield Street,  
Mountainside, NJ 07092

Reviewed by : CT

Instrument ID : Konelab

7/29/2019 9:29

Test: Total CN

*ug/L*

Sample Id	Result	Dil. 1 +	Response	Errors
ICV1	95.443	0.0	0.091	
ICB1	0.232	0.0	0.001	
CCV1	239.109	0.0	0.227	
CCB1	0.134	0.0	0.001	
PB121686BL	0.112	0.0	0.001	
PB121686BS	95.633	0.0	0.091	
MIDPB121686	237.701	0.0	0.226	
K3969-01	0.365	0.0	0.001	
K3969-01DUP	0.244	0.0	0.001	
K3969-01MS	39.023	0.0	0.038	
K3969-01MSD	39.021	0.0	0.038	
CCV2	257.076	0.0	0.244	
CCB2	0.021	0.0	0.001	

N	13
Mean	77.240
SD	101.4504
CV%	131.35

CHEMTECH  
284 Sheffield Street,  
Mountainside, NJ 07092  
Reviewed by : CS

Instrument ID : Konelab

7/29/2019 8:16  
-----

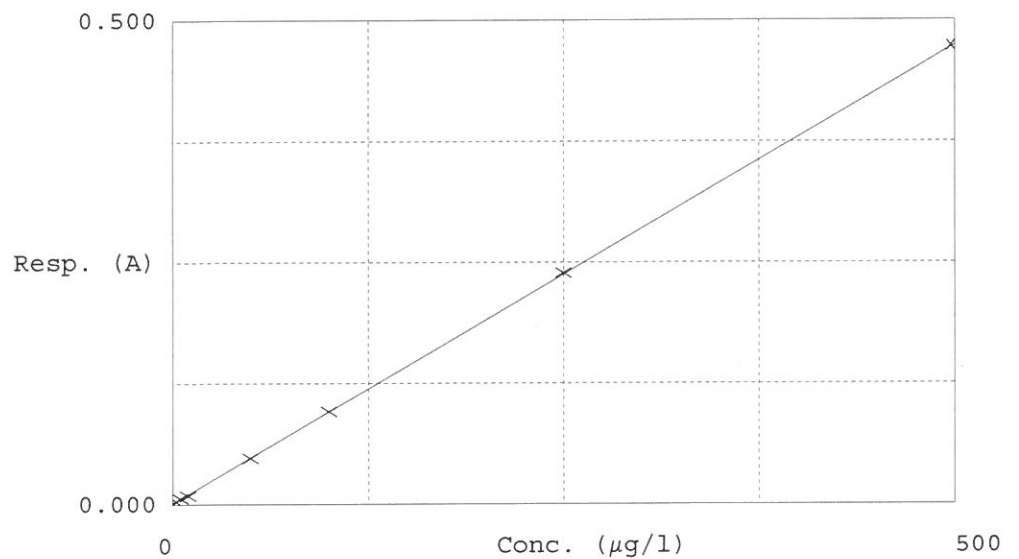
Test Total CN

Accepted 7/29/2019 8:16

Factor 1057  
Bias 0.001

Coeff. of det. 0.999969

Errors



	Calibrator	Response	Calc. con.	Conc.	Errors
1	0.0PPBCN	0.001	-0.0082	0.0000	
2	5.0PPBCN	0.006	5.7692	5.0000	
3	10PPBCN	0.009	8.5347	10.0000	
4	50PPBCN	0.048	49.5144	50.0000	
5	100PPBCN	0.096	100.3808	100.0000	
6	250PPBCN	0.239	251.6301	250.0000	
7	500PPBCN	0.473	499.1790	500.0000	

Aquakem v. 7.2AQ1

CT

Results from time period:

Mon Jul 29 08:15:19 2019

Mon Jul 29 09:27:55 2019

Sample Id	Sam/Ctr/c/	Test short	Test type	Result	Result unit	Result date and time	Stat
0.0PPBCN	A	Total CN	P	-0.0082	µg/l	7/29/2019 8:15:19	
5.0PPBCN	A	Total CN	P	5.7692	µg/l	7/29/2019 8:15:20	
10PPBCN	A	Total CN	P	8.5347	µg/l	7/29/2019 8:15:21	
50PPBCN	A	Total CN	P	49.5144	µg/l	7/29/2019 8:15:22	
100PPBCN	A	Total CN	P	100.3808	µg/l	7/29/2019 8:15:23	
250PPBCN	A	Total CN	P	251.6301	µg/l	7/29/2019 8:15:24	
500PPBCN	A	Total CN	P	499.179	µg/l	7/29/2019 8:15:25	
ICV1	S	Total CN	P	95.4432	µg/l	7/29/2019 9:24:31	
ICB1	S	Total CN	P	0.2316	µg/l	7/29/2019 9:24:32	
CCV1	S	Total CN	P	239.1092	µg/l	7/29/2019 9:24:33	
CCB1	S	Total CN	P	0.1342	µg/l	7/29/2019 9:24:34	
PB121686BL	S	Total CN	P	0.1123	µg/l	7/29/2019 9:24:35	
PB121686BS	S	Total CN	P	95.6326	µg/l	7/29/2019 9:24:36	
MIDPB121686	S	Total CN	P	237.7009	µg/l	7/29/2019 9:24:37	
K3969-01	S	Total CN	P	0.3653	µg/l	7/29/2019 9:24:38	
K3969-01DUP	S	Total CN	P	0.2444	µg/l	7/29/2019 9:24:39	
K3969-01MS	S	Total CN	P	39.0226	µg/l	7/29/2019 9:24:40	
K3969-01MSD	S	Total CN	P	39.0213	µg/l	7/29/2019 9:24:41	
CCV2	S	Total CN	P	257.076	µg/l	7/29/2019 9:27:54	
CCB2	S	Total CN	P	0.0214	µg/l	7/29/2019 9:27:55	