

LB112113

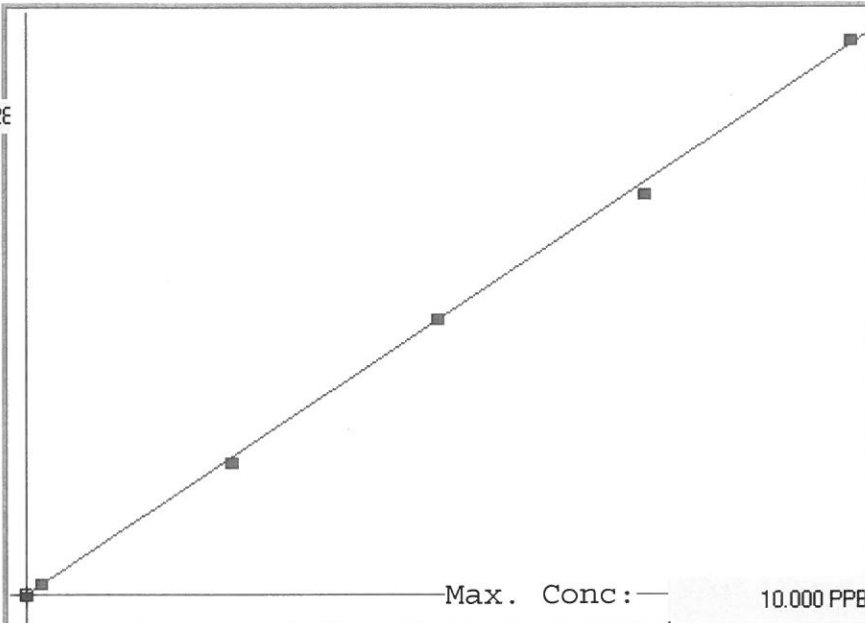
INSTRUMENT ID: CV1

7470A

Linear

μ Abs.:

34028



A= 0.0000e+000

B= 2.9642e-004

C= 1.5701e-002

Rho= 0.9997296

Accept=Accepted

Std ID	Conc.	Calc.	Dev.	Mean	SD or %RSD	Rep 1	Rep 2	Rep 3	Rep 4	Rep 5
0.0	0.000	0.035	0.035	65	0.000	65				
0.2	0.200	0.233	0.033	734	0.0 %	734				
2.5	2.500	2.433	-0.067	8155	0.0 %	8155				
5.0	5.000	5.052	0.052	16990	0.0 %	16990				
7.5	7.500	7.344	-0.156	24724	0.0 %	24724				
10.0	10.000	10.102	0.102	34028	0.0 %	34028				

LB112113 INSTRUMENT ID : CV1

Method: 7470A Operator: Admin Date of Analysis: 24 Nov 2020 08:27:55

Sample ID	Extended ID	μ Abs.	Conc.	Std Conc	Method	Units	Date	Type	Type
0.0 - 1	SO	65	-	0.00007470A		PPB	24 Nov 2020 08:31:16	S	Std
0.2 - 1	SO.2	734	-	0.20007470A		PPB	24 Nov 2020 08:33:33	S	Std
2.5 - 1	SO.5	8155	-	2.50007470A		PPB	24 Nov 2020 08:35:50	S	Std
5.0 - 1	SO	16990	-	5.00007470A		PPB	24 Nov 2020 08:38:07	S	Std
7.5 - 1	SO.5	24724	-	7.50007470A		PPB	24 Nov 2020 08:40:23	S	Std
10.0 - 1	SID	34028	-	10.00007470A		PPB	24 Nov 2020 08:45:14	S	Std
ICV16 - 1	ICV16	12791	3.8072	-7470A		PPB	24 Nov 2020 08:47:54	U	SMPL
ICB16 - 1	ICB16	-62	-0.0027	-7470A		PPB	24 Nov 2020 08:50:09	U	SMPL
CCV81 - 1	CCV81	16544	4.9197	-7470A		PPB	24 Nov 2020 08:52:24	U	SMPL
CCB81 - 1	CCB81	-59	-0.0018	-7470A		PPB	24 Nov 2020 08:54:39	U	SMPL
CRA - 1	CRA	710	0.2262	-7470A		PPB	24 Nov 2020 08:56:54	U	SMPL
HighStd - 1	HighStd	33018	9.8030	-7470A		PPB	24 Nov 2020 08:59:09	U	SMPL
ChkStd - 1	ChkStd	21462	6.3775	-7470A		PPB	24 Nov 2020 09:01:24	U	SMPL
PB133205BL - 1	PBW	-41	0.0035	-7470A		PPB	24 Nov 2020 09:03:41	U	SMPL
PB133205BS - 1	LCSW	11529	3.4332	-7470A		PPB	24 Nov 2020 09:05:58	U	SMPL
L4826-01 - 1	PB-2020-WS-000-04	2	0.0163	-7470A		PPB	24 Nov 2020 09:08:14	U	SMPL
L4845-04 - 1	PH-TP	69	0.0362	-7470A		PPB	24 Nov 2020 09:10:31	U	SMPL
L4848-02 - 1	TR5-(1-4)-COMP	81	0.0397	-7470A		PPB	24 Nov 2020 09:12:48	U	SMPL
L4858-03 - 1	PHC-340EM-012	249	0.0895	-7470A		PPB	24 Nov 2020 09:15:05	U	SMPL
L4858-04 - 1	PHC-340EM-013	17	0.0207	-7470A		PPB	24 Nov 2020 09:17:20	U	SMPL
CCV82 - 1	CCV82	16448	4.8913	-7470A		PPB	24 Nov 2020 09:19:36	U	SMPL
CCB82 - 1	CCB82	-27	0.0077	-7470A		PPB	24 Nov 2020 09:21:51	U	SMPL
L4858-04DUP - 1	PHC-340EM-013DUP	73	0.0373	-7470A		PPB	24 Nov 2020 09:24:06	U	SMPL
L4858-04MS - 1	PHC-340EM-013MS	14117	4.2003	-7470A		PPB	24 Nov 2020 09:26:21	U	SMPL
L4858-04MSD - 1	PHC-340EM-013MSD	13154	3.9148	-7470A		PPB	24 Nov 2020 09:31:24	U	SMPL
PB133206BL - 1	PBW	-67	-0.0042	-7470A		PPB	24 Nov 2020 09:33:39	U	SMPL
PB133206BS - 1	LCSW	12778	3.8034	-7470A		PPB	24 Nov 2020 09:35:56	U	SMPL
L4857-04 - 1	304EM-STOCKPILE	390	0.1313	-7470A		PPB	24 Nov 2020 09:38:12	U	SMPL
L4857-05 - 1	304EM-STOCKPILE-EAST	133	0.0551	-7470A		PPB	24 Nov 2020 09:40:28	U	SMPL
L4857-06 - 1	304EM-STOCKPILE-WEST	102	0.0459	-7470A		PPB	24 Nov 2020 09:42:45	U	SMPL
L4857-06DUP - 1	304EM-STOCKPILE-WESTDUP	91	0.0427	-7470A		PPB	24 Nov 2020 09:45:02	U	SMPL
L4857-06MS - 1	304EM-STOCKPILE-WESTMS	12766	3.7998	-7470A		PPB	24 Nov 2020 09:47:18	U	SMPL
CCV83 - 1	CCV83	17511	5.2064	-7470A		PPB	24 Nov 2020 10:01:46	U	SMPL
CCB83 - 1	CCB83	-10	0.0127	-7470A		PPB	24 Nov 2020 10:04:01	U	SMPL
L4857-06MSD - 1	304EM-STOCKPILE-WESTMSD	13109	3.9015	-7470A		PPB	24 Nov 2020 10:11:48	U	SMPL
PB133207BL - 1	PBW	14	0.0199	-7470A		PPB	24 Nov 2020 10:14:04	U	SMPL
PB133207BS - 1	LCSW	13171	3.9199	-7470A		PPB	24 Nov 2020 10:16:19	U	SMPL
L4830-01 - 1	MW-15	27	0.0237	-7470A		PPB	24 Nov 2020 10:18:35	U	SMPL
L4830-02 - 1	MW-16D	74	0.0376	-7470A		PPB	24 Nov 2020 10:20:51	U	SMPL
L4830-03 - 1	MW-17	75	0.0379	-7470A		PPB	24 Nov 2020 10:23:07	U	SMPL
L4830-04 - 1	MW-4	103	0.0462	-7470A		PPB	24 Nov 2020 10:25:23	U	SMPL
L4830-05 - 1	MW-7	78	0.0388	-7470A		PPB	24 Nov 2020 10:27:40	U	SMPL
L4830-06 - 1	MW-8	85	0.0409	-7470A		PPB	24 Nov 2020 10:29:57	U	SMPL
L4830-07 - 1	MW-9	1405	0.4322	-7470A		PPB	24 Nov 2020 10:32:12	U	SMPL
CCV84 - 1	CCV84	17331	5.1530	-7470A		PPB	24 Nov 2020 10:41:56	U	SMPL
CCB84 - 1	CCB84	12	0.0193	-7470A		PPB	24 Nov 2020 10:44:11	U	SMPL
L4830-08 - 1	MW-2	301	0.1049	-7470A		PPB	24 Nov 2020 10:46:26	U	SMPL
L4830-08DUP - 1	MW-2DUP	191	0.0723	-7470A		PPB	24 Nov 2020 10:48:42	U	SMPL
L4830-09 - 1	L4830-08MS	15819	4.7048	-7470A		PPB	24 Nov 2020 10:50:57	U	SMPL
L4830-10 - 1	L4830-08MSD	16100	4.7881	-7470A		PPB	24 Nov 2020 10:53:13	U	SMPL
L4830-11 - 1	MW-1A	504	0.1651	-7470A		PPB	24 Nov 2020 10:55:29	U	SMPL
L4830-12 - 1	MW-5	125	0.0528	-7470A		PPB	24 Nov 2020 10:57:46	U	SMPL
L4830-13 - 1	MW-10D	174	0.0673	-7470A		PPB	24 Nov 2020 11:00:03	U	SMPL
L4830-14 - 1	MW-3	97	0.0445	-7470A		PPB	24 Nov 2020 11:02:20	U	SMPL
L4830-15 - 1	MW-6	481	0.1583	-7470A		PPB	24 Nov 2020 11:04:37	U	SMPL
L4830-16 - 1	FIELD BLANK	58	0.0329	-7470A		PPB	24 Nov 2020 11:06:53	U	SMPL
CCV85 - 1	CCV85	16887	5.0214	-7470A		PPB	24 Nov 2020 11:09:08	U	SMPL
CCB85 - 1	CCB85	49	0.0302	-7470A		PPB	24 Nov 2020 11:11:24	U	SMPL
L4833-01 - 1	GROUNDWATER	2566	0.7763	-7470A		PPB	24 Nov 2020 11:13:40	U	SMPL
L4835-26 - 1	EB02-20201119	-111	-0.0172	-7470A		PPB	24 Nov 2020 11:15:55	U	SMPL
L4840-05 - 1	16858	799	0.2525	-7470A		PPB	24 Nov 2020 11:18:13	U	SMPL
L4840-06 - 1	30738	3861	1.1602	-7470A		PPB	24 Nov 2020 11:20:29	U	SMPL
L4841-02 - 1	16855	26953	8.0052	-7470A		PPB	24 Nov 2020 11:22:45	U	SMPL
L4841-03 - 1	16881	1301	0.4013	-7470A		PPB	24 Nov 2020 11:25:02	U	SMPL
PB133208BL - 1	PBW	-219	-0.0492	-7470A		PPB	24 Nov 2020 11:27:20	U	SMPL
PB133208BS - 1	LCSW	13985	4.1612	-7470A		PPB	24 Nov 2020 11:29:38	U	SMPL
L4830-17 - 1	MW-15	29	0.0243	-7470A		PPB	24 Nov 2020 11:31:55	U	SMPL
L4830-18 - 1	MW-16D	67	0.0356	-7470A		PPB	24 Nov 2020 11:34:12	U	SMPL
CCV86 - 1	CCV86	18271	5.4316	-7470A		PPB	24 Nov 2020 11:36:28	U	SMPL
CCB86 - 1	CCB86	48	0.0299	-7470A		PPB	24 Nov 2020 11:38:44	U	SMPL
L4830-19 - 1	MW-17	71	0.0367	-7470A		PPB	24 Nov 2020 11:41:00	U	SMPL
L4830-20 - 1	MW-4	108	0.0477	-7470A		PPB	24 Nov 2020 11:43:16	U	SMPL
L4830-21 - 1	MW-7	111	0.0486	-7470A		PPB	24 Nov 2020 11:45:32	U	SMPL
L4830-22 - 1	MW-8	79	0.0391	-7470A		PPB	24 Nov 2020 11:47:48	U	SMPL
L4830-23 - 1	MW-9	75	0.0379	-7470A		PPB	24 Nov 2020 11:50:04	U	SMPL
L4830-24 - 1	MW-2	85	0.0409	-7470A		PPB	24 Nov 2020 11:52:20	U	SMPL
L4830-24DUP - 1	MW-2DUP	101	0.0456	-7470A		PPB	24 Nov 2020 11:54:36	U	SMPL
L4830-25 - 1	L4830-24MS	15581	4.6343	-7470A		PPB	24 Nov 2020 11:56:53	U	SMPL
L4830-26 - 1	L4830-24MSD	14468	4.3043	-7470A		PPB	24 Nov 2020 11:59:10	U	SMPL
L4830-27 - 1	MW-1A	32	0.0252	-7470A		PPB	24 Nov 2020 12:01:27	U	SMPL
CCV87 - 1	CCV87	16065	4.7777	-7470A		PPB	24 Nov 2020 12:08:10	U	SMPL

LB112113 INSTRUMENT ID : CV1

Sample ID	Extended ID	μ Abs.	Conc.	Stnd Conc	Method	Units	Date	Type	Type
CCB87 - 1	CCB87	22	0.0222		-7470A	PPB	24 Nov 2020 12:10:26	U	SMPL
L4830-28 - 1	MW-5	72	0.0370		-7470A	PPB	24 Nov 2020 12:12:42	U	SMPL
L4830-29 - 1	MW-10D	55	0.0320		-7470A	PPB	24 Nov 2020 12:14:59	U	SMPL
L4830-30 - 1	MW-3	95	0.0439		-7470A	PPB	24 Nov 2020 12:17:15	U	SMPL
L4830-31 - 1	MW-6	132	0.0548		-7470A	PPB	24 Nov 2020 12:19:31	U	SMPL
L4830-32 - 1	FIELDBLANK	42	0.0282		-7470A	PPB	24 Nov 2020 12:21:47	U	SMPL
L4842-03 - 1	16846-41629	919	0.2881		-7470A	PPB	24 Nov 2020 12:24:03	U	SMPL
L4842-04 - 1	40642	1049	0.3266		-7470A	PPB	24 Nov 2020 12:26:19	U	SMPL
L4842-06 - 1	11920	274	0.0969		-7470A	PPB	24 Nov 2020 12:28:36	U	SMPL
PB133205TB - 1	PB133121TB	61	0.0338		-7470A	PPB	24 Nov 2020 12:30:53	U	SMPL
PB133206TB - 1	PB133163TB	37	0.0267		-7470A	PPB	24 Nov 2020 12:33:09	U	SMPL
CCV88 - 1	CCV88	17054	5.0709		-7470A	PPB	24 Nov 2020 12:35:26	U	SMPL
CCB88 - 1	CCB88	10	0.0187		-7470A	PPB	24 Nov 2020 12:37:42	U	SMPL
L4858-04LX5 - 1		75	0.0379		-7470A	PPB	24 Nov 2020 12:39:58	U	SMPL
L4858-04A - 1		13957	4.1529		-7470A	PPB	24 Nov 2020 12:42:14	U	SMPL
L4857-06LX5 - 1		19	0.0213		-7470A	PPB	24 Nov 2020 12:44:30	U	SMPL
L4857-06A - 1		14085	4.1908		-7470A	PPB	24 Nov 2020 12:46:46	U	SMPL
L4830-08LX5 - 1		43	0.0284		-7470A	PPB	24 Nov 2020 12:49:02	U	SMPL
L4830-08A - 1		15597	4.6390		-7470A	PPB	24 Nov 2020 12:51:19	U	SMPL
L4830-24LX5 - 1		27	0.0237		-7470A	PPB	24 Nov 2020 12:53:35	U	SMPL
L4830-24A - 1		14529	4.3224		-7470A	PPB	24 Nov 2020 12:55:52	U	SMPL
CCV89 - 1	CCV89	17536	5.2138		-7470A	PPB	24 Nov 2020 12:58:09	U	SMPL
CCB89 - 1	CCB89	8	0.0181		-7470A	PPB	24 Nov 2020 13:00:25	U	SMPL