

L13120217

Test results

Aquakem 7.2AQ1

Page: 1

CHEMTECH CONSULTING GROUP INC
284 Sheffield Street, Mountainside, NJ 07092

Reviewed by : 12 Instrument ID : Konelab

5/17/2022 16:02

Test: Total CN

| Sample Id | Result | Dil. 1 + | Response | Errors |
|--------------|---------|----------|----------|---------------|
| ICV1 | 96.089 | 0.0 | 0.077 | |
| ICB1 | 1.287 | 0.0 | 0.002 | |
| CCV1 | 248.968 | 0.0 | 0.198 | |
| CCB1 | 1.067 | 0.0 | 0.002 | |
| PB144878BL | 0.971 | 0.0 | 0.001 | |
| PB144878BS | 97.901 | 0.0 | 0.078 | |
| LOWPB144878 | 10.237 | 0.0 | 0.009 | 102% (P6-110) |
| HIGHPB144878 | 494.485 | 0.0 | 0.393 | 99% (P0-110) |
| N2863-01 | 2.390 | 0.0 | 0.003 | 12 |
| N2863-01DUP | 2.486 | 0.0 | 0.003 | 5/17/22 |
| N2863-01MS | 32.742 | 0.0 | 0.027 | |
| N2863-01MSD | 32.666 | 0.0 | 0.027 | |
| N2863-02 | 1.791 | 0.0 | 0.002 | |
| N2863-03 | 1.472 | 0.0 | 0.002 | |
| CCV2 | 245.493 | 0.0 | 0.195 | |
| CCB2 | 0.837 | 0.0 | 0.001 | |
| N2863-04 | 0.614 | 0.0 | 0.001 | |
| N2863-05 | 0.677 | 0.0 | 0.001 | |
| N2863-06 | 1.601 | 0.0 | 0.002 | |
| N2863-11 | 0.556 | 0.0 | 0.001 | |
| N2863-16 | 1.792 | 0.0 | 0.002 | |
| N2863-21 | 0.705 | 0.0 | 0.001 | |
| PB144879BL | 0.536 | 0.0 | 0.001 | |
| PB144879BS | 95.954 | 0.0 | 0.077 | |
| N2864-04 | 0.860 | 0.0 | 0.001 | |
| N2864-04DUP | 1.274 | 0.0 | 0.002 | |
| CCV3 | 247.033 | 0.0 | 0.196 | |
| CCB3 | 0.805 | 0.0 | 0.001 | |
| N2864-04MS | 38.384 | 0.0 | 0.031 | |
| N2864-04MSD | 38.792 | 0.0 | 0.031 | |
| N2864-05 | 0.932 | 0.0 | 0.001 | |
| N2864-06 | 0.870 | 0.0 | 0.001 | |
| N2864-07 | 0.633 | 0.0 | 0.001 | |
| N2864-09 | 1.038 | 0.0 | 0.002 | |
| N2864-12 | 3.061 | 0.0 | 0.003 | |
| PB144893BL | 0.642 | 0.0 | 0.001 | |
| PB144893BS | 98.726 | 0.0 | 0.079 | |
| CCV4 | 250.812 | 0.0 | 0.199 | |
| CCB4 | 0.846 | 0.0 | 0.001 | |
| LOWPB144893 | 10.258 | 0.0 | 0.009 | 102% (P0-110) |
| HIGHPB144893 | 498.213 | 0.0 | 0.396 | 100% (P0-110) |
| N2865-01 | 2.789 | 0.0 | 0.003 | |
| N2865-01DUP | 2.218 | 0.0 | 0.002 | |
| N2865-02MS | 32.613 | 0.0 | 0.027 | |
| N2865-03MSD | 32.384 | 0.0 | 0.026 | |
| N2865-04 | 2.867 | 0.0 | 0.003 | |
| N2865-05 | 1.371 | 0.0 | 0.002 | |
| CCV5 | 253.235 | 0.0 | 0.201 | |
| CCB5 | 1.102 | 0.0 | 0.002 | |
| N2865-06 | 1.217 | 0.0 | 0.002 | |
| N2865-07 | 1.579 | 0.0 | 0.002 | |
| N2865-08 | 0.702 | 0.0 | 0.001 | |
| N2865-09 | 1.360 | 0.0 | 0.002 | |
| N2865-10 | 1.160 | 0.0 | 0.002 | |
| N2865-11 | 0.385 | 0.0 | 0.001 | |

125/17/22

CHEMTECH CONSULTING GROUP INC
284 Sheffield Street, Mountainside, NJ 07092

Reviewed by : 12 Instrument ID : Konelab

5/17/2022 16:02

Test: Total CN

| Sample Id | Result | Dil. 1 + | Response | Errors |
|-------------|---------|----------|----------|--------|
| N2865-12 | 0.610 | 0.0 | 0.001 | |
| N2865-13 | 0.696 | 0.0 | 0.001 | |
| N2865-14 | 1.112 | 0.0 | 0.002 | |
| PB144894BL | 0.861 | 0.0 | 0.001 | |
| CCV6 | 248.036 | 0.0 | 0.197 | |
| CCB6 | 0.557 | 0.0 | 0.001 | |
| PB144894BS | 96.487 | 0.0 | 0.077 | |
| N2865-24 | 1.562 | 0.0 | 0.002 | |
| N2865-24DUP | 1.451 | 0.0 | 0.002 | |
| N2865-24MS | 38.641 | 0.0 | 0.031 | |
| N2865-24MSD | 39.055 | 0.0 | 0.032 | |
| N2870-11 | 0.586 | 0.0 | 0.001 | |
| N2864-08 | 1.767 | 0.0 | 0.002 | |
| CCV7 | 257.586 | 0.0 | 0.205 | |
| CCB7 | 0.627 | 0.0 | 0.001 | |

N 70
Mean 51.302
SD 107.9664
CV% 210.45

Aquakem v. 7.2AQ1

Results from time period:

Tue May 17 11:30:42 2022

Tue May 17 15:56:58 2022

| Sample Id | Sam/Ctr/c/ | Test short | Test type | Result | Result unit | Result date and time |
|--------------|------------|------------|-----------|----------|-------------|----------------------|
| 0.OPPBCN | A | Total CN | P | 0.2417 | µg/l | 5/17/2022 11:30:42 |
| 5.OPPBCN | A | Total CN | P | 4.8368 | µg/l | 5/17/2022 11:30:43 |
| 10PPBCN | A | Total CN | P | 9.7927 | µg/l | 5/17/2022 11:30:44 |
| 50PPBCN | A | Total CN | P | 49.7349 | µg/l | 5/17/2022 11:30:45 |
| 100PPBCN | A | Total CN | P | 99.3876 | µg/l | 5/17/2022 11:30:46 |
| 250PPBCN | A | Total CN | P | 251.7028 | µg/l | 5/17/2022 11:30:47 |
| 500PPBCN | A | Total CN | P | 499.3033 | µg/l | 5/17/2022 11:30:48 |
| ICV1 | S | Total CN | P | 96.0887 | µg/l | 5/17/2022 13:53:56 |
| ICB1 | S | Total CN | P | 1.287 | µg/l | 5/17/2022 13:53:57 |
| CCV1 | S | Total CN | P | 248.9679 | µg/l | 5/17/2022 13:53:59 |
| CCB1 | S | Total CN | P | 1.0673 | µg/l | 5/17/2022 13:54:01 |
| PB144878BL | S | Total CN | P | 0.9707 | µg/l | 5/17/2022 13:54:04 |
| PB144878BS | S | Total CN | P | 97.9013 | µg/l | 5/17/2022 13:54:05 |
| LOWPB144878 | S | Total CN | P | 10.2367 | µg/l | 5/17/2022 14:01:31 |
| HIGHPB144878 | S | Total CN | P | 494.4847 | µg/l | 5/17/2022 14:01:34 |
| N2863-01 | S | Total CN | P | 2.3896 | µg/l | 5/17/2022 14:01:37 |
| N2863-01DUP | S | Total CN | P | 2.4856 | µg/l | 5/17/2022 14:01:38 |
| N2863-01MS | S | Total CN | P | 32.7415 | µg/l | 5/17/2022 14:01:39 |
| N2863-01MSD | S | Total CN | P | 32.6663 | µg/l | 5/17/2022 14:01:40 |
| N2863-02 | S | Total CN | P | 1.7912 | µg/l | 5/17/2022 14:09:05 |
| N2863-03 | S | Total CN | P | 1.4722 | µg/l | 5/17/2022 14:09:06 |
| CCV2 | S | Total CN | P | 245.4926 | µg/l | 5/17/2022 14:09:07 |
| CCB2 | S | Total CN | P | 0.8369 | µg/l | 5/17/2022 14:09:08 |
| N2863-04 | S | Total CN | P | 0.6143 | µg/l | 5/17/2022 14:09:09 |
| N2863-05 | S | Total CN | P | 0.6772 | µg/l | 5/17/2022 14:09:10 |
| N2863-06 | S | Total CN | P | 1.6007 | µg/l | 5/17/2022 14:09:11 |
| N2863-11 | S | Total CN | P | 0.5559 | µg/l | 5/17/2022 14:09:12 |
| N2863-16 | S | Total CN | P | 1.7916 | µg/l | 5/17/2022 14:09:13 |
| N2863-21 | S | Total CN | P | 0.705 | µg/l | 5/17/2022 14:09:14 |
| PB144879BL | S | Total CN | P | 0.5355 | µg/l | 5/17/2022 14:09:15 |
| PB144879BS | S | Total CN | P | 95.9539 | µg/l | 5/17/2022 14:16:40 |
| N2864-04 | S | Total CN | P | 0.86 | µg/l | 5/17/2022 14:16:41 |
| N2864-04DUP | S | Total CN | P | 1.2743 | µg/l | 5/17/2022 14:16:42 |
| CCV3 | S | Total CN | P | 247.0329 | µg/l | 5/17/2022 14:16:43 |
| CCB3 | S | Total CN | P | 0.8046 | µg/l | 5/17/2022 14:16:44 |
| N2864-04MS | S | Total CN | P | 38.3836 | µg/l | 5/17/2022 14:16:45 |
| N2864-04MSD | S | Total CN | P | 38.7916 | µg/l | 5/17/2022 14:16:46 |
| N2864-05 | S | Total CN | P | 0.9324 | µg/l | 5/17/2022 14:16:49 |
| N2864-06 | S | Total CN | P | 0.8702 | µg/l | 5/17/2022 14:16:50 |
| N2864-07 | S | Total CN | P | 0.6327 | µg/l | 5/17/2022 14:24:15 |
| N2864-09 | S | Total CN | P | 1.038 | µg/l | 5/17/2022 14:24:17 |
| N2864-12 | S | Total CN | P | 3.0614 | µg/l | 5/17/2022 14:24:18 |

| | | | | | |
|--------------|---|----------|---|---------------|--------------------|
| PB144893BL | S | Total CN | P | 0.6422 µg/l | 5/17/2022 14:24:19 |
| PB144893BS | S | Total CN | P | 98.7262 µg/l | 5/17/2022 14:24:20 |
| CCV4 | S | Total CN | P | 250.8121 µg/l | 5/17/2022 14:24:21 |
| CCB4 | S | Total CN | P | 0.8457 µg/l | 5/17/2022 14:24:22 |
| LOWPB144893 | S | Total CN | P | 10.2578 µg/l | 5/17/2022 14:24:23 |
| HIGHPB144893 | S | Total CN | P | 498.2133 µg/l | 5/17/2022 14:24:24 |
| N2865-01 | S | Total CN | P | 2.7888 µg/l | 5/17/2022 14:24:25 |
| N2865-01DUP | S | Total CN | P | 2.2177 µg/l | 5/17/2022 14:31:50 |
| N2865-02MS | S | Total CN | P | 32.6135 µg/l | 5/17/2022 14:31:53 |
| N2865-03MSD | S | Total CN | P | 32.3837 µg/l | 5/17/2022 14:31:54 |
| N2865-04 | S | Total CN | P | 2.8674 µg/l | 5/17/2022 14:31:57 |
| N2865-05 | S | Total CN | P | 1.3708 µg/l | 5/17/2022 14:31:58 |
| CCV5 | S | Total CN | P | 253.2353 µg/l | 5/17/2022 14:31:59 |
| CCB5 | S | Total CN | P | 1.1021 µg/l | 5/17/2022 14:32:00 |
| N2865-06 | S | Total CN | P | 1.2172 µg/l | 5/17/2022 14:39:22 |
| N2865-07 | S | Total CN | P | 1.5787 µg/l | 5/17/2022 14:39:23 |
| N2865-08 | S | Total CN | P | 0.7022 µg/l | 5/17/2022 14:39:24 |
| N2865-09 | S | Total CN | P | 1.3602 µg/l | 5/17/2022 14:39:25 |
| N2865-10 | S | Total CN | P | 1.1602 µg/l | 5/17/2022 14:39:26 |
| N2865-11 | S | Total CN | P | 0.3854 µg/l | 5/17/2022 14:39:27 |
| N2865-12 | S | Total CN | P | 0.6099 µg/l | 5/17/2022 14:39:28 |
| N2865-13 | S | Total CN | P | 0.696 µg/l | 5/17/2022 14:39:29 |
| N2865-14 | S | Total CN | P | 1.1125 µg/l | 5/17/2022 14:39:30 |
| PB144894BL | S | Total CN | P | 0.8613 µg/l | 5/17/2022 14:39:31 |
| CCV6 | S | Total CN | P | 248.0364 µg/l | 5/17/2022 14:39:32 |
| CCB6 | S | Total CN | P | 0.5568 µg/l | 5/17/2022 14:46:57 |
| PB144894BS | S | Total CN | P | 96.4874 µg/l | 5/17/2022 14:46:58 |
| N2865-24 | S | Total CN | P | 1.5624 µg/l | 5/17/2022 15:25:06 |
| N2865-24DUP | S | Total CN | P | 1.4514 µg/l | 5/17/2022 15:25:07 |
| N2865-24MS | S | Total CN | P | 38.6407 µg/l | 5/17/2022 15:25:08 |
| N2865-24MSD | S | Total CN | P | 39.0554 µg/l | 5/17/2022 15:25:09 |
| N2870-11 | S | Total CN | P | 0.5855 µg/l | 5/17/2022 15:25:10 |
| N2864-08 | S | Total CN | P | 1.7673 µg/l | 5/17/2022 15:30:35 |
| CCV7 | S | Total CN | P | 257.5857 µg/l | 5/17/2022 15:56:57 |
| CCB7 | S | Total CN | P | 0.6273 µg/l | 5/17/2022 15:56:58 |

=====
Calibration results

Aquakem 7.2AQ1

Page: 1

CHEMTECH CONSULTING GROUP INC
284 Sheffield Street, Mountainside, NJ 07092

Reviewed by : 12

Instrument ID : Konelab

5/17/2022 11:32

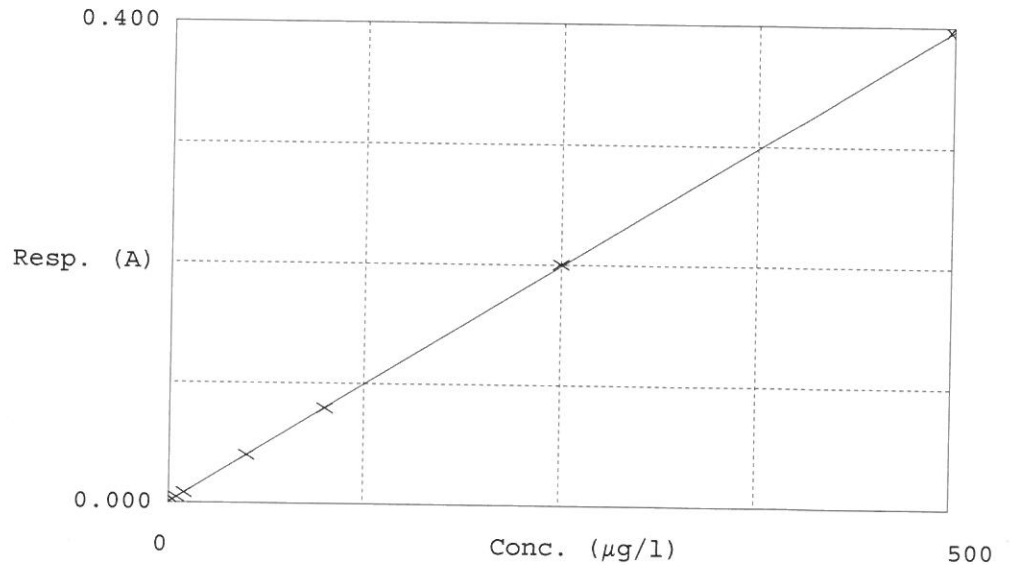
Test Total CN

Accepted 5/17/2022 11:32

Factor 1262
Bias 0.001

Coeff. of det. 0.999981

Errors



| | Calibrator | Response | Calc. con. | Conc. | ^R Errors |
|---|------------|----------|------------|----------|------------------------|
| 1 | 0.0PPBCN | 0.001 | 0.2417 | 0.0000 | — |
| 2 | 5.0PPBCN | 0.005 | 4.8368 | 5.0000 | -3.3 |
| 3 | 10PPBCN | 0.008 | 9.7927 | 10.0000 | -2.1 |
| 4 | 50PPBCN | 0.040 | 49.7349 | 50.0000 | -0.5 |
| 5 | 100PPBCN | 0.079 | 99.3876 | 100.0000 | -0.6 |
| 6 | 250PPBCN | 0.200 | 251.7028 | 250.0000 | 0.7 |
| 7 | 500PPBCN | 0.396 | 499.3033 | 500.0000 | -0.1 |

12
5/17/22