

LB121354

Test results

Aquakem 7.2AQ1

Page: 1

CHEMTECH CONSULTING GROUP INC
284 Sheffield Street, Mountainside, NJ 07092

Reviewed by : 12 Instrument ID : Konelab

8/4/2022 12:15

Test: Phenolics-

Sample Id	Result	Dil. 1 +	Response	Errors
ICV1	0.989	0.0	0.077	
ICB1	-0.011	0.0	0.007	
CCV1	0.992	0.0	0.078	
CCB1	-0.008	0.0	0.008	
PB146750BL	-0.012	0.0	0.007	
PB146750BS	0.993	0.0	0.078	
N3969-01	0.007	0.0	0.009	
N3969-01DUP	0.008	0.0	0.009	
N3969-01MS	1.302	0.0	0.099	
N3969-01MSD	1.298	0.0	0.099	
N3980-10	0.027	0.0	0.010	
N3980-11	0.061	0.0	0.013	
N4024-01	-0.016	0.0	0.007	
CCV2	0.991	0.0	0.077	
CCB2	-0.012	0.0	0.007	

N 15
Mean 0.441
SD 0.5609
CV% 127.29

CHEMTECH CONSULTING GROUP INC
 284 Sheffield Street, Mountainside, NJ 07092

8/4/2022 9:23

Reviewed by : R

Instrument ID : Konelab

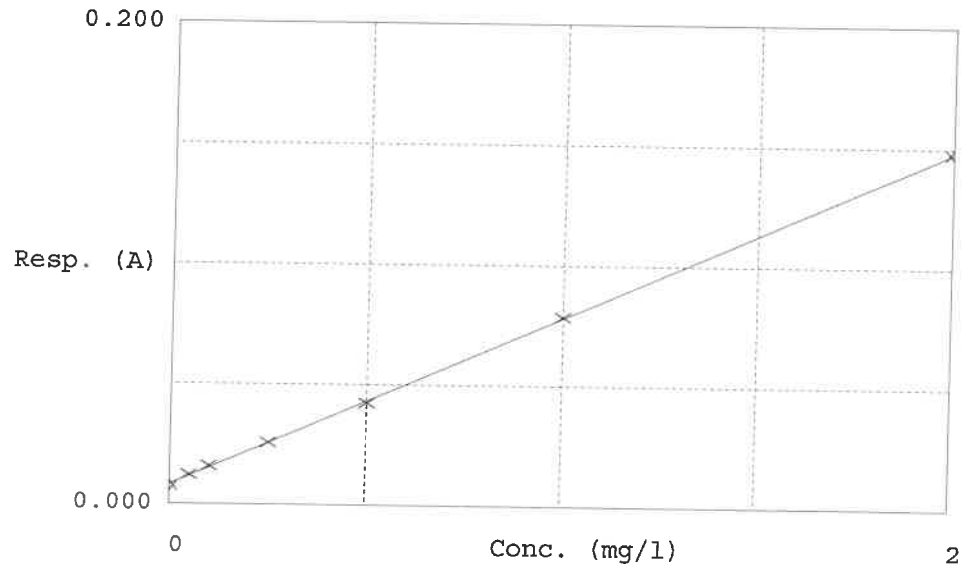
Test Phenolics-

Accepted 8/4/2022 9:23

Factor 14.33
 Bias 0.008

Coeff. of det. 0.999871

Errors



Calibrator	Response	Calc. con.	Conc.	Errors	
1	0.00PPM	0.008	-0.0106	0.0000	-
2	Phenol-2	0.012	0.0563	0.0500	12.9
3	Phenol-2	0.016	0.1089	0.1000	2.9
4	Phenol-2	0.026	0.2506	0.2500	0.2
5	Phenol-2	0.042	0.4891	0.5000	-2.2
6	Phenol-2	0.079	1.0074	1.0000	0.7
7	Phenol-2	0.148	1.9984	2.0000	-0.1

12
8/4/22

Aquakem v. 7.2AQ1

Results from time period:

Thu Aug 04 09:21:35 2022

Thu Aug 04 12:09:03 2022

Sample Id	Sam/Ctr/c/	Test short	Test type	Result	Result unit	Result date and time	Stat
0.00PPM	A	Phenolics-	P	-0.0106	mg/l	8/4/2022 9:21:35	
0.05PPM	A	Phenolics-	P	0.0563	mg/l	8/4/2022 9:21:36	
0.1PPM	A	Phenolics-	P	0.1089	mg/l	8/4/2022 9:21:37	
0.25PPM	A	Phenolics-	P	0.2506	mg/l	8/4/2022 9:21:38	
0.50PPM	A	Phenolics-	P	0.4891	mg/l	8/4/2022 9:21:39	
1.0PPM	A	Phenolics-	P	1.0074	mg/l	8/4/2022 9:21:40	
2.0PPM	A	Phenolics-	P	1.9984	mg/l	8/4/2022 9:21:41	
ICV1	S	Phenolics-	P	0.989	mg/l	8/4/2022 12:04:35	
ICB1	S	Phenolics-	P	-0.0113	mg/l	8/4/2022 12:04:36	
CCV1	S	Phenolics-	P	0.9923	mg/l	8/4/2022 12:04:37	
CCB1	S	Phenolics-	P	-0.0082	mg/l	8/4/2022 12:04:38	
PB146750BL	S	Phenolics-	P	-0.0118	mg/l	8/4/2022 12:04:39	
PB146750BS	S	Phenolics-	P	0.9932	mg/l	8/4/2022 12:04:40	
N3969-01	S	Phenolics-	P	0.0068	mg/l	8/4/2022 12:04:41	
N3969-01DUP	S	Phenolics-	P	0.0081	mg/l	8/4/2022 12:04:42	
N3969-01MS	S	Phenolics-	P	1.302	mg/l	8/4/2022 12:04:43	
N3969-01MSD	S	Phenolics-	P	1.2978	mg/l	8/4/2022 12:04:44	
N3980-10	S	Phenolics-	P	0.0271	mg/l	8/4/2022 12:04:45	
N3980-11	S	Phenolics-	P	0.0614	mg/l	8/4/2022 12:04:46	
N4024-01	S	Phenolics-	P	-0.0158	mg/l	8/4/2022 12:09:01	
CCV2	S	Phenolics-	P	0.9912	mg/l	8/4/2022 12:09:02	
CCB2	S	Phenolics-	P	-0.0123	mg/l	8/4/2022 12:09:03	