

LB1214T3

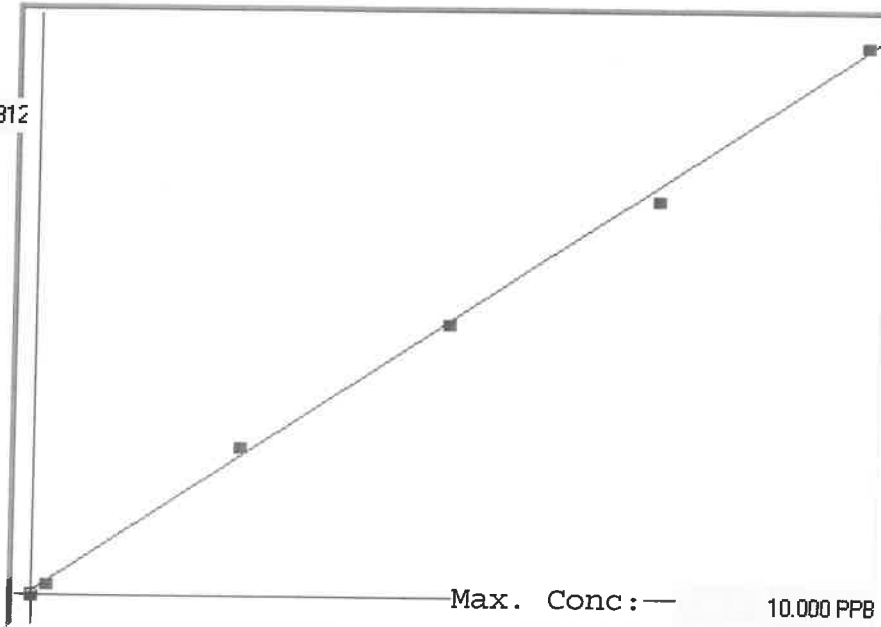
7470A

INSTRUMENT ID: CV4

Linear

μ Abs.:

41812



A= 0.0000e+000

B= 2.4335e-004

C= -6.4030e-002

Rho= 0.9993902

Accept=Accepted

Std ID	Conc.	Calc.	Dev.	Mean	SD or %RSD	Rep 1	Rep 2	Rep 3	Rep 4	Rep 5	%D
0.0	0.000	-0.038	-0.038	106	0.000	106					
0.2	0.200	0.163	-0.037	931	0.0 %	931					
2.5	2.500	2.692	0.192	11325	0.0 %	11325					
5.0	5.000	4.991	-0.009	20773	0.0 %	20773					
7.5	7.500	7.282	-0.218	30187	0.0 %	30187					
10.0	10.000	10.111	0.111	41812	0.0 %	41812					

Handwritten notes in the %D column:
 19
 000
 3000

LB121453 INSTRUMENT ID : CV1

Method: 7470A

Operator: Admin

Date of Analysis: 11 Aug 2022 07:24:43

Sample ID	Extended ID	µ Abs.	Conc.	Std Conc	Method	Units	Date	Type	Type
0.0 - 1	50	106	-	0.0000	7470A	PPB	11 Aug 2022 07:27:21	S	Std
0.2 - 1	50.2	931	-	0.2000	7470A	PPB	11 Aug 2022 07:29:39	S	Std
2.5 - 1	52.5	11325	-	2.5000	7470A	PPB	11 Aug 2022 07:31:55	S	Std
5.0 - 1	55	20773	-	5.0000	7470A	PPB	11 Aug 2022 07:34:12	S	Std
7.5 - 1	57.5	30187	-	7.5000	7470A	PPB	11 Aug 2022 07:36:29	S	Std
10.0 - 1	50	41812	-	10.0000	7470A	PPB	11 Aug 2022 07:41:25	S	Std
ICV79 - 1	ICV79	15819	3.7855	-	7470A	PPB	11 Aug 2022 07:44:12	U	SMPL
ICB79 - 1	ICB79	1	-0.0638	-	7470A	PPB	11 Aug 2022 07:46:26	U	SMPL
CCV05 - 1	CCV05	20255	4.8650	-	7470A	PPB	11 Aug 2022 07:48:42	U	SMPL
CCB05 - 1	CCB05	-13	-0.0672	-	7470A	PPB	11 Aug 2022 07:50:57	U	SMPL
CRA - 1	CRA	926	0.1613	-	7470A	PPB	11 Aug 2022 07:53:12	U	SMPL
HighStd - 1	HighStd	42220	10.2101	-	7470A	PPB	11 Aug 2022 07:55:27	U	SMPL
ChkStd - 1	ChkStd	28105	6.7753	-	7470A	PPB	11 Aug 2022 07:57:42	U	SMPL
PB146909BL - 1	PBW	-39	-0.0735	-	7470A	PPB	11 Aug 2022 08:00:00	U	SMPL
PB146909BS - 1	LCSW	15749	3.7685	-	7470A	PPB	11 Aug 2022 08:04:47	U	SMPL
N4064-01 - 1	SB-01	18	-0.0597	-	7470A	PPB	11 Aug 2022 08:07:03	U	SMPL
N4064-02 - 1	SB-02	77	-0.0453	-	7470A	PPB	11 Aug 2022 08:09:19	U	SMPL
N4064-03 - 1	SB-18	51	-0.0516	-	7470A	PPB	11 Aug 2022 08:11:36	U	SMPL
N4064-04 - 1	SB-16	53	-0.0511	-	7470A	PPB	11 Aug 2022 08:13:53	U	SMPL
N4064-05 - 1	SB-13	62	-0.0489	-	7470A	PPB	11 Aug 2022 08:27:39	U	SMPL
CCV06 - 1	CCV06	21149	5.0825	-	7470A	PPB	11 Aug 2022 08:29:54	U	SMPL
CCB06 - 1	CCB06	6	-0.0626	-	7470A	PPB	11 Aug 2022 08:32:09	U	SMPL
N4064-06 - 1	SB-14	50	-0.0519	-	7470A	PPB	11 Aug 2022 08:34:24	U	SMPL
N4064-07 - 1	SB-15	41	-0.0541	-	7470A	PPB	11 Aug 2022 08:36:40	U	SMPL
N4064-08 - 1	SB-17	52	-0.0514	-	7470A	PPB	11 Aug 2022 08:38:55	U	SMPL
N4093-02 - 1	DRUM-AR-HYD	53	-0.0511	-	7470A	PPB	11 Aug 2022 08:41:11	U	SMPL
N4093-04 - 1	BLDG-4-BASEMENT-DRUM	257	-0.0015	-	7470A	PPB	11 Aug 2022 08:43:27	U	SMPL
N4093-06 - 1	OIL-TANK	646	0.0932	-	7470A	PPB	11 Aug 2022 08:45:43	U	SMPL
N4118-01 - 1	72-11991	20	-0.0592	-	7470A	PPB	11 Aug 2022 08:48:00	U	SMPL
N4118-02 - 1	VNJ-227	46	-0.0528	-	7470A	PPB	11 Aug 2022 08:50:17	U	SMPL
N4118-03 - 1	VNJ-208	66	-0.0480	-	7470A	PPB	11 Aug 2022 08:52:34	U	SMPL
N4118-04 - 1	72-11335	76	-0.0455	-	7470A	PPB	11 Aug 2022 08:54:49	U	SMPL
CCV07 - 1	CCV07	21028	5.0531	-	7470A	PPB	11 Aug 2022 08:57:05	U	SMPL
CCB07 - 1	CCB07	-6	-0.0655	-	7470A	PPB	11 Aug 2022 08:59:20	U	SMPL
N4118-05 - 1	ETGI-363	54	-0.0509	-	7470A	PPB	11 Aug 2022 09:01:37	U	SMPL
N4119-02 - 1	TP1-2-4FT	106	-0.0382	-	7470A	PPB	11 Aug 2022 09:03:52	U	SMPL
N4119-05 - 1	TP2-2FT	40	-0.0543	-	7470A	PPB	11 Aug 2022 09:06:08	U	SMPL
N4119-05DUP - 1	TP2-2FTDUP	31	-0.0565	-	7470A	PPB	11 Aug 2022 09:08:23	U	SMPL
N4119-05MS - 1	TP2-2FTMS	16384	3.9230	-	7470A	PPB	11 Aug 2022 09:10:39	U	SMPL
N4119-05MSD - 1	TP2-2FTMSD	16484	3.9473	-	7470A	PPB	11 Aug 2022 09:12:56	U	SMPL
PB146859TB - 1	PB146859TB	-13	-0.0672	-	7470A	PPB	11 Aug 2022 09:15:13	U	SMPL
N4119-05LX5 - 1		7	-0.0623	-	7470A	PPB	11 Aug 2022 09:17:30	U	SMPL
N4119-05A - 1		17377	4.1646	-	7470A	PPB	11 Aug 2022 09:19:47	U	SMPL
CCV08 - 1	CCV08	21292	5.1173	-	7470A	PPB	11 Aug 2022 09:22:02	U	SMPL
CCB08 - 1	CCB08	-22	-0.0694	-	7470A	PPB	11 Aug 2022 09:24:18	U	SMPL