

LB123054

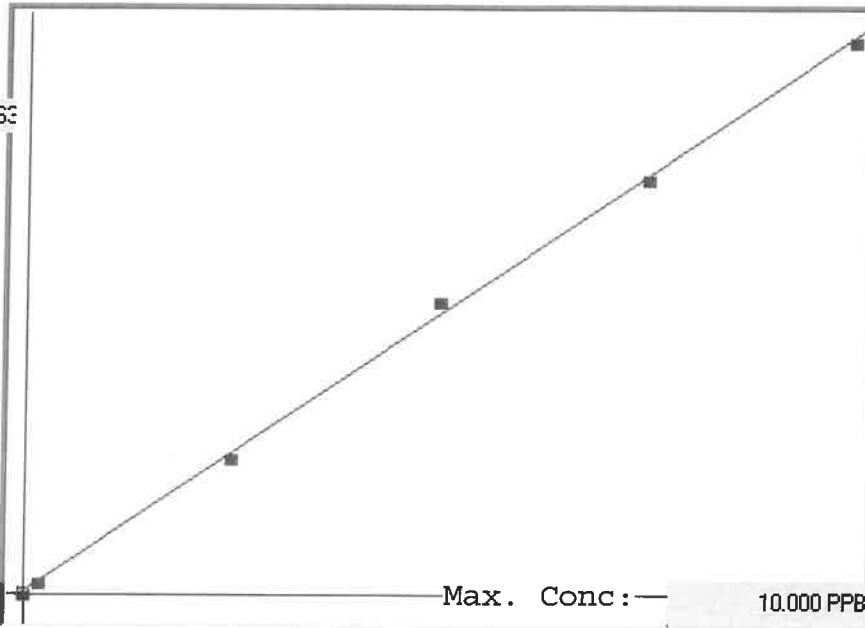
SFAM01.1

INSTRUMENT ID: (V4)

Linear

μ Abs.:

42763



A= 0.0000e+000

B= 2.3307e-004 slope

C= -5.0991e-002 y-intercept

Rho= 0.9994964

Accept=Accepted

Std ID	Conc.	Calc.	Dev.	Mean	SD or %RSD	Rep 1	Rep 2	Rep 3	Rep 4	Rep 5	%SD
0.00	0.000	-0.022	-0.022	124	0.000	124					=
0.05	0.050					185	0				-14
0.20	0.200	0.172	-0.028	955	0.0 %	955					-3
2.50	2.500	2.421	-0.079	10605	0.0 %	10605					5
5.00	5.000	5.257	0.257	22772	0.0 %	22772					-1
7.50	7.500	7.457	-0.043	32215	0.0 %	32215					-1
10.0	10.000	9.916	-0.084	42763	0.0 %	42763					-1

INSTRUMENT ID : CV1

Sample ID	Extended ID	μ Abs.	Conc.	Std Conc	Method	Units	Date	Type
	0 S0	124	-		0 SFAM01.1	PPB	11/29/2022 14:15	Std
	0.2 S01	955	-		0.2 SFAM01.1	PPB	11/29/2022 14:17	Std
	2.5 S02	10605	-		2.5 SFAM01.1	PPB	11/29/2022 14:19	Std
	5 S03	22772	-		5 SFAM01.1	PPB	11/29/2022 14:21	Std
	7.5 S04	32215	-		7.5 SFAM01.1	PPB	11/29/2022 14:24	Std
	10 S05	42763	-		10 SFAM01.1	PPB	11/29/2022 14:29	Std
ICV038	ICV038	17753	4.0867	-	SFAM01.1	PPB	11/29/2022 14:31	SMPL
ICB038	ICB038	349	0.0304	-	SFAM01.1	PPB	11/29/2022 14:34	SMPL
CCV096	CCV096	22872	5.2798	-	SFAM01.1	PPB	11/29/2022 14:36	SMPL
CCB096	CCB096	162	-0.0132	-	SFAM01.1	PPB	11/29/2022 14:38	SMPL
PB149327BL	PBW327	284	0.0152	-	SFAM01.1	PPB	11/29/2022 14:40	SMPL
N5629-01	YBJZ9	8582	1.9492	-	SFAM01.1	PPB	11/29/2022 14:43	SMPL
N5629-02	YBK01	335546	HIGH	-	SFAM01.1	PPB	11/29/2022 14:45	
N5629-03	YBK05	229633	53.4699	-	SFAM01.1	PPB	11/29/2022 14:47	SMPL
N5629-04	YBK05D	230188	53.5993	-	SFAM01.1	PPB	11/29/2022 14:49	SMPL
N5629-05	YBK05S	235385	54.8105	-	SFAM01.1	PPB	11/29/2022 14:51	SMPL
N5629-06	YBK07	203895	47.4711	-	SFAM01.1	PPB	11/29/2022 14:54	SMPL
PB149328BL	PBW328	357	0.0322	-	SFAM01.1	PPB	11/29/2022 14:56	SMPL
N5630-01	YBK00	2750	0.59	-	SFAM01.1	PPB	11/29/2022 14:58	SMPL
N5630-02	YBK02	2199	0.4615	-	SFAM01.1	PPB	11/29/2022 15:00	SMPL
N5630-03	YBK06	33825	7.8327	-	SFAM01.1	PPB	11/29/2022 15:03	SMPL
N5630-04	YBK06D	34295	7.9422	-	SFAM01.1	PPB	11/29/2022 15:05	SMPL
N5630-05	YBK06S	38501	8.9225	-	SFAM01.1	PPB	11/29/2022 15:07	SMPL
N5630-06	YBK08	755	0.125	-	SFAM01.1	PPB	11/29/2022 15:10	SMPL
N5630-07	YBK55	358	0.0324	-	SFAM01.1	PPB	11/29/2022 15:12	SMPL
PB149329BL	PBW329	0	-0.051	-	SFAM01.1	PPB	11/29/2022 15:14	SMPL
N5654-12	COAC0	352	0.031	-	SFAM01.1	PPB	11/29/2022 15:16	SMPL
N5654-13	COAC1	364	0.0338	-	SFAM01.1	PPB	11/29/2022 15:19	SMPL
N5654-14	COAC2	374	0.0362	-	SFAM01.1	PPB	11/29/2022 15:21	SMPL
PB149330BL	PBW330	53	-0.0386	-	SFAM01.1	PPB	11/29/2022 15:23	SMPL
N5717-01	MA0B23	485	0.062	-	SFAM01.1	PPB	11/29/2022 15:25	SMPL
N5717-02	MA0B23D	495	0.0644	-	SFAM01.1	PPB	11/29/2022 15:28	SMPL
CCV097	CCV097	22743	5.2498	-	SFAM01.1	PPB	11/29/2022 15:30	SMPL
CCB097	CCB097	235	0.0038	-	SFAM01.1	PPB	11/29/2022 15:32	SMPL
N5717-03	MA0B23S	4887	1.088	-	SFAM01.1	PPB	11/29/2022 15:35	SMPL
N5717-04	MA0B24	558	0.0791	-	SFAM01.1	PPB	11/29/2022 15:37	SMPL
N5717-06	MA0B29	14426	3.3113	-	SFAM01.1	PPB	11/29/2022 15:39	SMPL
N5629-02DLX10	YBK01	45593	10.5754	-	SFAM01.1	PPB	11/29/2022 15:46	SMPL
N5629-03DLX10	YBK05	24609	5.6847	-	SFAM01.1	PPB	11/29/2022 15:48	SMPL
N5629-04DLX10	YBK05D	24673	5.6996	-	SFAM01.1	PPB	11/29/2022 15:50	SMPL
N5629-05DLX10	YBK05S	25302	5.8462	-	SFAM01.1	PPB	11/29/2022 15:53	SMPL
N5629-06DLX10	YBK07	22075	5.0941	-	SFAM01.1	PPB	11/29/2022 15:55	SMPL
N5629-02DLX25	YBK01	19809	4.5659	-	SFAM01.1	PPB	11/29/2022 15:57	SMPL
CCV098	CCV098	22997	5.309	-	SFAM01.1	PPB	11/29/2022 15:59	SMPL
CCB098	CCB098	130	-0.0207	-	SFAM01.1	PPB	11/29/2022 16:02	SMPL