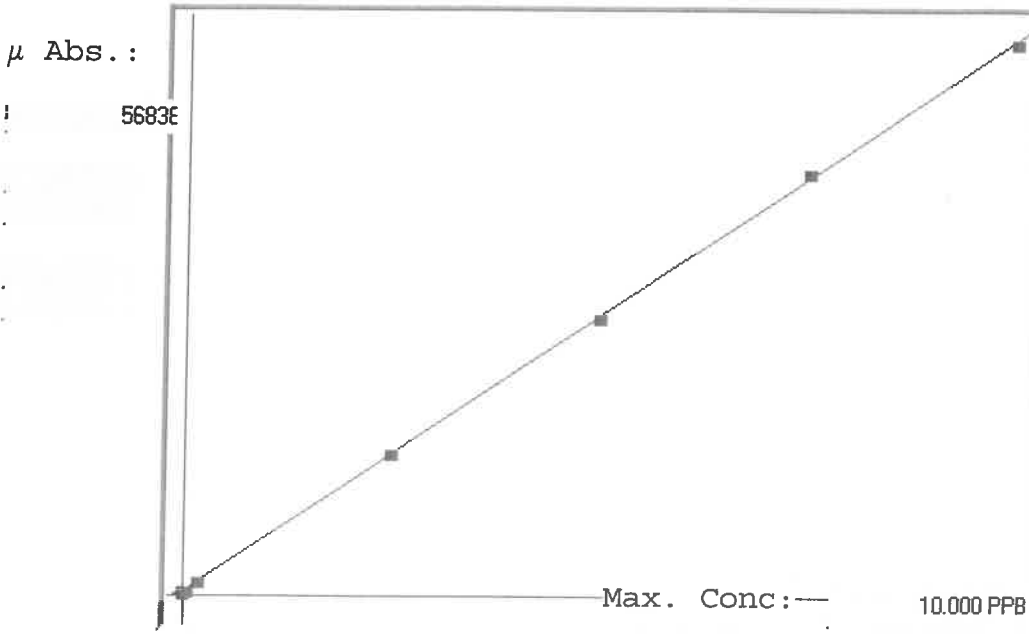


LB127501

SFAM01.1

INSTRUMENT ID: LV4

Linear



A= 0.0000e+000
 B= 1.7585e-004 slope
 C= -5.8579e-002 y-intercept
 Rho= 0.9999262
 Accept=Accepted

Std ID	Conc.	Calc.	Dev.	Mean	SD or %RSD	Rep 1	Rep 2	Rep 3	Rep 4	Rep 5	7.00
0.00	0.000	-0.020	-0.020	222	0.000	222					
0.05	0.050	0.041	-0.009	567	0.0 %	567	0				-18
0.20	0.200	0.196	-0.004	1450	0.0 %	1450					-2
2.50	2.500	2.532	0.032	14730	0.0 %	14730					-1
5.00	5.000	4.974	-0.026	28620	0.0 %	28620					-1
7.50	7.500	7.590	0.090	43493	0.0 %	43493					-1
10.0	10.000	9.936	-0.064	56838	0.0 %	56838					-1

LB127501

INSTRUMENT ID : CV1

Sample ID	Extended ID	μ Abs.	Conc.	Std Conc	Method	Units	Date	Type
	0 S0	222	-		0 SFAM01.1	PPB	9/27/2023 15:57	Std
	0.05 S01	567	-		0.05 SFAM01.1	PPB	9/27/2023 16:02	Std
	0.2 S02	1450	-		0.2 SFAM01.1	PPB	9/27/2023 16:04	Std
	2.5 S03	14730	-		2.5 SFAM01.1	PPB	9/27/2023 16:06	Std
	5 S04	28620	-		5 SFAM01.1	PPB	9/27/2023 16:09	Std
	7.5 S05	43493	-		7.5 SFAM01.1	PPB	9/27/2023 16:11	Std
	10 S06	56838	-		10 SFAM01.1	PPB	9/27/2023 16:13	Std
ICV083	ICV083	23217	4.0241	-	SFAM01.1	PPB	9/27/2023 16:16	SMPL
ICB083	ICB083	198	-0.0238	-	SFAM01.1	PPB	9/27/2023 16:19	SMPL
CCV068	CCV068	28622	4.9746	-	SFAM01.1	PPB	9/27/2023 16:21	SMPL
CCB068	CCB068	222	-0.0195	-	SFAM01.1	PPB	9/27/2023 16:23	SMPL
PB155853BL	PBS853	242	-0.016	-	SFAM01.1	PPB	9/27/2023 16:25	SMPL
O4442-01	MJKTY6	1317	0.173	-	SFAM01.1	PPB	9/27/2023 16:28	SMPL
O4442-02	MJKTY7	1938	0.2822	-	SFAM01.1	PPB	9/27/2023 16:30	SMPL
O4442-03	MJKTY8	8762	1.4822	-	SFAM01.1	PPB	9/27/2023 16:32	SMPL
O4442-04	MJKTY9	5707	0.945	-	SFAM01.1	PPB	9/27/2023 16:34	SMPL
O4442-05	MJKTZ0	5004	0.8214	-	SFAM01.1	PPB	9/27/2023 16:37	SMPL
O4442-06	MJKTZ1	4812	0.7876	-	SFAM01.1	PPB	9/27/2023 16:39	SMPL
O4442-07	MJKTZ2	7885	1.328	-	SFAM01.1	PPB	9/27/2023 16:41	SMPL
O4442-08	MJKTZ3	7659	1.2883	-	SFAM01.1	PPB	9/27/2023 16:43	SMPL
O4442-09	MJKTZ4	59753	10.449	-	SFAM01.1	PPB	9/27/2023 16:46	SMPL
O4442-10	MJKTZ5	7477	1.2563	-	SFAM01.1	PPB	9/27/2023 16:48	SMPL
O4442-11	MJKTZ6	966	0.1113	-	SFAM01.1	PPB	9/27/2023 16:50	SMPL
O4442-12	MJKTZ7	3593	0.5733	-	SFAM01.1	PPB	9/27/2023 16:52	SMPL
O4442-13	MJKTZ8	4925	0.8075	-	SFAM01.1	PPB	9/27/2023 16:55	SMPL
O4442-14	MJKTZ9	2972	0.464	-	SFAM01.1	PPB	9/27/2023 16:57	SMPL
O4442-15	MJKW00	660	0.0575	-	SFAM01.1	PPB	9/27/2023 16:59	SMPL
O4442-16	MJKW11	801	0.0823	-	SFAM01.1	PPB	9/27/2023 17:02	SMPL
O4442-17	MJKW12	770	0.0768	-	SFAM01.1	PPB	9/27/2023 17:04	SMPL
O4442-18	MJKW13	713	0.0668	-	SFAM01.1	PPB	9/27/2023 17:06	SMPL
O4442-19	MJKW14	854	0.0916	-	SFAM01.1	PPB	9/27/2023 17:08	SMPL
CCV069	CCV069	27637	4.8014	-	SFAM01.1	PPB	9/27/2023 17:11	SMPL
CCB069	CCB069	240	-0.0164	-	SFAM01.1	PPB	9/27/2023 17:13	SMPL
O4442-20	MJKW14D	917	0.1027	-	SFAM01.1	PPB	9/27/2023 17:15	SMPL
O4442-21	MJKW14S	13789	2.3662	-	SFAM01.1	PPB	9/27/2023 17:17	SMPL
O4442-22	MJKW15	821	0.0858	-	SFAM01.1	PPB	9/27/2023 17:20	SMPL
PB155895BL	PBS895	236	-0.0171	-	SFAM01.1	PPB	9/27/2023 17:22	SMPL
O4443-01	MJKTX1	80347	14.0705	-	SFAM01.1	PPB	9/27/2023 17:24	SMPL
O4443-02	MJKTX2	22207	3.8465	-	SFAM01.1	PPB	9/27/2023 17:26	SMPL
O4443-03	MJKTX3	875	0.0953	-	SFAM01.1	PPB	9/27/2023 17:29	SMPL
O4443-04	MJKTX4	940	0.1067	-	SFAM01.1	PPB	9/27/2023 17:31	SMPL
O4443-05	MJKTX5	1008	0.1187	-	SFAM01.1	PPB	9/27/2023 17:33	SMPL
O4443-06	MJKTX6	2582	0.3955	-	SFAM01.1	PPB	9/27/2023 17:35	SMPL
O4443-07	MJKTX8	668	0.0589	-	SFAM01.1	PPB	9/27/2023 17:38	SMPL
O4443-08	MJKTX9	4136	0.6687	-	SFAM01.1	PPB	9/27/2023 17:40	SMPL
O4443-09	MJKTY0	7768	1.3074	-	SFAM01.1	PPB	9/27/2023 17:42	SMPL

LB127501
INSTRUMENT ID : CV1

O4443-10	MJKTY1	7188	1.2054 -	SFAM01.1	PPB	9/27/2023 17:45	SMPL
O4443-11	MJKTY2	6603	1.1026 -	SFAM01.1	PPB	9/27/2023 17:47	SMPL
O4443-12	MJKTY3	6362	1.0602 -	SFAM01.1	PPB	9/27/2023 17:49	SMPL
O4443-13	MJKTY4	4427	0.7199 -	SFAM01.1	PPB	9/27/2023 17:51	SMPL
O4443-14	MJKTY5	5229	0.8609 -	SFAM01.1	PPB	9/27/2023 17:54	SMPL
O4443-16	MJKTY5D	4731	0.7734 -	SFAM01.1	PPB	9/27/2023 17:56	SMPL
O4443-17	MJKTY5S	20730	3.5868 -	SFAM01.1	PPB	9/27/2023 17:58	SMPL
CCV070	CCV070	27802	4.8304 -	SFAM01.1	PPB	9/27/2023 18:00	SMPL
CCB070	CCB070	191	-0.025 -	SFAM01.1	PPB	9/27/2023 18:03	SMPL
PB155896BL	PBS896	285	-0.0085 -	SFAM01.1	PPB	9/27/2023 18:08	SMPL
O4444-01	MJKW01	2813	0.4361 -	SFAM01.1	PPB	9/27/2023 18:10	SMPL
O4444-02	MJKW02	546	0.0374 -	SFAM01.1	PPB	9/27/2023 18:12	SMPL
O4444-03	MJKW03	716	0.0673 -	SFAM01.1	PPB	9/27/2023 18:14	SMPL
O4444-04	MJKW04	677	0.0605 -	SFAM01.1	PPB	9/27/2023 18:17	SMPL
O4444-05	MJKW05	468	0.0237 -	SFAM01.1	PPB	9/27/2023 18:19	SMPL
O4444-06	MJKW06	6569	1.0966 -	SFAM01.1	PPB	9/27/2023 18:21	SMPL
O4444-07	MJKW07	1828	0.2629 -	SFAM01.1	PPB	9/27/2023 18:23	SMPL
O4444-08	MJKW08	3409	0.5409 -	SFAM01.1	PPB	9/27/2023 18:26	SMPL
O4444-09	MJKW09	1856	0.2678 -	SFAM01.1	PPB	9/27/2023 18:28	SMPL
O4444-10	MJKW10	659	0.0573 -	SFAM01.1	PPB	9/27/2023 18:30	SMPL
O4444-11	NJKW16	740	0.0716 -	SFAM01.1	PPB	9/27/2023 18:33	SMPL
O4444-12	NJKW17	1524	0.2094 -	SFAM01.1	PPB	9/27/2023 18:35	SMPL
O4444-13	NJKW18	839	0.089 -	SFAM01.1	PPB	9/27/2023 18:37	SMPL
O4444-14	NJKW19	553	0.0387 -	SFAM01.1	PPB	9/27/2023 18:39	SMPL
O4444-15	NJKW20	611	0.0489 -	SFAM01.1	PPB	9/27/2023 18:42	SMPL
O4444-16	NJKW21	660	0.0575 -	SFAM01.1	PPB	9/27/2023 18:44	SMPL
O4444-17	NJKW22	939	0.1065 -	SFAM01.1	PPB	9/27/2023 18:46	SMPL
O4444-18	NJKW23	1807	0.2592 -	SFAM01.1	PPB	9/27/2023 18:48	SMPL
O4444-19	NJKW24	626	0.0515 -	SFAM01.1	PPB	9/27/2023 18:51	SMPL
CCV071	CCV071	27609	4.7965 -	SFAM01.1	PPB	9/27/2023 18:53	SMPL
CCB071	CCB071	247	-0.0151 -	SFAM01.1	PPB	9/27/2023 18:55	SMPL
O4444-20	NJKW24D	683	0.0615 -	SFAM01.1	PPB	9/27/2023 18:57	SMPL
O4444-21	NJKW24S	14175	2.4341 -	SFAM01.1	PPB	9/27/2023 19:00	SMPL
O4442-09DLX2	MJKTZ4	29999	5.2167 -	SFAM01.1	PPB	9/27/2023 19:02	SMPL
O4443-01DLX5	MJKTX1	15430	2.6548 -	SFAM01.1	PPB	9/27/2023 19:04	SMPL
CCV072	CCV072	27532	4.7829 -	SFAM01.1	PPB	9/27/2023 19:07	SMPL
CCB072	CCB072	231	-0.018 -	SFAM01.1	PPB	9/27/2023 19:09	SMPL