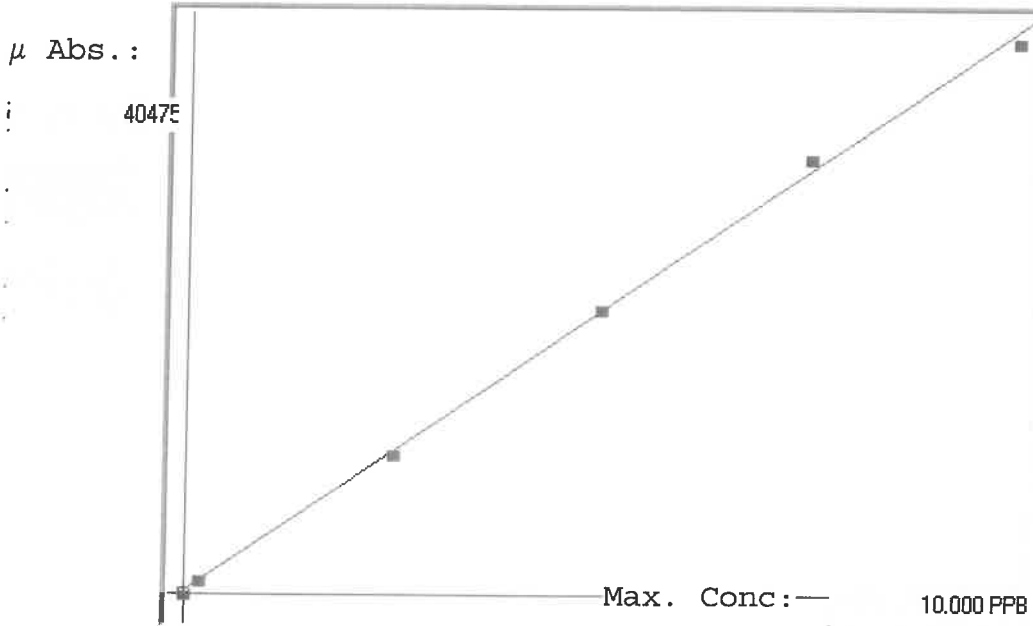


L3191411

SFAM01.1

INSTRUMENT ID: CV1

Linear



A= 0.0000e+000
 B= 2.4332e-004 *slope*
 C= -5.2722e-002 *intercept*
 Rho= 0.9993295
 Accept=Accepted

Std ID	Conc.	Calc.	Dev.	Mean	SD or %RSD	Rep 1	Rep 2	Rep 3	Rep 4	Rep 5	<i>g/d)</i>
0.00	0.000	-0.033	-0.033	82	0.000	82					1
0.05	0.050					442	0				-2
0.20	0.200	0.202	0.002	1046	0.0 %	1046					-2
2.50	2.500	2.446	-0.054	10270	0.0 %	10270					1
5.00	5.000	5.040	0.040	20931	0.0 %	20931					3
7.50	7.500	7.749	0.249	32065	0.0 %	32065					3
10.0	10.000	9.796	-0.204	40475	0.0 %	40475					-2

LB131411
INSTRUMENT ID : CV1

Sample ID	Extended ID	μ Abs.	Conc.	Std Conc	Method	Units	Date	Type
	0 S0	82	-		0 SFAM01.1	PPB	6/26/2024 9:19	Std
	0.2 S01	1046	-		0.2 SFAM01.1	PPB	6/26/2024 9:21	Std
	2.5 S02	10270	-		2.5 SFAM01.1	PPB	6/26/2024 9:23	Std
	5 S03	20931	-		5 SFAM01.1	PPB	6/26/2024 9:25	Std
	7.5 S04	32065	-		7.5 SFAM01.1	PPB	6/26/2024 9:28	Std
	10 S05	40475	-		10 SFAM01.1	PPB	6/26/2024 9:30	Std
ICV005	ICV005	16841	4.045 -		SFAM01.1	PPB	6/26/2024 9:33	SMPL
ICB005	ICB005	80	-0.0333 -		SFAM01.1	PPB	6/26/2024 9:38	SMPL
CCV090	CCV090	21212	5.1085 -		SFAM01.1	PPB	6/26/2024 9:40	SMPL
CCB090	CCB090	134	-0.0201 -		SFAM01.1	PPB	6/26/2024 9:46	SMPL
PB161722BL	PBW722	18	-0.0483 -		SFAM01.1	PPB	6/26/2024 9:48	SMPL
P3057-01	E08C7	44	-0.042 -		SFAM01.1	PPB	6/26/2024 9:50	SMPL
P3057-02	E08C7D	51	-0.0403 -		SFAM01.1	PPB	6/26/2024 9:52	SMPL
P3057-03	E08C7S	4099	0.9446 -		SFAM01.1	PPB	6/26/2024 9:55	SMPL
P3057-04	E08C9	-54	-0.0659 -		SFAM01.1	PPB	6/26/2024 9:57	SMPL
P3057-05	E08D4	2	-0.0522 -		SFAM01.1	PPB	6/26/2024 9:59	SMPL
P3057-06	E08D7	43	-0.0423 -		SFAM01.1	PPB	6/26/2024 10:01	SMPL
P3058-01	E08C8	34	-0.0444 -		SFAM01.1	PPB	6/26/2024 10:04	SMPL
P3058-02	E08C8D	64	-0.0371 -		SFAM01.1	PPB	6/26/2024 10:06	SMPL
P3058-03	E08C8S	4708	1.0928 -		SFAM01.1	PPB	6/26/2024 10:08	SMPL
P3058-04	E08D0	-31	-0.0603 -		SFAM01.1	PPB	6/26/2024 10:10	SMPL
P3058-05	E08D5	15	-0.0491 -		SFAM01.1	PPB	6/26/2024 10:13	SMPL
P3058-06	E08D8	59	-0.0384 -		SFAM01.1	PPB	6/26/2024 10:15	SMPL
CCV091	CCV091	20995	5.0557 -		SFAM01.1	PPB	6/26/2024 10:17	SMPL
CCB091	CCB091	151	-0.016 -		SFAM01.1	PPB	6/26/2024 10:22	SMPL