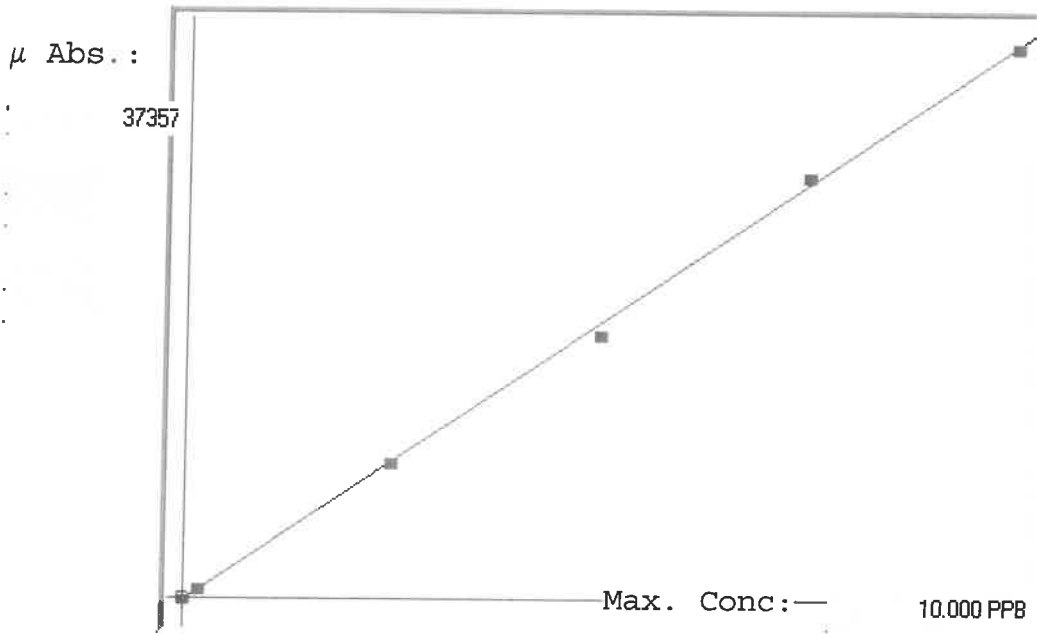


LB132053

SFAM01.1

INSTRUMENT ID: CX2

Linear



A= 0.0000e+000
 B= 2.6602e-004 *slope*
 C= 4.4951e-002 *t=1.01 except*
 Rho= 0.9995579
 Accept=Accepted

Std ID	Conc.	Calc.	Dev.	Mean	SD or %RSD	Rep 1	Rep 2	Rep 3	Rep 4	Rep 5	<i>d.u.)</i>
0.00	0.000	0.053	0.053	31	0.000	31					=
0.05	0.050					442	0				16
0.20	0.200	0.229	0.029	692	0.0 %	692					0
2.50	2.500	2.488	-0.012	9184	0.0 %	9184					-4
5.00	5.000	4.791	-0.209	17841	0.0 %	17841					2
7.50	7.500	7.656	0.156	28612	0.0 %	28612					0
10.0	10.000	9.983	-0.017	37357	0.0 %	37357					0

LB132053

INSTRUMENT ID : CV1

Sample ID	Extended ID	μ Abs.	Conc.	Std Conc	Method	Units	Date	Type
	0 S0	31	-		0 SFAM01.1	PPB	8/16/2024 16:10	Std
	0.2 S01	692	-		0.2 SFAM01.1	PPB	8/16/2024 16:15	Std
	2.5 S02	9184	-		2.5 SFAM01.1	PPB	8/16/2024 16:17	Std
	5 S03	17841	-		5 SFAM01.1	PPB	8/16/2024 16:20	Std
	7.5 S04	28612	-		7.5 SFAM01.1	PPB	8/16/2024 16:22	Std
	10 S05	37357	-		10 SFAM01.1	PPB	8/16/2024 16:24	Std
ICV080	ICV080	15232	4.0969 -		SFAM01.1	PPB	8/16/2024 16:27	SMPL
ICB080	ICB080	-105	0.017 -		SFAM01.1	PPB	8/16/2024 16:29	SMPL
CCV607	CCV067	18686	5.0157 -		SFAM01.1	PPB	8/16/2024 16:32	SMPL
CCB067	CCB067	-135	0.009 -		SFAM01.1	PPB	8/16/2024 16:34	SMPL
PB162805BL	PBS805	5	0.0463 -		SFAM01.1	PPB	8/16/2024 16:36	SMPL
P3625-01	E1ZX8	1727	0.5044 -		SFAM01.1	PPB	8/16/2024 16:38	SMPL
P3625-02	E1ZX9	1854	0.5381 -		SFAM01.1	PPB	8/16/2024 16:41	SMPL
P3625-03	E1ZX9D	1582	0.4658 -		SFAM01.1	PPB	8/16/2024 16:43	SMPL
P3625-04	E1ZX9S	10842	2.9291 -		SFAM01.1	PPB	8/16/2024 16:45	SMPL
CCV068	CCV68	18157	4.875 -		SFAM01.1	PPB	8/16/2024 16:47	SMPL
CCB068	CCB068	-147	0.0058 -		SFAM01.1	PPB	8/16/2024 16:50	SMPL