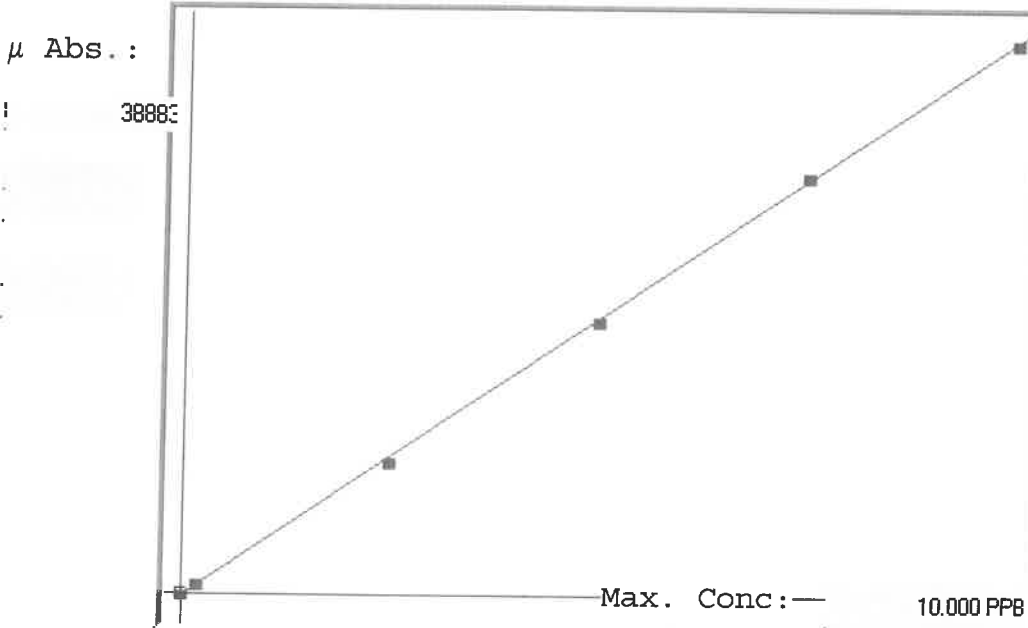


LB132313

SFAM01.1

INSTRUMENT ID: CV1

Linear



A= 0.0000e+000  
 B= 2.5561e-004 *slope*  
 C= 2.8882e-002 *y-intercept*  
 Rho= 0.9998722  
 Accept=Accepted

Std ID	Conc.	Calc.	Dev.	Mean	SD or %RSD	Rep 1	Rep 2	Rep 3	Rep 4	Rep 5	<i>o/d/n</i>
0.00	0.000	0.037	0.037	33	0.000	33					
0.05	0.050					442	0				
0.20	0.200	0.225	0.025	769	0.0 %	769					
2.50	2.500	2.416	-0.084	9337	0.0 %	9337					
5.00	5.000	4.959	-0.041	19287	0.0 %	19287					
7.50	7.500	7.595	0.095	29599	0.0 %	29599					
10.0	10.000	9.968	-0.032	38883	0.0 %	38883					

*o/d/n*  
 =  
 13  
 13  
 11  
 0

## LB132313

## INSTRUMENT ID : CV1

Sample ID	Extended ID	$\mu$ Abs.	Conc.	Std Conc	Method	Units	Date	Type
	0 S0	33	-		0 SFAM01.1	PPB	9/6/2024 14:28	Std
	0.2 S01	769	-		0.2 SFAM01.1	PPB	9/6/2024 14:30	Std
	2.5 S02	9337	-		2.5 SFAM01.1	PPB	9/6/2024 14:33	Std
	5 S03	19287	-		5 SFAM01.1	PPB	9/6/2024 14:35	Std
	7.5 S04	29599	-		7.5 SFAM01.1	PPB	9/6/2024 14:37	Std
	10 S05	38883	-		10 SFAM01.1	PPB	9/6/2024 14:40	Std
ICV012	ICV012	15537	4.0004	-	SFAM01.1	PPB	9/6/2024 14:42	SMPL
ICB012	ICB012	-178	-0.0166	-	SFAM01.1	PPB	9/6/2024 14:45	SMPL
CCV042	CCV042	19866	5.1069	-	SFAM01.1	PPB	9/6/2024 14:47	SMPL
CCB042	CCB042	-213	-0.0256	-	SFAM01.1	PPB	9/6/2024 14:49	SMPL
PB163199BL	PBS199	17	0.0332	-	SFAM01.1	PPB	9/6/2024 14:52	SMPL
P3677-02	MX121	317084	HIGH	-	SFAM01.1	PPB	9/6/2024 14:54	
P3690-01	MDCVF3	2933	0.7786	-	SFAM01.1	PPB	9/6/2024 14:56	SMPL
P3690-02	MDCVF4	1171	0.3282	-	SFAM01.1	PPB	9/6/2024 14:58	SMPL
P3690-03	MDCVF5	691	0.2055	-	SFAM01.1	PPB	9/6/2024 15:00	SMPL
P3690-04	MDCVO6	779	0.228	-	SFAM01.1	PPB	9/6/2024 15:03	SMPL
P3690-05	MDCVO6D	725	0.2142	-	SFAM01.1	PPB	9/6/2024 15:05	SMPL
P3690-07	MDCVO7	976	0.2784	-	SFAM01.1	PPB	9/6/2024 15:10	SMPL
P3690-08	MDCVO8	113	0.0578	-	SFAM01.1	PPB	9/6/2024 15:12	SMPL
P3690-09	MDCVO9	712	0.2109	-	SFAM01.1	PPB	9/6/2024 15:14	SMPL
P3690-10	MDCVP0	701	0.2081	-	SFAM01.1	PPB	9/6/2024 15:16	SMPL
P3690-11	MDCVP1	553	0.1702	-	SFAM01.1	PPB	9/6/2024 15:19	SMPL
P3690-12	MDCVP2	194	0.0785	-	SFAM01.1	PPB	9/6/2024 15:21	SMPL
P3690-13	MDCVP3	498	0.1562	-	SFAM01.1	PPB	9/6/2024 15:23	SMPL
PB163201BL	PBS201	-14	0.0253	-	SFAM01.1	PPB	9/6/2024 15:25	SMPL
P3863-01	E1KH1	1394	0.3852	-	SFAM01.1	PPB	9/6/2024 15:28	SMPL
P3863-02	E1KH3	437	0.1406	-	SFAM01.1	PPB	9/6/2024 15:30	SMPL
P3863-03	E1KH7	165	0.0711	-	SFAM01.1	PPB	9/6/2024 15:32	SMPL
P3863-04	E1KH9	204	0.081	-	SFAM01.1	PPB	9/6/2024 15:34	SMPL
CCV043	CCV043	20661	5.3101	-	SFAM01.1	PPB	9/6/2024 15:37	SMPL
CCB043	CCB043	-135	-0.0056	-	SFAM01.1	PPB	9/6/2024 15:39	SMPL
P3863-05	E1KJ1	308	0.1076	-	SFAM01.1	PPB	9/6/2024 15:41	SMPL
P3863-06	E1KJ3	300	0.1056	-	SFAM01.1	PPB	9/6/2024 15:43	SMPL
P3863-07	E1KJ3D	214	0.0836	-	SFAM01.1	PPB	9/6/2024 15:46	SMPL
P3863-08	E1KJ3S	10309	2.664	-	SFAM01.1	PPB	9/6/2024 15:51	SMPL
P3690-06	MDCVO6S	9303	2.4069	-	SFAM01.1	PPB	9/6/2024 16:02	SMPL
P3677-02DLX25	MX121	24700	6.3426	-	SFAM01.1	PPB	9/6/2024 16:04	SMPL
CCV044	CCV044	18630	4.791	-	SFAM01.1	PPB	9/6/2024 16:13	SMPL
CCB044	CCB044	-174	-0.0156	-	SFAM01.1	PPB	9/6/2024 16:16	SMPL